



Clean Energy Implementation Plan for 2026-2029

DRAFT Review

September 23, 2025

Agenda

1 CETA

- CETA Standards
- CEIP Requirements

2 % Clean

- Resource Plan
- Clean Energy Forecast

3 Actions

- Specific Actions
- Alternative Compliance

4 EHD Map

- Named Communities
- EHD Map Data

5 Equity

- Actions & Metrics
- Energy Assistance

6 Public Input

- Public Process
- Public Input Options

1. CETA

What are the **CETA standards**
and the **CEIP requirements**?

Clean Energy Transformation Act (CETA)

- **CETA Enacted in 2019**

- Revised Code of Washington (RCW) [19.405](#)
- Washington Administrative Code (WAC) [194.40](#)

- **CETA Standards**

1. **No coal by December 31, 2025**

2. **Greenhouse Gas (GHG) Neutral**

- Must be at least [80% clean by 2030](#)
- Up to 20% alternative compliance

3. **100% Clean Electricity**

- Must be [100% clean by 2045](#)

- **“Clean” = Using renewable or nonemitting resources**

RCW: [19.405.030](#)



2025
NO COAL
STANDARD

[19.405.040](#)



2030
GHG NEUTRAL
STANDARD

[19.405.050](#)



2045
100% CLEAN
STANDARD

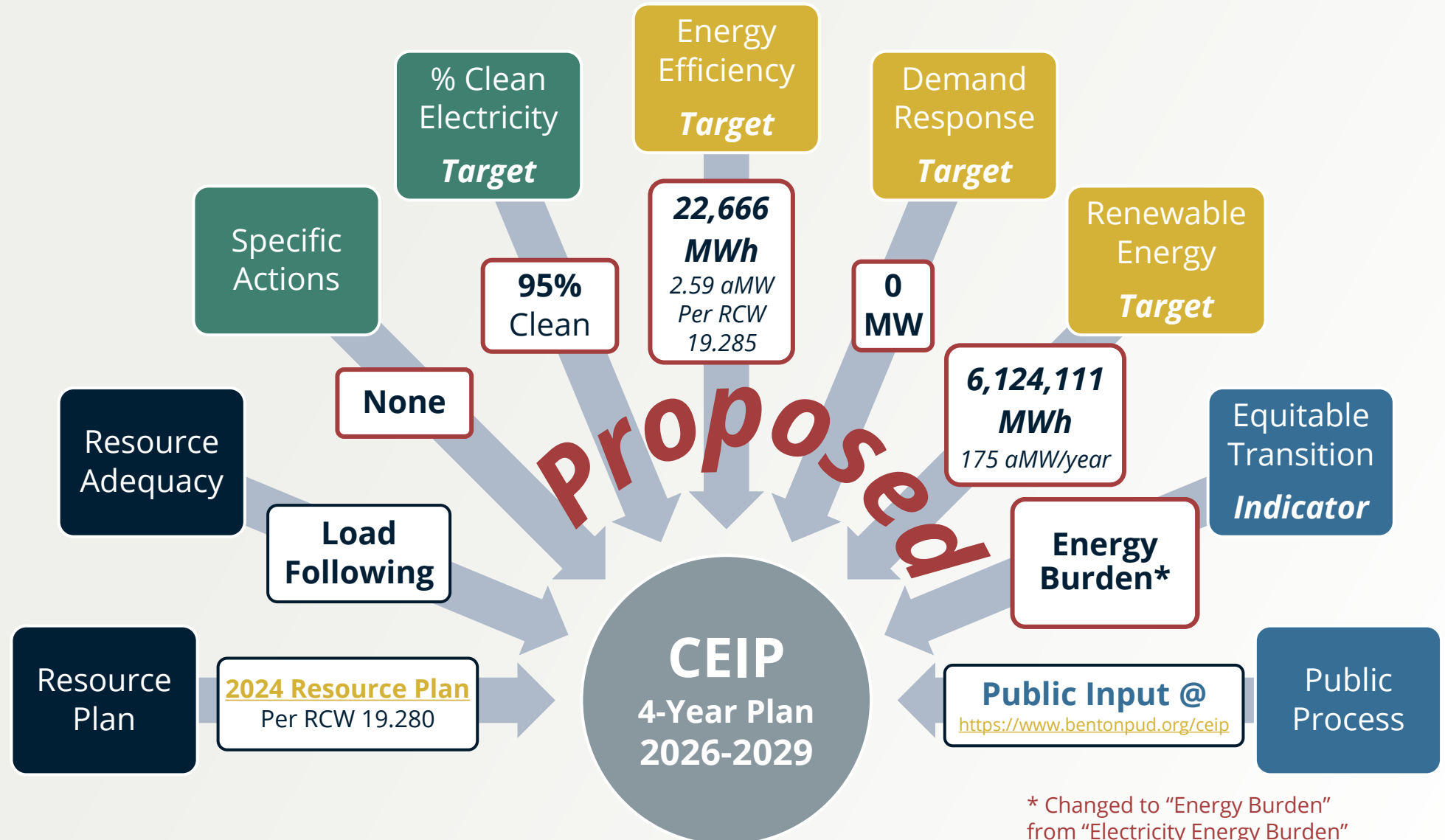
Clean Energy Implementation Plan (CEIP)

Each utility must submit by January 1, 2022, and **every four years** thereafter, a **CEIP** for **resources to be acquired** and **other actions** to be undertaken during the next 4-year period to comply with the **CETA Standards**.

Previous:

2022-2025 CEIP

Approved by Resolution No. 2585 on 11/9/2021



* Changed to "Energy Burden" from "Electricity Energy Burden"

2. % Clean

What is Benton PUD's **Resource Plan**
and **Clean Energy Forecast**?

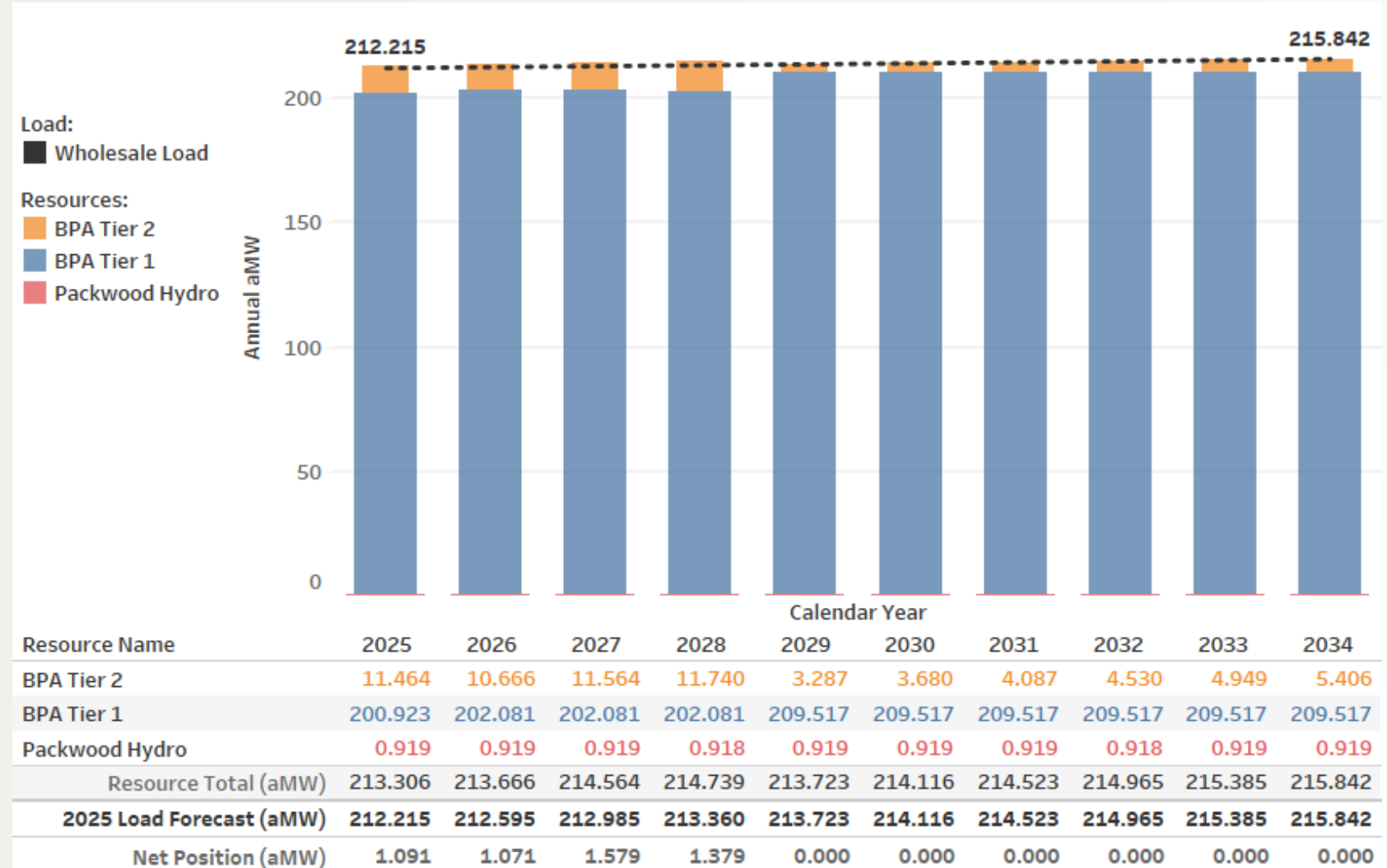
Resource Plan

- **Resource Plan**

- **CEIP** must be consistent with the most recent **Resource Plan**
 - **2024 Resource Plan**
Approved by Resolution No. 2681 on 8/27/2024
 - **Resource planning** RCW 19.280.030(5)(d) requires a **10-year plan** to meet the **CETA Standards**

- **Resource Adequacy**

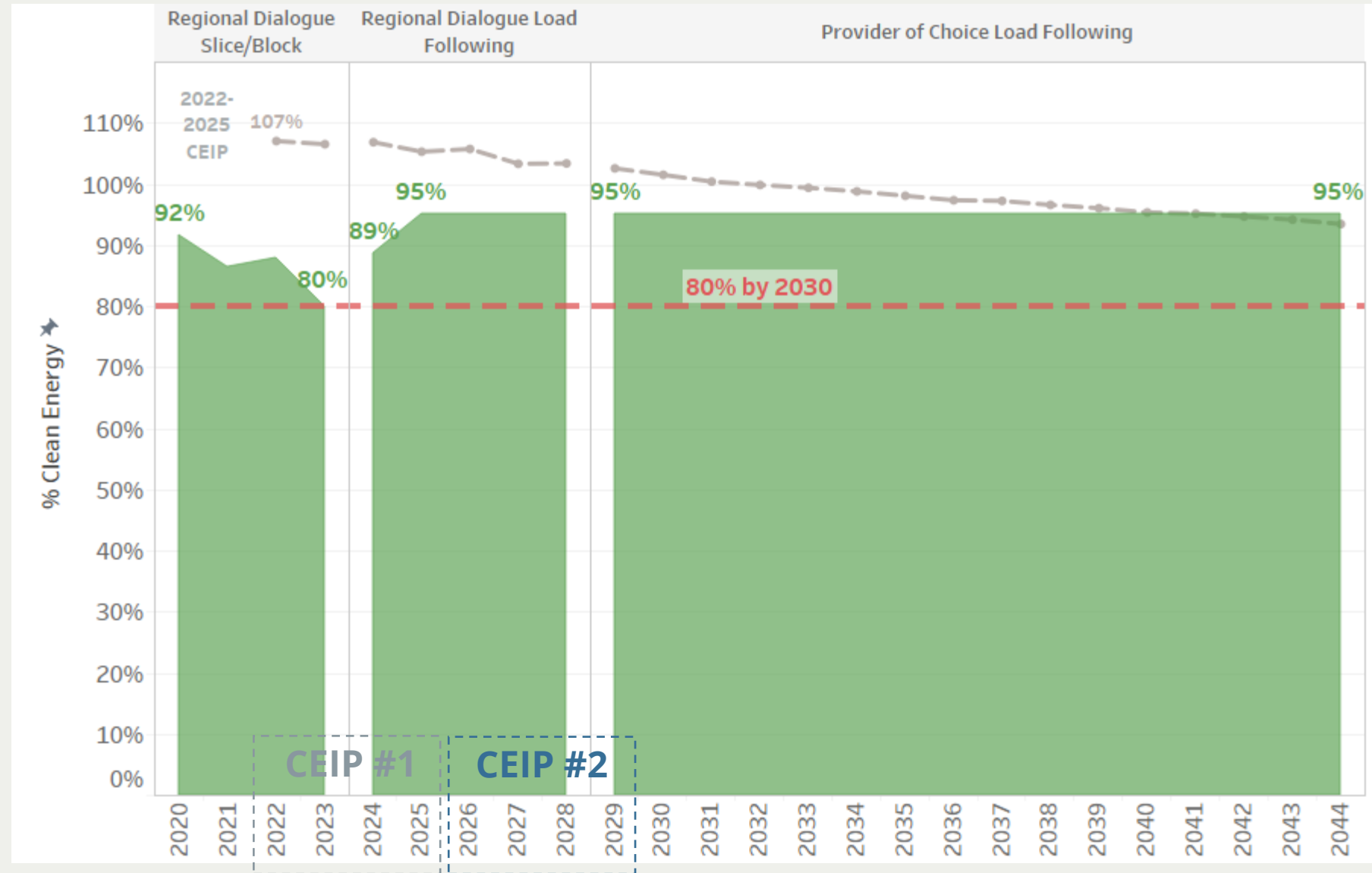
- **CEIP** must identify the **resource adequacy standard** relied on,
 - Resource adequacy is **provided by BPA** under load following contract
 - **Change** from last CEIP under Slice/Block contract



Note: BPA Tier 1 & 2 values are estimated for 2029 and beyond. The final Provider of Choice calculations will not be published until May 2026.

% Clean Electricity Use

- **2022-2025 CEIP**
% clean forecast
 - Above 100% due to forecast of *"Procurement"*
- **2020-2024 actual was 80%-92%**
 - Increased % **clean** due to load following
- **2026-2029 CEIP**
Proposed target is 95% clean



Clean Energy Forecast

Renewable
Energy Credit
(REC) Target

% Clean
Target: 95%

Renewable
Target:
6,124,111 MWh

BPUD
fuel mix MWh

Packwood
based on 5-
year average

BPA fuel mix
based on 13-
year average
(2012-2024)

	Calendar Year										
	2026	2027	2028	2029	2030	2031	2032	2033	2034	2035	2036
BPUD Retail MWh	1,805,809	1,809,127	1,817,278	1,815,392	1,818,732	1,822,186	1,830,945	1,829,512	1,833,390	1,837,390	1,845,909
BPUD Retail Prior 2-Year Avg. MWh	1,805,701	1,804,195	1,807,468	1,813,203	1,816,335	1,817,062	1,820,459	1,826,566	1,830,229	1,831,451	1,835,390
REC Target MWh	270,855	270,629	271,120	271,980	89,514	89,685	90,119	90,048	90,240	90,438	90,860
REC Target EIA %	15.000%	15.000%	15.000%	15.000%							
REC Target CETA %					4.922%	4.922%	4.922%	4.922%	4.922%	4.922%	4.922%
BPUD Retail Non-Clean %	4.922%	4.922%	4.922%	4.922%	4.922%	4.922%	4.922%	4.922%	4.922%	4.922%	4.922%
BPUD Retail Clean %	95.078%	95.078%	95.078%	95.078%	95.078%	95.078%	95.078%	95.078%	95.078%	95.078%	95.078%
BPUD Retail Renewable %	84.499%	84.499%	84.498%	84.498%	84.498%	84.498%	84.497%	84.498%	84.497%	84.497%	84.497%
BPUD Retail Non-emitting %	10.580%	10.580%	10.580%	10.580%	10.580%	10.580%	10.581%	10.581%	10.581%	10.581%	10.581%
BPUD Retail Non-Clean MWh	88,875	89,039	89,442	89,349	89,514	89,685	90,119	90,048	90,240	90,438	90,860
BPUD Retail Clean MWh	1,716,934	1,720,088	1,727,836	1,726,043	1,729,218	1,732,501	1,740,826	1,739,464	1,743,150	1,746,952	1,755,049
BPUD Retail Renewable MWh	1,525,885	1,528,686	1,535,566	1,533,974	1,536,793	1,539,709	1,547,102	1,545,892	1,549,165	1,552,542	1,559,732
BPUD Retail Non-emitting MWh	191,049	191,402	192,270	192,069	192,424	192,792	193,724	193,572	193,984	194,410	195,317
BPUD Retail Unspecified MWh	88,875	89,039	89,442	89,349	89,514	89,685	90,119	90,048	90,240	90,438	90,860
BPUD Retail Hydro MWh	1,514,349	1,517,128	1,523,955	1,522,376	1,525,173	1,528,067	1,535,403	1,534,203	1,537,451	1,540,802	1,547,938
BPUD Retail Wind MWh	11,537	11,558	11,610	11,598	11,620	11,642	11,698	11,689	11,714	11,740	11,795
BPUD Retail Nuclear MWh	191,049	191,402	192,270	192,069	192,424	192,792	193,724	193,572	193,984	194,410	195,317
BPUD Wholesale Total MWh	1,862,331	1,865,752	1,874,158	1,872,214	1,875,658	1,879,220	1,888,253	1,886,775	1,890,776	1,894,901	1,903,686
BPUD Wholesale BPA MWh	1,851,266	1,854,687	1,863,093	1,861,149	1,864,593	1,868,155	1,877,188	1,875,710	1,879,711	1,883,836	1,892,621
BPUD Wholesale Packwood MWh	11,065	11,065	11,065	11,065	11,065	11,065	11,065	11,065	11,065	11,065	11,065
BPUD Wholesale BPA %	99.406%	99.407%	99.410%	99.409%	99.410%	99.411%	99.414%	99.414%	99.415%	99.416%	99.419%
BPUD Wholesale Packwood %	0.594%	0.593%	0.590%	0.591%	0.590%	0.589%	0.586%	0.586%	0.585%	0.584%	0.581%
BPA Non-Clean %	4.951%	4.951%	4.951%	4.951%	4.951%	4.951%	4.951%	4.951%	4.951%	4.951%	4.951%
BPA Clean %	95.049%	95.049%	95.049%	95.049%	95.049%	95.049%	95.049%	95.049%	95.049%	95.049%	95.049%
BPA Unspecified %	4.951%	4.951%	4.951%	4.951%	4.951%	4.951%	4.951%	4.951%	4.951%	4.951%	4.951%
BPA Hydro %	83.763%	83.763%	83.763%	83.763%	83.763%	83.763%	83.763%	83.763%	83.763%	83.763%	83.763%
BPA Wind %	0.643%	0.643%	0.643%	0.643%	0.643%	0.643%	0.643%	0.643%	0.643%	0.643%	0.643%
BPA Nuclear %	10.643%	10.643%	10.643%	10.643%	10.643%	10.643%	10.643%	10.643%	10.643%	10.643%	10.643%

3. Actions

What **specific actions** is Benton PUD planning during the **next 4-year period** to comply with the **CETA Standards?**

GHG Neutral Standard

Primary + Alternative = 100%

• Primary Compliance

- ☒ • At least 80% clean by 2030

• Alternative Compliance

- From 2030-2044, may satisfy up to 20% with **alternative compliance**
- **CEIP** must identify planned use of these **alternatives**:

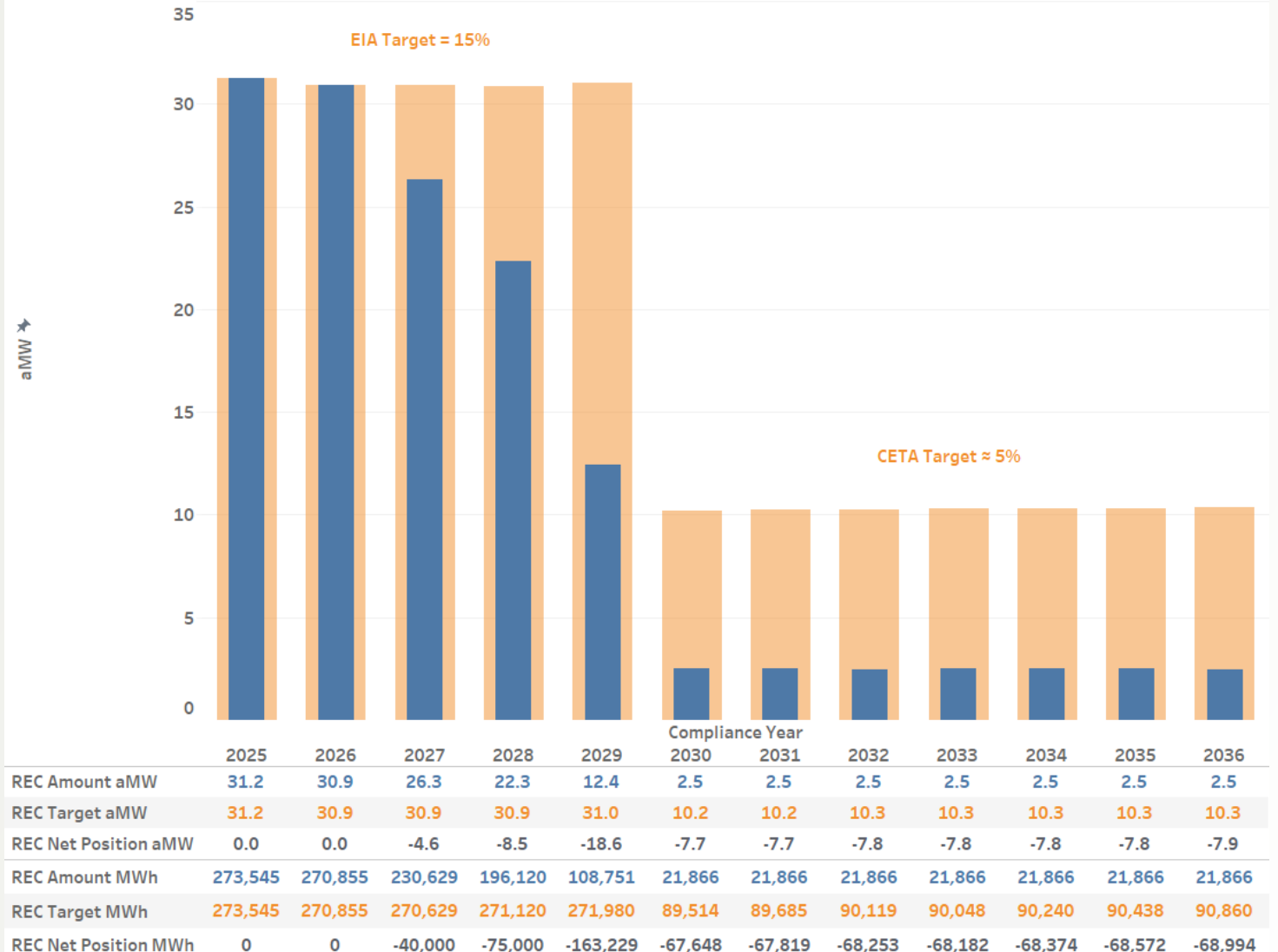
1. Pay the Penalty Amount
2. Energy Transformation Projects
3. Municipal Solid Waste

☒ 4. Renewable Energy Credits (REC)

- **Already** procuring for Energy Independence Act (EIA) compliance
- **CETA reduces EIA from 15% to 5%**

• **CEIP Actions? No incremental resource actions are planned**

Renewable Energy Credits - Compliance
Net Position by Compliance Year



4. EHD Map

How is Benton PUD identifying CETA's **Named Communities**?

CETA's Named Communities

Highly Impacted Community

Definition per RCW 19.405.020:

- means a community designated by the **department of health** based on cumulative impact analyses in **RCW 19.405.140**
- or a community located in census tracts that are fully or partially on "Indian country" as defined in 18 U.S.C. Sec. 1151.



Environmental Health Disparities (EHD) Map:

- Instructions for Utilities to Identify Highly Impacted Communities

Vulnerable Populations

Definition per RCW 19.405.020:

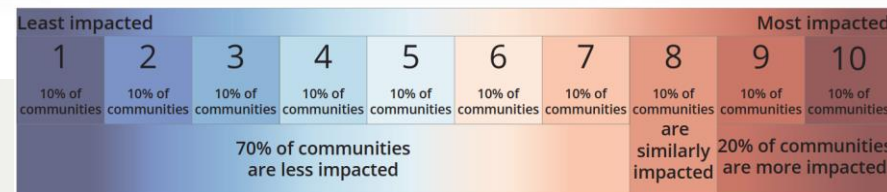
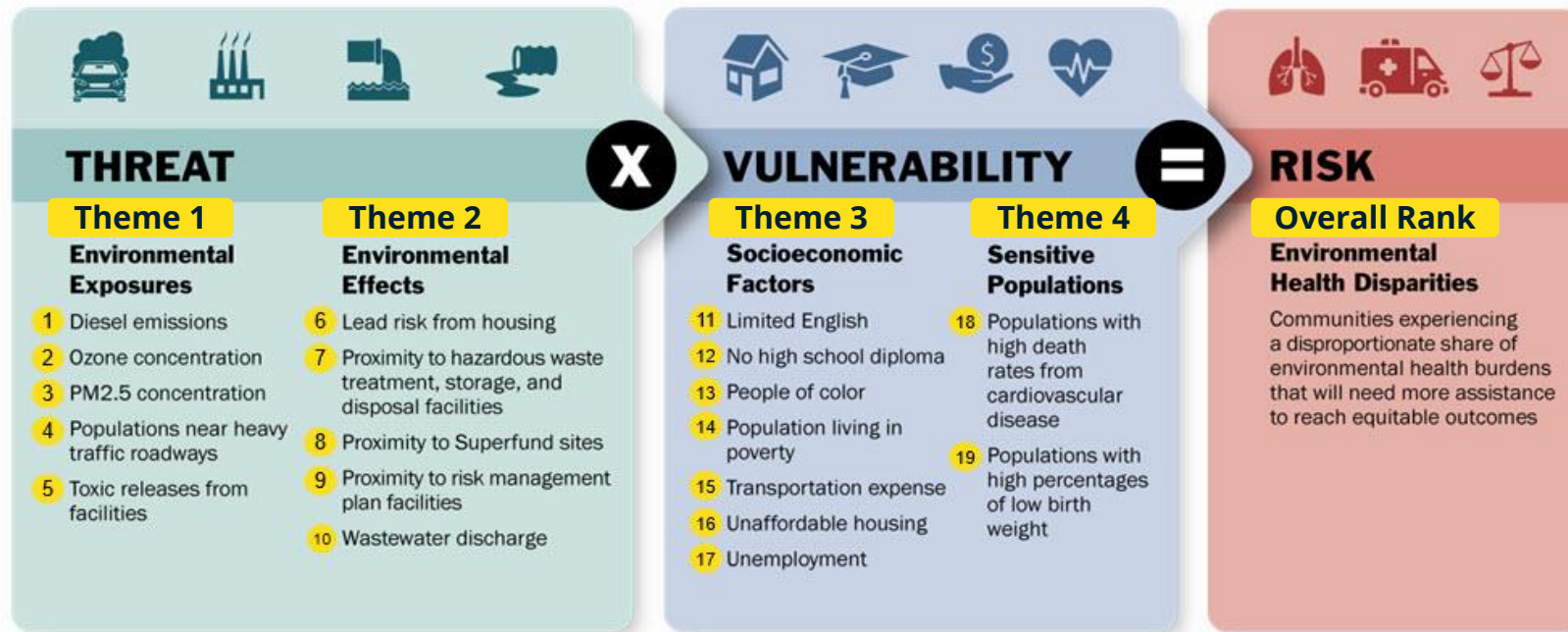
- means communities that experience a **disproportionate cumulative risk** from environmental burdens due to:
- (a) **Adverse socioeconomic factors**, including unemployment, high housing and transportation costs relative to income, access to food and health care, and linguistic isolation; and
- (b) **Sensitivity factors**, such as low birth weight and higher rates of hospitalization.

WAC 194-40-200 (4)(b) – Identify **vulnerable populations** based on the adverse **socioeconomic factors** and **sensitivity factors developed through a public process established by the utility** and describe and explain any changes from the utility's previous CEIP, if any;

Environmental Health Disparities Map

Washington Environmental Health Disparities

$$\text{Threat} \times \text{Vulnerability} = \text{Risk}$$



**Census
Tract
Rank**

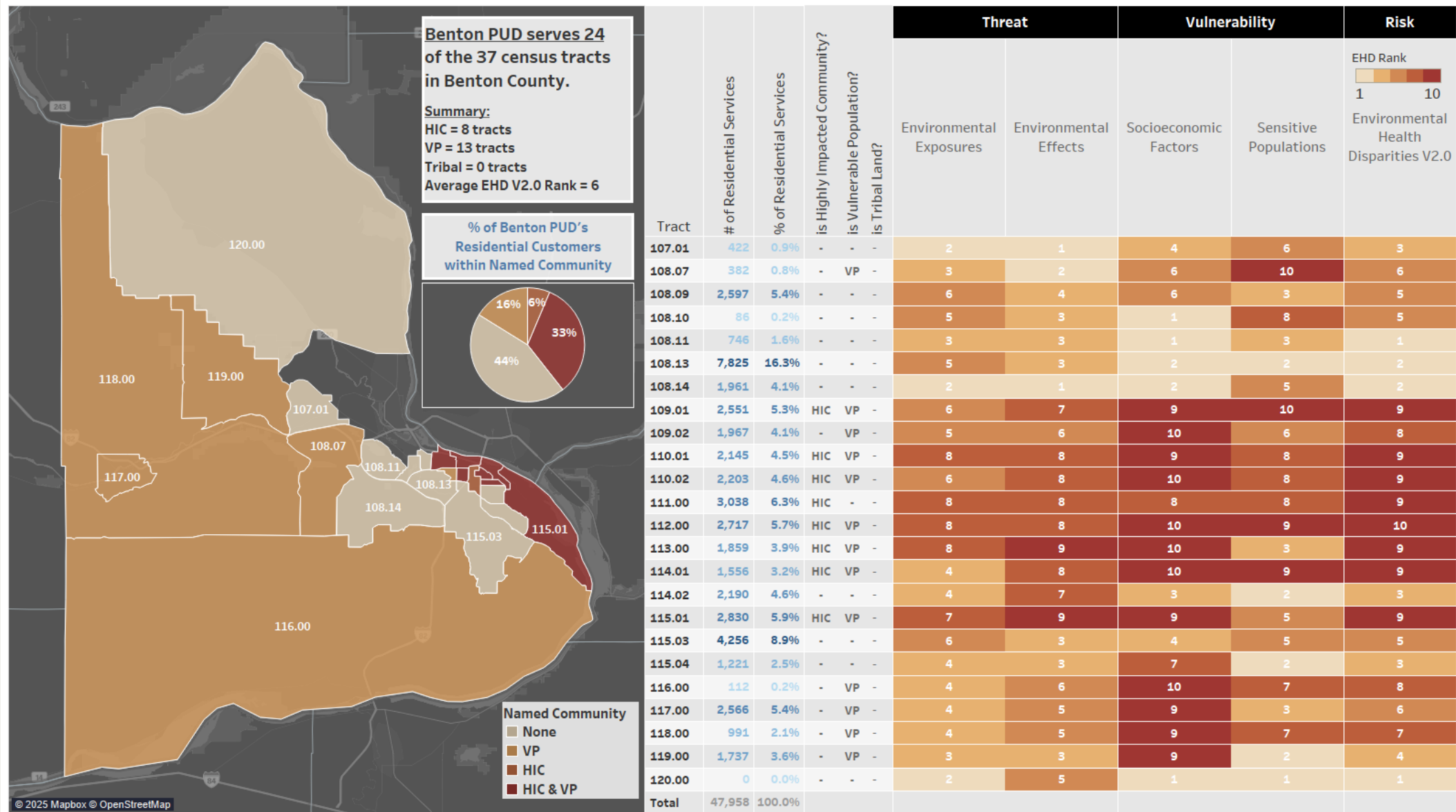
Identifying named communities by EHD rank:

- Highly Impacted Community
 - Overall Rank = **9 or 10**
 - Or **Tribal Land**
- Vulnerable Populations
 - **Socioeconomic Factors** Theme Rank = **9 or 10**
 - Or **Sensitive Populations** Theme Rank = **9 or 10**


Department of Health EHD Map:

<https://doh.wa.gov/data-and-statistical-reports/washington-tracking-network-wtn/washington-environmental-health-disparities-map>

Identification of Named Communities



EHD Map Detail

EHD Rank 1  10			Threat											Vulnerability											Risk	
			Environmental Exposures						Environmental Effects					Socioeconomic Factors						Sensitive Populations			Risk			
Tract	is Highly Impacted Community?	is Vulnerable Population?	Diesel Exhaust PM2.5 Emissions	Ozone Concentration	PM2.5 Concentration	Proximity to Heavy Traffic Roadways	Toxic Releases from Facilities (RSEI Model)	Environmental Exposures Theme	Lead Risk From Housing (%)	Proximity to Hazardous Waste Facilities	Proximity to Risk Management Plan (RMP) Facilities	Proximity to Superfund Sites	Wastewater Discharge	Environmental Effects Theme	No High School Diploma (%)	People of Color (Race/Ethnicity)	Population Living in Poverty <=185% of Federal Poverty Level (%)	Primary Language other than English	Transportation Expense	Unaffordable Housing	Unemployment (%)	Socioeconomic Factors Theme	Death from Cardiovascular Disease	Low Birth Weight	Sensitive Populations Theme	Environmental Health Disparities V2.0
107.01	-	-	2	10	3	3	2	2	1	2	2	4	1	1	8	4	5	5	9	1	2	4	10	2	6	3
108.07	-	VP	3	10	4	3	2	3	1	3	3	4	3	2	5	3	6	8	9	1	8	6	9	9	10	6
108.09	-	-	5	10	4	7	3	6	1	5	5	4	6	4	5	6	7	6	5	5	5	6	6	3	3	5
108.10	-	-	5	10	4	5	3	5	1	4	5	4	5	3	2	3	2	3	6	1	4	1	6	8	8	5
108.11	-	-	3	10	3	3	2	3	1	4	5	4	5	3	1	2	2	1	9	1	1	1	5	3	3	1
108.13	-	-	5	10	5	3	4	5	1	5	6	5		3	5	3	3	2	7	4	4	2	4	2	2	2
108.14	-	-	3	10	3	2	2	2	1	2	4	4		1	2	3	1	2	9	3	6	2	5	6	5	2
109.01	HIC	VP	5	10	6	5	3	6	7	6	6	5	4	7	9	8	8	4	5	8	10	9	10	8	10	9
109.02	-	VP	5	10	6	4	3	5	5	6	7	5	3	6	9	9	9	9	5	7	10	10	10	2	6	8
110.01	HIC	VP	6	10	9	6	3	8	6	8	8	6	4	8	9	8	10	9	6	8	4	9	6	8	8	9
110.02	HIC	VP	5	10	6	5	3	6	7	7	8	5	3	8	9	8	10	9	5	6	10	10	5	10	8	9
111.00	HIC	-	6	10	9	6	4	8	7	7	9	6	3	8	6	7	8	8	7	4	9	8	9	6	8	9
112.00	HIC	VP	6	10	9	6	4	8	8	6	10	6	4	8	10	10	10	10	5	9	10	10	8	8	9	10
113.00	HIC	VP	6	10	9	6	3	8	10	5	10	7	4	9	10	9	9	10	7	8	6	10	6	3	3	9
114.01	HIC	VP	4	10	6	3	3	4	7	5	10	6	3	8	10	9	10	9	6	8	7	10	10	7	9	9
114.02	-	-	4	10	6	2	3	4	7	4	8	6	2	7	5	4	4	7	8	1	2	3	4	2	2	3
115.01	HIC	VP	6	10	9	3	4	7	5	5	10	6	9	9	10	6	8	8	8	6	7	9	9	2	5	9
115.03	-	-	5	10	6	4	4	6	1	5	7	5		3	5	5	3	8	8	2	1	4	7	4	5	5
115.04	-	-	4	10	6	1	3	4	2	3	6	5		3	8	6	5	7	9	2	5	7	6	1	2	3
116.00	-	VP	2	10	9	2	2	4	5	2	7	4	8	6	10	9	5	10	9	2	10	10	8	5	7	8
117.00	-	VP	2	10	9	3	2	4	8	3	10	2	1	5	10	9	8	9	8	7	3	9	5	4	3	6
118.00	-	VP	2	10	9	3	2	4	8	3	8	2	1	5	10	9	7	10	9	5	2	9	5	8	7	7
119.00	-	VP	2	10	5	3	2	3	6	2	2	4	2	3	10	7	8	9	8	1	7	9	5	2	2	4
120.00	-	-	1	10	3	1	1	2		5	7	10	2	5	1	10	1	1	9	1	1	1	1	1	1	1

5. Equity

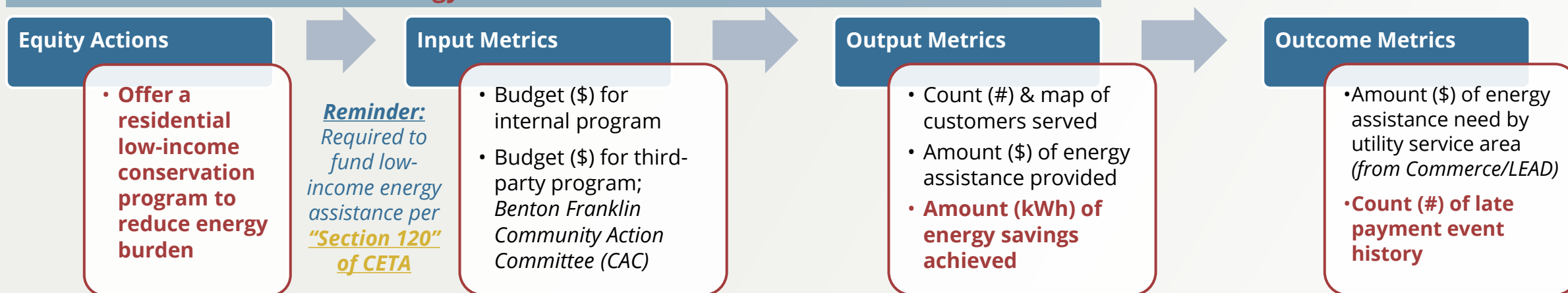
How is Benton PUD ensuring an **equitable transition** to clean energy?

Equity Actions & Metrics

Revisions for Hearing #2 - September 23, 2025

CETA Categories: Reduction of costs and risks & Reduction of burdens to vulnerable populations and highly impacted communities

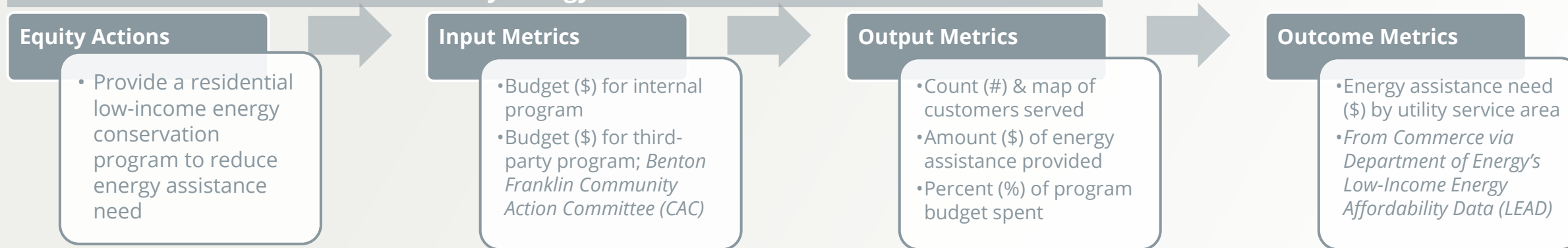
Indicator: Reduce household energy burden



From Hearing #1 - August 26, 2025

CETA Categories: Reduction of costs and risks & Reduction of burdens to vulnerable populations and highly impacted communities

Indicator: Reduce household electricity energy burden



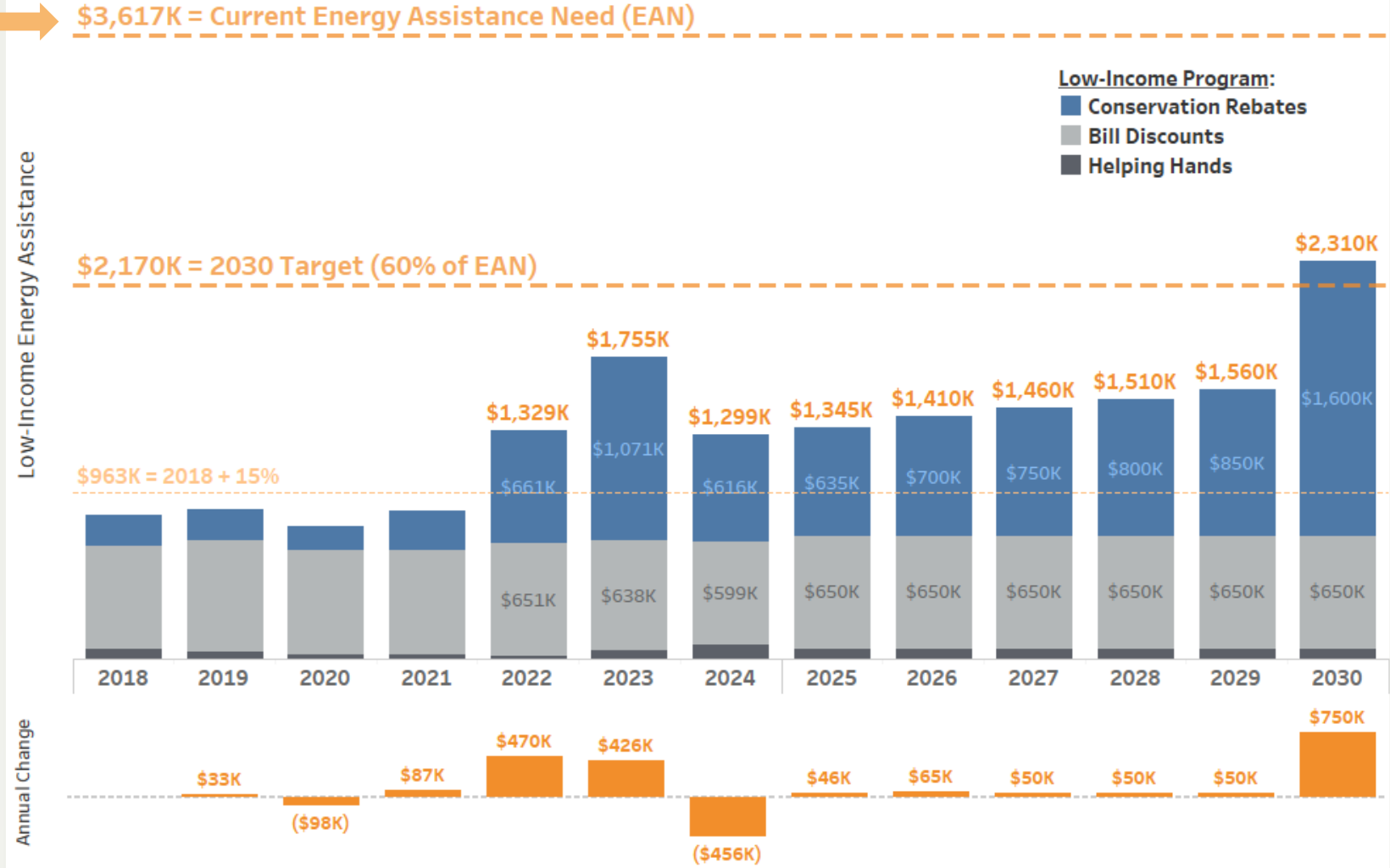
Low-Income Energy Assistance

U.S. Department of Energy **Low-Income Energy Affordability Data (LEAD) Tool**

RCW 19.405.120(4)(a)(iii) A cumulative assessment of previous funding levels for **energy assistance** compared to the funding levels needed to meet: (A) **Sixty percent of the current energy assistance need**, or increasing **energy assistance** by fifteen percent over the amount provided in 2018, whichever is greater, **by 2030**; and (B) **ninety percent** of the current energy assistance need by 2050.

Conservation Program - Budget Forecast			
Calendar Year	Total Conservation Program Costs*	BPA Energy Efficiency Incentive Funding (EEI)	Net Conservation Cost (Self Funding Liability)
2025	\$ 2,144,200	\$ (1,850,000)	\$ 294,200
2026	\$ 2,620,651	\$ (2,303,000)	\$ 317,651
2027	\$ 2,204,000	\$ (1,775,000)	\$ 429,000
2028	\$ 2,619,000	\$ (1,922,000)	\$ 697,000
2029	\$ 2,500,000	\$ (2,200,000)	\$ 300,000
2030	\$ 2,800,000	\$ (1,800,000)	\$ 1,000,000

* Includes all conservation program costs, not just low-income.

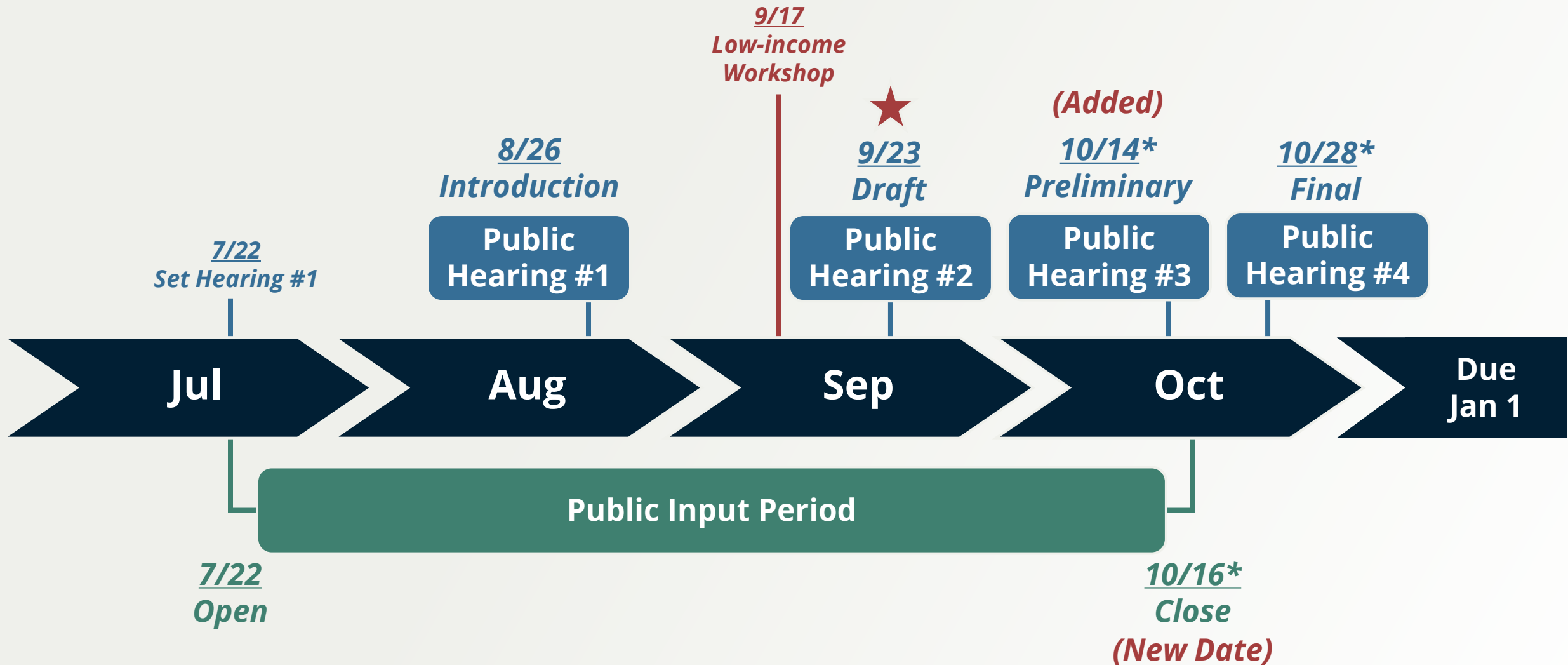


Notes: 1) Energy Assistance Need (EAN) and program budgets are subject to change. 2) EAN per 2024 assessment for 2022-2023 reporting. 3) 2018 funding was \$837,356, which is a correction to the previously reported amount of \$1,398,181 that included non-Benton PUD program assistance (e.g. Federal Low-Income Home Energy Assistance Program - LIHEAP).

6. Public Input

How is Benton PUD including **public input**?

Public Input Process

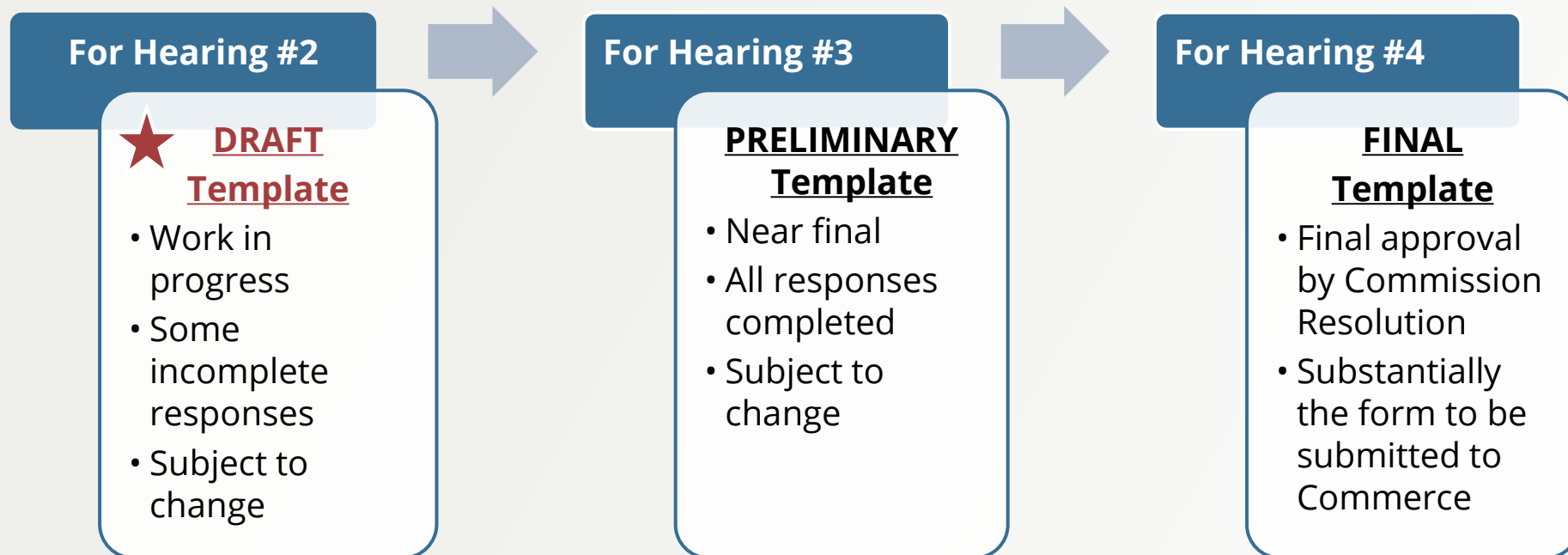


* Proposed dates, subject to change

Public Review of CEIP

- Opportunities for public review

- Final CEIP reporting document is an Excel spreadsheet
 - Commerce template is due Jan 1, 2026
- Benton PUD's CEIP template (.pdf) is available @ CEIP website



Public Input Options

- **CEIP website input form**
- **In-person or virtual meetings**
 - **CEIP public hearings**
 - **Regular Commission meetings**
 - *Note: All public hearings will be held in-person at 9 AM during regularly scheduled Commission meetings at our Kennewick office. Meetings include a virtual and telephone option. See Commission meeting and attendance details on our [Commission page](#).*
- **For additional questions** about the CEIP or to request assistance with participating in the public process:
 - Email power@bentonpud.org
 - or call Blake Scherer at (509) 585-5361



Tell us what matters to you

As we develop our 2026-2029 CEIP, we want to make sure it reflects what matters most to our customers. To support this, we're offering multiple ways for customers and interested stakeholders to provide input:

- Attend public hearings with our Commission to hear updates and share your thoughts
- Use the online form below to leave feedback anytime that works for you

We appreciate your participation and look forward to hearing from you. For the District's 2022-2025 CEIP, visit our [Resource Planning page](#).

0% Completed Required Fields Complete 0 / 4

English (US) ▾

Please share your input for us to consider as we develop the 2026-2029 CEIP: *

Next

<https://www.bentonpud.org/ceip>