



BPA Provider of Choice Above Contract High Water Mark (Above-CHWM) Election

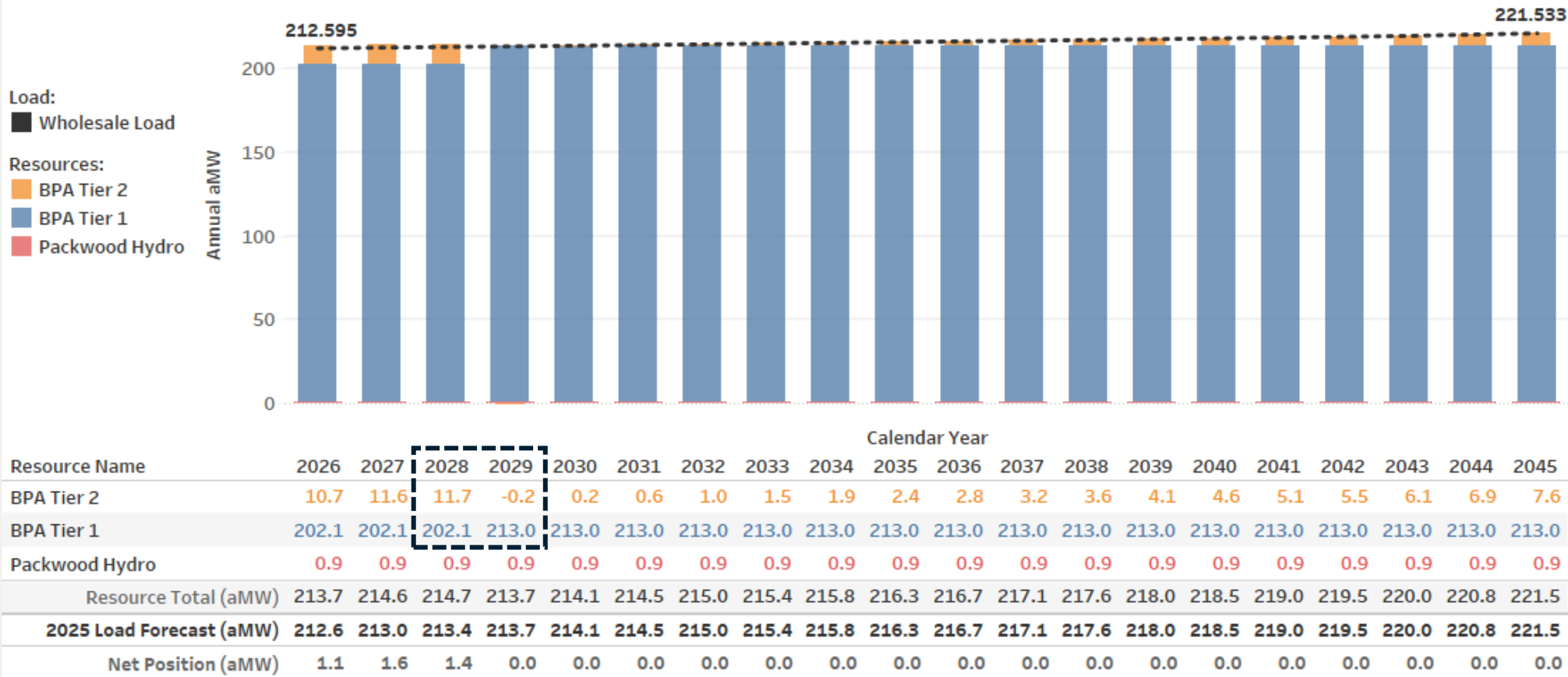
March 24, 2026
Information Only

Benton PUD's Resource Plan

- **Resource Plan** is to serve Above-CHWM with **BPA Tier 2**
- **Tier 2 load** forecast is relatively small
- **BPA Tier 1 CHWM** increasing 10/1/2028

20-Year Load and Resource Forecast

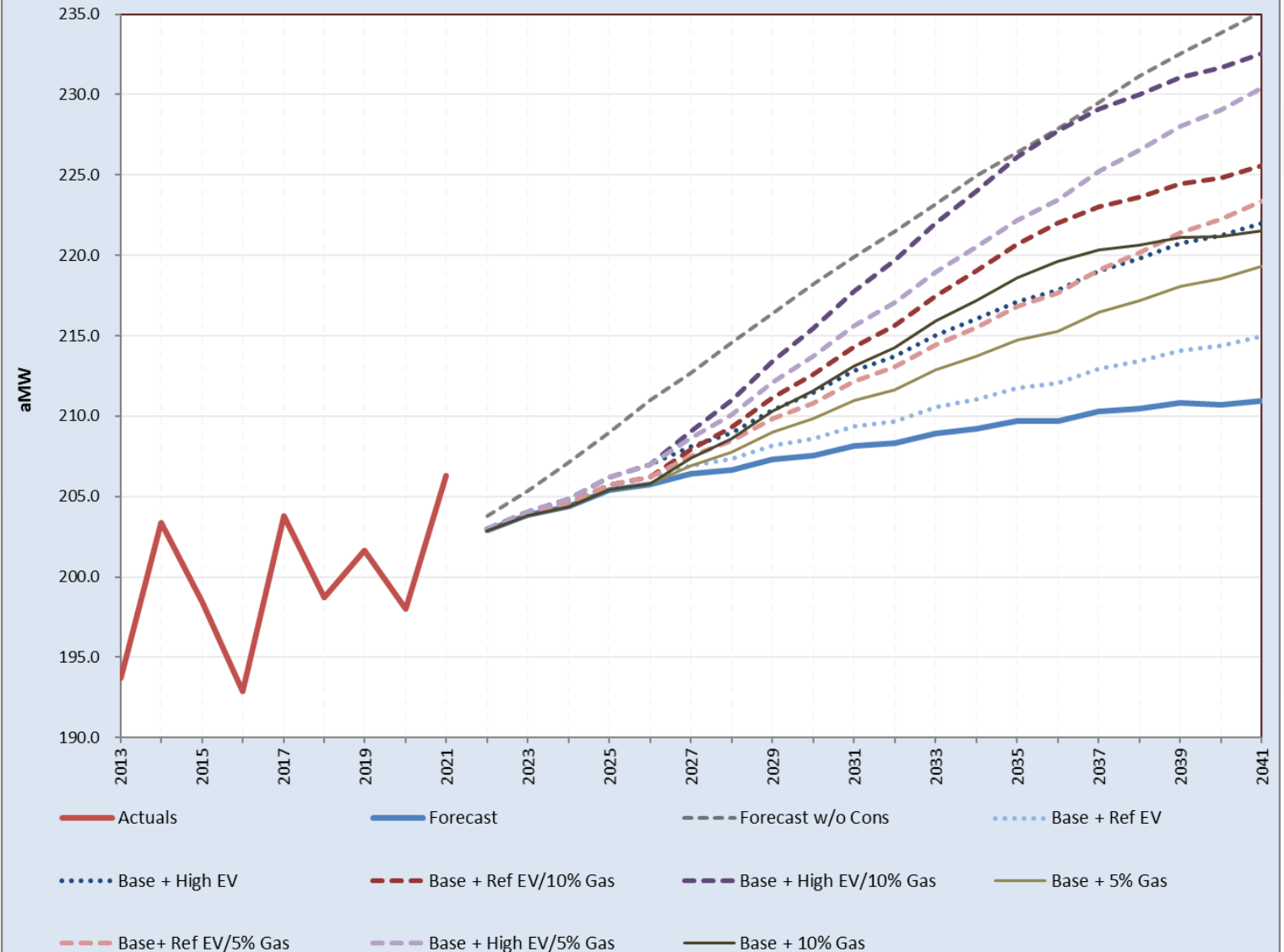
Tier 1 as of BPA's 3/10/2026 Draft Contract High Water Mark (CHWM)



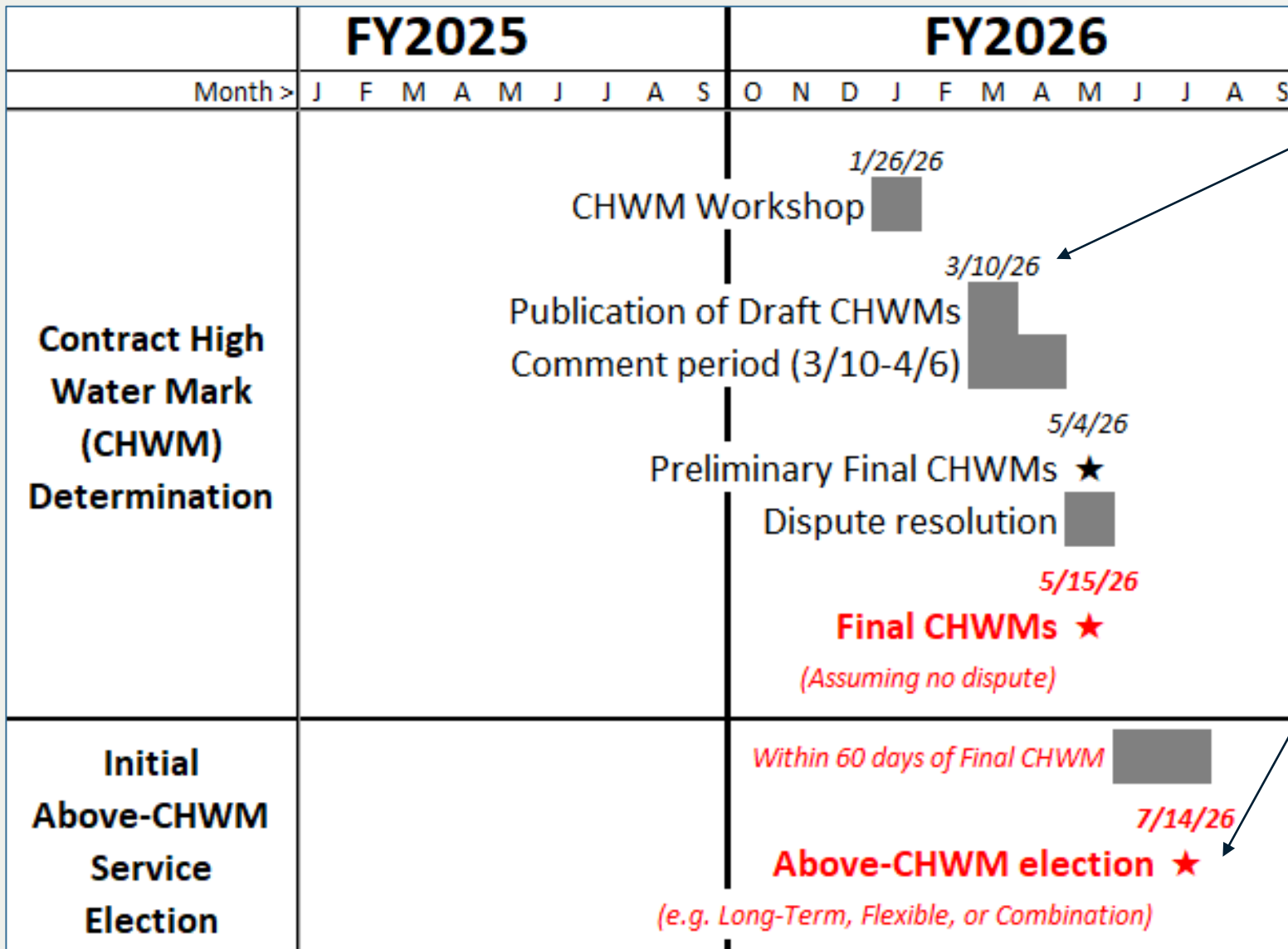
Retail Load Electrification Scenarios

- **Electrification scenarios** from the 2022 Load Forecast
- **Cumulative load addition by 2041**
(2041 base forecast = 210.9 aMW)

Growth Type	Lower Scenario (aMW)	Higher Scenario (aMW)
Electric Vehicle	+ 4.1	+ 11.1
Gas to Electric	+ 8.4	+ 10.6
Total EV + Gas	+ 12.5	+ 21.7



Above-CHWM Election Timeline

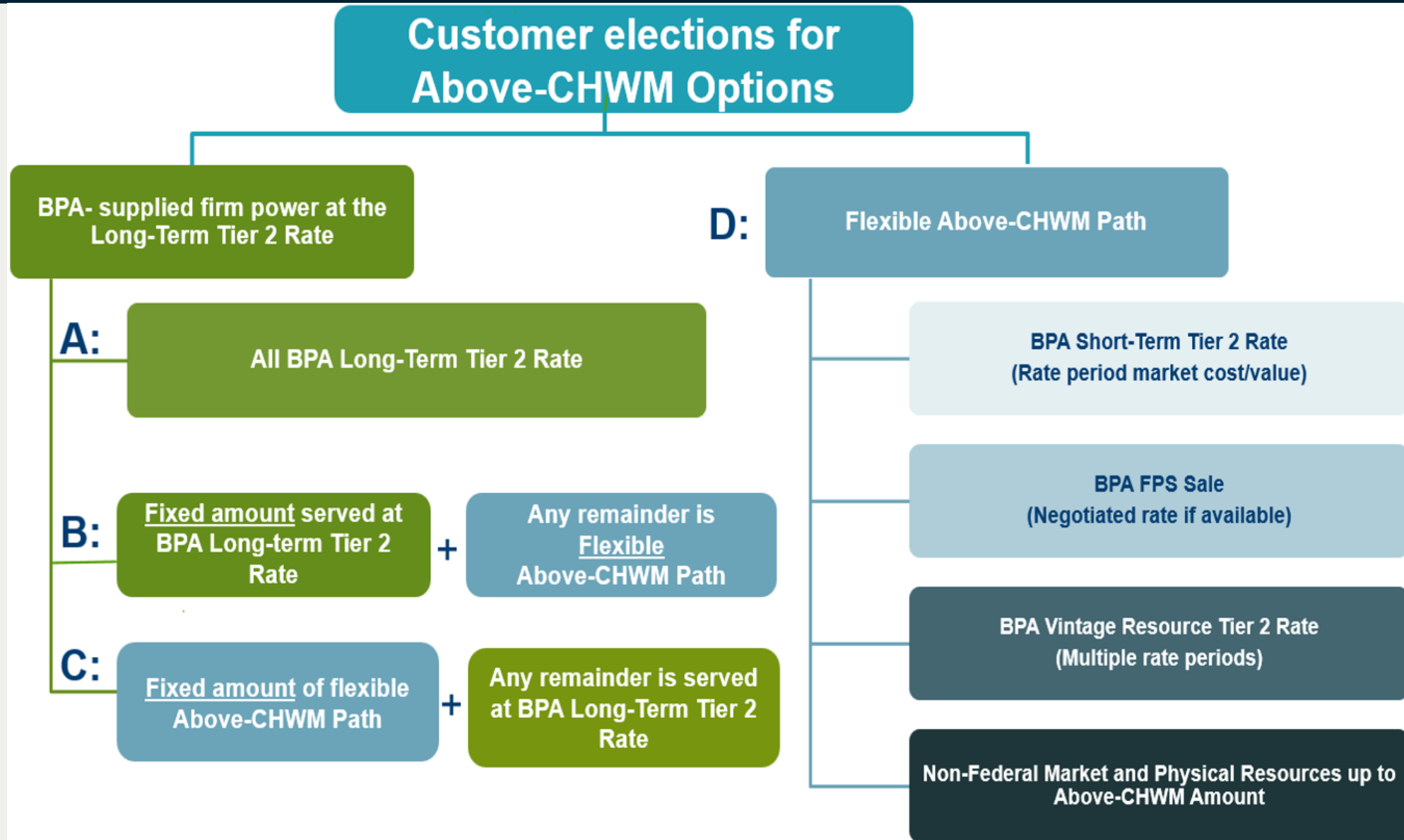


- Draft CHWM Amount published 3/10/2026

		Provider of Choice CHWM
<i>Note: All data is in aMW</i>		
BES	Customer	
10024	Benton County PUD #1	213.007

- Earliest election deadline is 7/14/2026, assuming no dispute resolution
- Grant PUD's 9th Circuit petition for review of BPA's Final CHWM Policy is pending (timing?)

Above-CHWM Election Options



Above-CHWM Election Changes

- **One-time** Right to Reduce Tier 2 Long-Term Without a Fee
 - If requested before **August 1, 2027, AND**
 - BPA has **not** acquired power to serve Benton PUD's Tier 2 Long-Term
- **One-time** Right to Reduce Tier 2 Long-Term With a Fee & Charges
 - Change is only one-way, to **reduce Long-Term** (cannot add Long-Term)
 - Change is **binding** for the remaining term of the Agreement
 - Subject to **3-years notice** and the **start of a rate period** (6 windows)
 - Subject to **Change Charge** if change results in cost shift
 - Subject to **Change Fee** set each rate period (*Min. \$0.05/MWh – Max. \$0.10/MWh*)
 - @ **\$0.05/MWh** = **\$186,594** = 2 years x (213.007 aMW x 8,760 hours/year) x \$0.05/MWh
 - @ **\$0.10/MWh** = **\$373,188** = 2 years x (213.007 aMW x 8,760 hours/year) x \$0.10/MWh

Above-CHWM Election Considerations

- **BPUD 2026 Load Forecast** to Commission **April 28, 2026**
- **BPA Final CHWM** by **May 15, 2026**, possibly delayed if disputed
- **BPUD 2026 Resource Plan** to Commission **May-July 2026**
- **BPA Needs Assessment** to be completed **Winter 2026-2027** (*BPA's obligation*)
- **BPA Resource Program** to be published **December 2027**
- **BPA Resource Acquisition** (needs assessment is prerequisite)
 - **Tier 2 Long-Term** is **firm obligation**
 - **Tier 2 Short-Term** is elected each rate period (obligation for BPA, but **not** guaranteed available)
- **BPA Tier 2 Rates** forecast uncertainty - Tier 2 Long-Term has potential to be priced at Tier 1 rates, if existing firm inventory is serving (**not** applicable to Tier 2 Short-Term)
- **BPA Environmental Attributes** accounting process to be determined each rate case

Above-CHWM Election Process

1. **Today**, Commission info only presentation
2. **Next**, Risk Management Committee (RMC) review
3. **Later**, Commission motion authorizing the General Manager to send **Tier 2 election option** to BPA on Benton PUD letterhead
4. **After received**, BPA will update Section 2.1 of **Exhibit C** of the District's Power Sales Agreement (Contract #25-51-02)

Provided below is a table Benton PUD may use as a template when sending in your Above-CHWM Load service election.

Customer Name:	Benton PUD	
Above-CHWM Options	Tier 2 Service Election <i>(Add an "X" in one of the four options in this column)</i>	Fixed Average Megawatt (aMW) Election Amount <i>(Indicate fixed amount if Option B or C were elected for the Tier 2 Service Election)</i>
Option A	✘	N/A
Option B		
Option C		
Option D		N/A

Above-CHWM Election Questions

Questions?