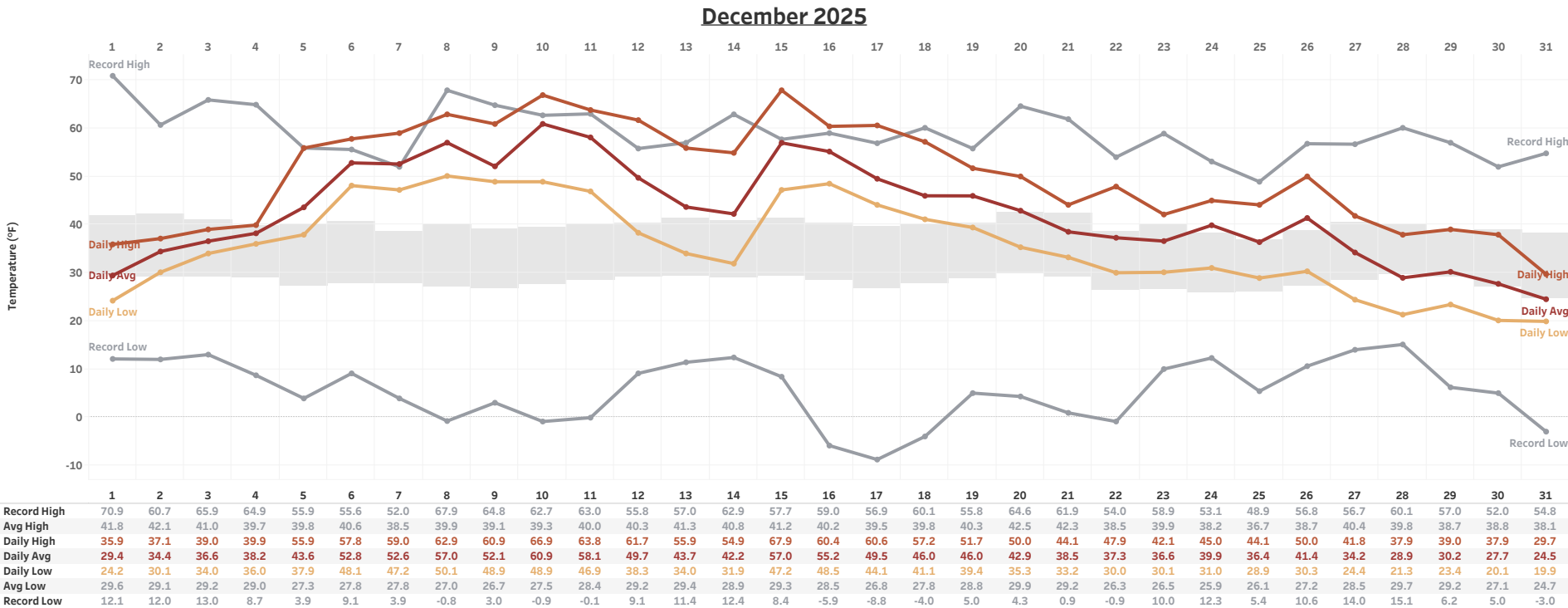


Daily Temperature

Daily temperatures at Tri-Cities Airport with [daily averages & records from 2000-2024](#)

Month
All

Month Year
December 2025



Hourly Temperature

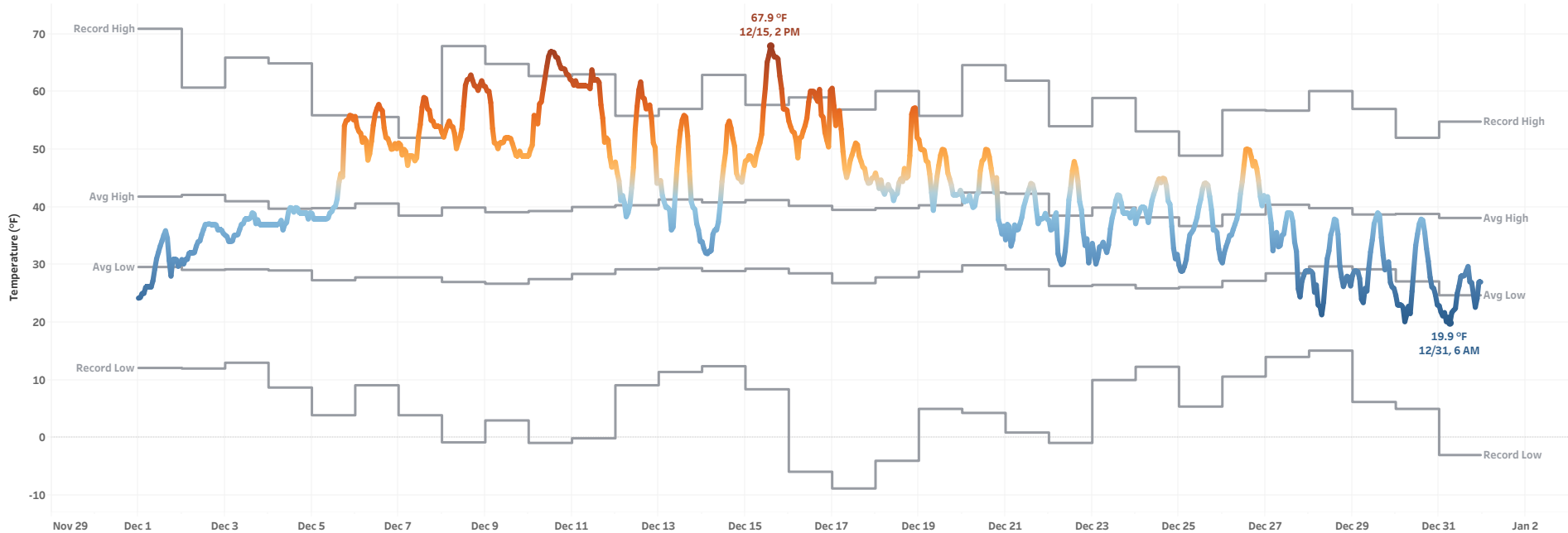
Hourly temperatures at Tri-Cities Airport with [daily averages & records from 2000-2024](#)

Hourly Temperature (°F)
20 68

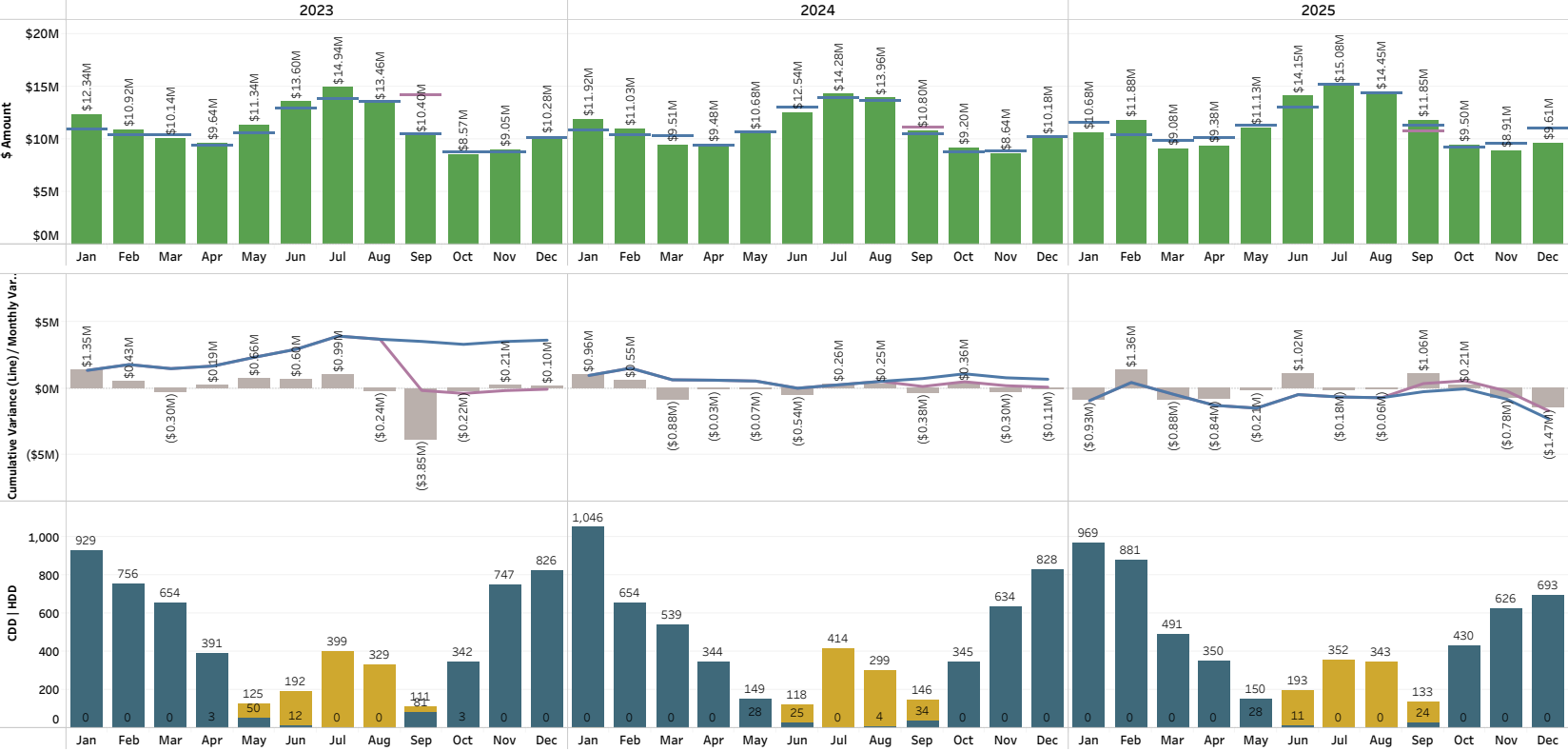
Month
All

Month Year
December 2025

December 2025



Cumulative Retail Revenue Budget vs Actuals (Original and Amended Budget): [All](#)



Rate Class
All

Filter Date Year
Multiple values

Filter Date Month
All

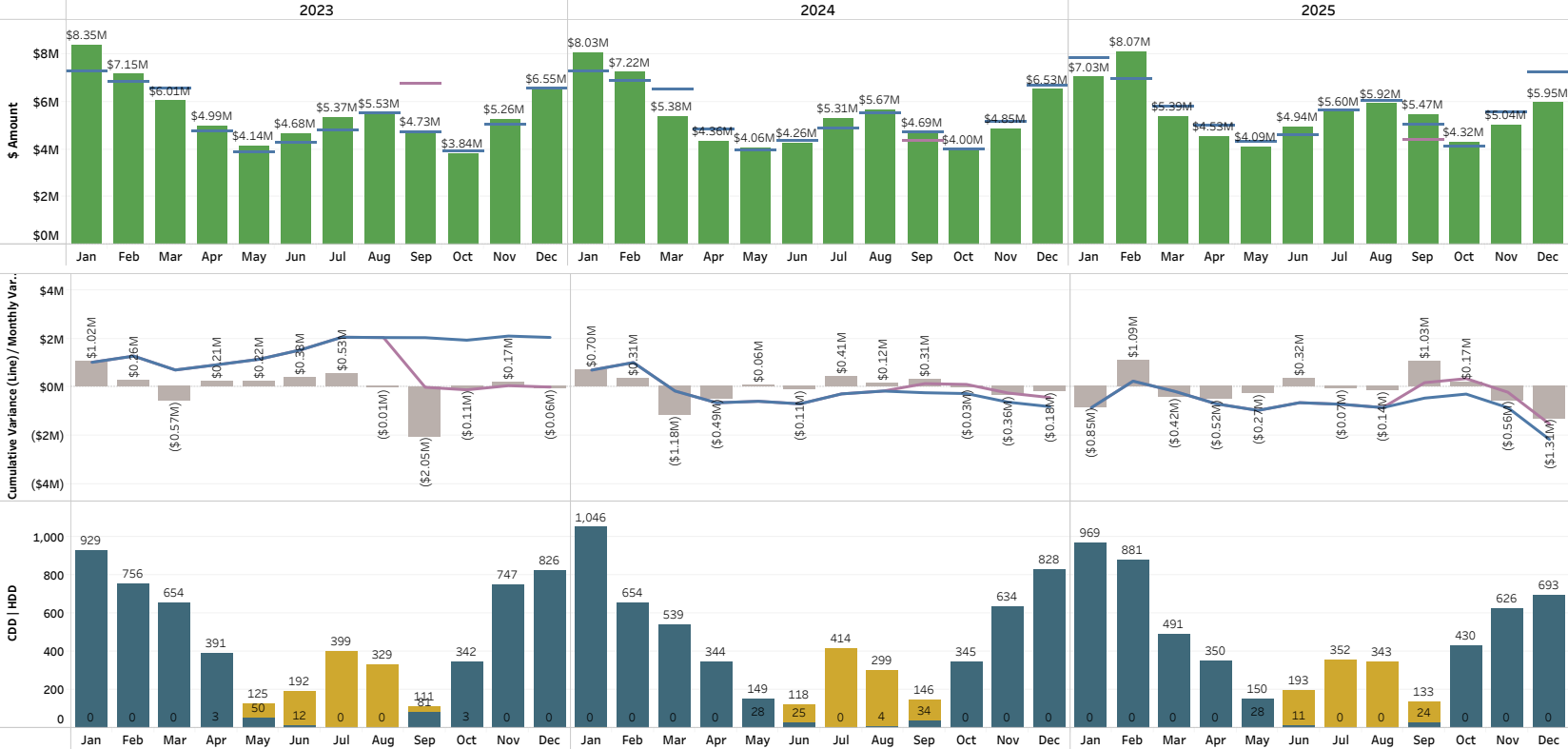
Legend
Budget
Amended Budget
Actual
Cumulative Variance Original
Cumulative Variance Amended
Month Over / (Under)
Heating Degree Days
Cooling Degree Days

Note: Cumulative budget amendment changes are reflected in the month of September.

Cooling Degree Days (CDD) are a measure of how hot the temperature was on a given day or during a period of days. CDD's quantify the demand for energy needed to cool buildings. The higher the CDD's, the hotter the region is.

Heating Degree Days (HDD) are a measure of how cold the temperature was on a given day or during a period of days. HDD's quantify the demand for energy needed to heat buildings. The higher the HDD's, the colder the region is.

Cumulative Retail Revenue Budget vs Actuals (Original and Amended Budget): Residential Sales



Rate Class
Residential Sales

Filter Date Year
Multiple values

Filter Date Month
All

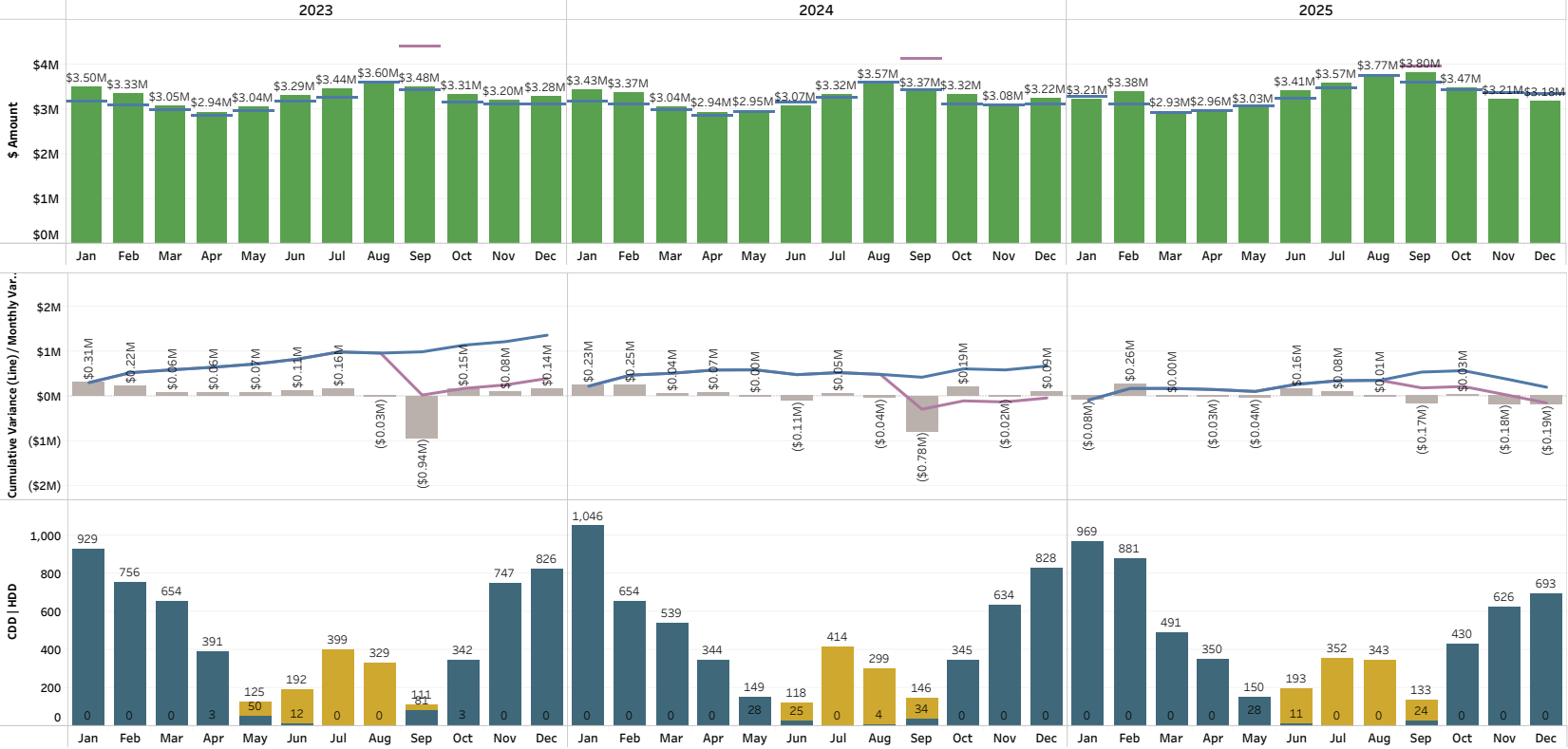
Legend
■ Budget
■ Amended Budget
■ Actual
■ Cumulative Variance Original
■ Cumulative Variance Amended
■ Month Over / (Under)
■ Heating Degree Days
■ Cooling Degree Days

Note: Cumulative budget amendment changes are reflected in the month of September.

Cooling Degree Days (CDD) are a measure of how hot the temperature was on a given day or during a period of days. CDD's quantify the demand for energy needed to cool buildings. The higher the CDD's, the hotter the region is.

Heating Degree Days (HDD) are a measure of how cold the temperature was on a given day or during a period of days. HDD's quantify the demand for energy needed to heat buildings. The higher the HDD's, the colder the region is.

Cumulative Retail Revenue Budget vs Actuals (Original and Amended Budget): [Large General Service Sales](#), [Medium General Service Sales](#), [Small General Service Sales](#)



Rate Class
Multiple values

Filter Date Year
Multiple values

Filter Date Month
All

Legend
Budget
Amended Budget
Actual

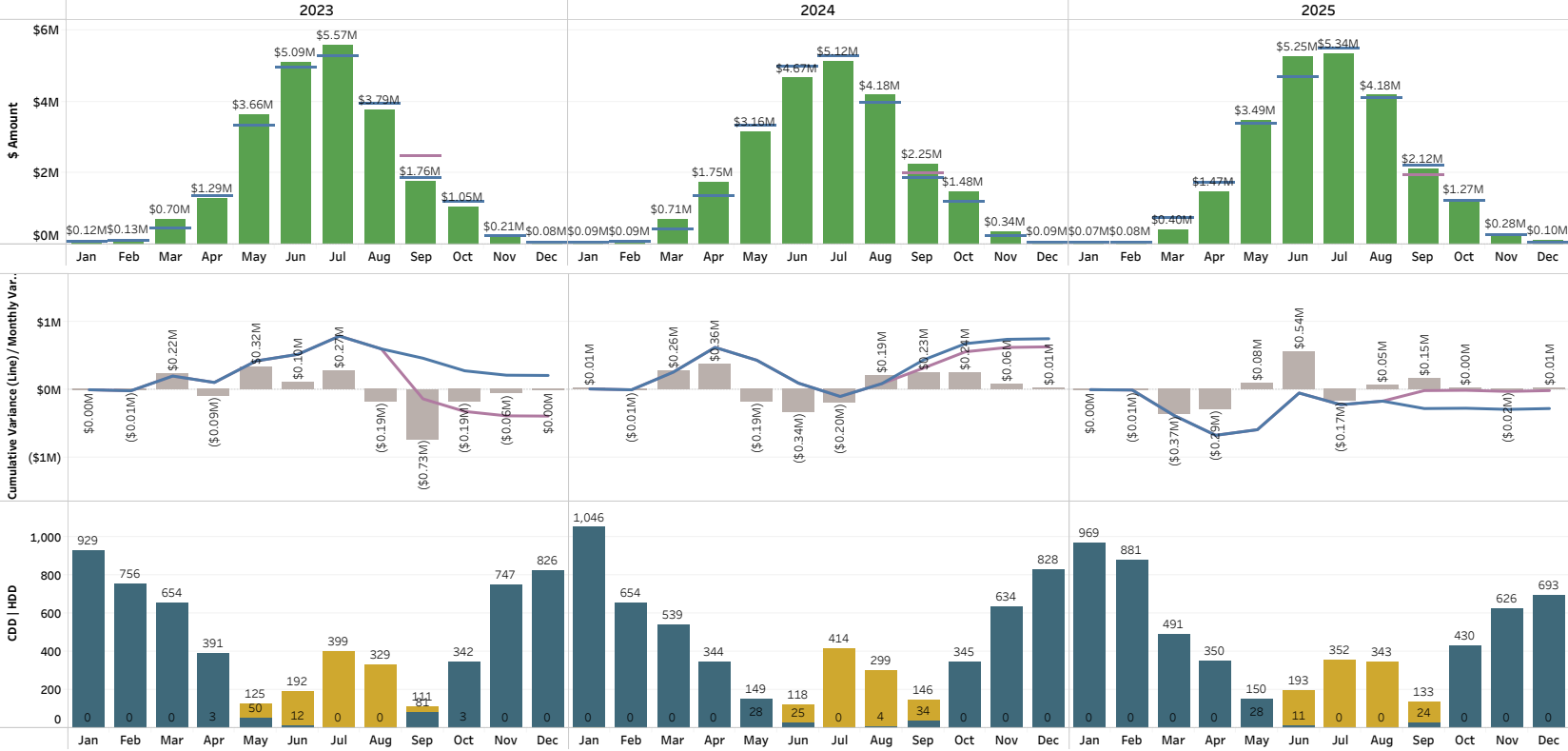
Cumulative Variance Original
Cumulative Variance Amended
Month Over / (Under)
Heating Degree Days
Cooling Degree Days

Note: Cumulative budget amendment changes are reflected in the month of September.

Cooling Degree Days (CDD) are a measure of how hot the temperature was on a given day or during a period of days. CDD's quantify the demand for energy needed to cool buildings. The higher the CDD's, the hotter the region is.

Heating Degree Days (HDD) are a measure of how cold the temperature was on a given day or during a period of days. HDD's quantify the demand for energy needed to heat buildings. The higher the HDD's, the colder the region is.

Cumulative Retail Revenue Budget vs Actuals (Original and Amended Budget): [Large Irrigation Sales](#)



Rate Class
Large Irrigation Sales

Filter Date Year
Multiple values

Filter Date Month
All

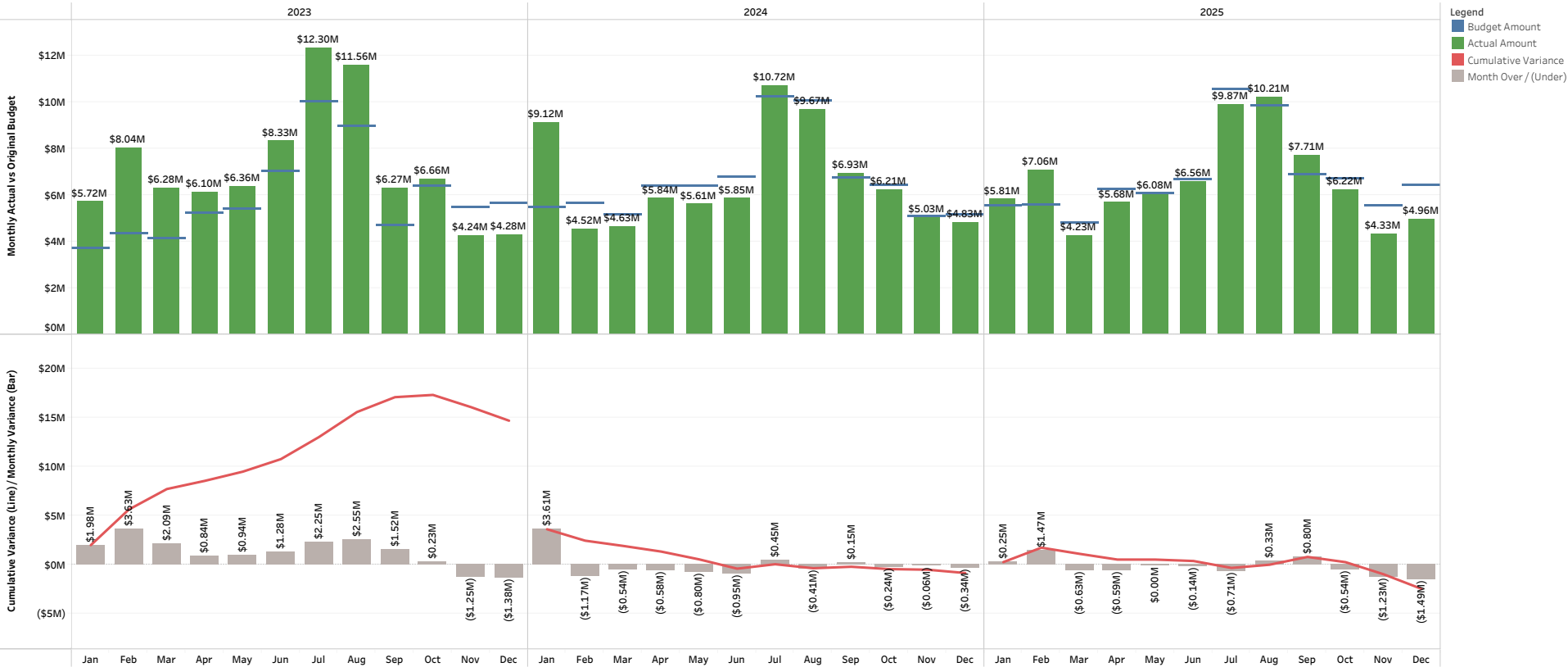
Legend
■ Budget
■ Amended Budget
■ Actual
■ Cumulative Variance Original
■ Cumulative Variance Amended
■ Month Over / (Under)
■ Heating Degree Days
■ Cooling Degree Days

Note: Cumulative budget amendment changes are reflected in the month of September.

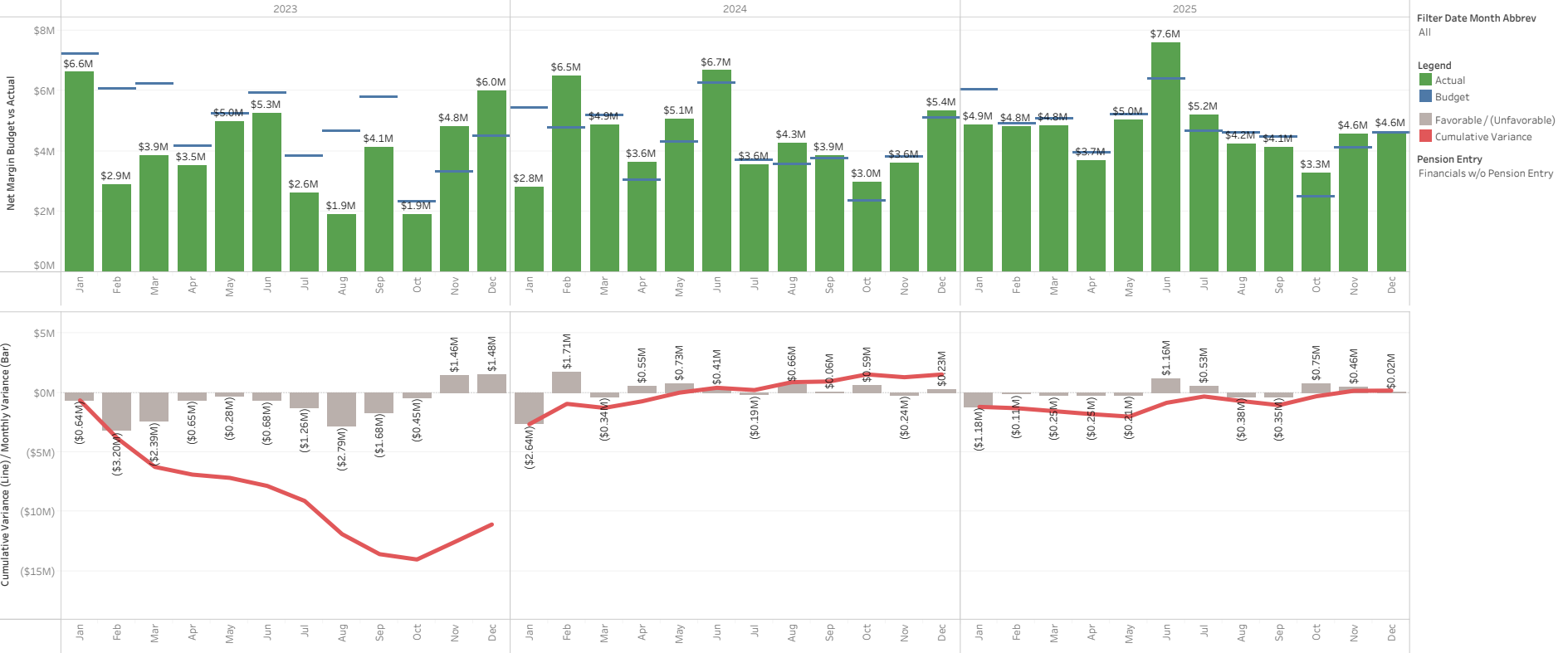
Cooling Degree Days (CDD) are a measure of how hot the temperature was on a given day or during a period of days. CDD's quantify the demand for energy needed to cool buildings. The higher the CDD's, the hotter the region is.

Heating Degree Days (HDD) are a measure of how cold the temperature was on a given day or during a period of days. HDD's quantify the demand for energy needed to heat buildings. The higher the HDD's, the colder the region is.

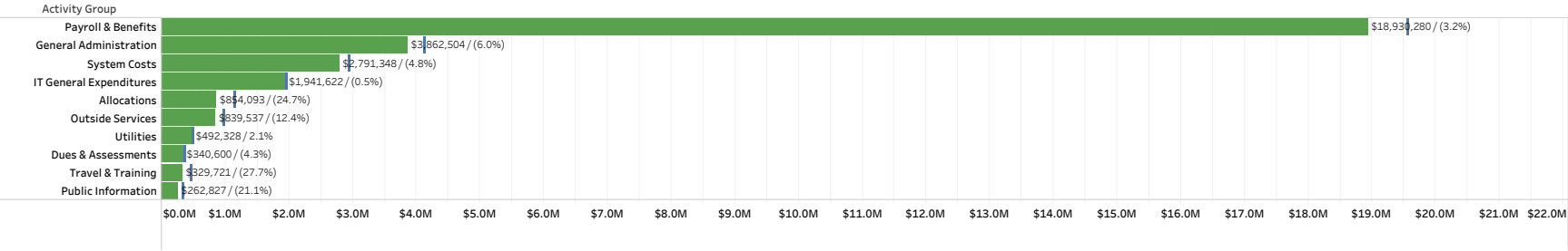
Cumulative Net Power Cost Budget vs Actuals (Original Budget Only): [All](#)



Cumulative Net Margin Original Budget vs Actuals



2025 Top 10 YTD O&M Actuals & Original Budget by Activity Group Through December



Enter Year
2025

Select Month
December

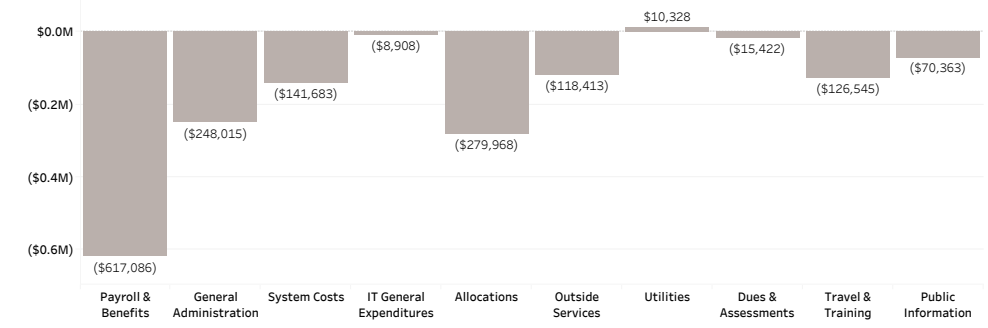
Top N - Activity Category
10

Dept #
All

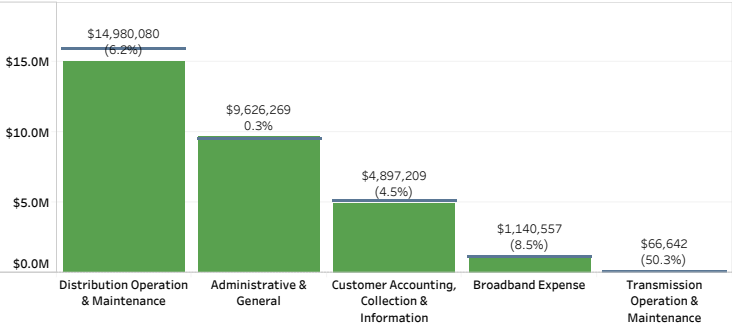
Budget Version
☒ Actuals
☐ Amended Budget
☒ Original Budget

Pension Entry
Financials w/o Pension En..

2025 Top 10, YTD O&M Budget Variance by Activity Group Through December



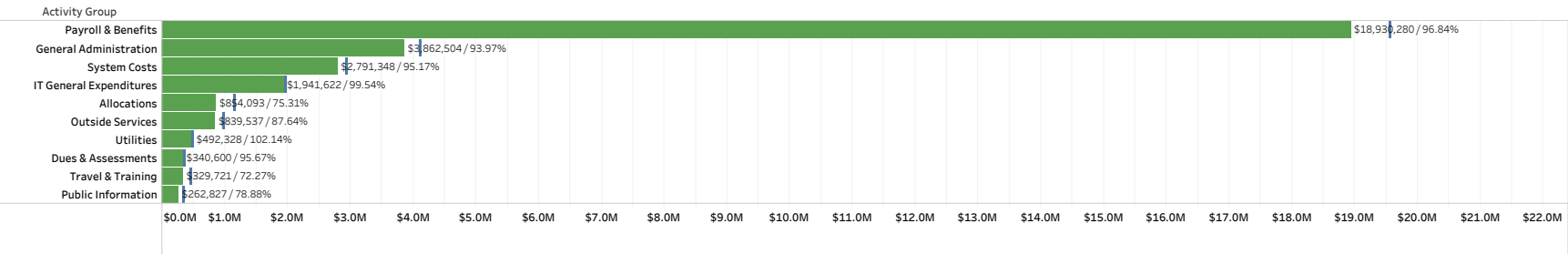
2025 YTD O&M Actuals & Original Budget by Financial Statement Group Through December



Legend
☒ YTD Budget
☒ YTD Actuals
☐ YTD Over/(Under)

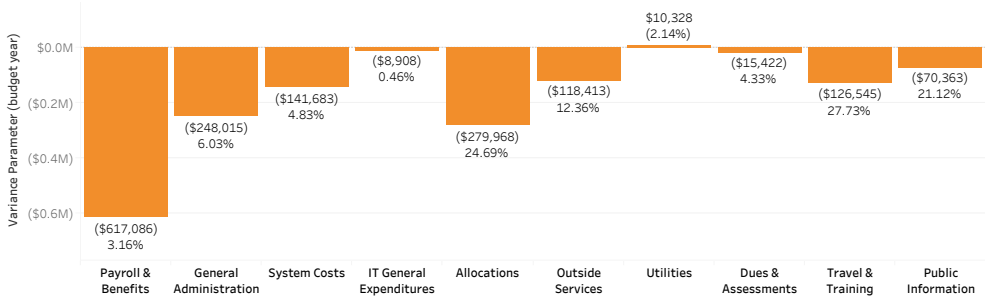
2025 Top 10 YTD O&M Actuals & Original Budget by Activity Group Through December

% of Year: 100.00%



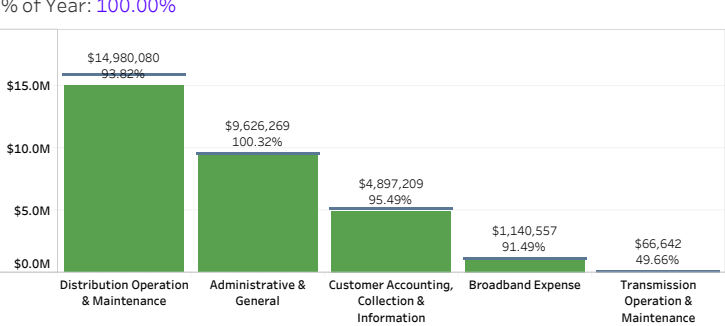
2025 Top 10, Remaining Budget Amount by Activity Group through December

% of Year Remaining: 0.00%



2025 YTD O&M Actuals & Original Budget by Financial Statement Group Through December

% of Year: 100.00%



Capital Drill Down with 2025 Actuals & Original Budget

% of Year: 100.0%

Category	Group	Actual Amount	Budget Amount	Variance	% of Budget
Transmission	Transmission Projects	\$696,212	\$953,314	(\$257,102)	73.03%
Distribution	Capacity & Reliability	\$9,647,358	\$9,125,242	\$522,116	105.72%
	Customer Growth	\$10,797,648	\$9,331,054	\$1,466,594	115.72%
	General Plant	\$1,099,704	\$935,496	\$164,208	117.55%
	Other	\$134,130	\$170,634	(\$36,504)	78.61%
	Repair & Replace	\$3,378,311	\$3,718,451	(\$340,140)	90.85%
Broadband	Broadband	\$1,571,107	\$1,417,038	\$154,068	110.87%
General Plant	General Plant	\$1,397,551	\$1,333,792	\$63,759	104.78%
Information Technology	Information Technology	\$1,570,158	\$3,968,413	(\$2,398,255)	39.57%
Other	Other	\$297,209		\$297,209	
Grand Total		\$30,589,389	\$30,953,434	(\$364,045)	98.82%

Select Year
2025

Select Month(s)

- ☒ Jan
- ☒ Feb
- ☒ Mar
- ☒ Apr
- ☒ May
- ☒ Jun
- ☒ Jul
- ☒ Aug
- ☒ Sep
- ☒ Oct
- ☒ Nov
- ☒ Dec
- ☒ Budget

Budget Version

☒ Actuals

☐ Amended Budget

☒ Original Budget

Pension Entry

Financials w/o Pension Entry

Capital Drill Down with 2025 Actuals & Amended Budget

% of Year: 100.0%

Category	Group	Actual Amount	Budget Amount	Variance	% of Budget
Transmission	Transmission Projects	\$696,212	\$1,827,847	(\$1,131,635)	38.09%
Distribution	Capacity & Reliability	\$9,647,358	\$10,022,076	(\$374,719)	96.26%
	Customer Growth	\$10,797,648	\$10,498,495	\$299,154	102.85%
	General Plant	\$1,099,704	\$1,133,144	(\$33,440)	97.05%
	Other	\$134,130	\$732,566	(\$598,436)	18.31%
	Repair & Replace	\$3,378,311	\$4,420,211	(\$1,041,900)	76.43%
Broadband	Broadband	\$1,571,107	\$1,413,981	\$157,126	111.11%
General Plant	General Plant	\$1,397,551	\$1,331,994	\$65,557	104.92%
Information Technology	Information Technology	\$1,570,158	\$2,364,331	(\$794,173)	66.41%
Other	Other	\$297,209		\$297,209	
Grand Total		\$30,589,389	\$33,744,646	(\$3,155,257)	90.65%

Select Year
2025

Select Month(s)

- ☒ Jan
- ☒ Feb
- ☒ Mar
- ☒ Apr
- ☒ May
- ☒ Jun
- ☒ Jul
- ☒ Aug
- ☒ Sep
- ☒ Oct
- ☒ Nov
- ☒ Dec
- ☒ Budget

Budget Version

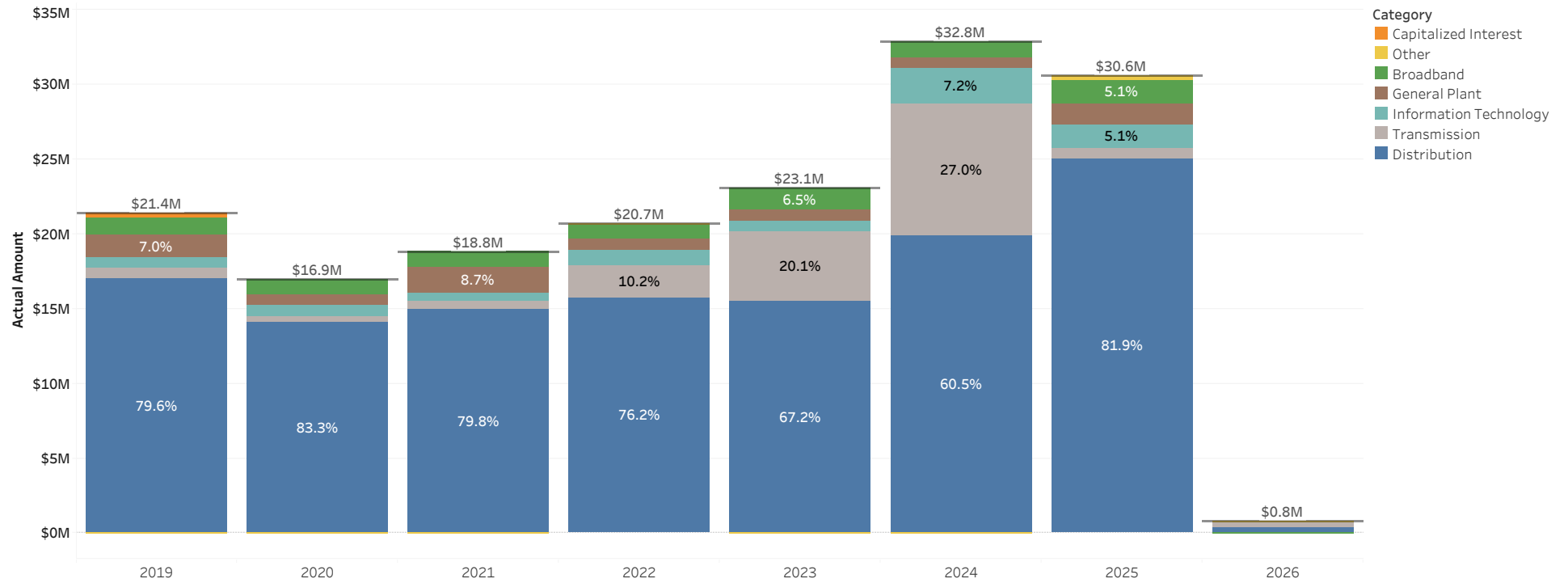
☒ Actuals

☒ Amended Budget

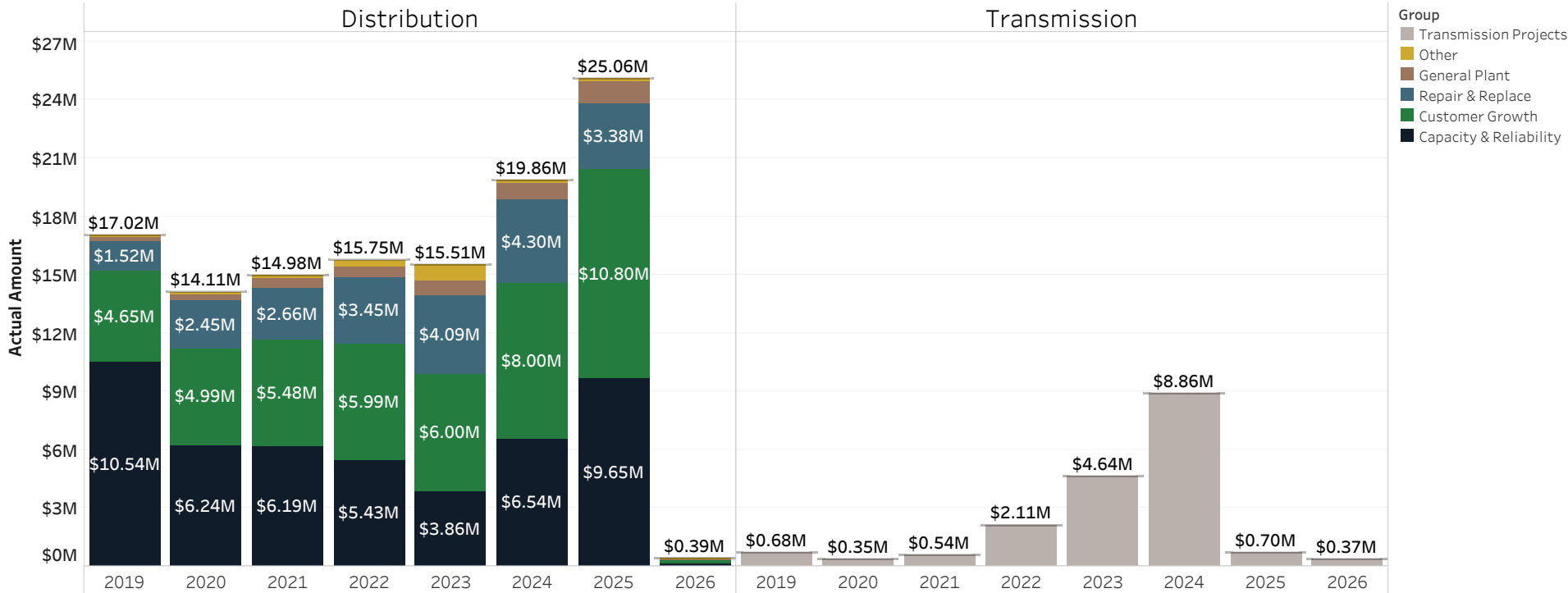
☐ Original Budget

Pension Entry
Financials w/o Pension Entry

Gross Capital Expenditures by Category (Actuals)



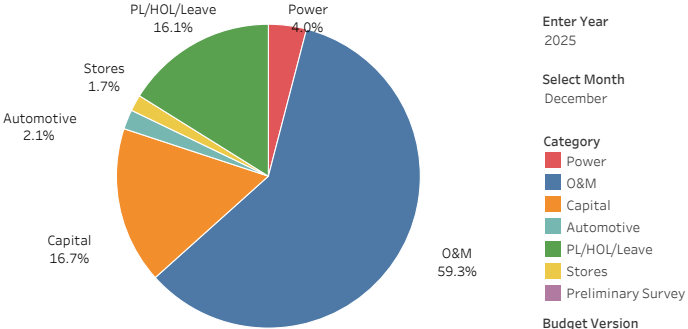
Gross Capital Expenditures by Group (Actuals)



YTD December 2025 Labor by Category: (Activity 11)
Actuals & Original Budget

Category	Current Year Actuals	Current Year Budget	Over / (Under)	Current Year % Variance	Prior Year Actual	Prior Year Variance	Prior Year % Variance
Power	\$670,385	\$740,037	(\$69,652)	(9.4%)	\$698,315	(\$27,930)	(4.0%)
O&M	\$10,516,848	\$10,873,377	(\$356,529)	(3.3%)	\$10,167,024	\$349,824	3.4%
Capital	\$3,533,286	\$3,055,157	\$478,129	15.6%	\$3,415,175	\$118,111	3.5%
Automotive	\$305,490	\$380,839	(\$75,349)	(19.8%)	\$338,737	(\$33,247)	(9.8%)
PL/HOL/Leave	\$2,672,974	\$2,953,157	(\$280,183)	(9.5%)	\$2,514,783	\$158,190	6.3%
Stores	\$287,448	\$319,663	(\$32,215)	(10.1%)	\$314,084	(\$26,636)	(8.5%)
Preliminary Survey			\$0		(\$8,279)	\$8,279	(100.0%)
Grand Total	\$17,986,430	\$18,322,230	(\$335,800)	(1.8%)	\$17,441,573	\$544,857	3.1%

YTD December 2025 Budget: (Activity 11)



Activity 11

Enter Year 2025

Select Month December

Category

Power

O&M

Capital

Automotive

PL/HOL/Leave

Stores

Preliminary Survey

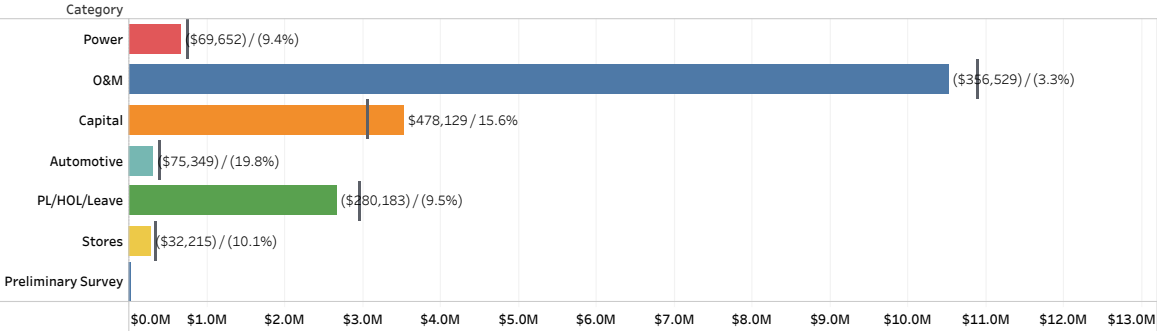
Budget Version

☒ Actuals

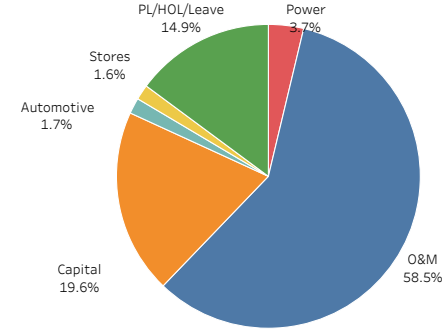
☐ Amended Budget

☒ Original Budget

YTD December 2025 Labor by Category: (Activity 11)
(Amount displayed is actuals minus budget / % variance from budget)



YTD December 2025 Actuals: (Activity 11)



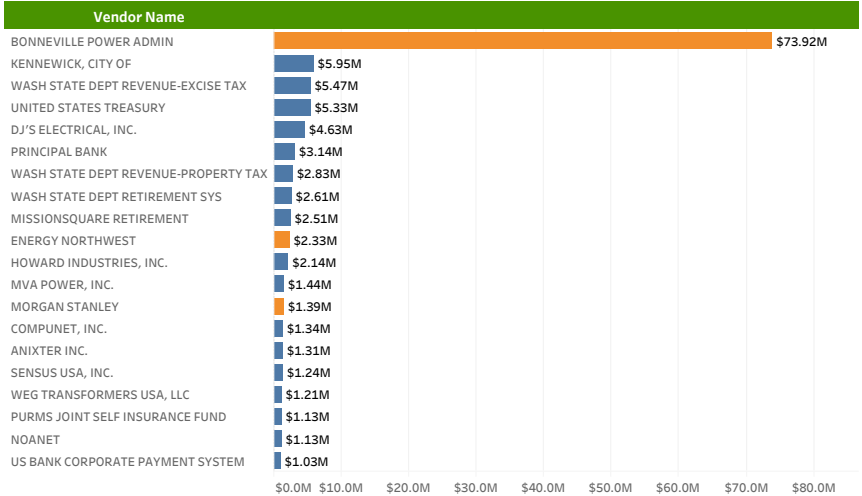
Pension Entry All

Go to the Monthly View

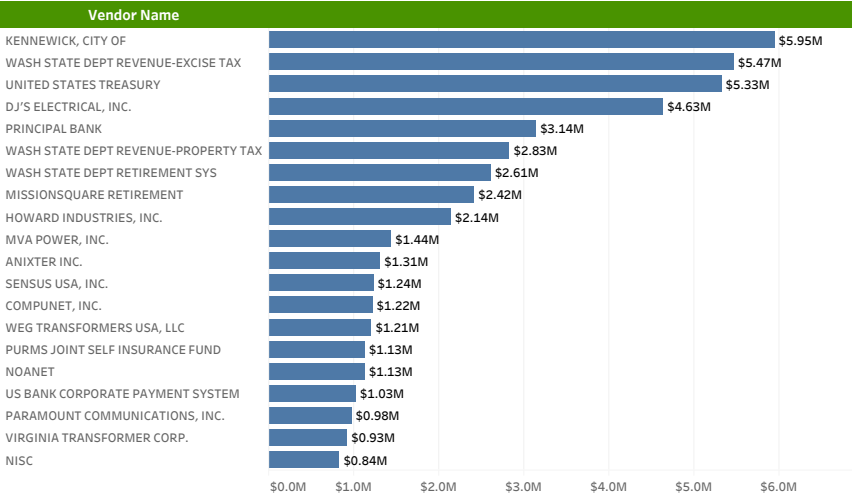
Monthly Multi-Year Graphs

Cumulative Multi-Year Graphs

District Top 20 Vendors - 2025 YTD
(Including Power Transactions)



District Top 20 Vendors - 2025 YTD
(Excluding Power Transactions)

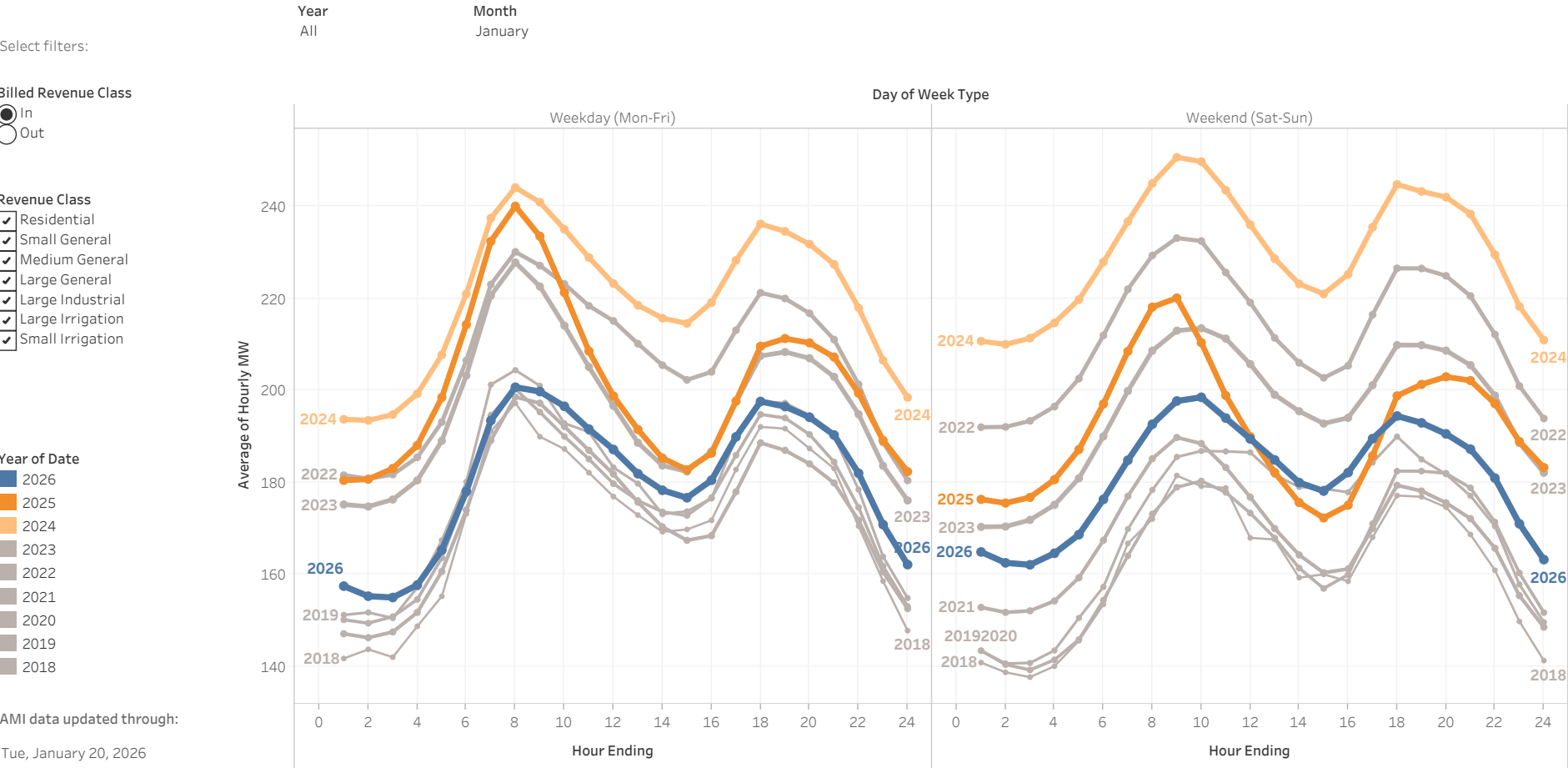


Year
2025

Top N Vendor
20

Revenue Class Hourly Demand

By Year for Revenue Class: **Residential, Small General, Medium General and 4 more** in Month: **January**



Revenue Class Hourly Demand

By Year for Revenue Class: **Residential** in Month: **January**

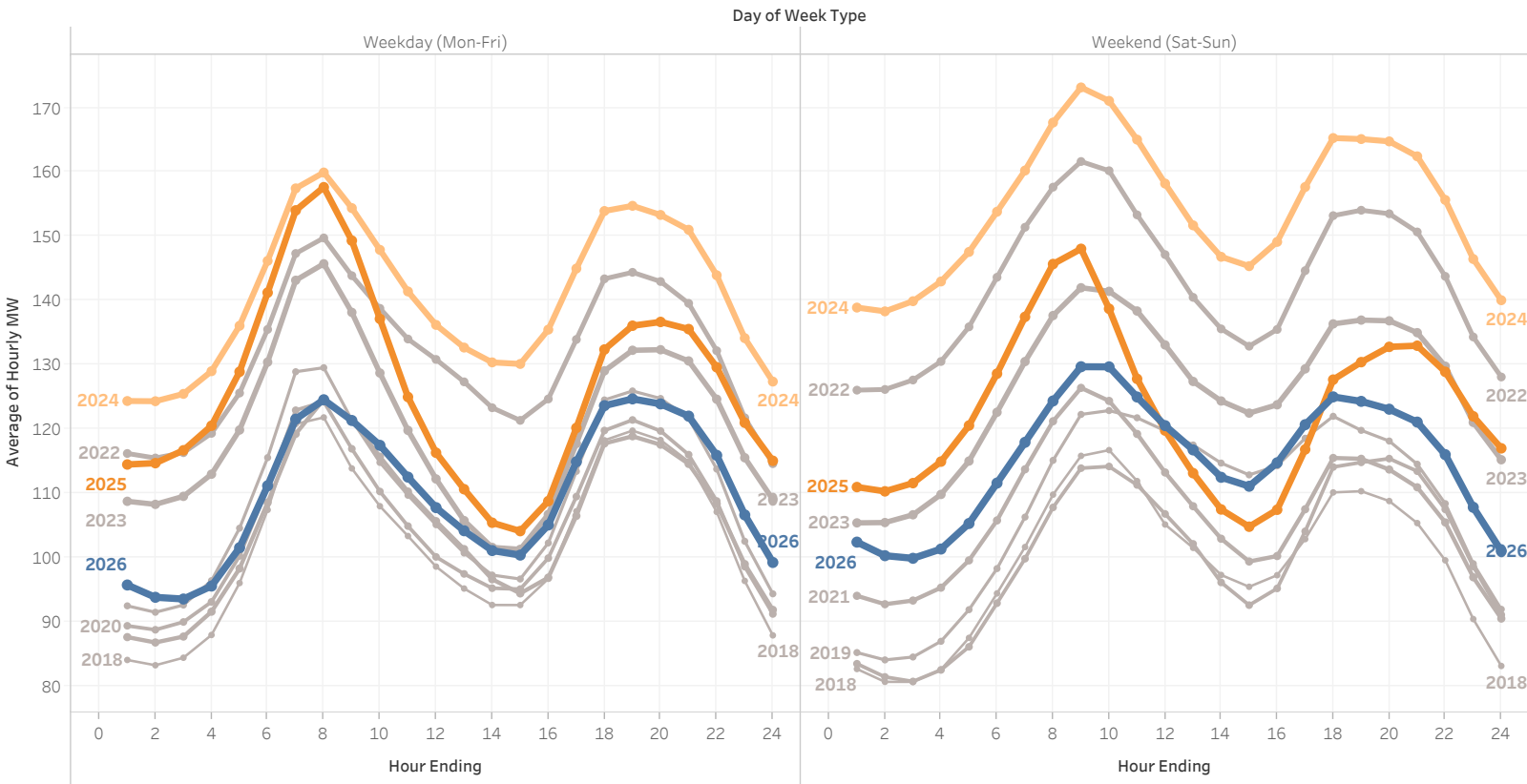
Select filters:
Year: All
Month: January

Billed Revenue Class
☒ In
☐ Out

- Revenue Class
- ☒ Residential
 - ☐ Small General
 - ☐ Medium General
 - ☐ Large General
 - ☐ Large Industrial
 - ☐ Large Irrigation
 - ☐ Small Irrigation

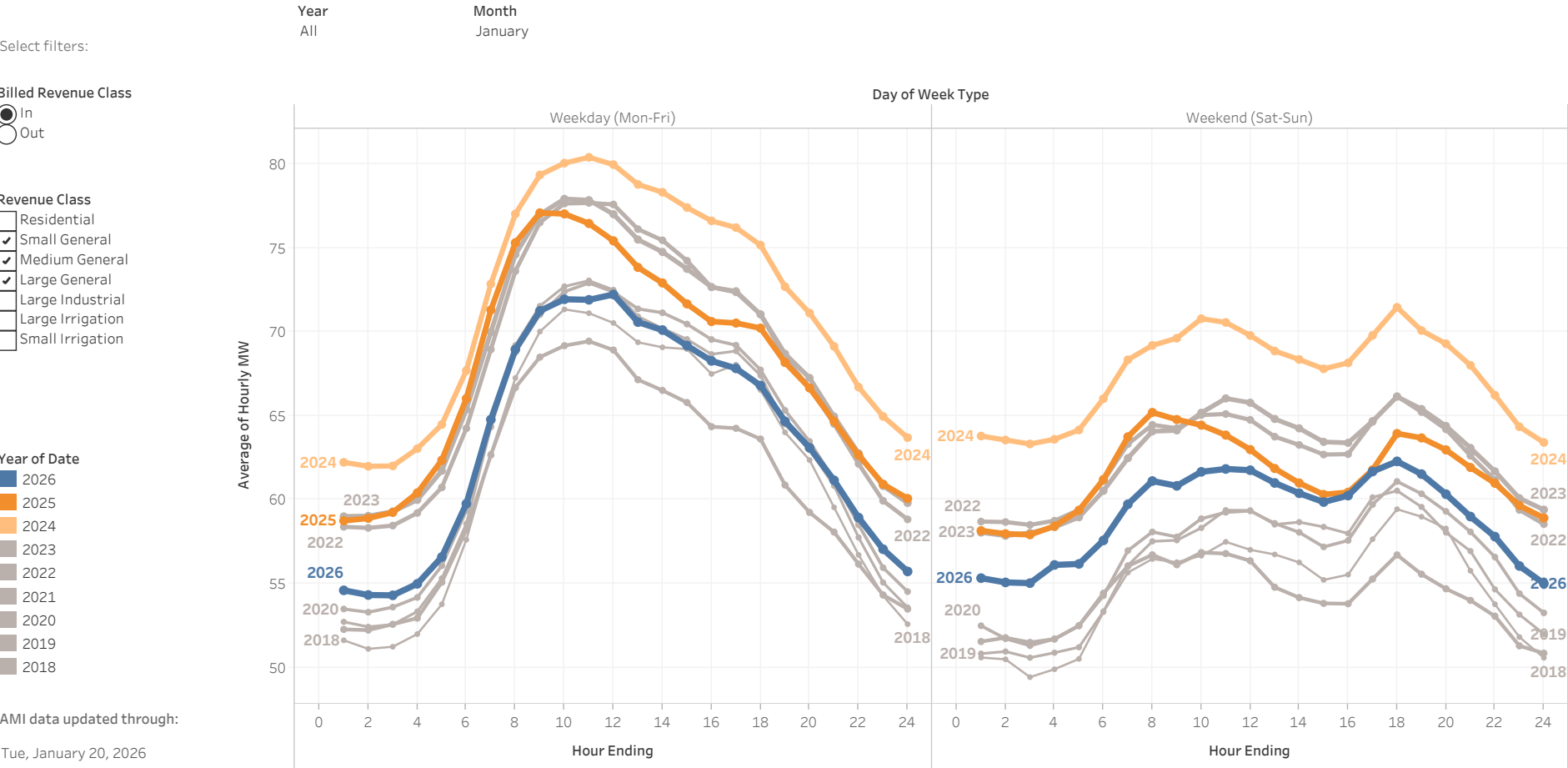
- Year of Date
- 2026
 - 2025
 - 2024
 - 2023
 - 2022
 - 2021
 - 2020
 - 2019
 - 2018

AMI data updated through:
Tue, January 20, 2026



Revenue Class Hourly Demand

By Year for Revenue Class: **Small General, Medium General, Large General** in Month: **January**



Revenue Class Hourly Demand

By Year for Revenue Class: **Large Irrigation** in Month: **January**

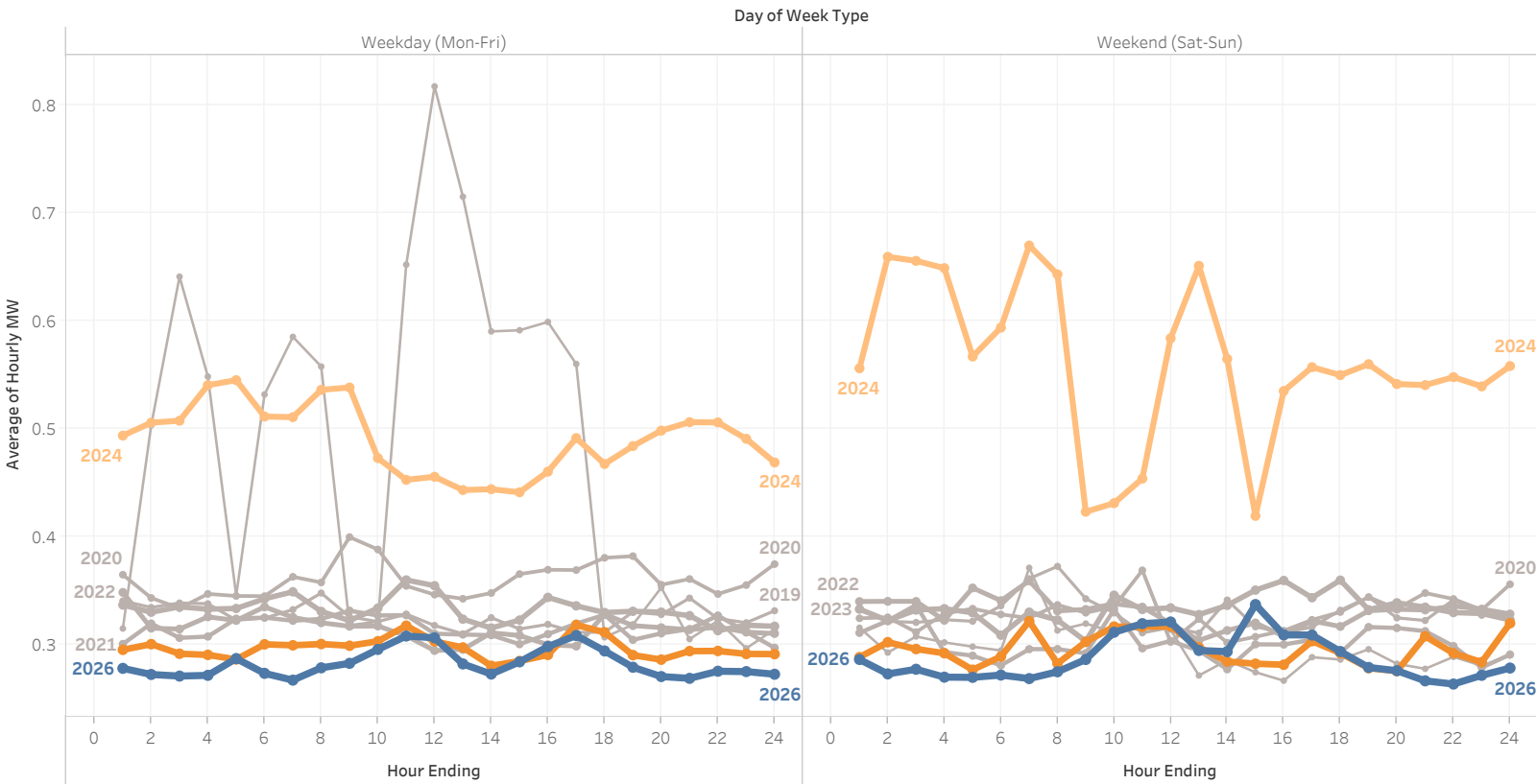
Select filters:
Year: All
Month: January

Billed Revenue Class
☒ In
☐ Out

- Revenue Class
- ☐ Residential
 - ☐ Small General
 - ☐ Medium General
 - ☐ Large General
 - ☐ Large Industrial
 - ☒ Large Irrigation
 - ☐ Small Irrigation

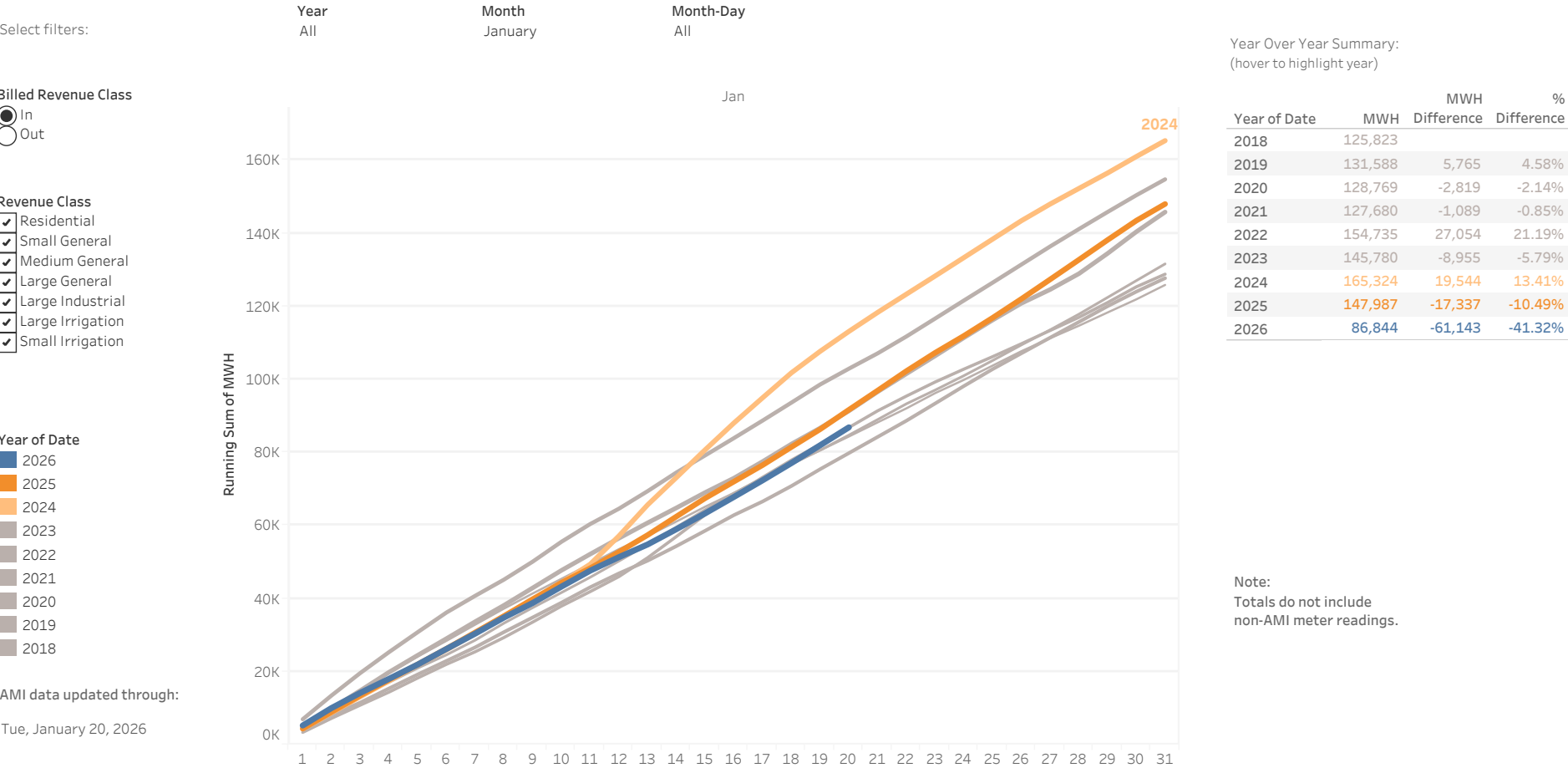
- Year of Date
- ☒ 2026
 - ☐ 2025
 - ☐ 2024
 - ☐ 2023
 - ☐ 2022
 - ☐ 2021
 - ☐ 2020
 - ☐ 2019
 - ☐ 2018

AMI data updated through:
Tue, January 20, 2026



Revenue Class Cumulative Energy

By Year for Revenue Class: Residential, Small General, Medium General and 4 more in Month: January



Jan

Running Sum of MWH

160K

140K

120K

100K

80K

60K

40K

20K

0K

1

2

3

4

5

6

7

8

9

10

11

12

13

14

15

16

17

18

19

20

21

22

23

24

25

26

27

28

29

30

31

Year Over Year Summary:

(hover to highlight year)

Year of Date	MWH	MWH Difference	% Difference
2018	125,823		
2019	131,588	5,765	4.58%
2020	128,769	-2,819	-2.14%
2021	127,680	-1,089	-0.85%
2022	154,735	27,054	21.19%
2023	145,780	-8,955	-5.79%
2024	165,324	19,544	13.41%
2025	147,987	-17,337	-10.49%
2026	86,844	-61,143	-41.32%

Note:

Totals do not include non-AMI meter readings.

Revenue Class Cumulative Energy

By Year for Revenue Class: **Residential** in Month: **January**

Select filters: Year: All Month: January Month-Day: All

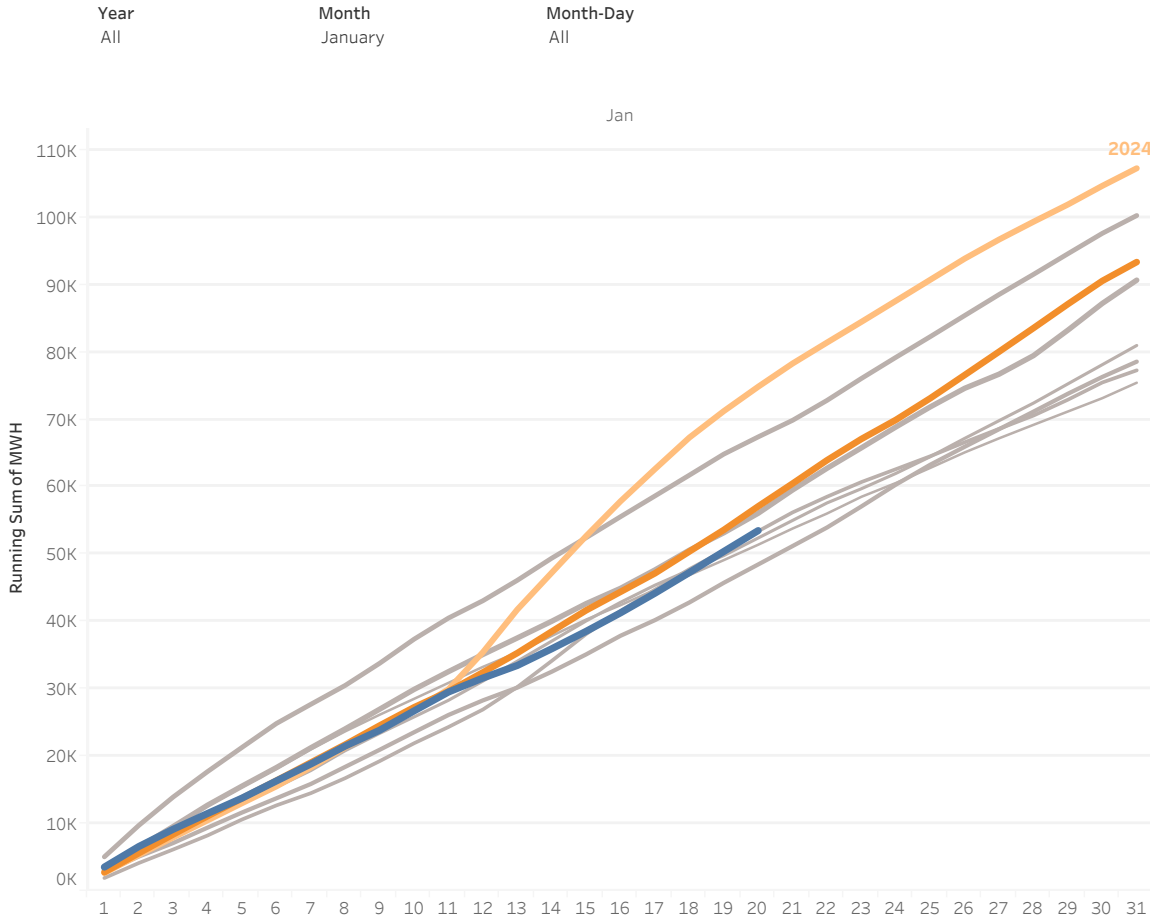
Billed Revenue Class

☒ In
☐ Out

- Revenue Class
- ☒ Residential
 - ☐ Small General
 - ☐ Medium General
 - ☐ Large General
 - ☐ Large Industrial
 - ☐ Large Irrigation
 - ☐ Small Irrigation

- Year of Date
- ☒ 2026
 - ☒ 2025
 - ☒ 2024
 - ☐ 2023
 - ☐ 2022
 - ☐ 2021
 - ☐ 2020
 - ☐ 2019
 - ☐ 2018

AMI data updated through:
Tue, January 20, 2026



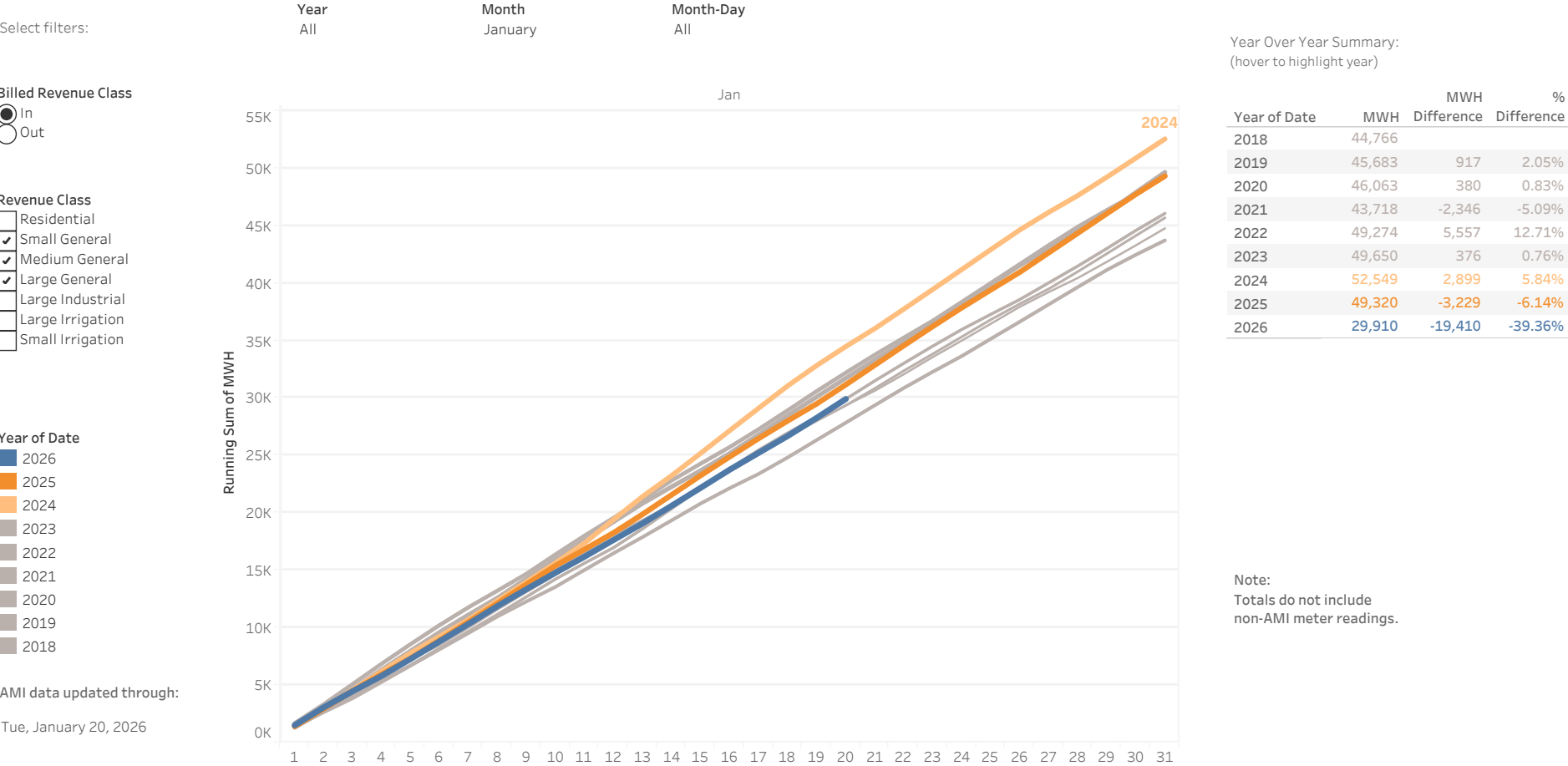
Year Over Year Summary:
(hover to highlight year)

Year of Date	MWH	MWH		%
		Difference	Difference	
2018	75,446			
2019	80,977	5,531	7.33%	
2020	77,287	-3,690	-4.56%	
2021	78,577	1,290	1.67%	
2022	100,267	21,690	27.60%	
2023	90,677	-9,590	-9.56%	
2024	107,279	16,602	18.31%	
2025	93,360	-13,919	-12.97%	
2026	53,496	-39,864	-42.70%	

Note:
Totals do not include
non-AMI meter readings.

Revenue Class Cumulative Energy

By Year for Revenue Class: **Small General, Medium General, Large General** in Month: **January**



Revenue Class Cumulative Energy

By Year for Revenue Class: **Large Irrigation** in Month: **January**

Select filters: Year All Month January Month-Day All

Billed Revenue Class

- In
- Out

Revenue Class

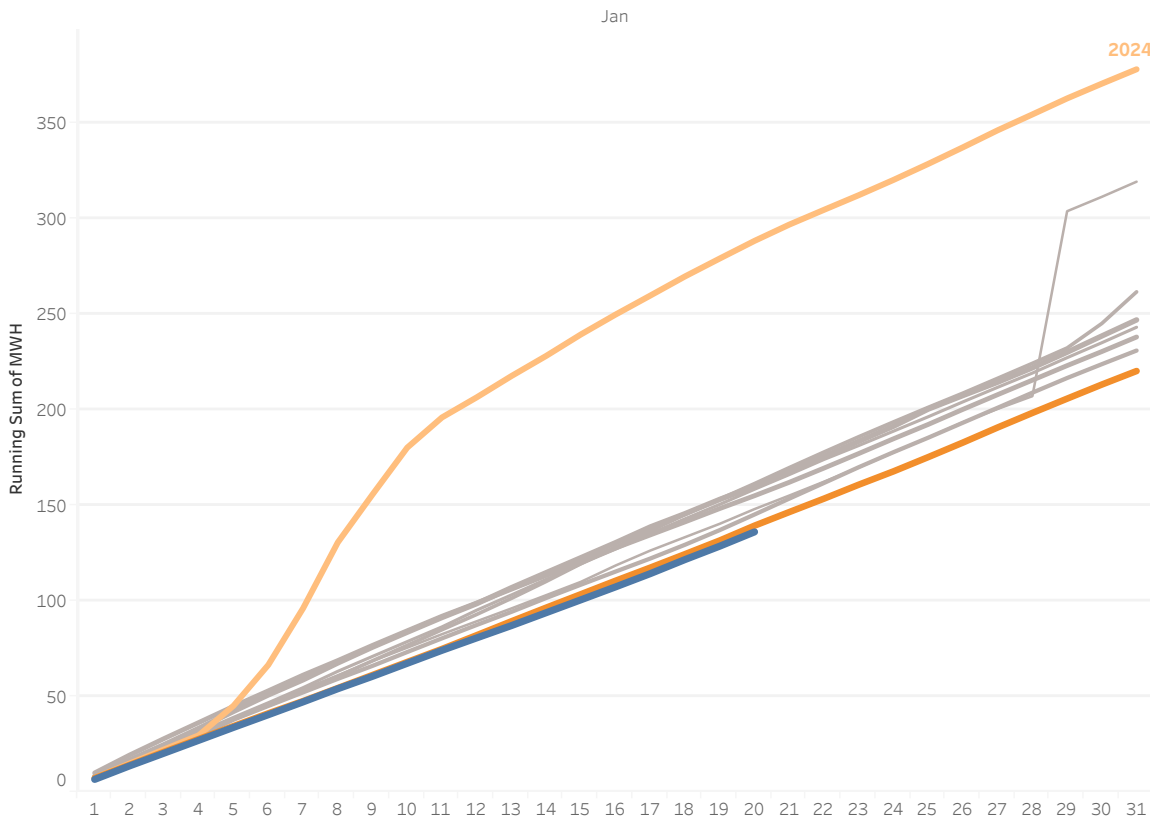
- Residential
- Small General
- Medium General
- Large General
- Large Industrial
- ☒ Large Irrigation
- Small Irrigation

Year of Date

- 2026
- 2025
- 2024
- 2023
- 2022
- 2021
- 2020
- 2019
- 2018

AMI data updated through:

Tue, January 20, 2026



Year Over Year Summary:
(hover to highlight year)

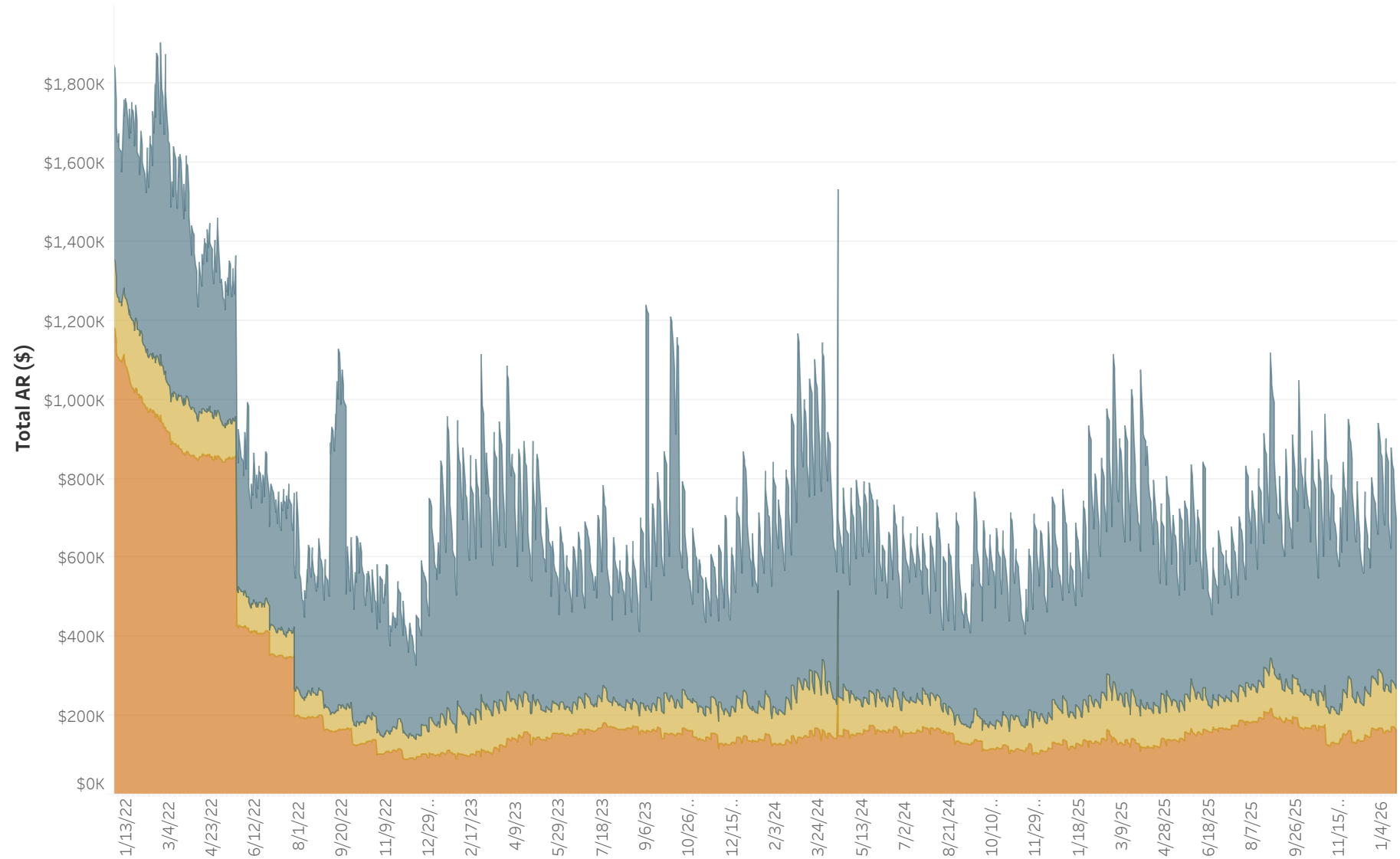
Year of Date	MWH	MWH		%
		Difference	Difference	
2018	319.3			
2019	243.2	-76.2	-23.85%	
2020	261.7	18.5	7.61%	
2021	231.0	-30.7	-11.74%	
2022	238.1	7.1	3.07%	
2023	247.0	9.0	3.76%	
2024	378.1	131.1	53.09%	
2025	220.3	-157.9	-41.75%	
2026	136.1	-84.2	-38.22%	

Note:
Totals do not include
non-AMI meter readings.

No AMI readings for the
pump decks at Spaw,
Paterson #1 & #2 and Prior
#1 Bay 1 & 2.

Past Due AR in Dollars for Selected Revenue Classes:

All
Balance Aging: 30 Days | 60 Days | 90+ Days



Consumer Class Selection:

Regular

Revenue Class Selection:

All

Service Status:

All

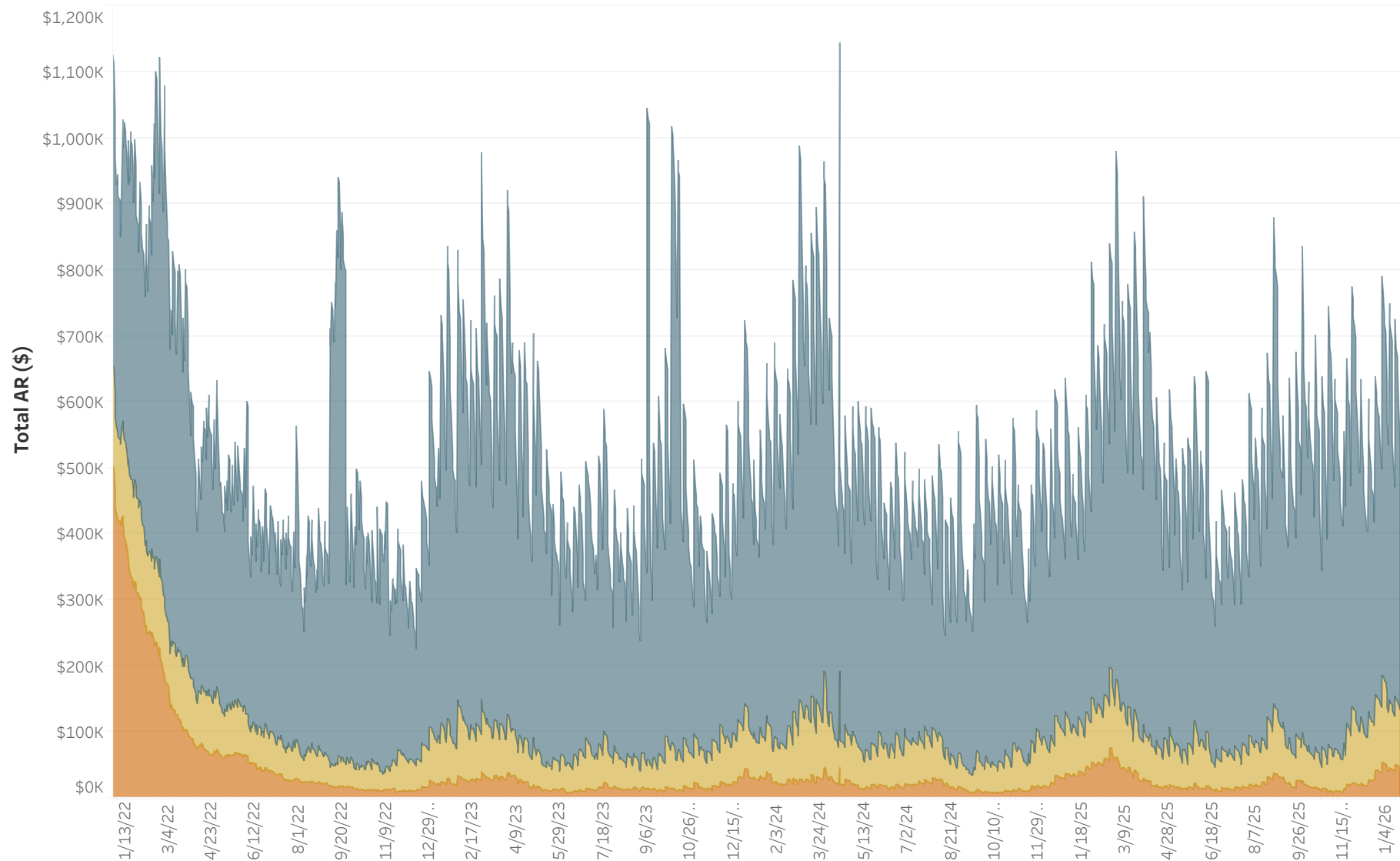
	Accounts	Dollars
30 Days	2,836	\$428,130
60 Days	866	\$102,245
90+ Days	1,185	\$165,587
Past Due	4,887	\$695,963
Total AR	54,875	\$6,243,097

AR data as of 1/21/2026. Data source is AR Balance History Tableau report view.

Past Due AR in Dollars for Selected Revenue Classes:

All

Balance Aging: 30 Days | 60 Days | 90+ Days



Consumer Class Selection:

Regular

Revenue Class Selection:

All

Service Status:

Active

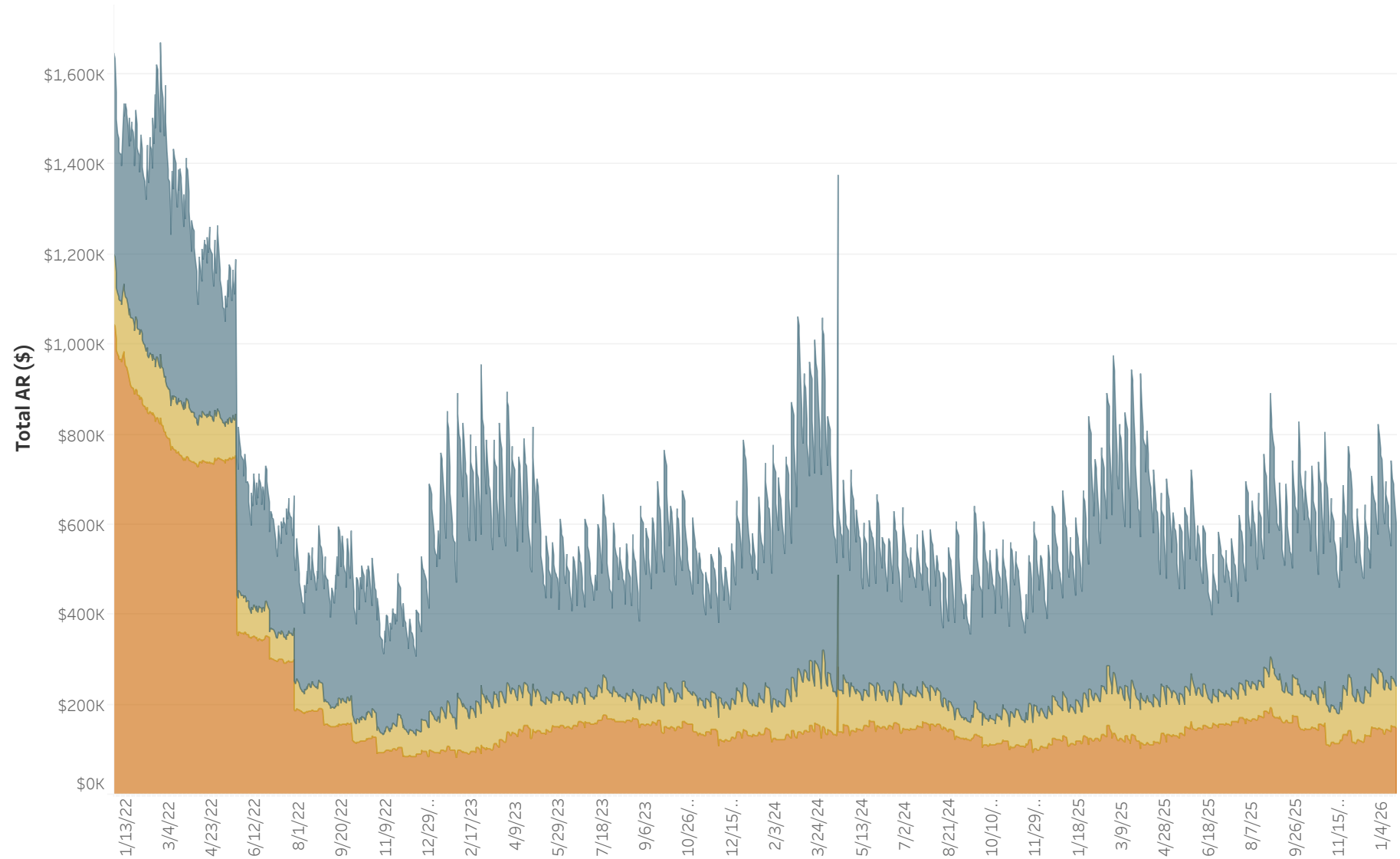
	Accounts	Dollars
30 Days	2,718	\$412,111
60 Days	778	\$87,427
90+ Days	474	\$44,264
Past Due	3,970	\$543,802
Total AR	52,990	\$6,072,967

AR data as of 1/21/2026. Data source is AR Balance History Tableau report view.

Past Due AR in Dollars for Selected Revenue Classes:

Residential

Balance Aging: 30 Days | 60 Days | 90+ Days



Consumer Class Selection:

Regular

Revenue Class Selection:

Residential

Service Status:

All

	Accounts	Dollars
30 Days	2,481	\$361,076
60 Days	783	\$94,059
90+ Days	1,086	\$146,436
Past Due	4,350	\$601,571
Total AR	45,586	\$3,586,669

AR data as of 1/21/2026. Data source is AR Balance History Tableau report view.

Past Due AR in Dollars for Selected Revenue Classes:

Residential

Balance Aging: 30 Days | 60 Days | 90+ Days

Consumer Class Selection:

Regular

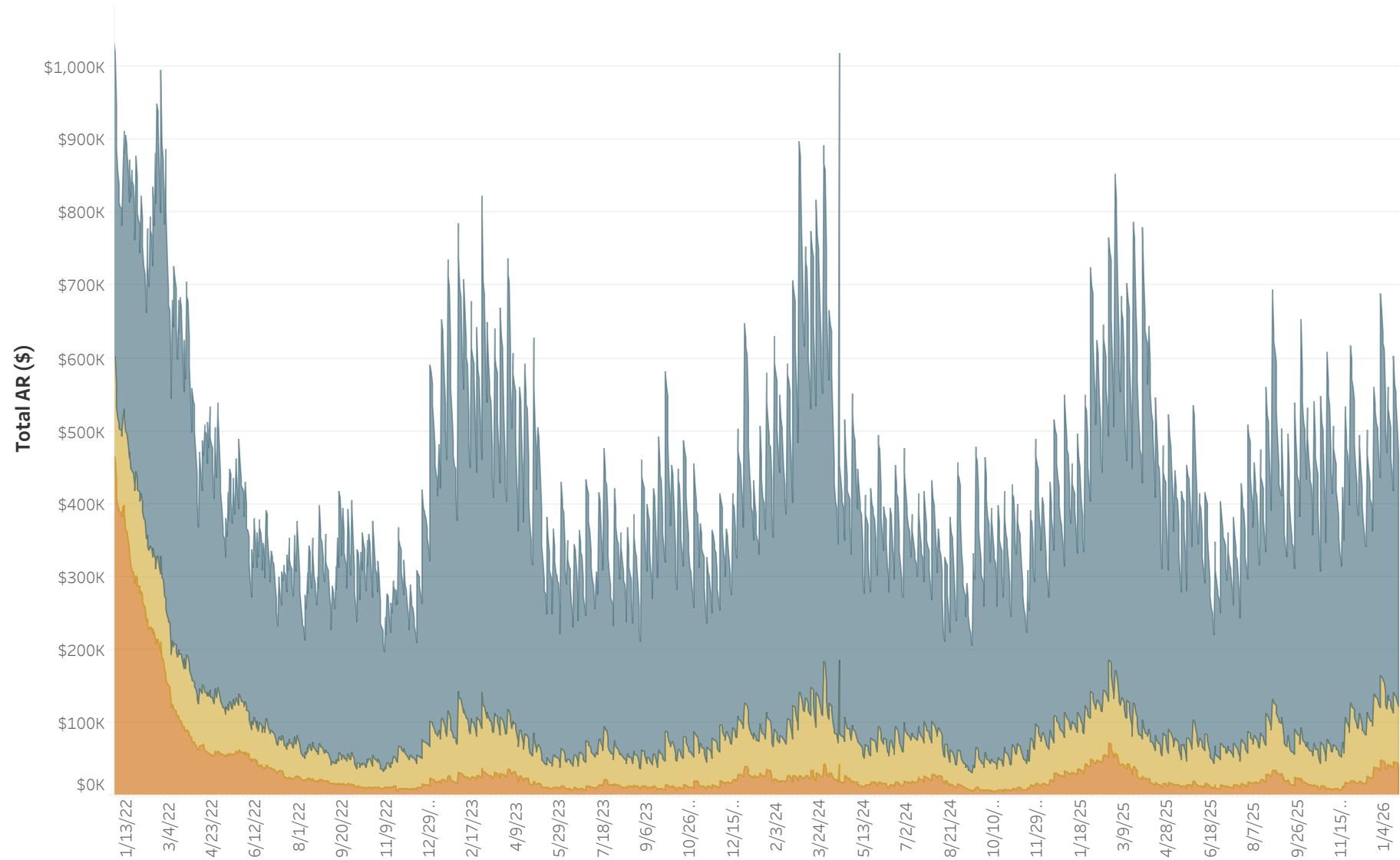
Revenue Class Selection:

Residential

Service Status:

Active

	Accounts	Dollars
30 Days	2,371	\$345,728
60 Days	696	\$79,649
90+ Days	420	\$41,052
Past Due	3,487	\$466,428
Total AR	43,841	\$3,437,187

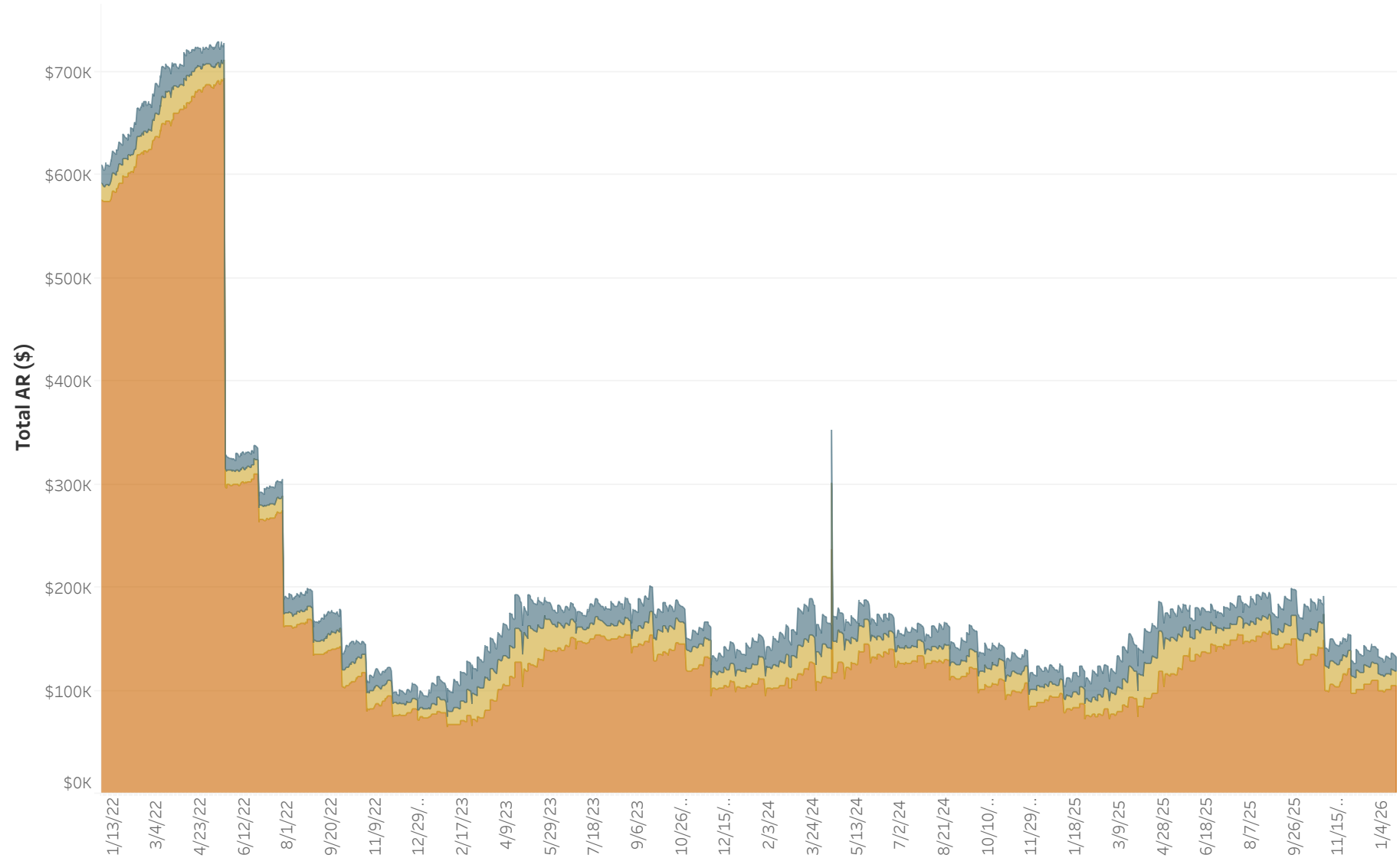


AR data as of 1/21/2026. Data source is AR Balance History Tableau report view.

Past Due AR in Dollars for Selected Revenue Classes:

Residential

Balance Aging: 30 Days | 60 Days | 90+ Days



Consumer Class Selection:

Regular

Revenue Class Selection:

Residential

Service Status:

Inactive

	Accounts	Dollars
30 Days	91	\$13,558
60 Days	82	\$13,990
90+ Days	660	\$104,706
Past Due	833	\$132,254
Total AR	1,413	\$145,806

AR data as of 1/21/2026. Data source is AR Balance History Tableau report view.