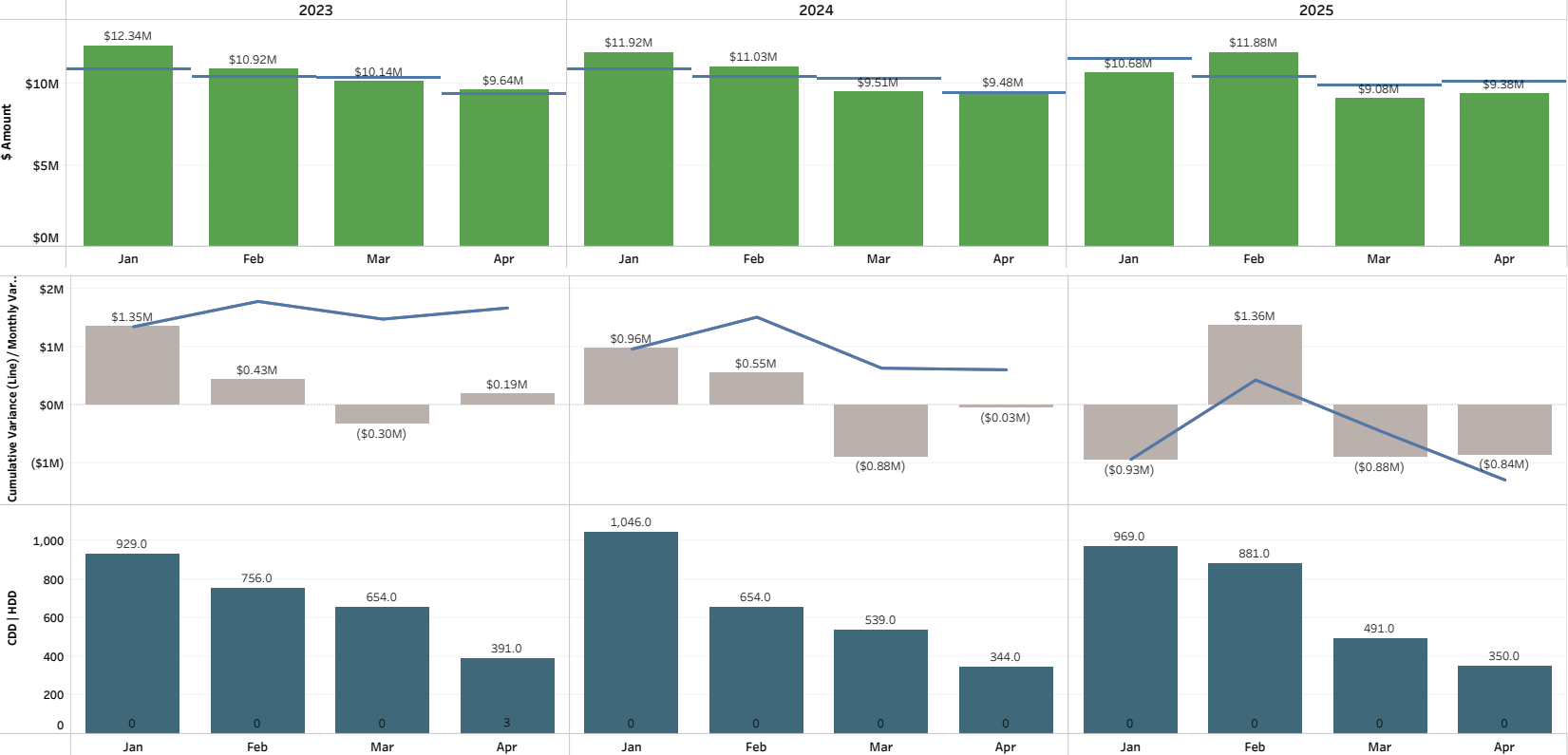


Cumulative Retail Revenue Budget vs Actuals (Original and Amended Budget): [All](#)



Rate Class  
All

Filter Date Year  
Multiple values

Filter Date Month  
Multiple values

Legend

Budget

Amended Budget

Actual

Cumulative Variance Original

Cumulative Variance Amended

Month Over / (Under)

Heating Degree Days

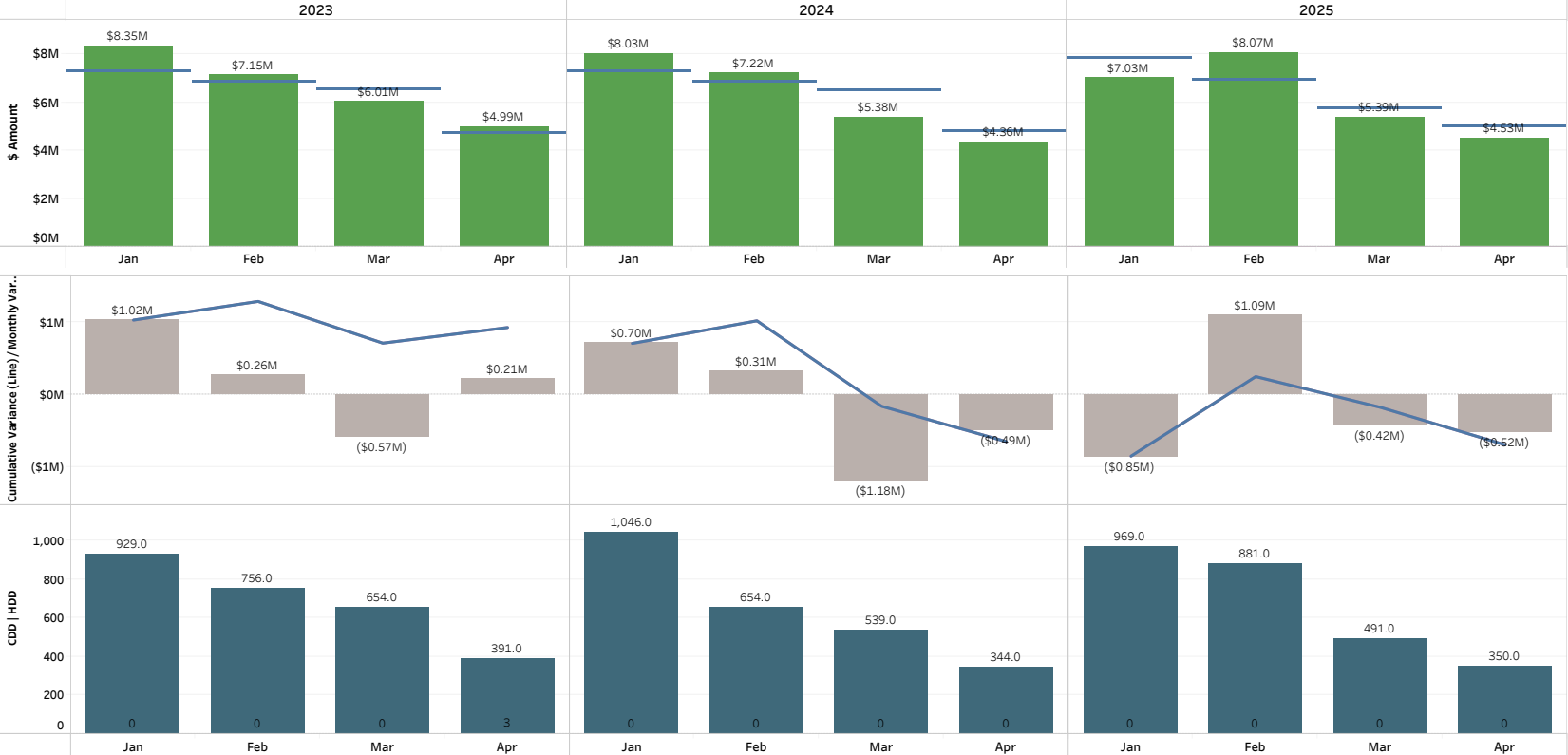
Cooling Degree Days

**Note:** Cumulative budget amendment changes are reflected in the month of September.

**Cooling Degree Days (CDD)** are a measure of how hot the temperature was on a given day or during a period of days. CDD's quantify the demand for energy needed to cool buildings. The higher the CDD's, the hotter the region is.

**Heating Degree Days (HDD)** are a measure of how cold the temperature was on a given day or during a period of days. HDD's quantify the demand for energy needed to heat buildings. The higher the HDD's, the colder the region is.

Cumulative Retail Revenue Budget vs Actuals (Original and Amended Budget): Residential Sales



Rate Class  
Residential Sales

Filter Date Year  
Multiple values

Filter Date Month  
Multiple values

Legend

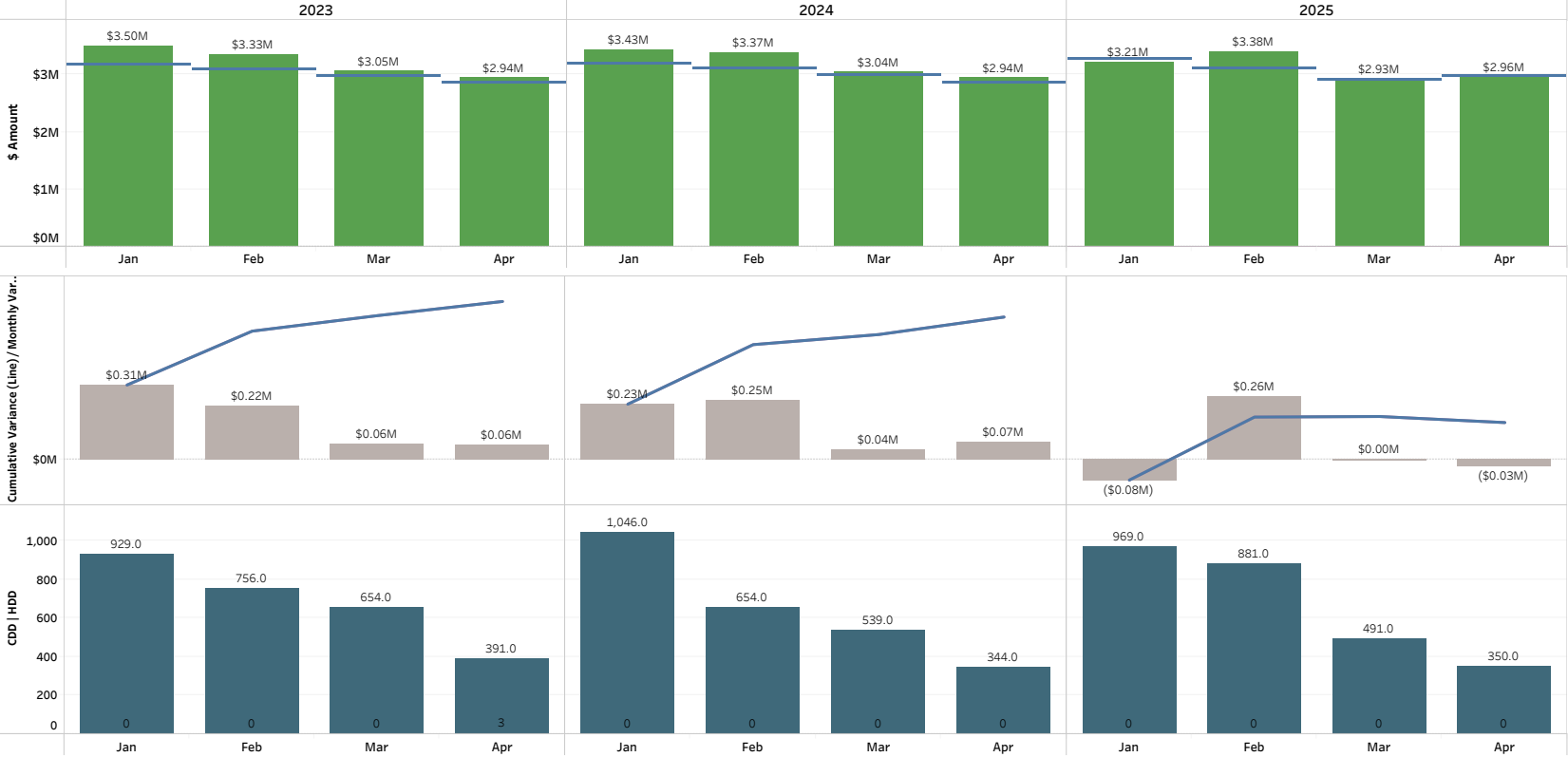
- Budget
- Amended Budget
- Actual
- Cumulative Variance Original
- Cumulative Variance Amended
- Month Over / (Under)
- Heating Degree Days
- Cooling Degree Days

**Note:** Cumulative budget amendment changes are reflected in the month of September.

**Cooling Degree Days (CDD)** are a measure of how hot the temperature was on a given day or during a period of days. CDD's quantify the demand for energy needed to cool buildings. The higher the CDD's, the hotter the region is.

**Heating Degree Days (HDD)** are a measure of how cold the temperature was on a given day or during a period of days. HDD's quantify the demand for energy needed to heat buildings. The higher the HDD's, the colder the region is.

Cumulative Retail Revenue Budget vs Actuals (Original and Amended Budget): Large General Service Sales, Medium General Service Sales, Small General Service Sales



**Rate Class**  
Multiple values

**Filter Date Year**  
Multiple values

**Filter Date Month**  
Multiple values

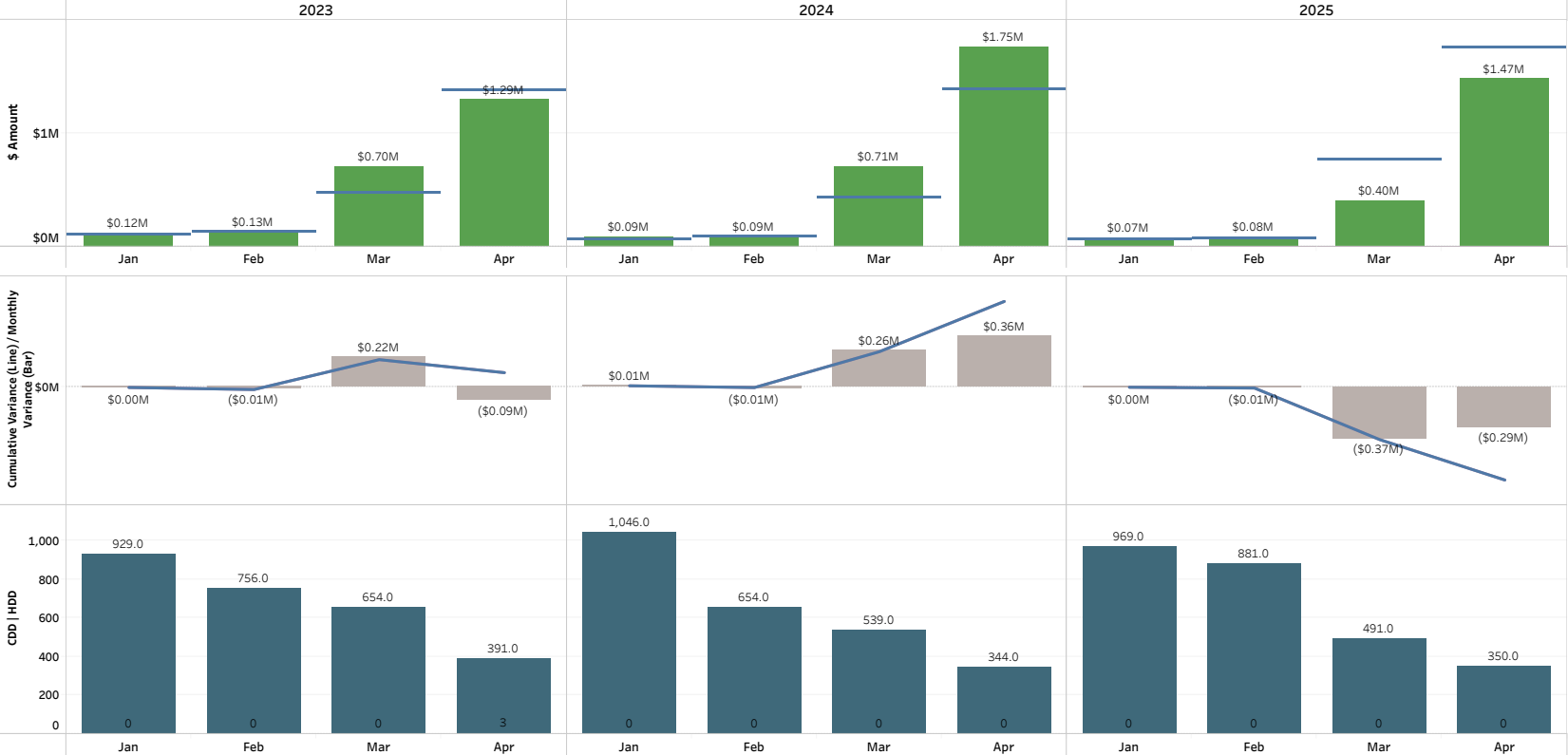
**Legend**  
Budget  
Amended Budget  
Actual  
Cumulative Variance Original  
Cumulative Variance Amended  
Month Over / (Under)  
Heating Degree Days  
Cooling Degree Days

**Note:** Cumulative budget amendment changes are reflected in the month of September.

**Cooling Degree Days (CDD)** are a measure of how hot the temperature was on a given day or during a period of days. CDD's quantify the demand for energy needed to cool buildings. The higher the CDD's, the hotter the region is.

**Heating Degree Days (HDD)** are a measure of how cold the temperature was on a given day or during a period of days. HDD's quantify the demand for energy needed to heat buildings. The higher the HDD's, the colder the region is.

Cumulative Retail Revenue Budget vs Actuals (Original and Amended Budget): Large Irrigation Sales



**Rate Class**  
Large Irrigation Sales

**Filter Date Year**  
Multiple values

**Filter Date Month**  
Multiple values

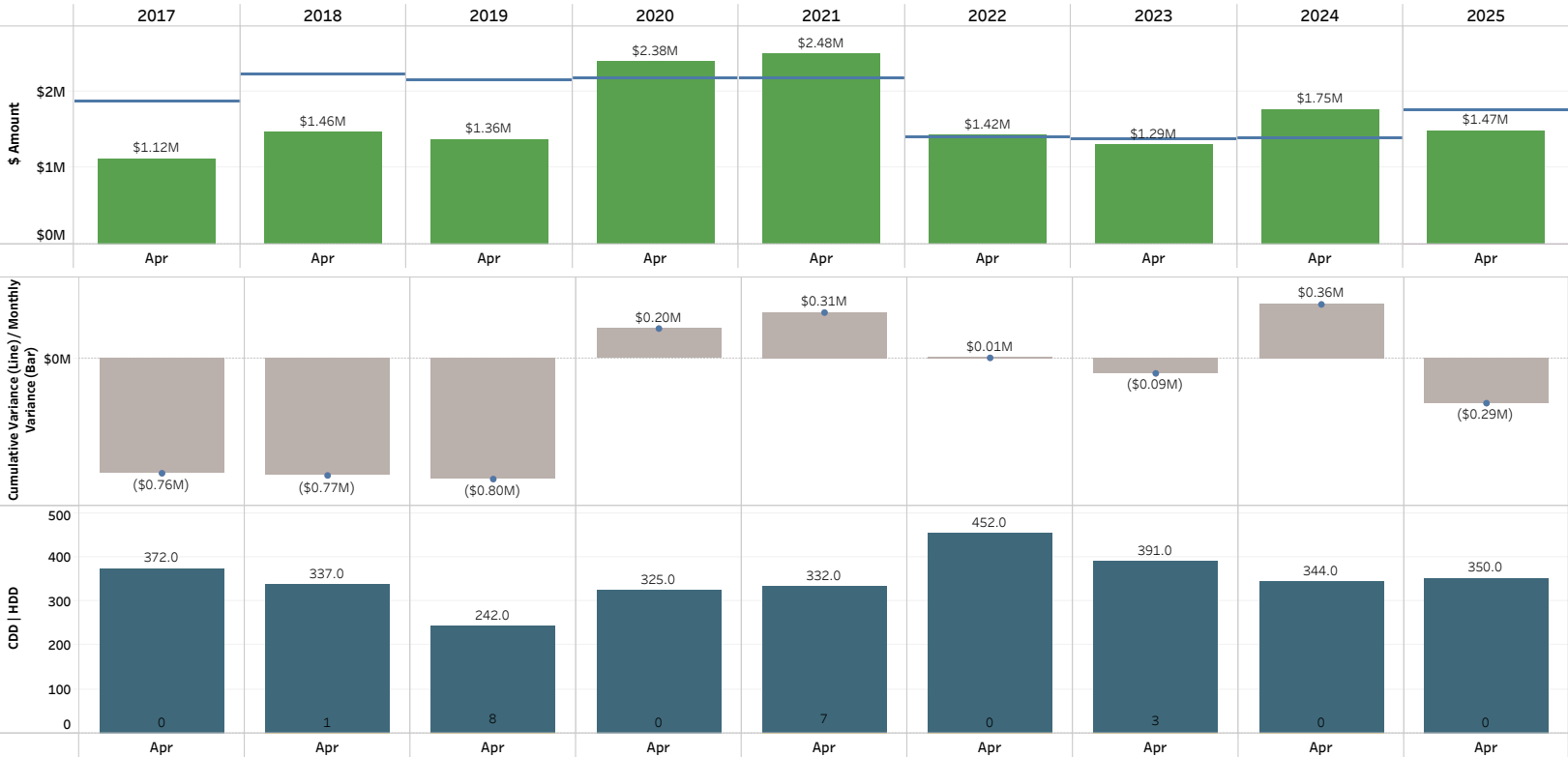
**Legend**  
Budget  
Amended Budget  
Actual  
Cumulative Variance Original  
Cumulative Variance Amended  
Month Over / (Under)  
Heating Degree Days  
Cooling Degree Days

**Note:** Cumulative budget amendment changes are reflected in the month of September.

**Cooling Degree Days (CDD)** are a measure of how hot the temperature was on a given day or during a period of days. CDD's quantify the demand for energy needed to cool buildings. The higher the CDD's, the hotter the region is.

**Heating Degree Days (HDD)** are a measure of how cold the temperature was on a given day or during a period of days. HDD's quantify the demand for energy needed to heat buildings. The higher the HDD's, the colder the region is.

Cumulative Retail Revenue Budget vs Actuals (Original and Amended Budget): [Large Irrigation Sales](#)



Rate Class  
Large Irrigation Sales

Filter Date Year  
All

Filter Date Month  
Apr

Legend

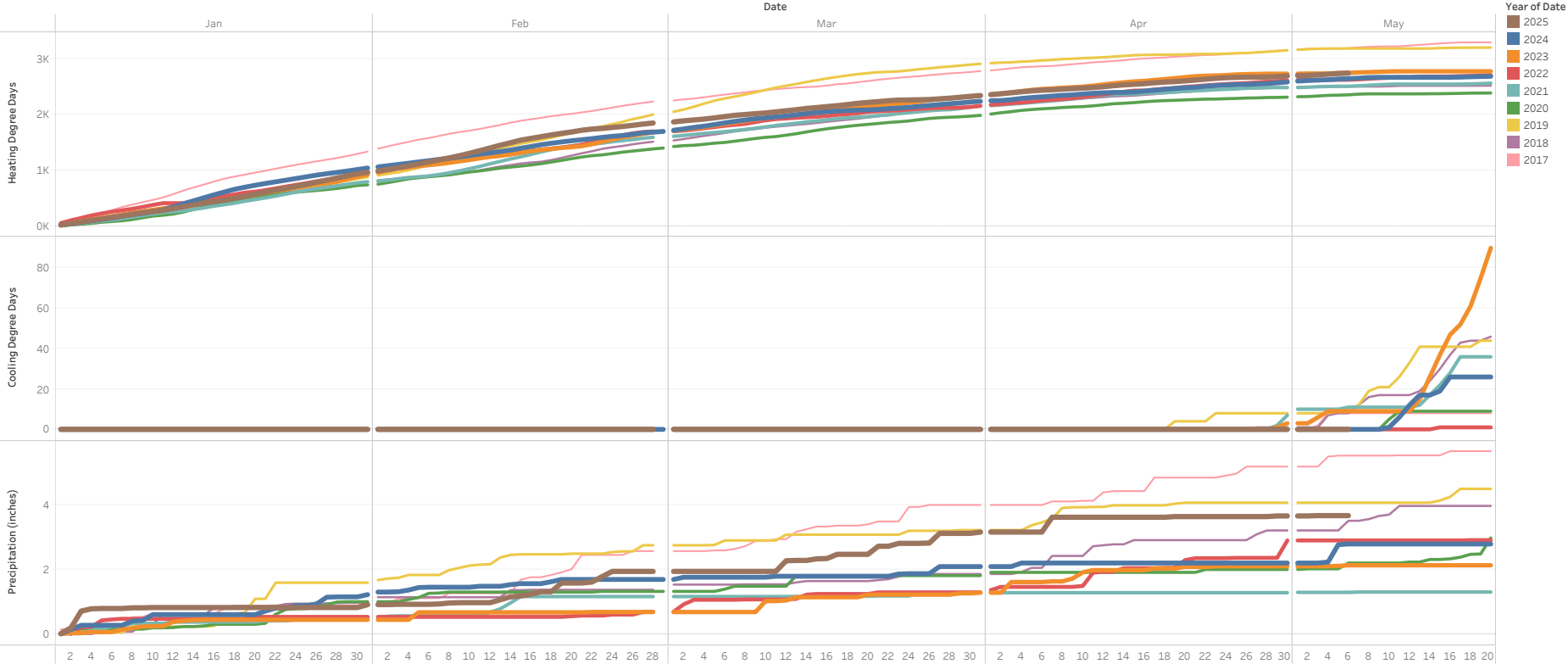
- Budget
- Amended Budget
- Actual
- Cumulative Variance Original
- Cumulative Variance Amended
- Month Over / (Under)
- Heating Degree Days
- Cooling Degree Days

Note: Cumulative budget amendment changes are reflected in the month of September.

**Cooling Degree Days (CDD)** are a measure of how hot the temperature was on a given day or during a period of days. CDD's quantify the demand for energy needed to cool buildings. The higher the CDD's, the hotter the region is.

**Heating Degree Days (HDD)** are a measure of how cold the temperature was on a given day or during a period of days. HDD's quantify the demand for energy needed to heat buildings. The higher the HDD's, the colder the region is.

Cumulative Daily Weather by Year

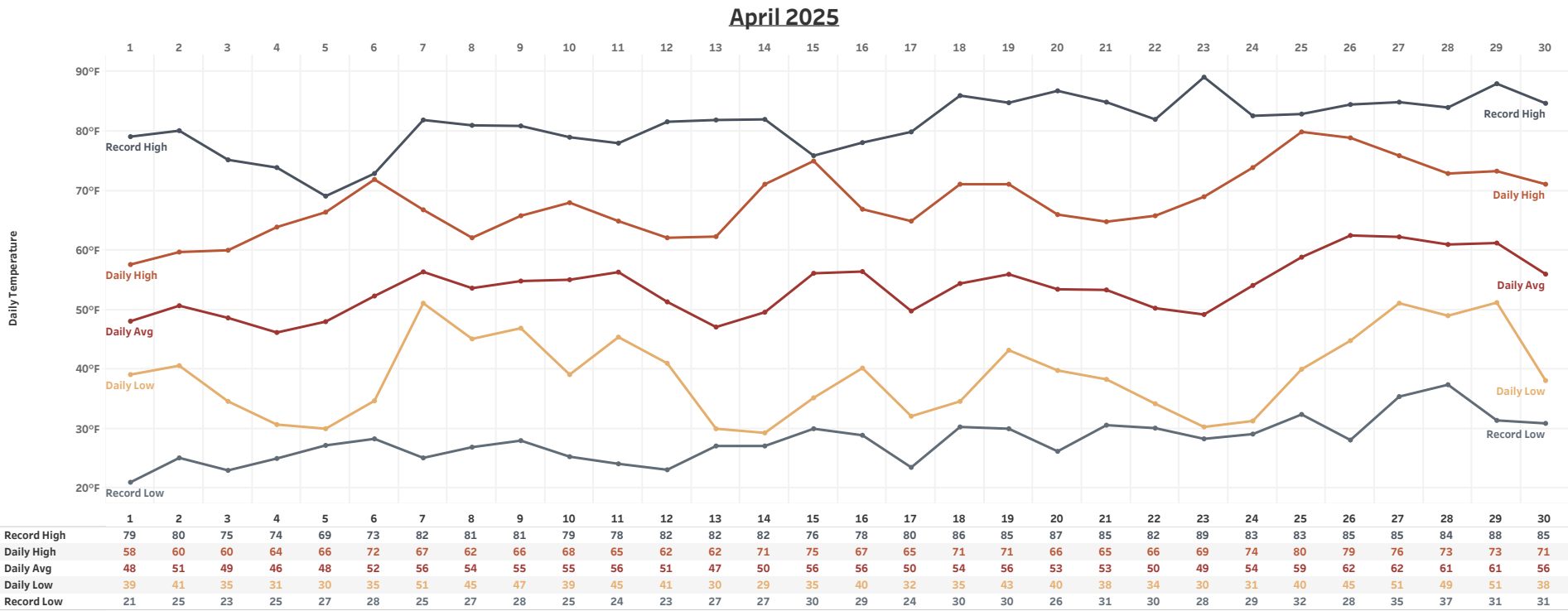


Daily weather at Tri-Cities Airport (USW00024163), sourced from NOAA website, <https://www.ncdc.noaa.gov/cdo-web/search?datasetid=GHCND>

# Daily Temperature by Month

Daily temperatures at Tri-Cities Airport (KPSC) with records since January 2000.

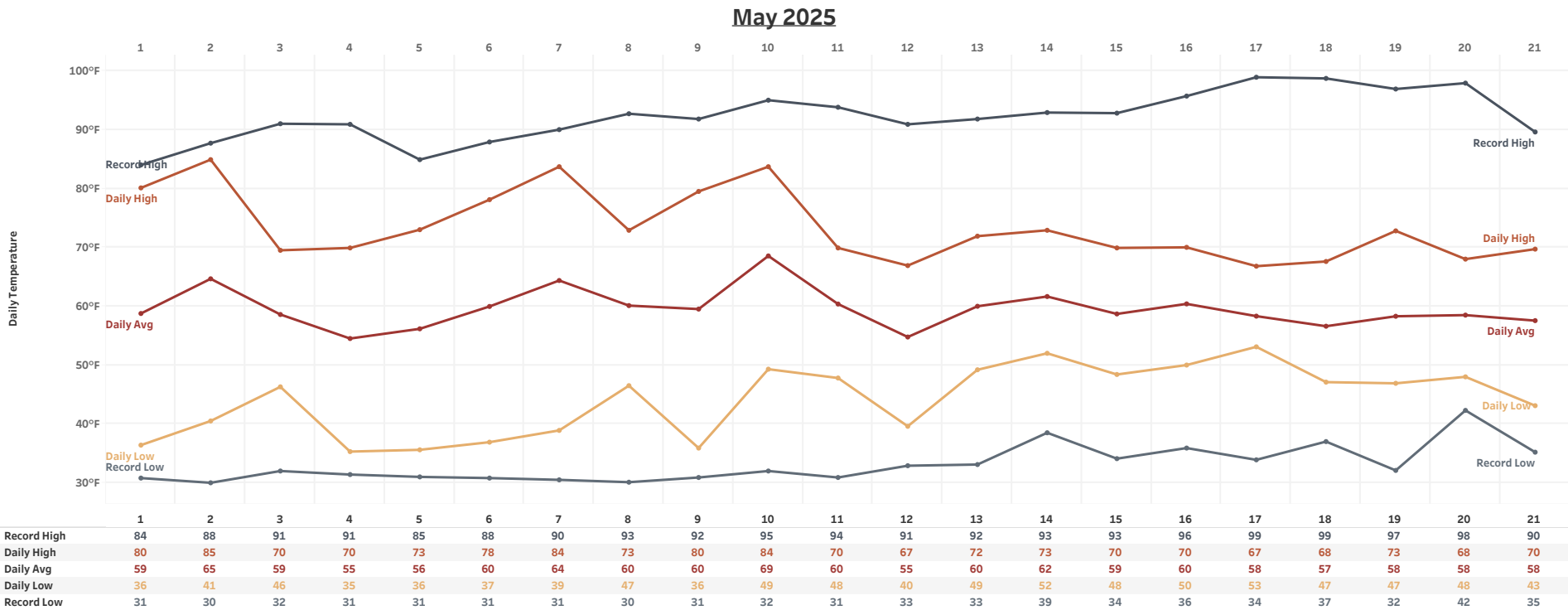
Month, Year  
April 2025



# Daily Temperature by Month

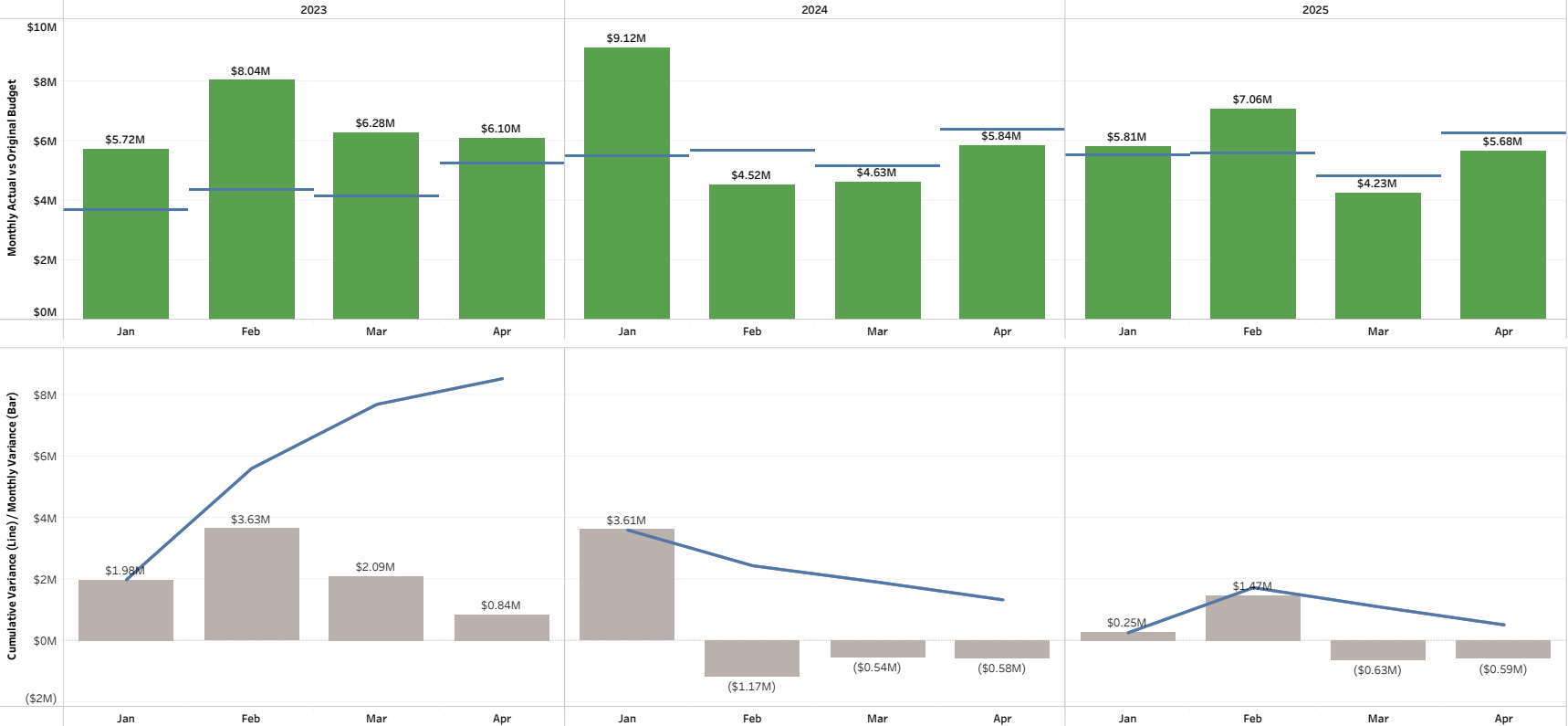
Daily temperatures at Tri-Cities Airport (KPSC) with records since January 2000.

Month, Year  
May 2025





Cumulative Net Power Cost Budget vs Actuals (Original and Amended Budget): All



Filter Date Year  
Multiple values

Filter Date Month  
Multiple values

Account Sub Category  
All

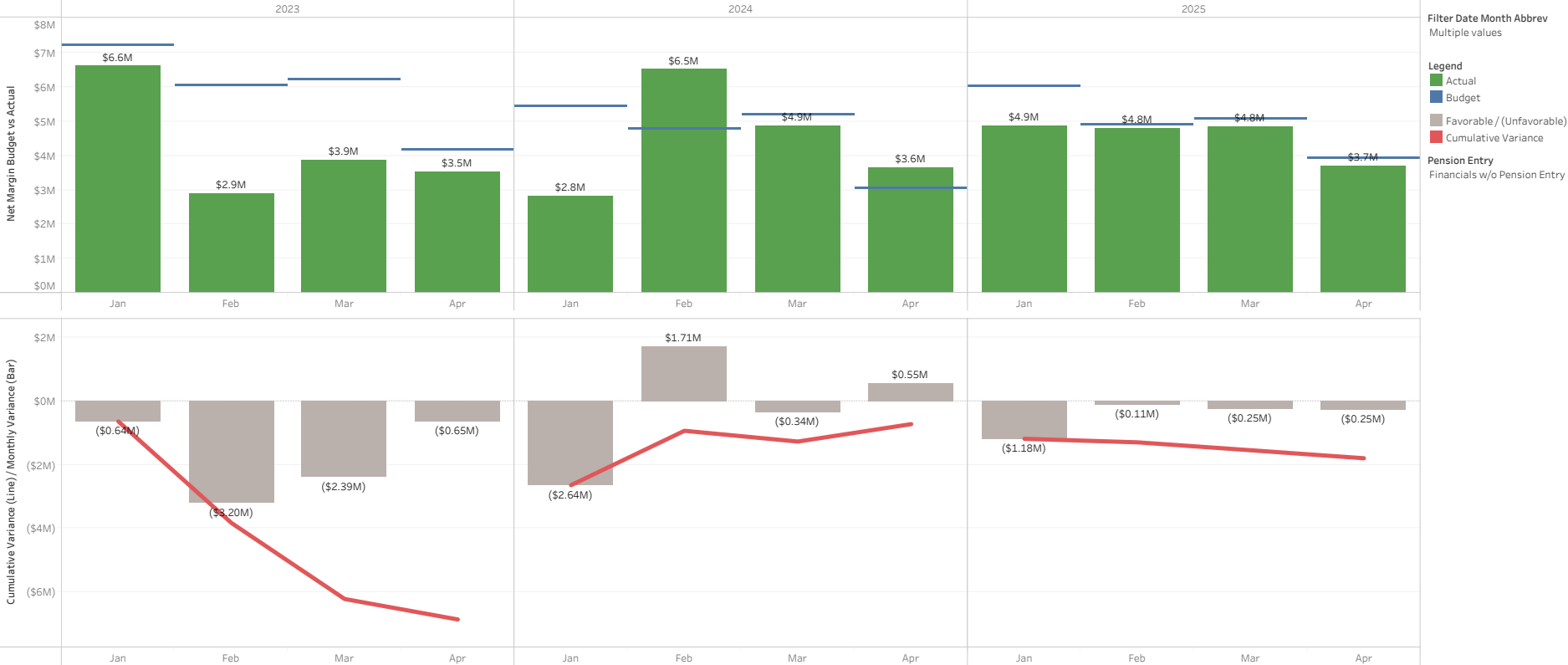
Pension Entry  
Financials w/o Pension Entry

Legend

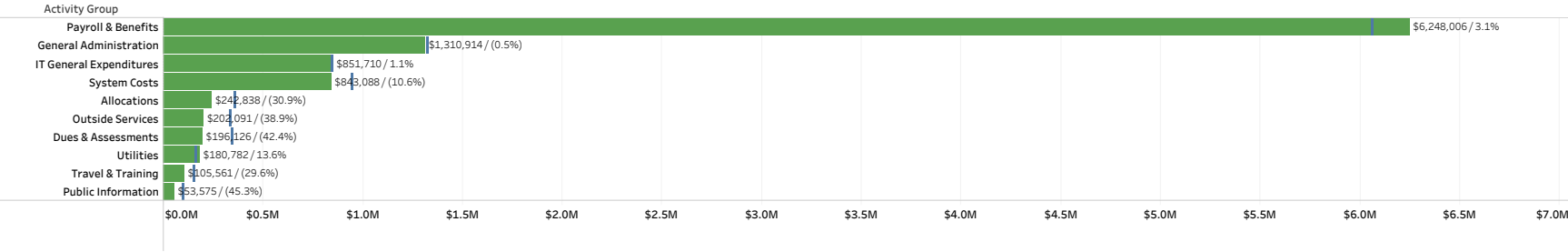
- Original Budget
- Amended Budget
- Actual Amount
- Cumulative Variance Ori..
- Cumulative Variance Am..
- Month Over / (Under)

Note: Cumulative budget amendment changes are reflected in the month of September.

Cumulative Net Margin Original Budget vs Actuals



2025 Top 10 YTD O&M Actuals & Original Budget by Activity Group Through April



Enter Year  
2025

Select Month  
April

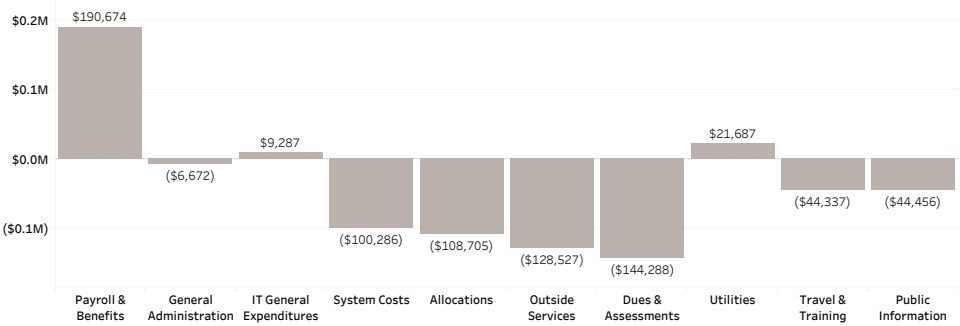
Top N - Activity Category  
10

Dept #  
All

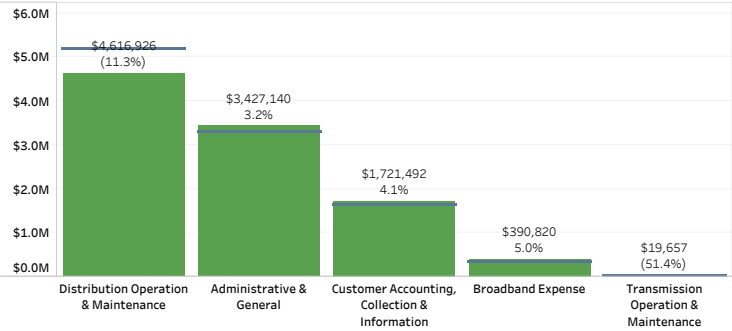
Budget Version  
☒ Actuals  
☐ Amended Budget  
☒ Original Budget

Pension Entry  
Financials w/o Pension En..

2025 Top 10, YTD O&M Budget Variance by Activity Group Through April



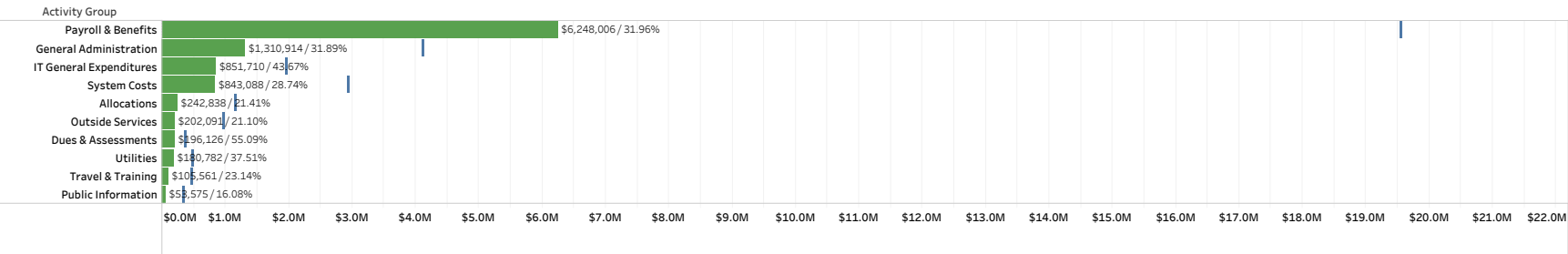
2025 YTD O&M Actuals & Original Budget by Financial Statement Group Through April



Legend  
☒ YTD Budget  
☒ YTD Actuals  
☐ YTD Over/(Under)

2025 Top 10 YTD O&M Actuals & Original Budget by Activity Group Through April

% of Year: 33.33%



Enter Year  
2025

Select Month  
April

Top N - Activity Category  
10

Dept #  
All

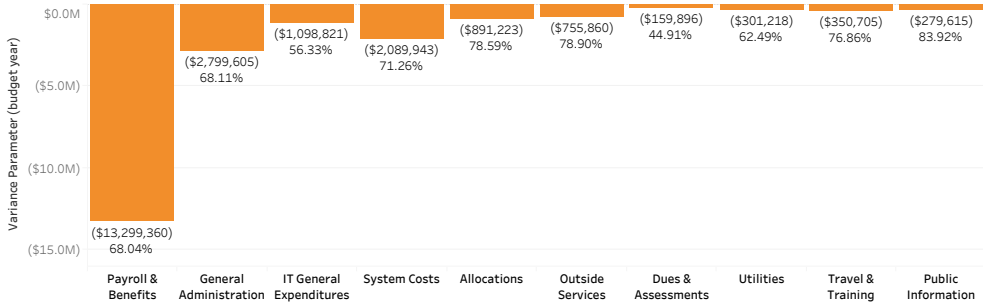
Budget Version  
☒ Actuals  
☐ Amended Budget  
☒ Original Budget

Pension Entry  
Financials w/o Pension Ent..

Legend  
Budget  
YTD Actuals  
Remaining Budget

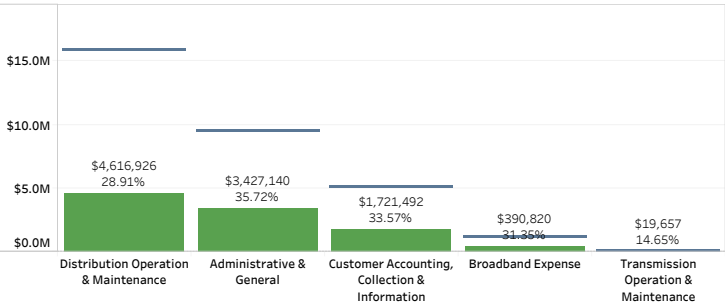
2025 Top 10, Remaining Budget Amount by Activity Group through April

% of Year Remaining: 66.67%



2025 YTD O&M Actuals & Original Budget by Financial Statement Group Through April

% of Year: 33.33%



Capital Drill Down with 2025 Actuals & Original Budget

% of Year: 33.3%

Category	Group	Actual Amount	Budget Amount	% of Budget
Transmission	Transmission Projects	\$495,579	\$953,314	51.98%
Distribution	Capacity & Reliability	\$2,868,420	\$9,125,242	31.43%
	Customer Growth	\$4,008,493	\$9,331,054	42.96%
	General Plant	\$253,830	\$935,496	27.13%
	Other	\$103,934	\$170,634	60.91%
	Repair & Replace	\$595,860	\$3,718,451	16.02%
Broadband	Broadband	\$176,000	\$1,417,038	12.42%
General Plant	General Plant	\$158,952	\$1,333,792	11.92%
Information Technology	Information Technology	\$649,795	\$3,968,413	16.37%
Other	Other	\$0		
Grand Total		\$9,310,862	\$30,953,434	30.08%

Select Year  
2025

Select Month(s)

- ☒ Jan
- ☒ Feb
- ☒ Mar
- ☒ Apr
- ☐ May
- ☐ Jun
- ☐ Jul
- ☐ Aug
- ☐ Sep
- ☐ Oct
- ☐ Nov
- ☐ Dec
- ☒ Budget

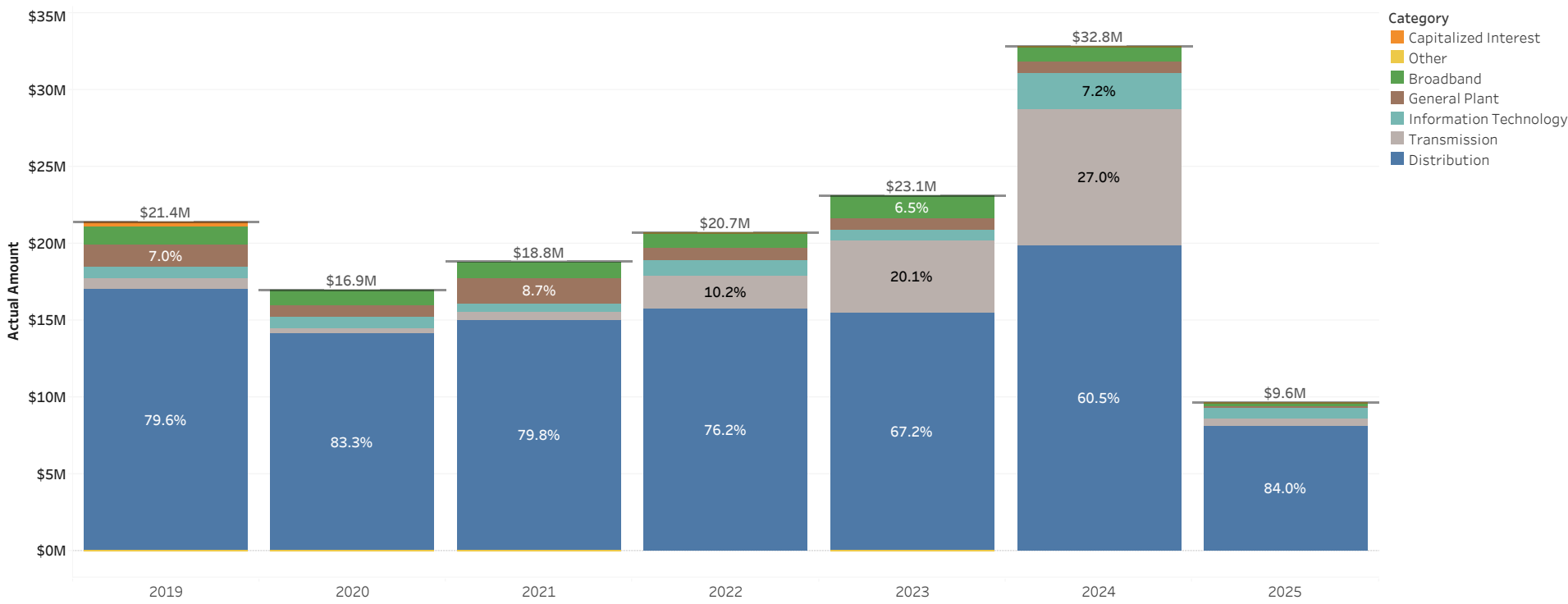
Budget Version

- ☒ Actuals
- ☐ Amended Budget
- ☒ Original Budget

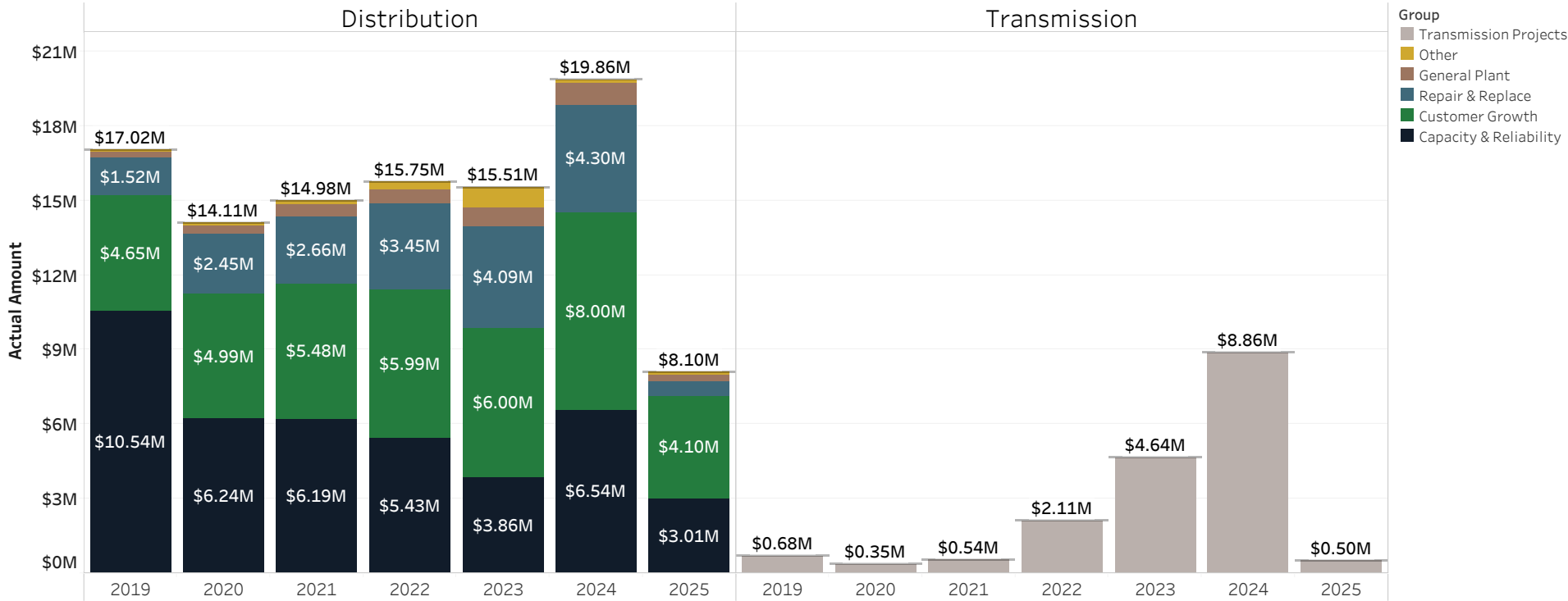
Pension Entry

Financials w/o Pension Entry

# Gross Capital Expenditures by Category (Actuals)

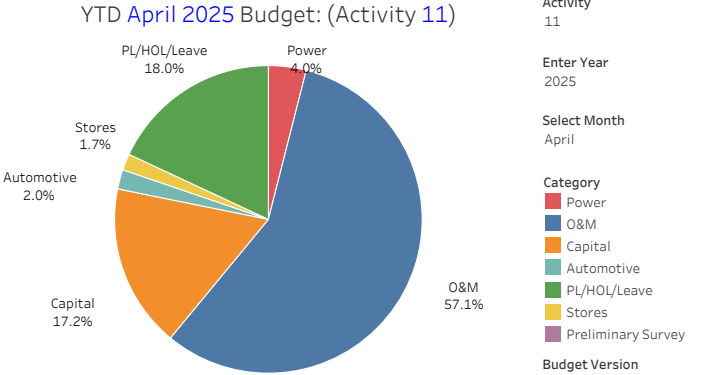


# Gross Capital Expenditures by Group (Actuals)

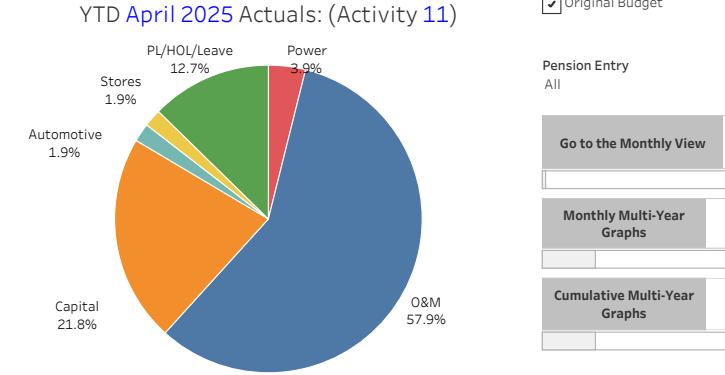
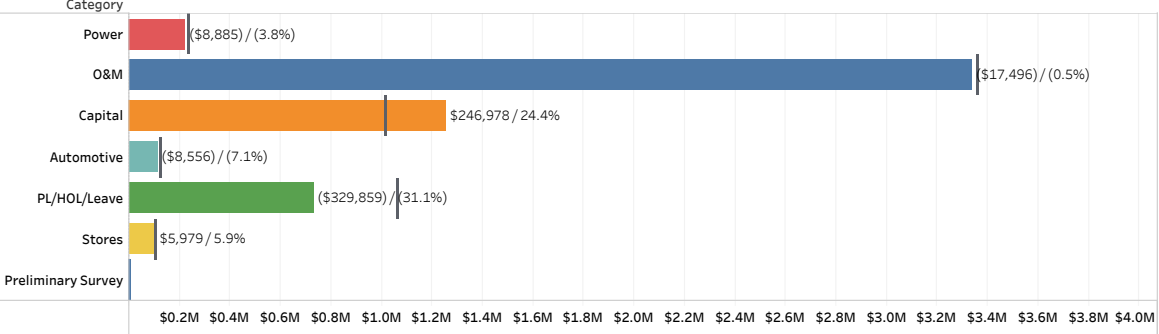


YTD April 2025 Labor by Category: (Activity 11)  
Actuals & Original Budget

Category	Current Year Actuals	Current Year Budget	Variance Parameter (year)	Variance % Parameter (Year)	Prior Year Actual (year)	PY Var (year)	PY % Var (year)
Power	\$223,503	\$232,387	(\$8,885)	(3.8%)	\$241,541	(\$18,038)	(7.5%)
O&M	\$3,336,434	\$3,353,930	(\$17,496)	(0.5%)	\$3,280,632	\$55,802	1.7%
Capital	\$1,257,576	\$1,010,597	\$246,978	24.4%	\$1,145,571	\$112,004	9.8%
Automotive	\$111,763	\$120,319	(\$8,556)	(7.1%)	\$89,388	\$22,375	25.0%
PL/HOL/Leave	\$730,842	\$1,060,701	(\$329,859)	(31.1%)	\$722,465	\$8,377	1.2%
Stores	\$106,956	\$100,977	\$5,979	5.9%	\$106,686	\$271	0.3%
Preliminary Survey			\$0		(\$433)	\$433	(100.0%)
Grand Total	\$5,767,074	\$5,878,912	(\$111,839)	(12.2%)	\$5,585,849	\$181,224	(69.5%)

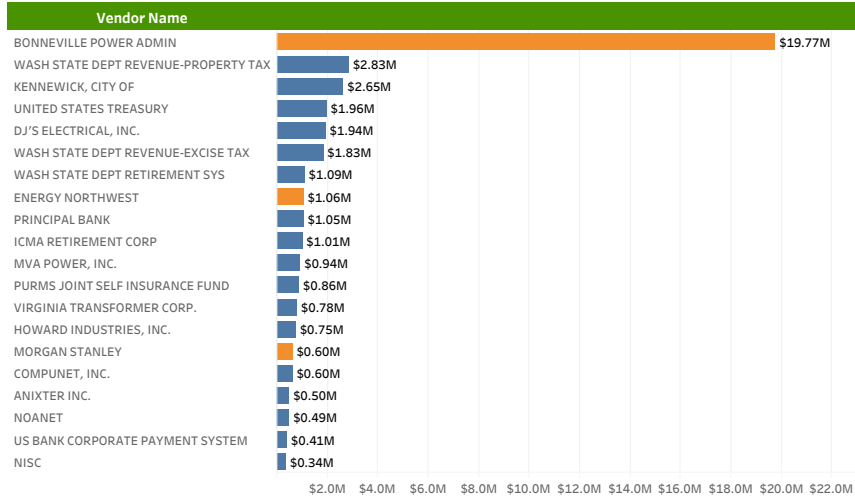


YTD April 2025 Labor by Category: (Activity 11)  
(Amount displayed is actuals minus budget / % variance from budget)

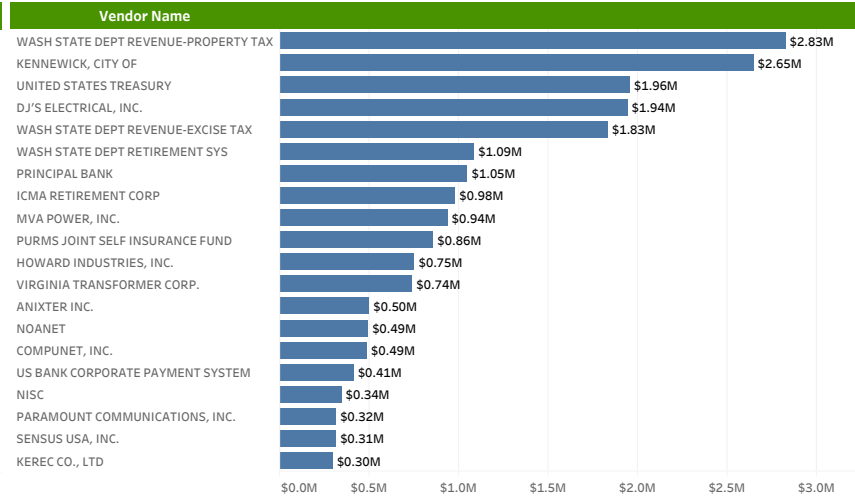




## District Top 20 Vendors - 2025 YTD (Including Power Transactions)



## District Top 20 Vendors - 2025 YTD (Excluding Power Transactions)



Year  
2025

Top N Vendor  
20

# Revenue Class Hourly Demand

By Year for Revenue Class: **All** in Month: **May**

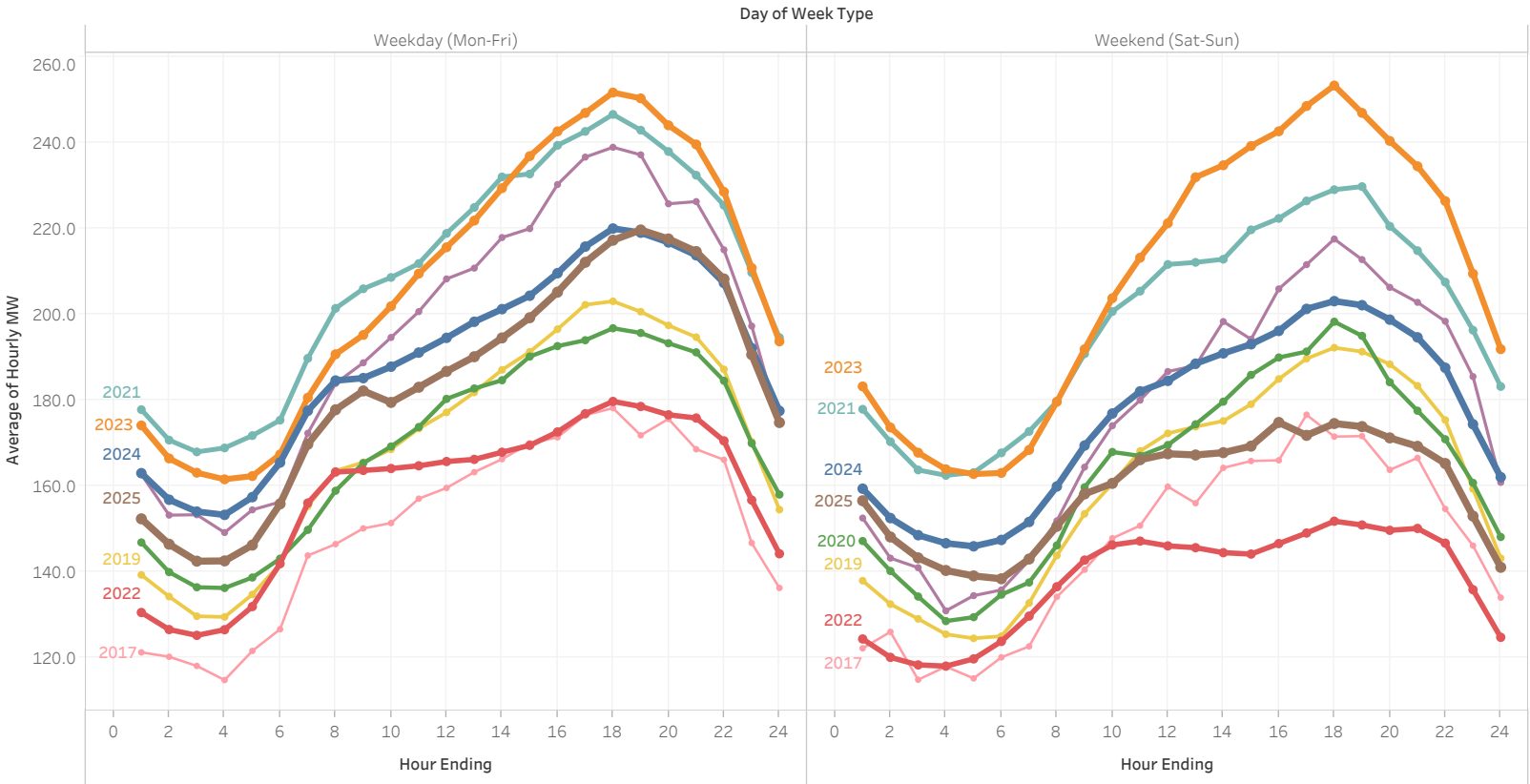
Select filters: Year: **All** Month: **May**

Billed Revenue Class  
☒ In  
☐ Out

- Revenue Class
- ☒ Residential
  - ☒ Small General
  - ☒ Medium General
  - ☒ Large General
  - ☒ Large Industrial
  - ☒ Large Irrigation
  - ☒ Small Irrigation

- Year of Date
- 2025
  - 2024
  - 2023
  - 2022
  - 2021
  - 2020
  - 2019
  - 2018
  - 2017

AMI data updated through:  
Tue, May 20, 2025



# Revenue Class Hourly Demand

By Year for Revenue Class: **Residential** in Month: **May**

Select filters: Year All Month May

Billed Revenue Class

☒ In  
☐ Out

Revenue Class

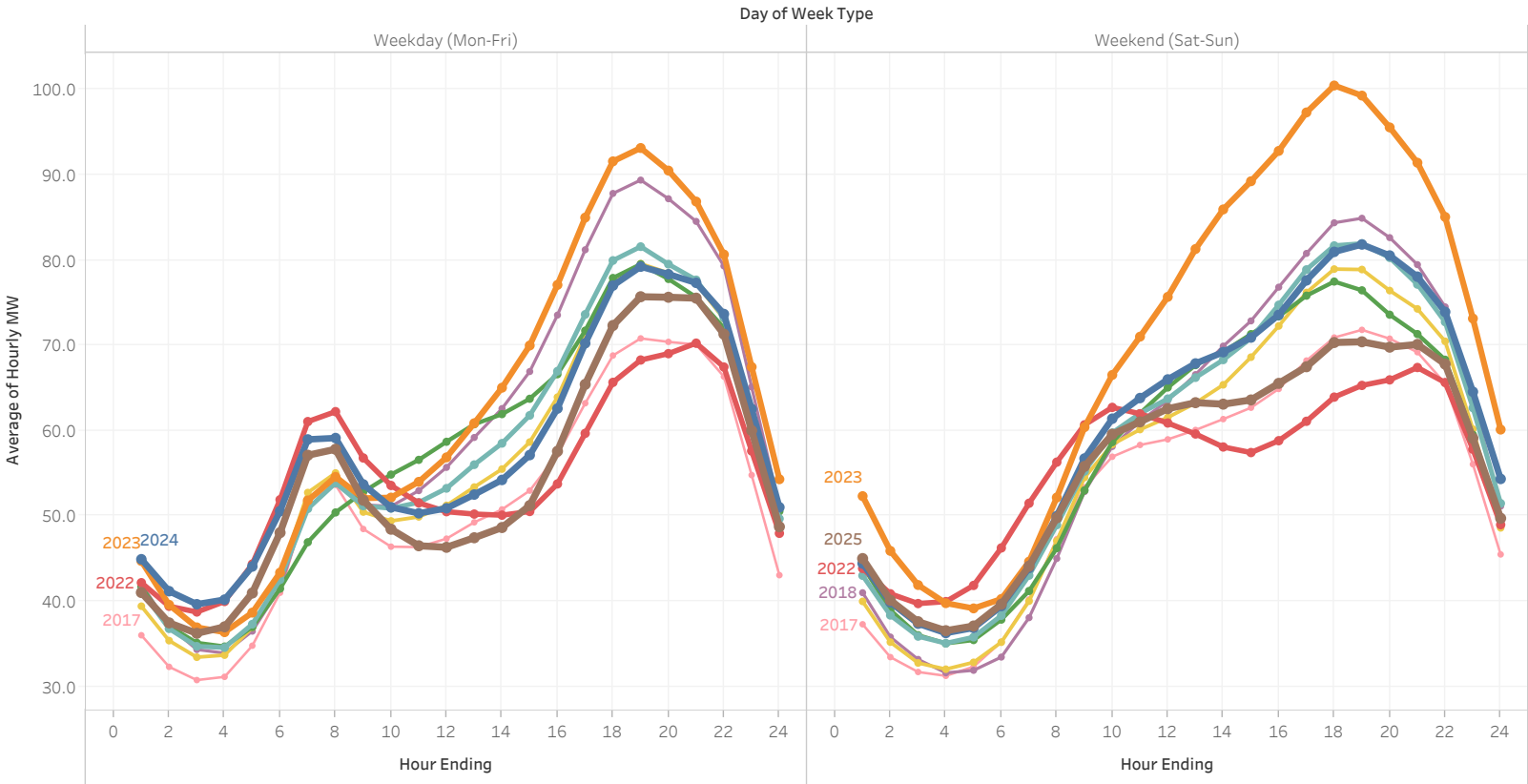
- ☒ Residential
- ☐ Small General
- ☐ Medium General
- ☐ Large General
- ☐ Large Industrial
- ☐ Large Irrigation
- ☐ Small Irrigation

Year of Date

- 2025
- 2024
- 2023
- 2022
- 2021
- 2020
- 2019
- 2018
- 2017

AMI data updated through:

Tue, May 20, 2025



# Revenue Class Hourly Demand

By Year for Revenue Class: **Small General, Medium General, Large General** in Month: **May**

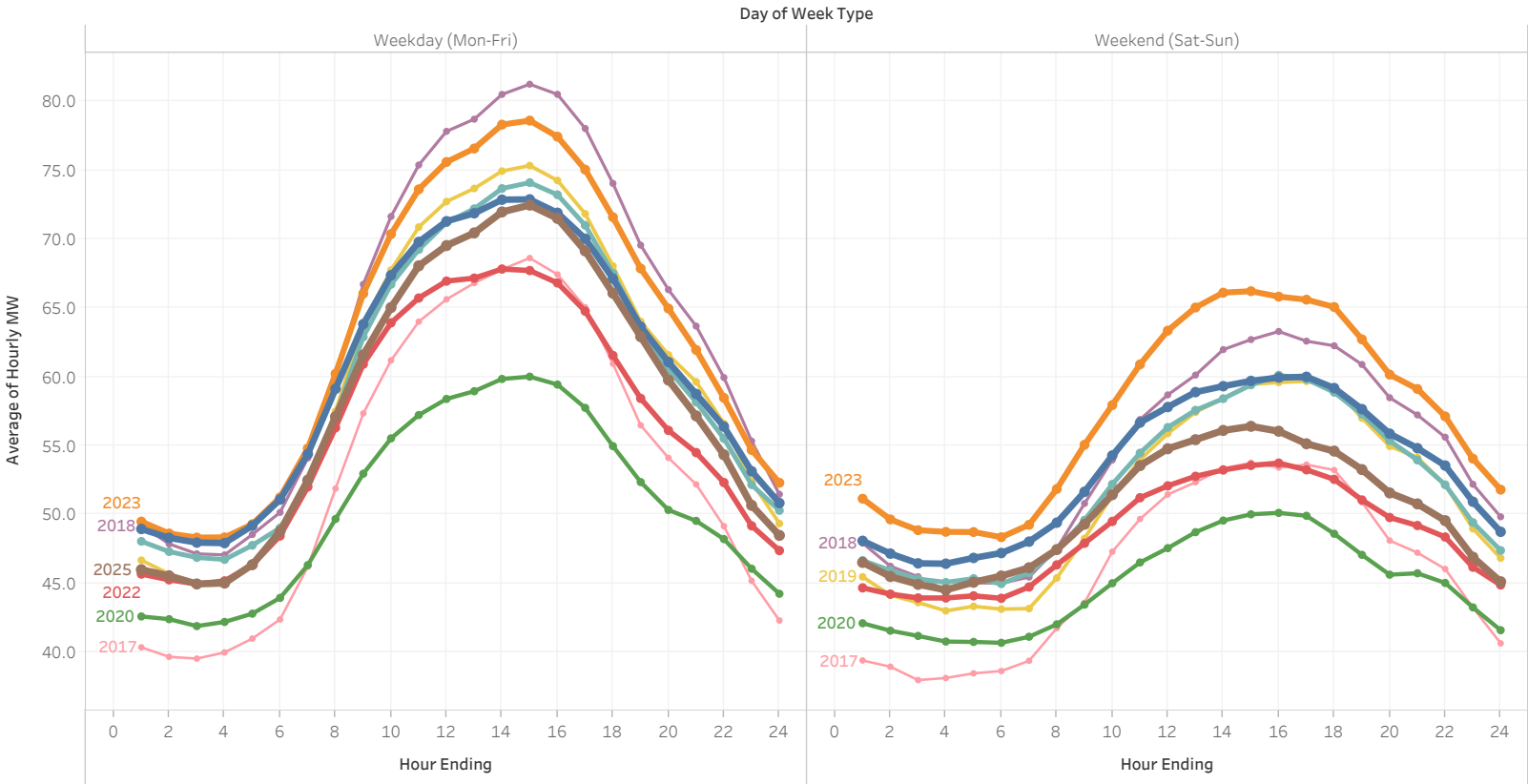
Select filters: Year All Month May

Billed Revenue Class  
☒ In  
☐ Out

- Revenue Class
- ☐ Residential
  - ☒ Small General
  - ☒ Medium General
  - ☒ Large General
  - ☐ Large Industrial
  - ☐ Large Irrigation
  - ☐ Small Irrigation

- Year of Date
- 2025
  - 2024
  - 2023
  - 2022
  - 2021
  - 2020
  - 2019
  - 2018
  - 2017

AMI data updated through:  
Tue, May 20, 2025



# Revenue Class Hourly Demand

By Year for Revenue Class: **Large Irrigation** in Month: **May**

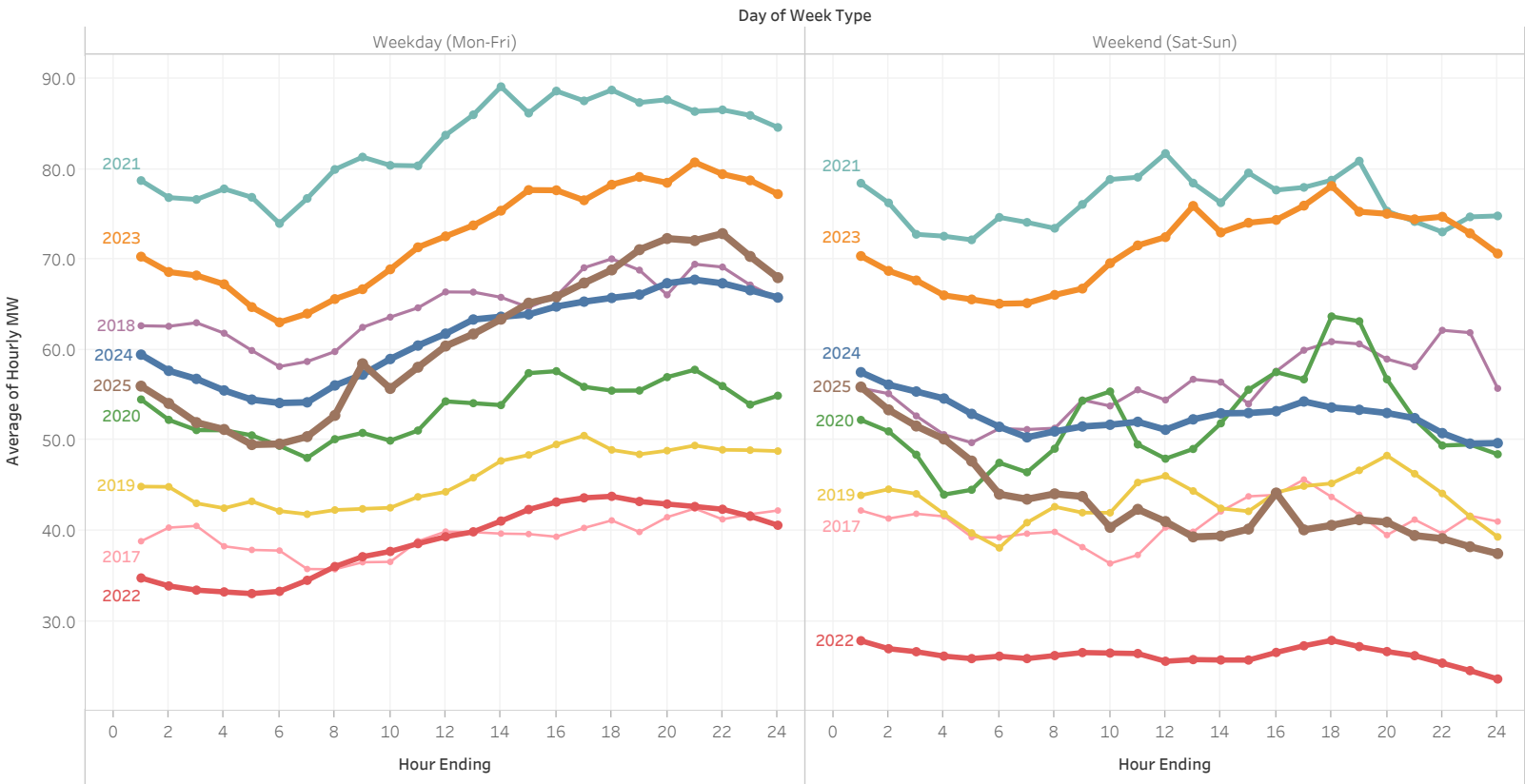
Select filters: Year All Month May

Billed Revenue Class  
☒ In  
☐ Out

- Revenue Class
- ☐ Residential
  - ☐ Small General
  - ☐ Medium General
  - ☐ Large General
  - ☒ Large Irrigation
  - ☐ Small Irrigation

- Year of Date
- 2025
  - 2024
  - 2023
  - 2022
  - 2021
  - 2020
  - 2019
  - 2018
  - 2017

AMI data updated through:  
Tue, May 20, 2025



# Revenue Class Cumulative Energy

By Year for Revenue Class: **All** in Month: **May**

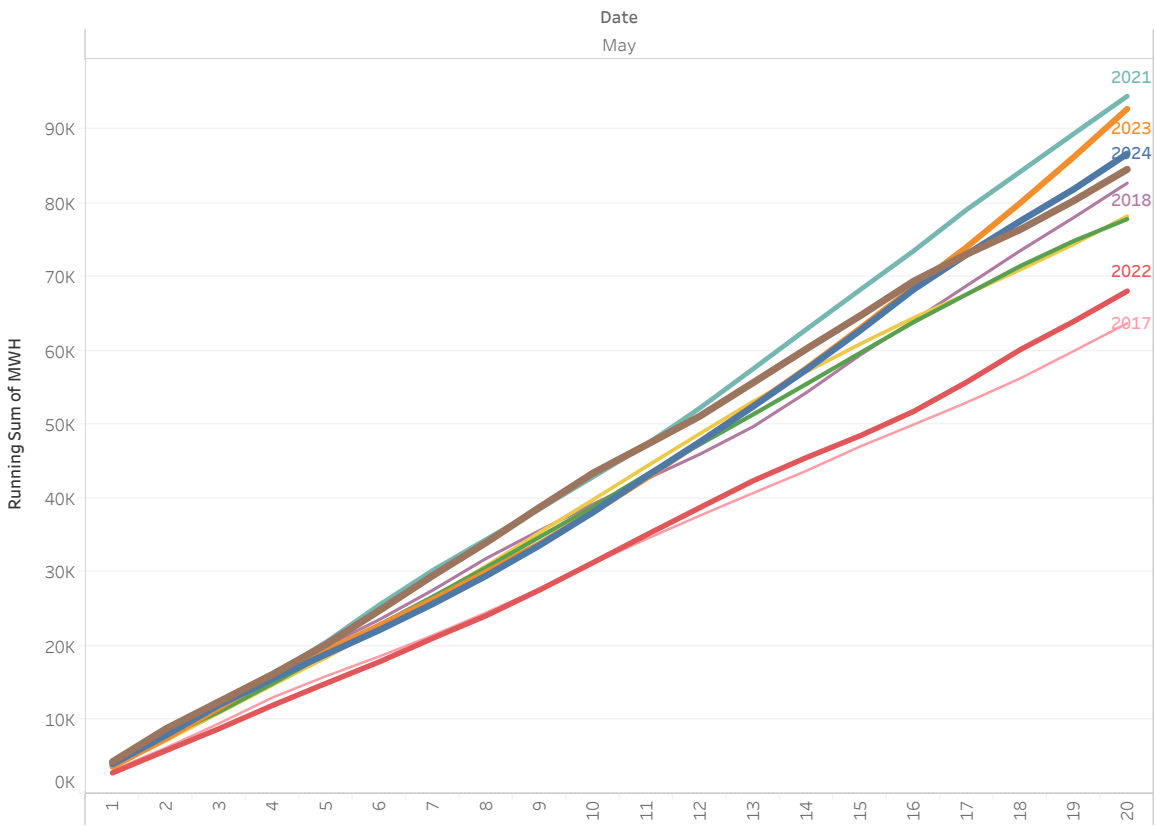
Select filters:      Year: All      Month: May      Month-Day: Multiple values

Billed Revenue Class  
☒ In  
☐ Out

- Revenue Class
- ☒ Residential
  - ☒ Small General
  - ☒ Medium General
  - ☒ Large General
  - ☒ Large Industrial
  - ☒ Large Irrigation
  - ☒ Small Irrigation

- Year of Date
- 2025
  - 2024
  - 2023
  - 2022
  - 2021
  - 2020
  - 2019
  - 2018
  - 2017

AMI data updated through:  
Tue, May 20, 2025



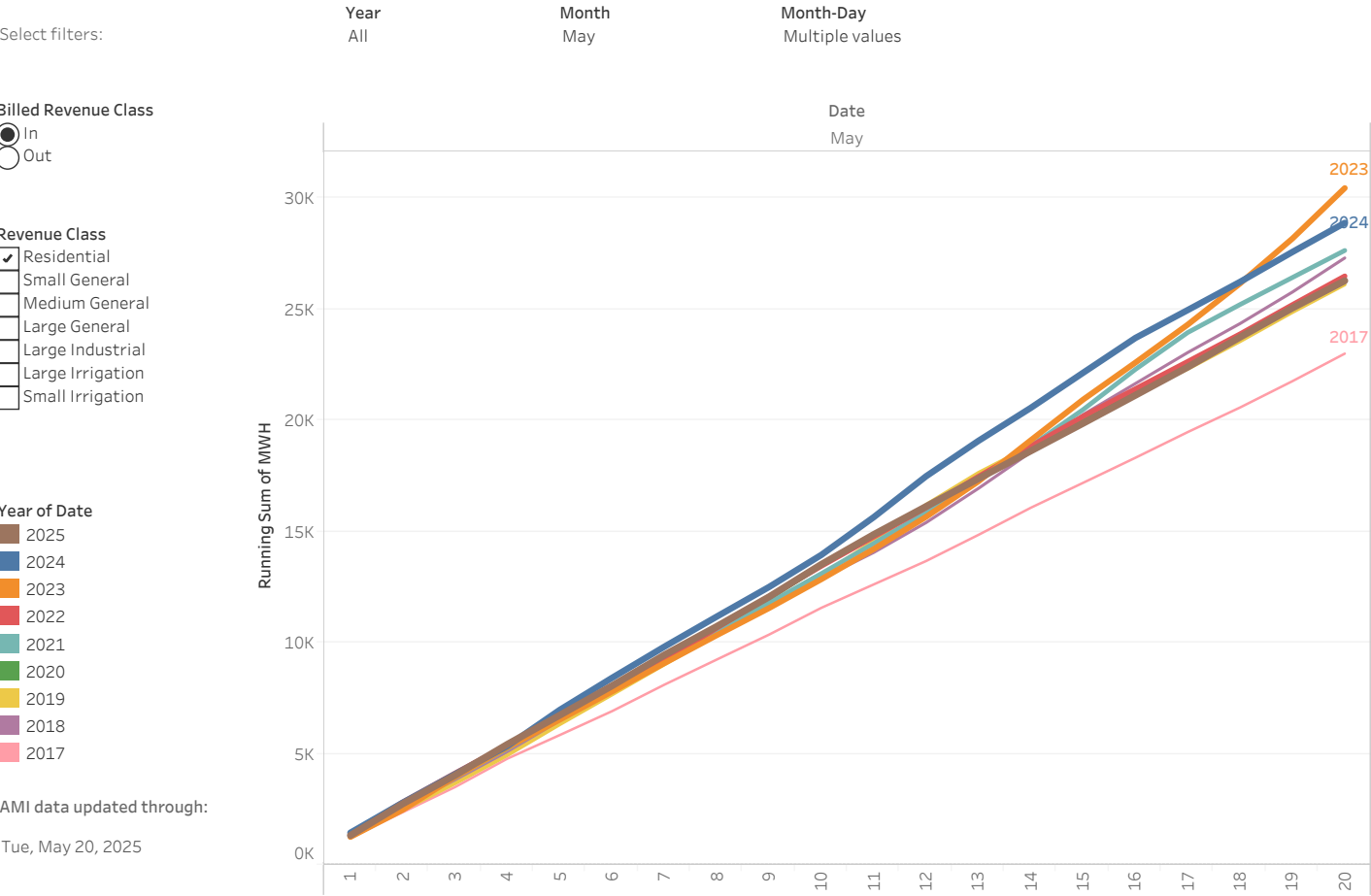
Year Over Year Summary:  
(hover to highlight year)

Year of Date	MWH		%	
		Difference	Difference	
2017	63,756			
2018	82,727	18,970	29.75%	
2019	78,265	-4,462	-5.39%	
2020	77,859	-405	-0.52%	
2021	94,508	16,648	21.38%	
2022	68,108	-26,399	-27.93%	
2023	92,790	24,681	36.24%	
2024	86,708	-6,081	-6.55%	
2025	84,596	-2,112	-2.44%	

Note:  
Totals do not include  
non-AMI meter readings.

# Revenue Class Cumulative Energy

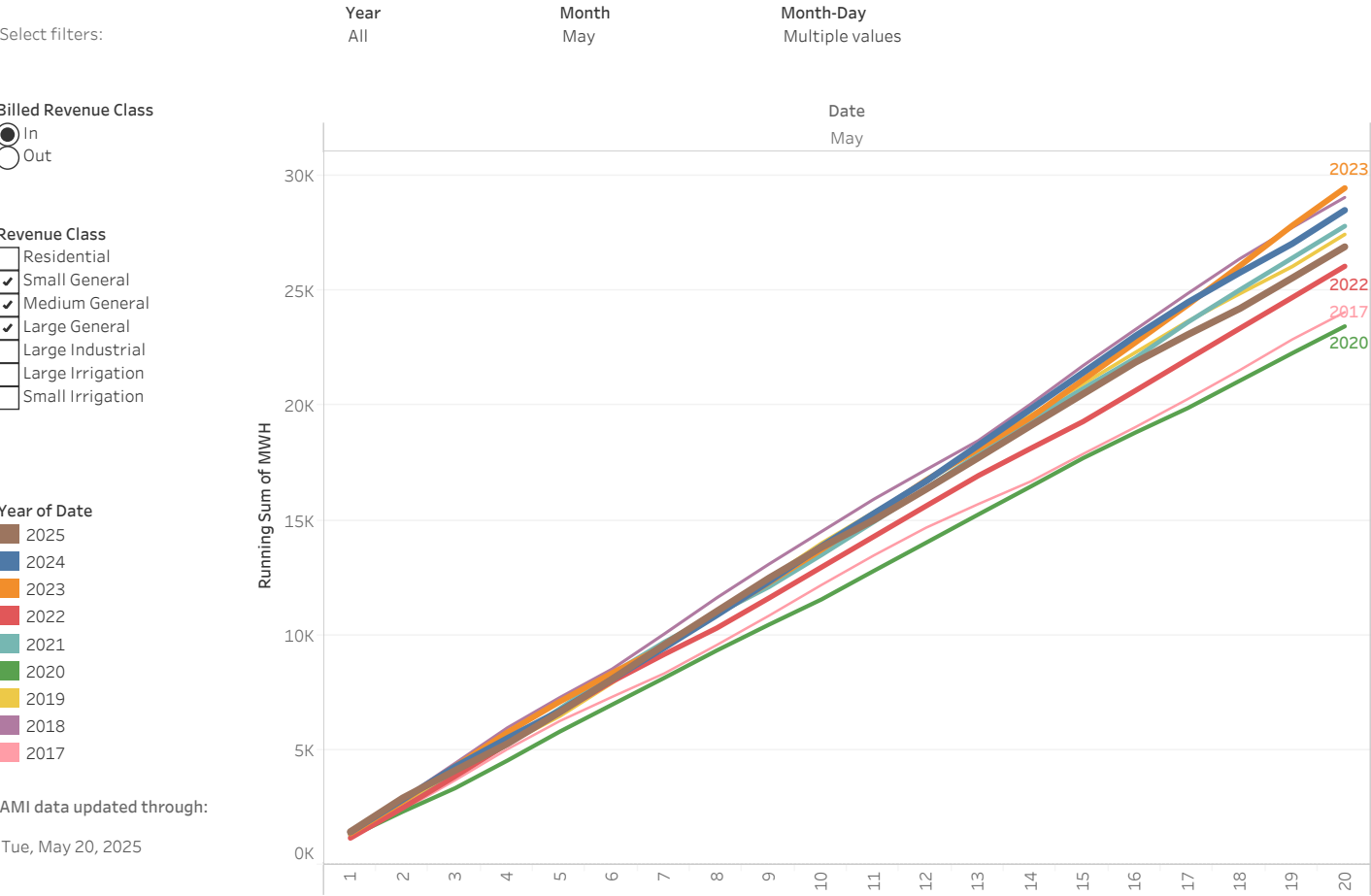
By Year for Revenue Class: **Residential** in Month: **May**



Note:  
Totals do not include  
non-AMI meter readings.

# Revenue Class Cumulative Energy

By Year for Revenue Class: **Small General, Medium General, Large General** in Month: **May**





# Revenue Class Cumulative Energy

By Year for Revenue Class: **Large Irrigation** in Month: **May**

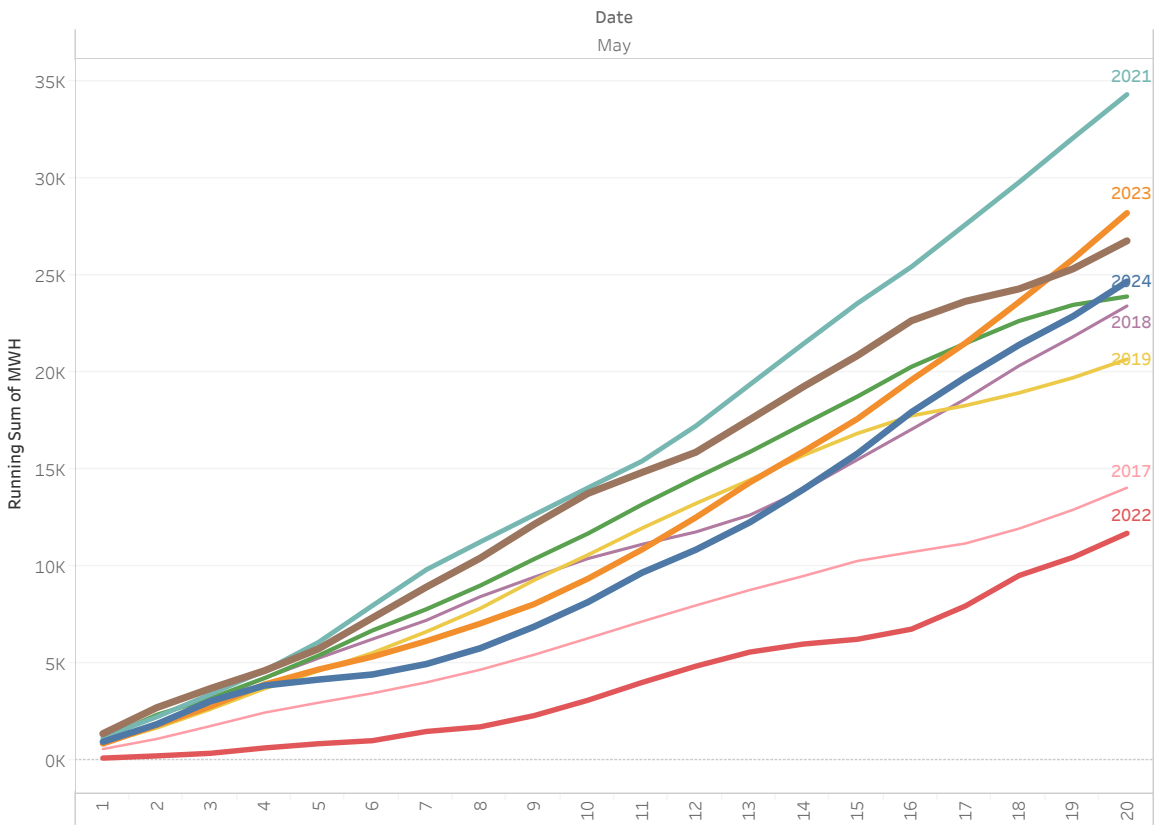
Select filters:      Year: All      Month: May      Month-Day: Multiple values

Billed Revenue Class  
☒ In  
☐ Out

- Revenue Class
- ☐ Residential
  - ☐ Small General
  - ☐ Medium General
  - ☐ Large General
  - ☐ Large Industrial
  - ☒ Large Irrigation
  - ☐ Small Irrigation

- Year of Date
- 2025
  - 2024
  - 2023
  - 2022
  - 2021
  - 2020
  - 2019
  - 2018
  - 2017

AMI data updated through:  
Tue, May 20, 2025



Year Over Year Summary:  
(hover to highlight year)

Year of Date	MWH		%	
		Difference	Difference	
2017	14,044			
2018	23,417	9,374	66.75%	
2019	20,670	-2,748	-11.73%	
2020	23,905	3,235	15.65%	
2021	34,324	10,419	43.59%	
2022	11,695	-22,629	-65.93%	
2023	28,214	16,519	141.25%	
2024	24,672	-3,542	-12.55%	
2025	26,776	2,104	8.53%	

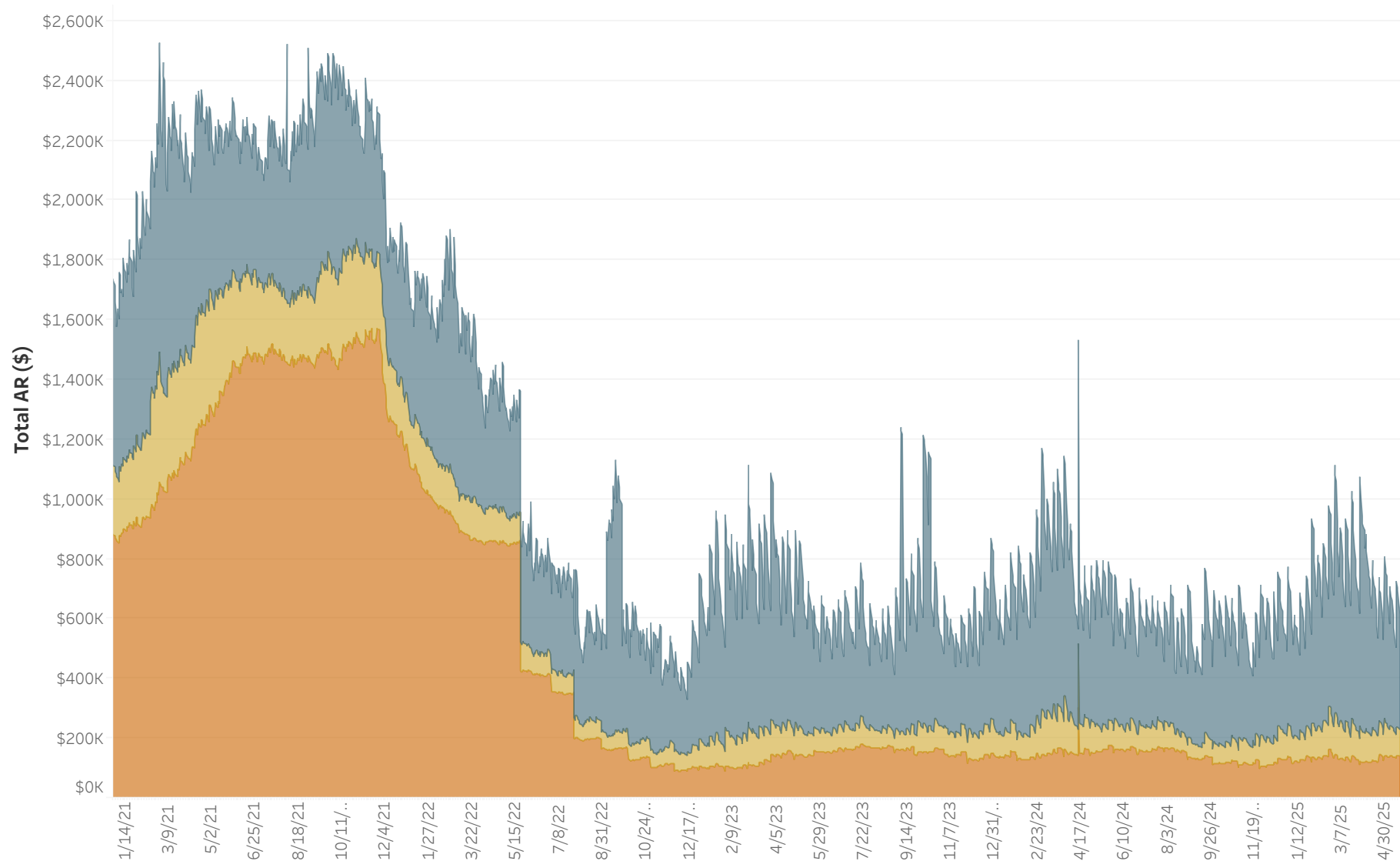
Note:  
Totals do not include non-AMI meter readings.

No AMI readings for the pump decks at Spaw, Paterson #1 & #2 and Prior #1 Bay 1 & 2.



# Past Due AR in Dollars for Selected Revenue Classes:

All  
Balance Aging: 30 Days | 60 Days | 90+ Days



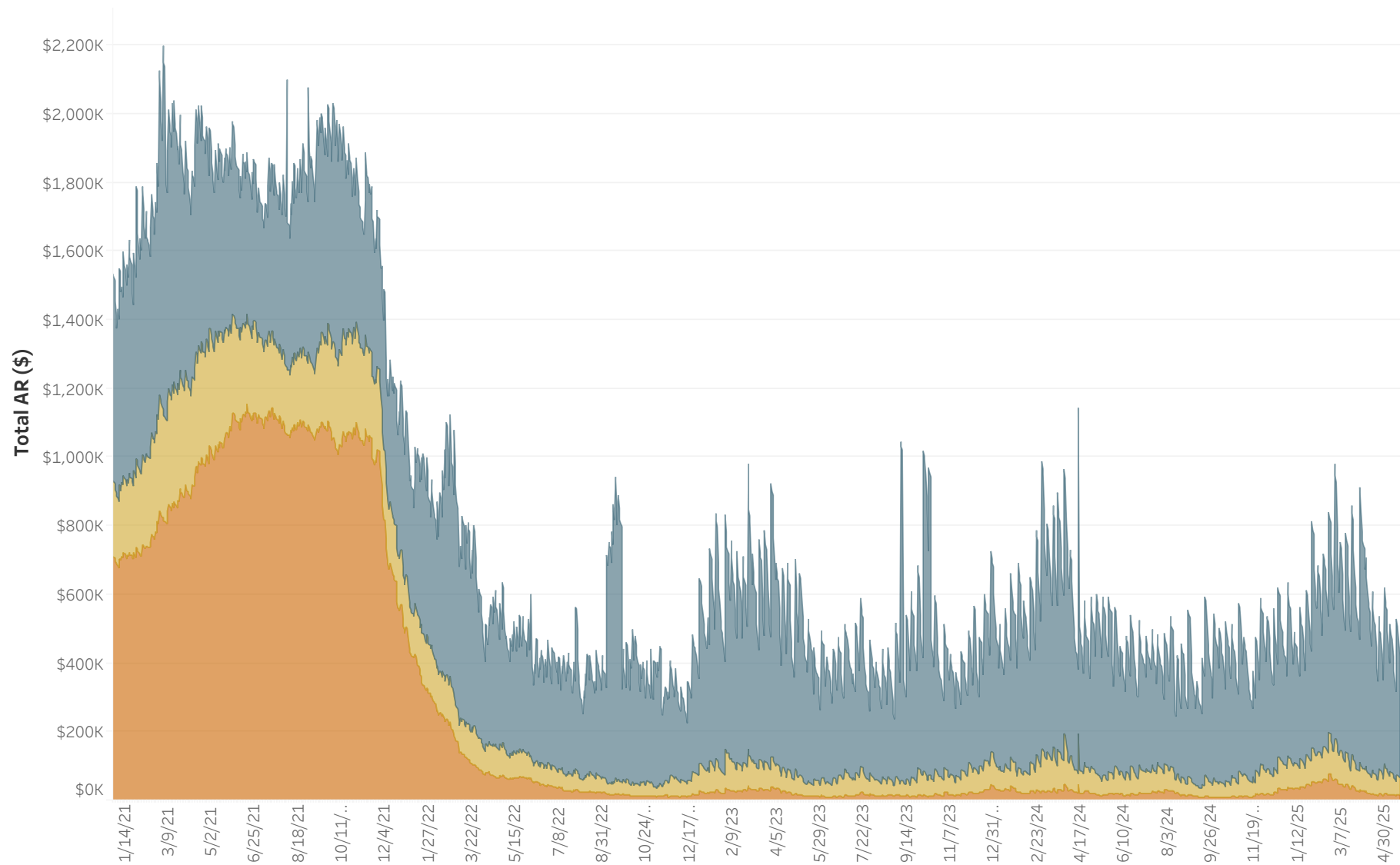
Consumer Class Selection:	Accounts		Dollars
	Regular		
Revenue Class Selection:	30 Days	3,031	\$388,344
	60 Days	692	\$85,413
	90+ Days	725	\$139,616
	Past Due	4,448	\$613,372
Service Status:	Total AR	54,168	\$6,159,247
	All		

AR data as of 5/20/2025. Data source is AR Balance History Tableau report view.

# Past Due AR in Dollars for Selected Revenue Classes:

All  
Balance Aging: 30 Days | 60 Days | 90+ Days

Consumer Class Selection:		Accounts	Dollars
Regular	30 Days	2,845	\$359,126
	60 Days	567	\$49,742
	90+ Days	139	\$13,740
Revenue Class Selection:			
All		Past Due	3,551 \$422,608
Service Status:			
Active		Total AR	52,142 \$5,953,718

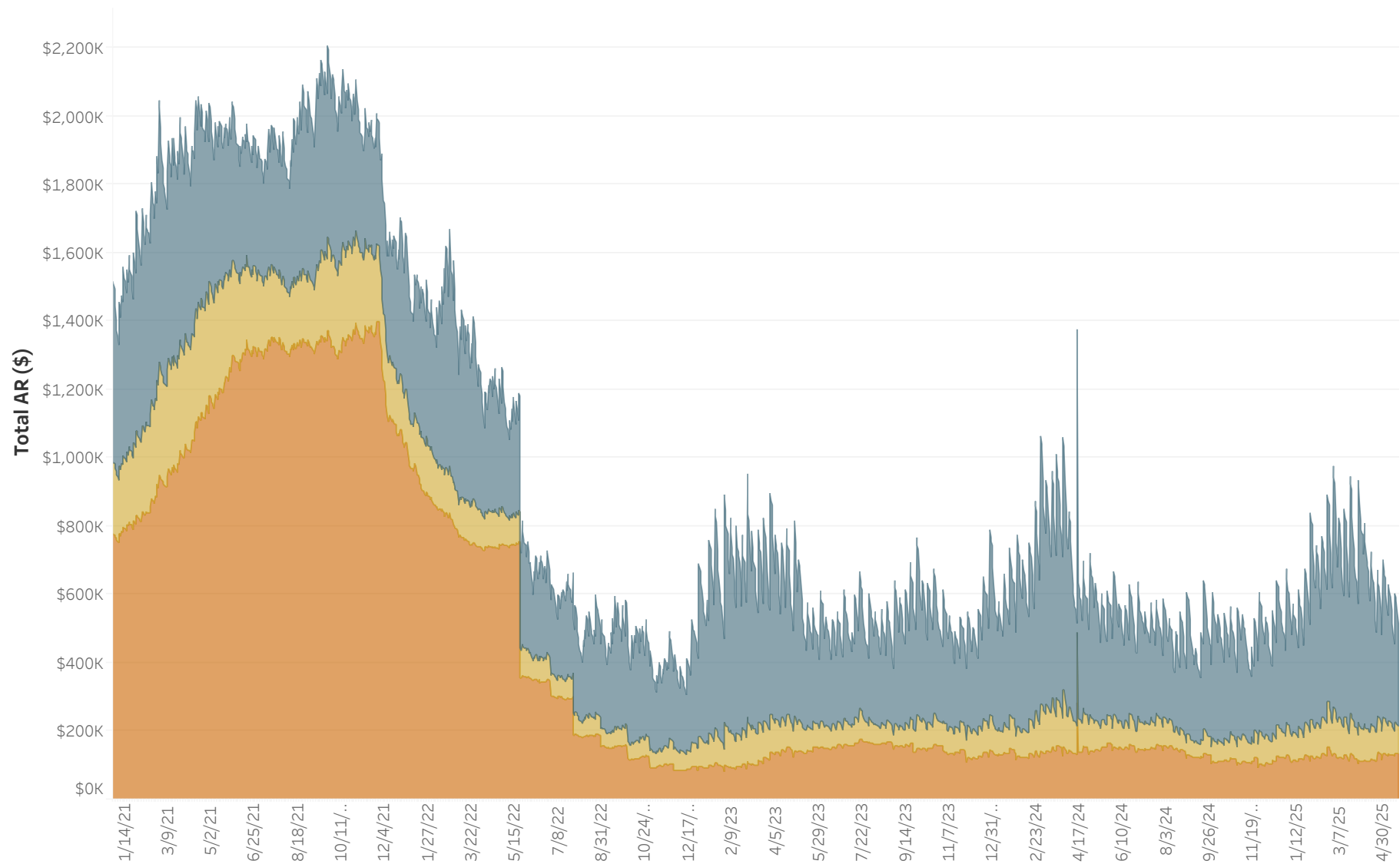


AR data as of 5/20/2025. Data source is AR Balance History Tableau report view.

# Past Due AR in Dollars for Selected Revenue Classes:

## Residential

Balance Aging: 30 Days | 60 Days | 90+ Days



### Consumer Class Selection:

Regular

### Revenue Class Selection:

Residential

### Service Status:

All

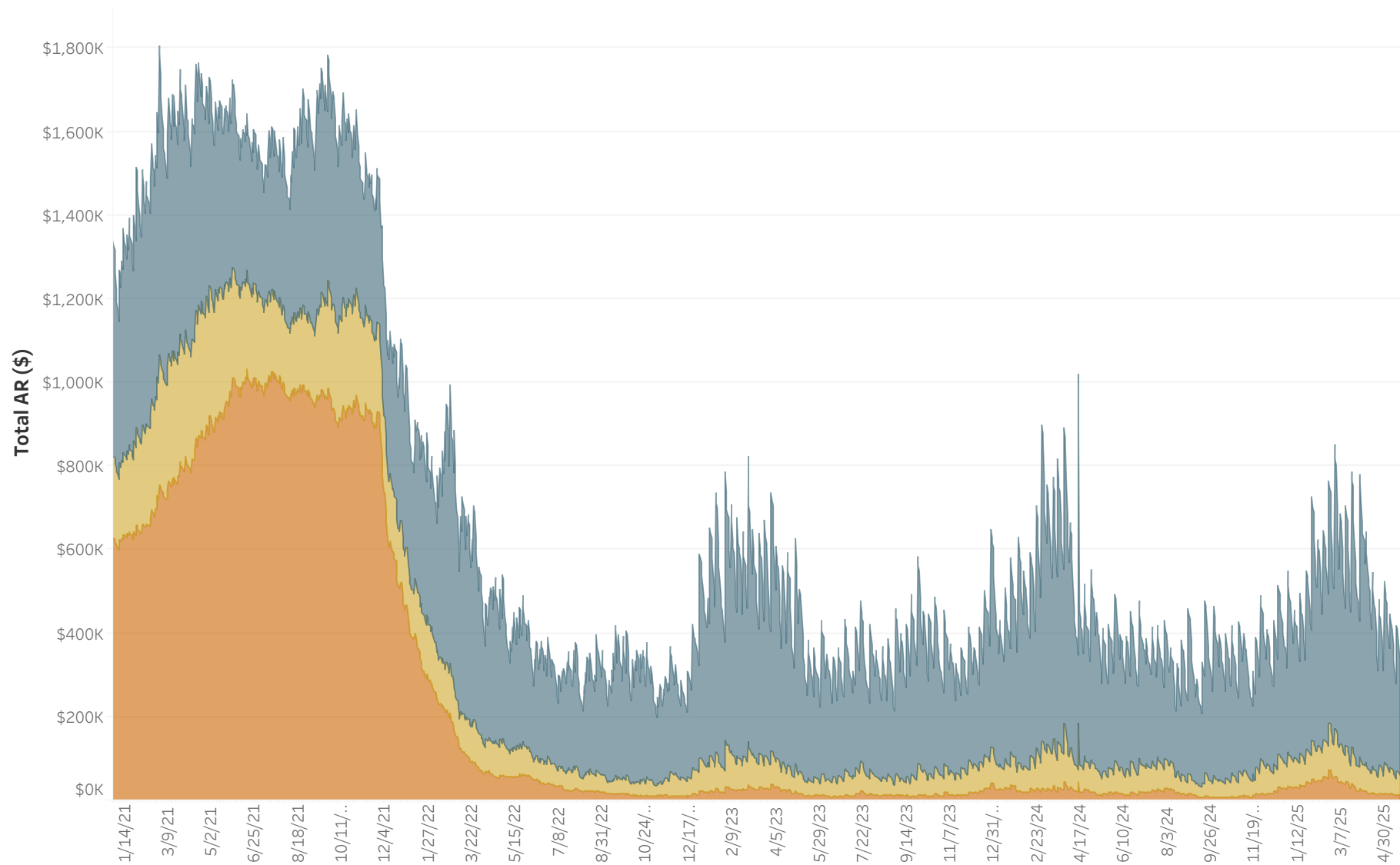
	Accounts	Dollars
30 Days	2,596	\$302,554
60 Days	610	\$79,828
90+ Days	676	\$132,816
Past Due	3,882	\$515,197
Total AR	44,940	\$2,392,436

AR data as of 5/20/2025. Data source is AR Balance History Tableau report view.

# Past Due AR in Dollars for Selected Revenue Classes:

## Residential

Balance Aging: 30 Days | 60 Days | 90+ Days

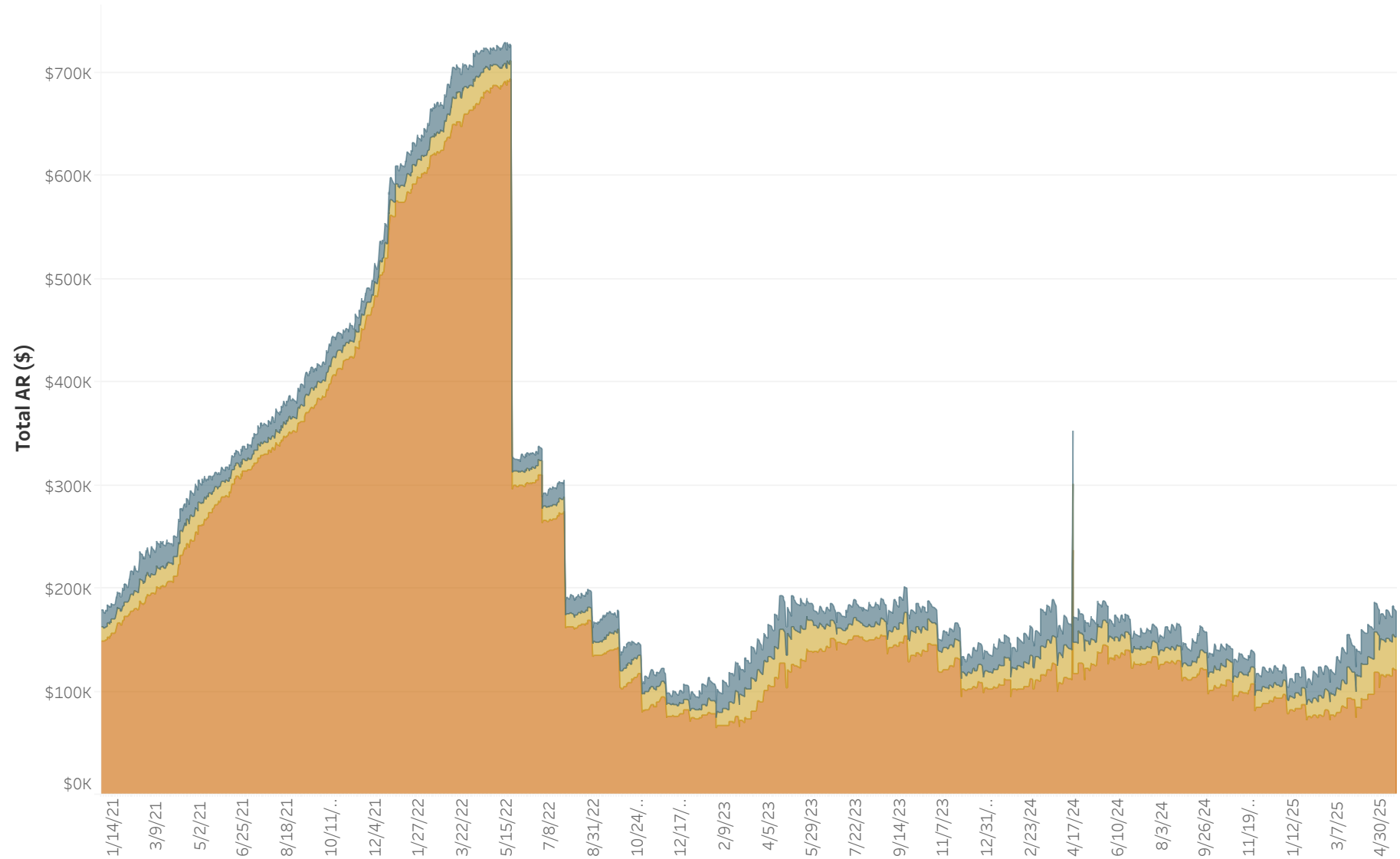


AR data as of 5/20/2025. Data source is AR Balance History Tableau report view.

Past Due AR in Dollars for Selected Revenue Classes:

Residential

Balance Aging: 30 Days | 60 Days | 90+ Days



Consumer Class Selection:

Regular

Revenue Class Selection:

Residential

Service Status:

Inactive

	Accounts	Dollars
30 Days	159	\$25,328
60 Days	118	\$31,922
90+ Days	561	\$120,287
Past Due	838	\$177,538
Total AR	1,627	\$188,657

AR data as of 5/20/2025. Data source is AR Balance History Tableau report view.