


Hourly Temperature

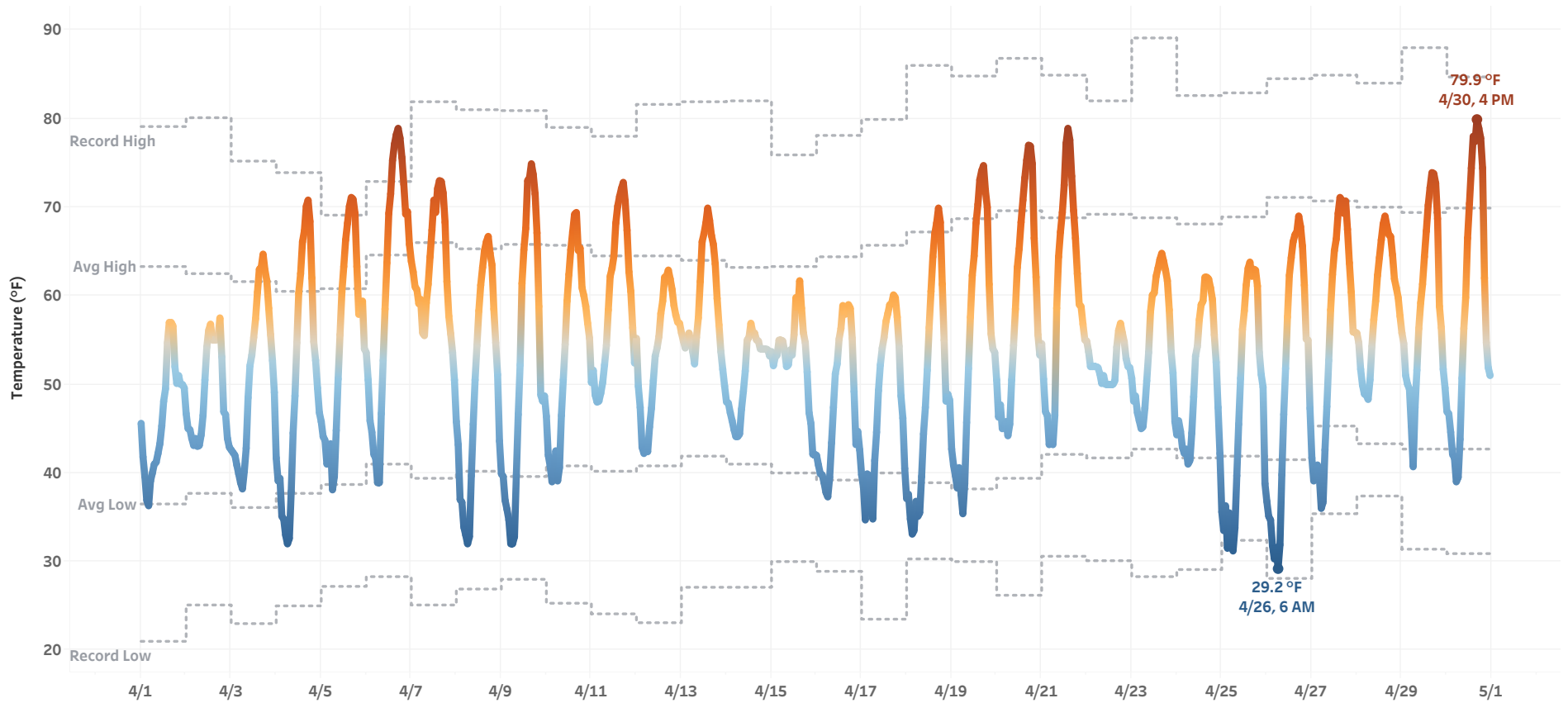
Hourly temperatures at Tri-Cities Airport with daily averages & records from 2000-2024

Hourly Temperature (°F)
29  80

Month
All

Month Year
April 2026

April 2026



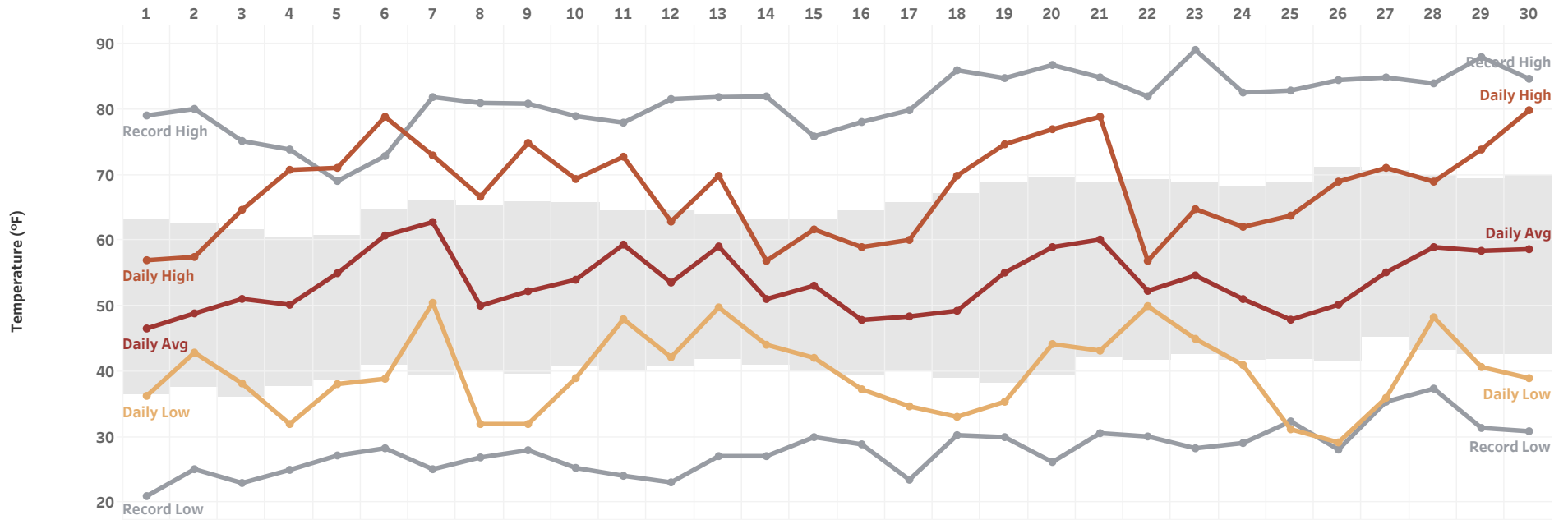
Daily Temperature

Daily temperatures at Tri-Cities Airport with [daily averages & records from 2000-2024](#)

Month
All

Month Year
April 2026

April 2026



	1	2	3	4	5	6	7	8	9	10	11	12	13	14	15	16	17	18	19	20	21	22	23	24	25	26	27	28	29	30
Record High	79.1	80.1	75.2	73.9	69.1	72.9	81.9	81.0	80.9	79.0	78.0	81.6	81.9	82.0	75.9	78.1	79.9	86.0	84.8	86.8	84.9	82.0	89.1	82.6	82.9	84.5	84.9	84.0	88.0	84.7
Avg High	63.3	62.5	61.6	60.5	60.8	64.6	66.0	65.3	65.8	65.7	64.5	64.5	64.0	63.2	63.3	64.4	65.7	67.2	68.7	69.6	68.8	69.2	68.8	68.1	68.9	71.1	70.7	70.0	69.4	69.9
Daily High	57.0	57.5	64.7	70.8	71.1	78.9	73.0	66.7	74.9	69.4	72.8	62.9	69.9	56.9	61.7	59.0	60.1	69.9	74.7	77.0	78.9	56.9	64.8	62.1	63.8	69.0	71.1	69.0	73.9	79.9
Daily Avg	46.6	48.9	51.1	50.2	55.0	60.8	62.8	50.1	52.3	54.0	59.4	53.6	59.1	51.1	53.1	47.9	48.4	49.3	55.1	59.0	60.2	52.3	54.7	51.1	47.9	50.2	55.2	59.0	58.4	58.7
Daily Low	36.3	42.9	38.2	32.0	38.1	38.9	50.5	32.0	32.0	39.0	48.0	42.2	49.8	44.1	42.1	37.3	34.7	33.1	35.4	44.2	43.2	50.0	45.0	41.0	31.2	29.2	36.0	48.3	40.7	39.0
Avg Low	36.5	37.7	36.1	37.7	38.7	41.0	39.4	40.2	39.6	40.8	40.2	40.8	41.9	41.0	40.0	39.2	40.0	38.9	38.2	39.4	42.1	41.7	42.7	41.7	41.9	41.5	45.3	43.3	42.7	42.7
Record Low	21.0	25.1	23.0	25.0	27.2	28.3	25.1	26.9	28.0	25.3	24.1	23.1	27.1	27.1	30.0	28.9	23.5	30.3	30.0	26.2	30.6	30.1	28.3	29.1	32.4	28.1	35.4	37.4	31.4	30.9

Cumulative Retail Revenue Budget vs Actuals (Original and Amended Budget): All

Rate Class
All



Filter Date Year
Multiple values

Filter Date Month
Multiple values

Legend

- Budget
- Amended Budget
- Actual
- Cumulative Variance Original
- Cumulative Variance Amended
- Month Over / (Under)
- Heating Degree Days
- Cooling Degree Days

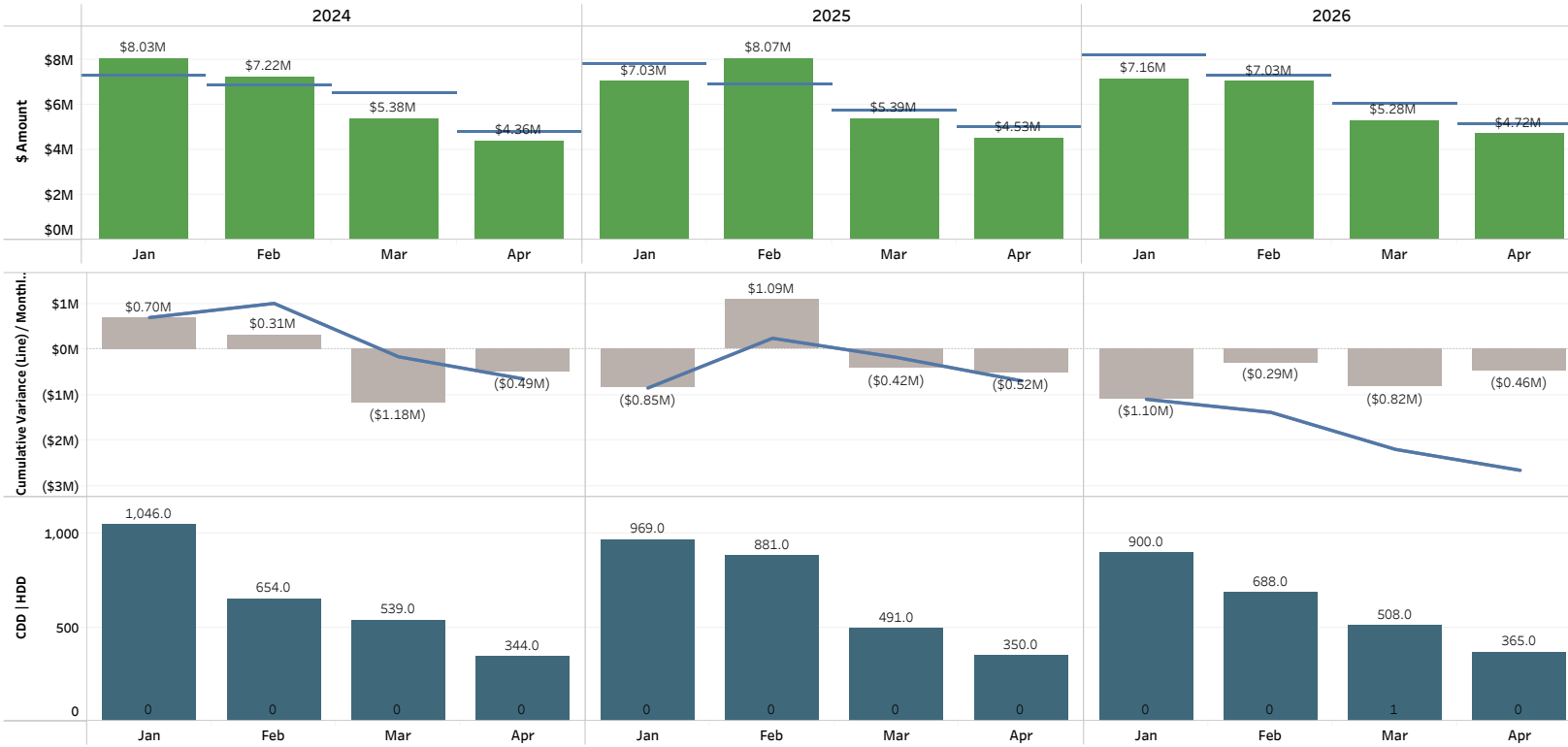
Note: Cumulative budget amendment changes are reflected in the month of September.

Cooling Degree Days (CDD) are a measure of how hot the temperature was on a given day or during a period of days. CDD's quantify the demand for energy needed to cool buildings. The higher the CDD's, the hotter the region is.

Heating Degree Days (HDD) are a measure of how cold the temperature was on a given day or during a period of days. HDD's quantify the demand for energy needed to heat buildings. The higher the HDD's, the colder the region is.

Cumulative Retail Revenue Budget vs Actuals (Original and Amended Budget): Residential Sales

Rate Class
Residential Sales



Filter Date Year
Multiple values

Filter Date Month
Multiple values

Legend

- Budget
- Amended Budget
- Actual
- Cumulative Variance Original
- Cumulative Variance Amended
- Month Over / (Under)
- Heating Degree Days
- Cooling Degree Days

Note: Cumulative budget amendment changes are reflected in the month of September.

Cooling Degree Days (CDD) are a measure of how hot the temperature was on a given day or during a period of days. CDD's quantify the demand for energy needed to cool buildings. The higher the CDD's, the hotter the region is.

Heating Degree Days (HDD) are a measure of how cold the temperature was on a given day or during a period of days. HDD's quantify the demand for energy needed to heat buildings. The higher the HDD's, the colder the region is.

Cumulative Retail Revenue Budget vs Actuals (Original and Amended Budget): [Large General Service Sales](#), [Medium General Service Sales](#), [Small General Service Sales](#)

Rate Class
Multiple values

Filter Date Year
Multiple values

Filter Date Month
Multiple values

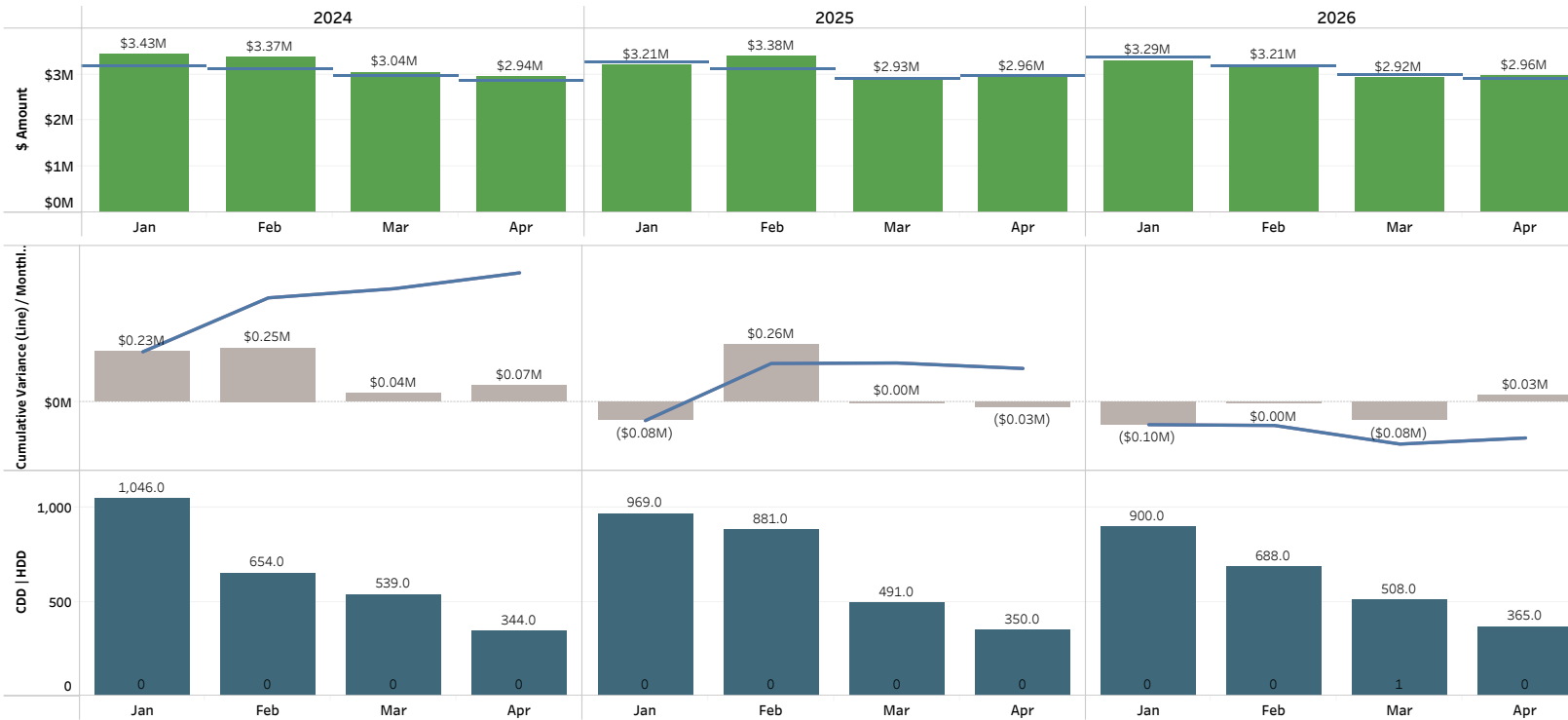
Legend

- Budget
- Amended Budget
- Actual
- Cumulative Variance Original
- Cumulative Variance Amended
- Month Over / (Under)
- Heating Degree Days
- Cooling Degree Days

Note: Cumulative budget amendment changes are reflected in the month of September.

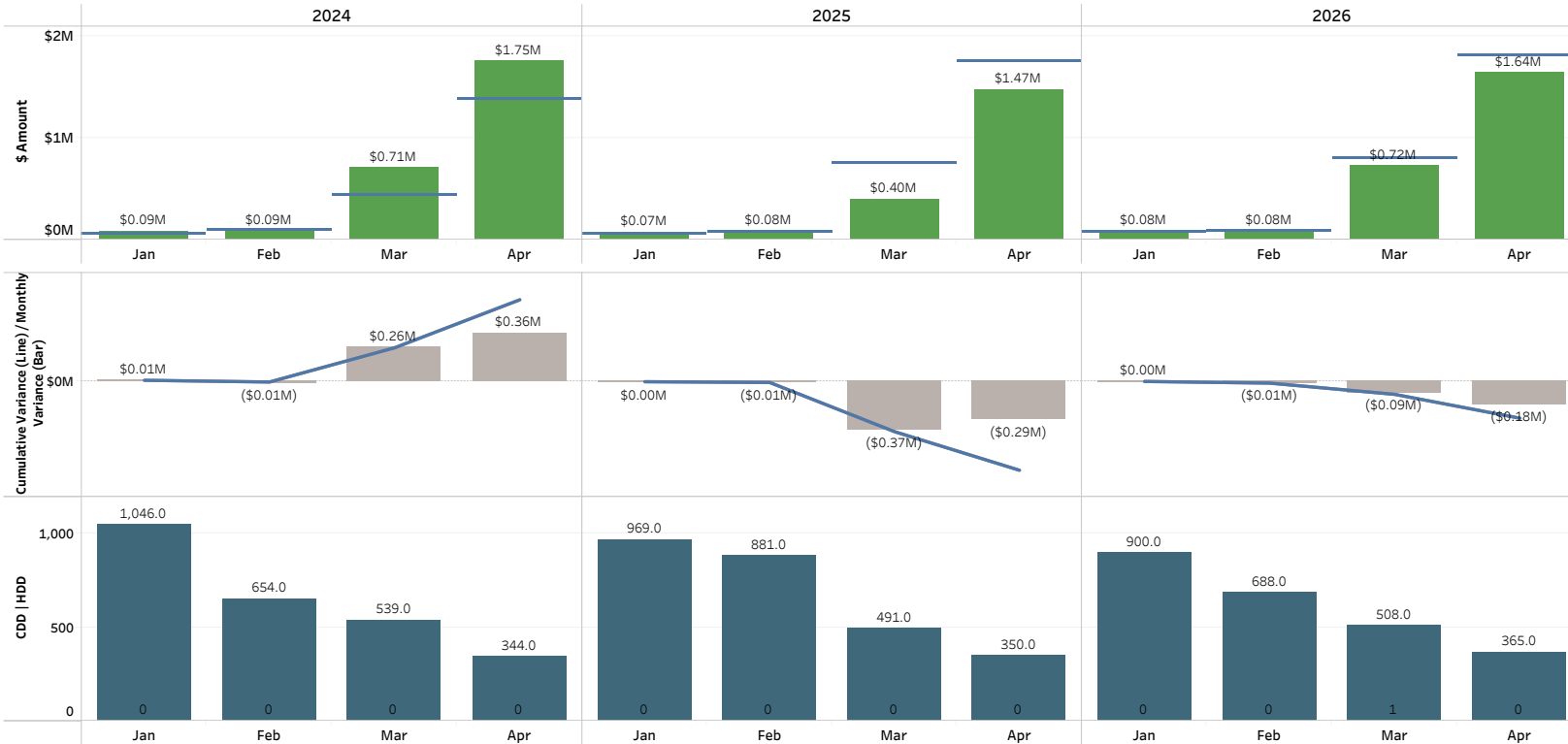
Cooling Degree Days (CDD) are a measure of how hot the temperature was on a given day or during a period of days. CDD's quantify the demand for energy needed to cool buildings. The higher the CDD's, the hotter the region is.

Heating Degree Days (HDD) are a measure of how cold the temperature was on a given day or during a period of days. HDD's quantify the demand for energy needed to heat buildings. The higher the HDD's, the colder the region is.



Cumulative Retail Revenue Budget vs Actuals (Original and Amended Budget): **Large Irrigation Sales**

Rate Class
Large Irrigation Sales



Filter Date Year
Multiple values

Filter Date Month
Multiple values

Legend

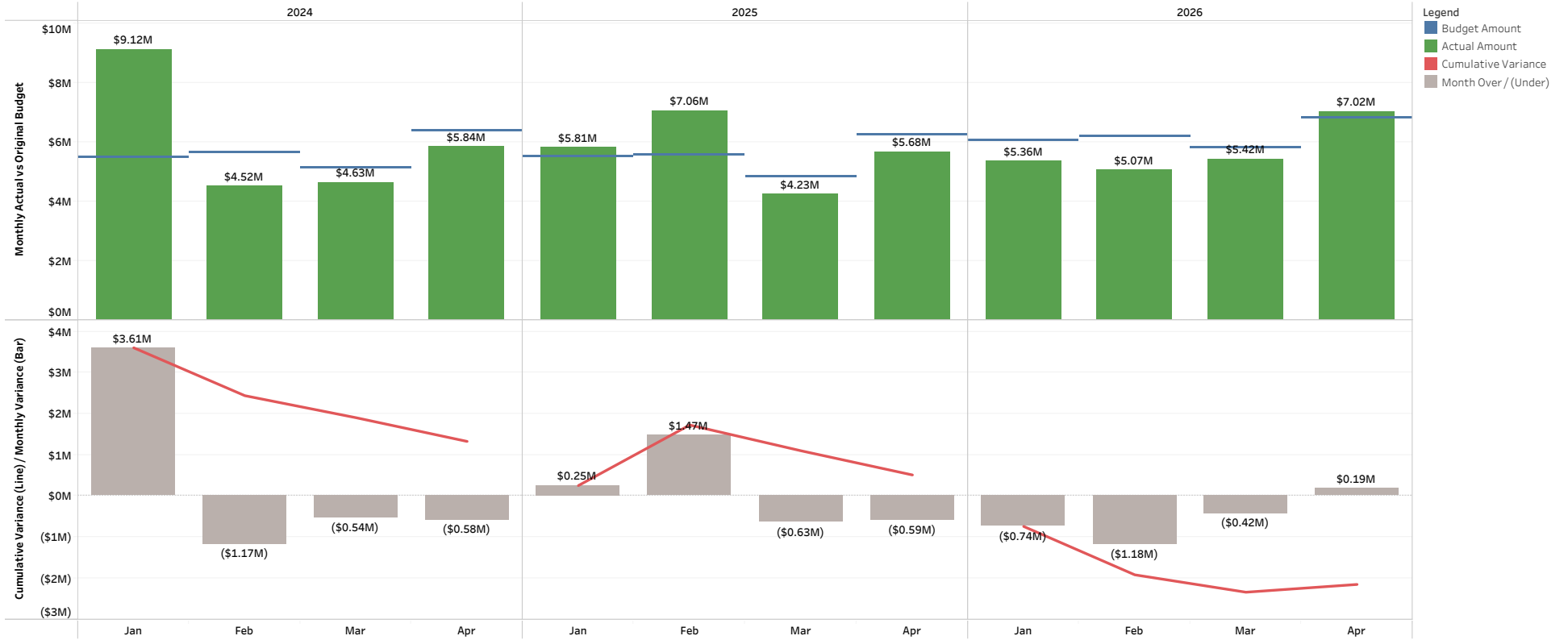
- Budget
- Amended Budget
- Actual
- Cumulative Variance Original
- Cumulative Variance Amended
- Month Over / (Under)
- Heating Degree Days
- Cooling Degree Days

Note: Cumulative budget amendment changes are reflected in the month of September.

Cooling Degree Days (CDD) are a measure of how hot the temperature was on a given day or during a period of days. CDD's quantify the demand for energy needed to cool buildings. The higher the CDD's, the hotter the region is.

Heating Degree Days (HDD) are a measure of how cold the temperature was on a given day or during a period of days. HDD's quantify the demand for energy needed to heat buildings. The higher the HDD's, the colder the region is.

Cumulative Net Power Cost Budget vs Actuals (Original Budget Only): All



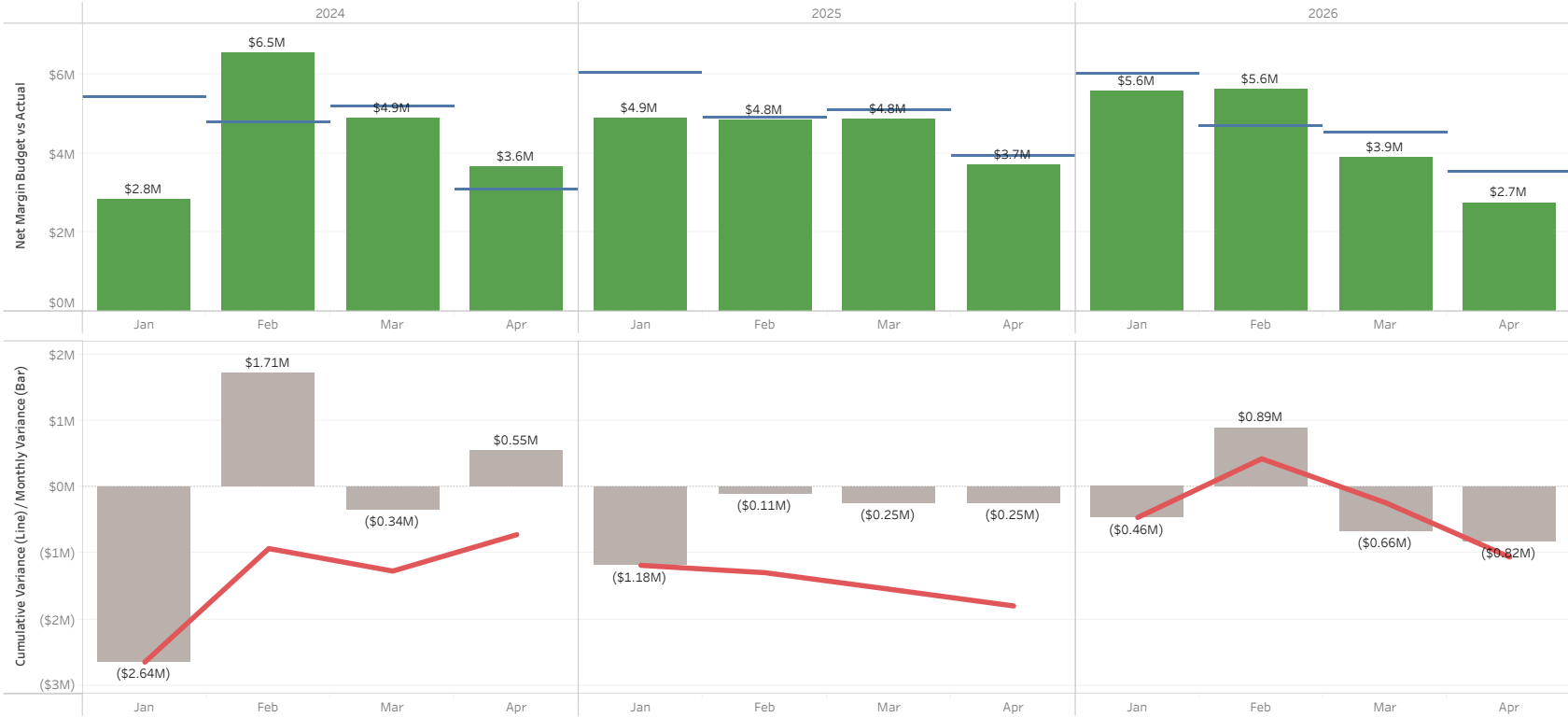
Cumulative Net Margin Original Budget vs Actuals

Filter Date Year
Multiple values

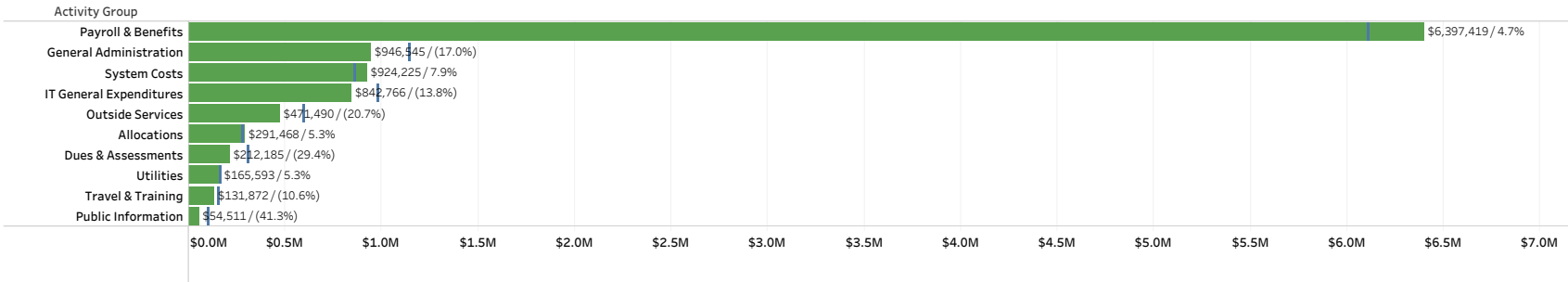
Filter Date Month Abbrev
Multiple values

Legend
■ Actual
■ Budget
■ Favorable/ (Unfavorable)
■ Cumulative Variance

Pension Entry
Financials w/o Pension Entry



2026 Top 10 YTD O&M Actuals & Original Budget by Activity Group Through April



Enter Year
2026

Select Month
April

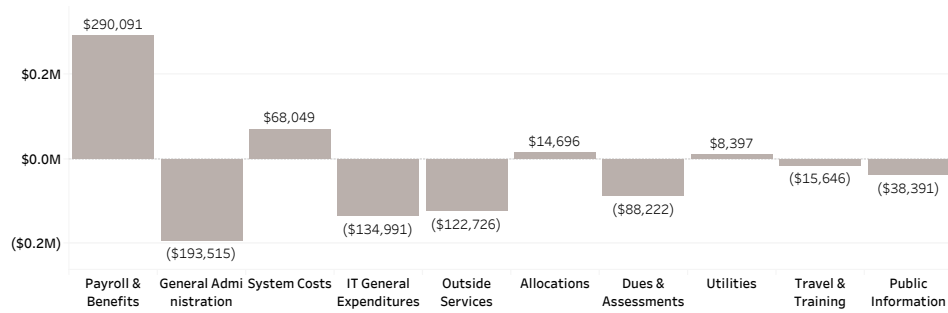
Top N - Activity Category
10

Dept #
All

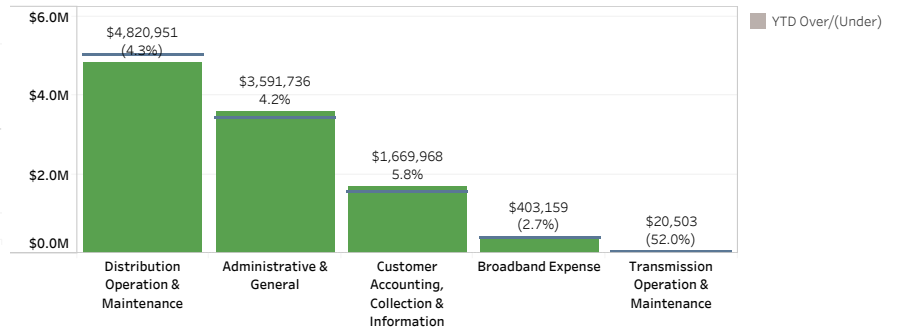
Budget Version
 Actuals
 Amended Budget
 Original Budget

Pension Entry
Financials w/o Pension En..

2026 Top 10, YTD O&M Budget Variance by Activity Group Through April



2026 YTD O&M Actuals & Original Budget by Financial Statement Group Through April

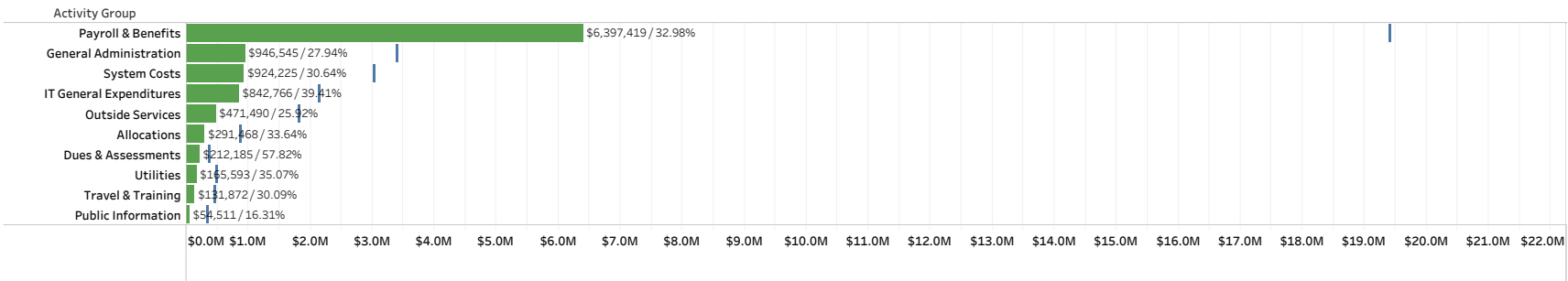


Legend

- YTD Budget
- YTD Actuals
- YTD Over/(Under)

2026 Top 10 YTD O&M Actuals & Original Budget by Activity Group Through April

% of Year: 33.33%



Enter Year
2026

Select Month
April

Top N - Activity Category
10

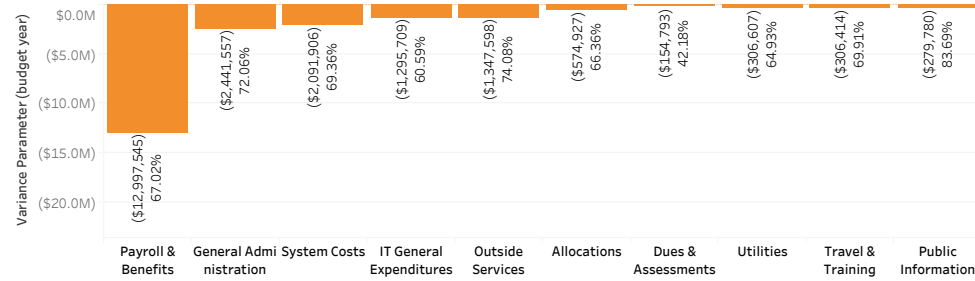
Dept #
All

Budget Version
 Actuals
 Amended Budget
 Original Budget

Pension Entry
Financials w/o Pension Ent..

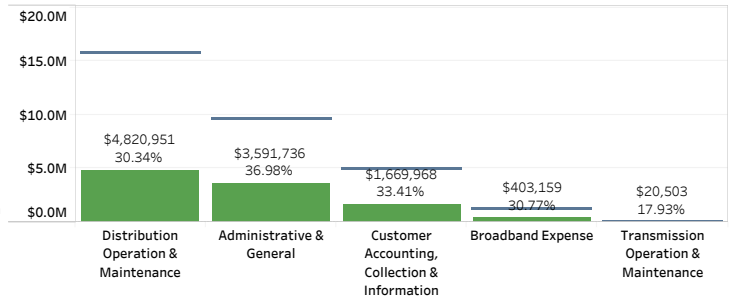
2026 Top 10, Remaining Budget Amount by Activity Group through April

% of Year Remaining: 66.67%



2026 YTD O&M Actuals & Original Budget by Financial Statement Group Through April

% of Year: 33.33%



Legend

- Budget
- YTD Actuals
- Remaining Budget

Capital Drill Down with 2026 Actuals & Original Budget

% of Year: 33.3%

Category	Group	Actual Amount	Budget Amount	Variance	% of Budget
Transmission	Transmission Projects	\$2,908,597	\$4,253,623	(\$1,345,026)	68.38%
Distribution	Capacity & Reliability	\$634,783	\$3,580,305	(\$2,945,523)	17.73%
	Customer Growth	\$3,953,173	\$11,211,416	(\$7,258,243)	35.26%
	General Plant	\$212,884	\$733,040	(\$520,156)	29.04%
	Other	\$42,338	\$1,389,214	(\$1,346,876)	3.05%
	Repair & Replace	\$667,237	\$3,599,065	(\$2,931,827)	18.54%
Broadband	Broadband	\$176,430	\$1,445,307	(\$1,268,877)	12.21%
General Plant	General Plant	\$71,322	\$519,600	(\$448,278)	13.73%
	Transportation	\$101,886	\$610,000	(\$508,114)	16.70%
Information Technology	Information Technology	\$597,561	\$4,472,100	(\$3,874,539)	13.36%
Other	Other	\$3,303		\$3,303	
Grand Total		\$9,369,514	\$31,813,669	(\$22,444,155)	29.45%

Select Year

2026

Select Month(s)

- Jan
- Feb
- Mar
- Apr
- May
- Jun
- Jul
- Aug
- Sep
- Oct
- Nov
- Dec
- Budget

Budget Version

- Actuals
- Amended Budget
- Original Budget

Pension Entry

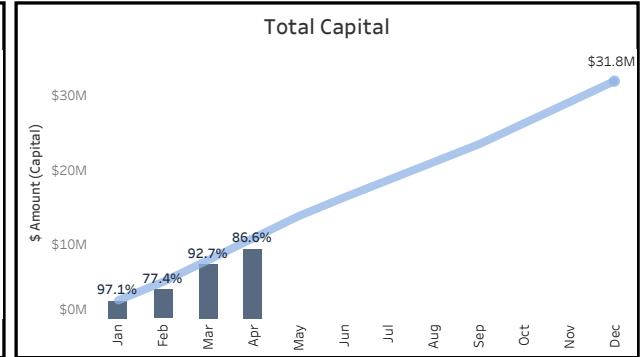
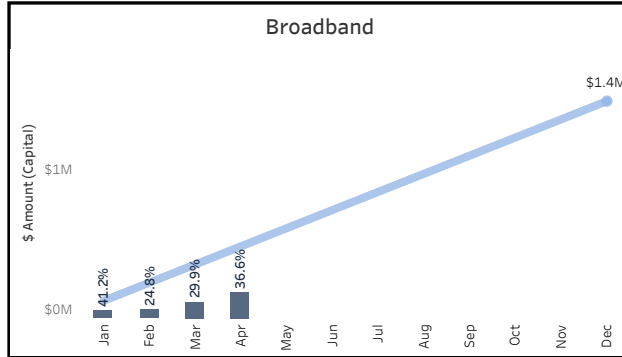
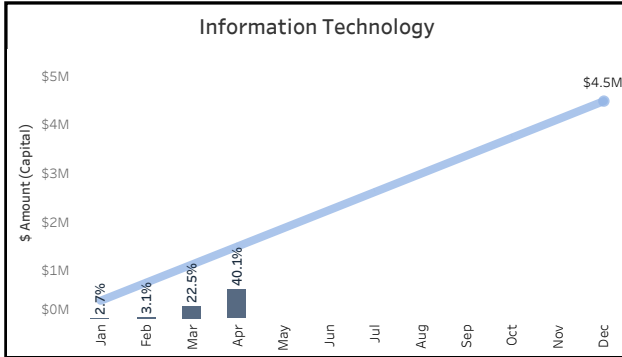
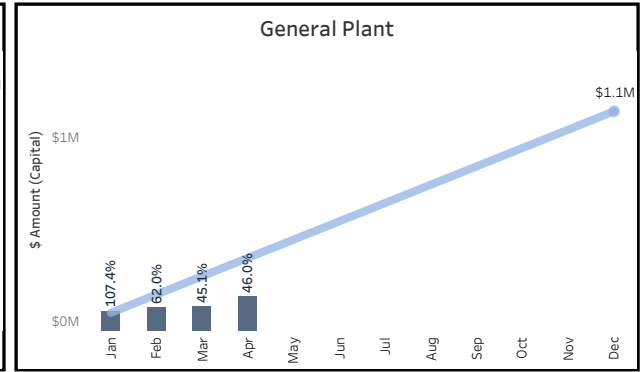
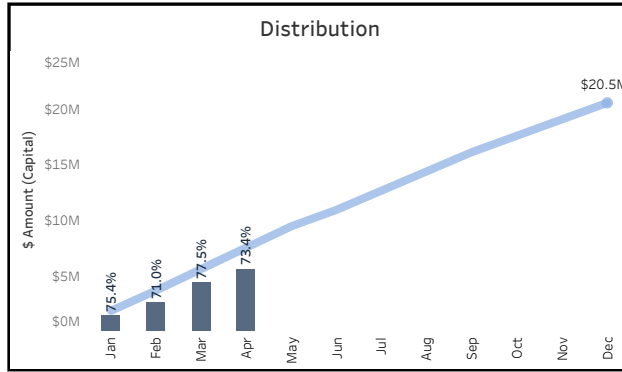
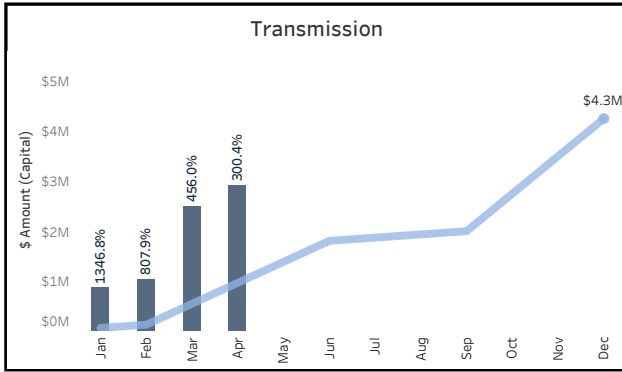
Financials w/o Pension Entry

2026 Capital Execution by Category through April

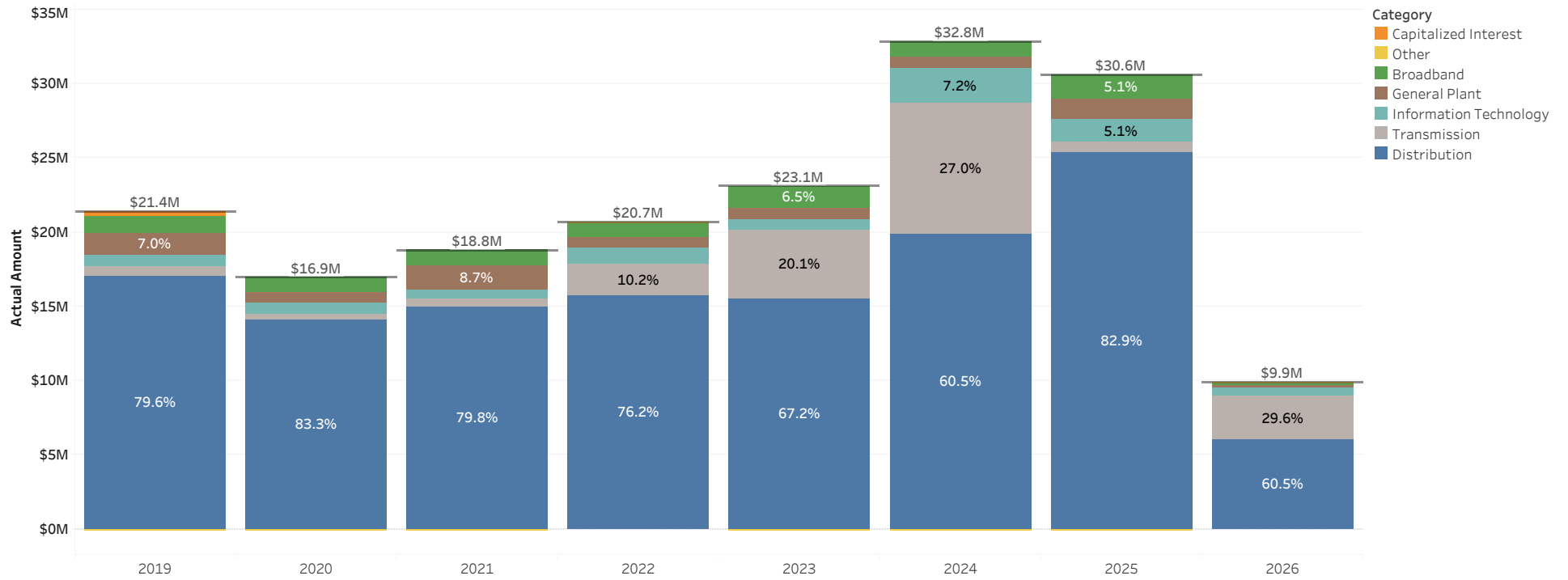
Enter Year
2026

Select Month
April

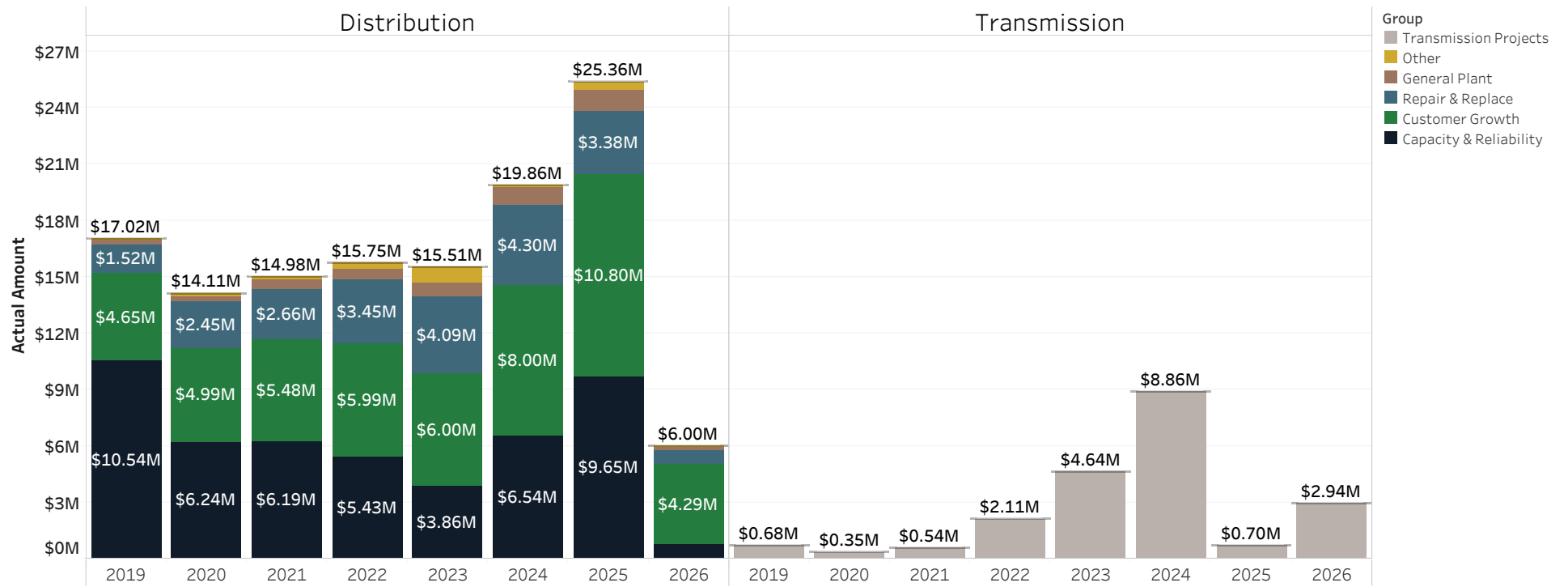
Measure Names
■ Running Capital Budget Amount
■ Running Capital Actual Amount



Gross Capital Expenditures by Category (Actuals)



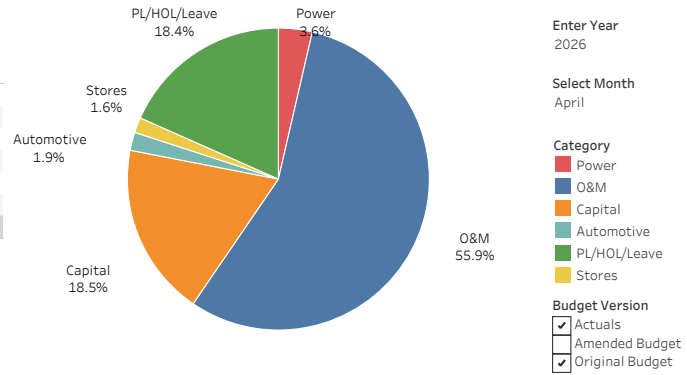
Gross Capital Expenditures by Group (Actuals)



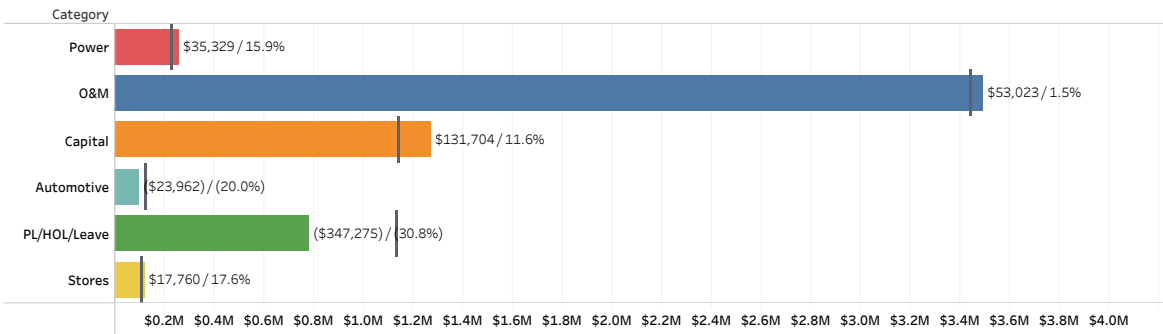
YTD April 2026 Labor by Category: (Activity 11)
Actuals & Original Budget

Category	Current Year Actuals	Current Year Budget	Over / (Under)	Current Year % Variance	Prior Year Actual	Prior Year Variance	Prior Year % Variance
Power	\$257,243	\$221,914	\$35,329	15.9%	\$223,503	\$33,740	15.1%
O&M	\$3,493,232	\$3,440,209	\$53,023	1.5%	\$3,336,434	\$156,798	4.7%
Capital	\$1,269,608	\$1,137,904	\$131,704	11.6%	\$1,257,576	\$12,033	1.0%
Automotive	\$95,813	\$119,775	(\$23,962)	(20.0%)	\$111,763	(\$15,950)	(14.3%)
PL/HOL/Leave	\$781,525	\$1,128,800	(\$347,275)	(30.8%)	\$730,842	\$50,683	6.9%
Stores	\$118,383	\$100,623	\$17,760	17.6%	\$106,956	\$11,426	10.7%
Grand Total	\$6,080,698	\$6,149,224	(\$68,526)	(1.1%)	\$5,767,074	\$313,625	5.4%

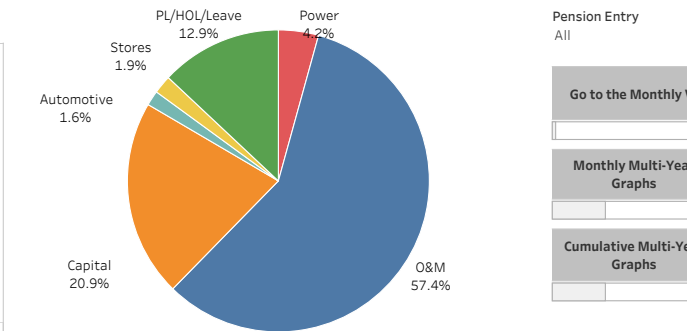
YTD April 2026 Budget: (Activity 11)



YTD April 2026 Labor by Category: (Activity 11)
(Amount displayed is actuals minus budget / % variance from budget)



YTD April 2026 Actuals: (Activity 11)

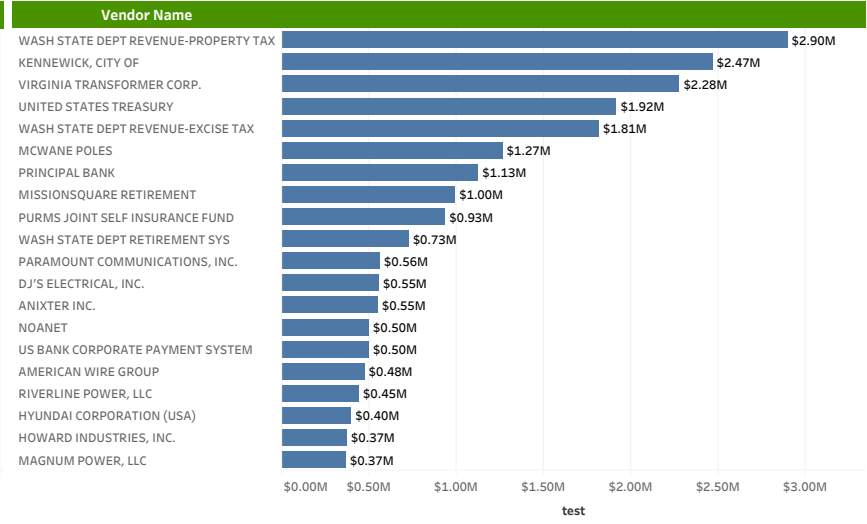
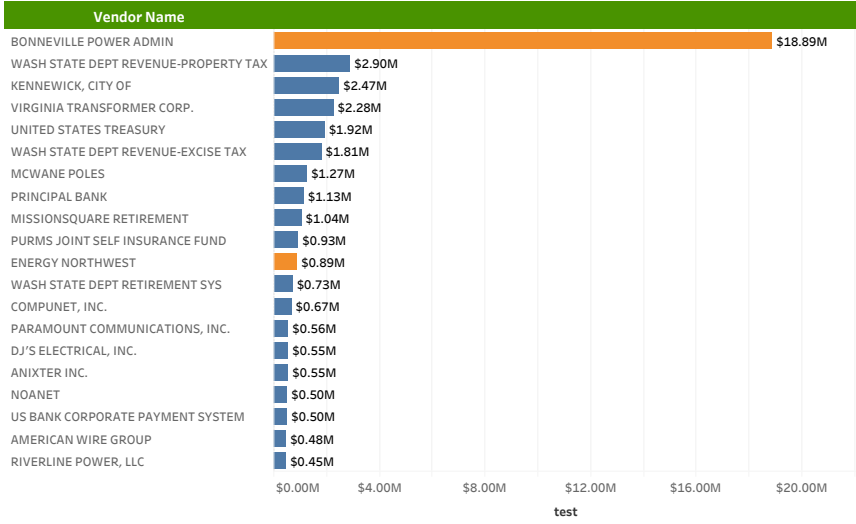


District Top 20 Vendors - 2026 YTD
(Including Power Transactions)

District Top 20 Vendors - 2026 YTD
(Excluding Power Transactions)

Year
2026

Top N Vendor
20



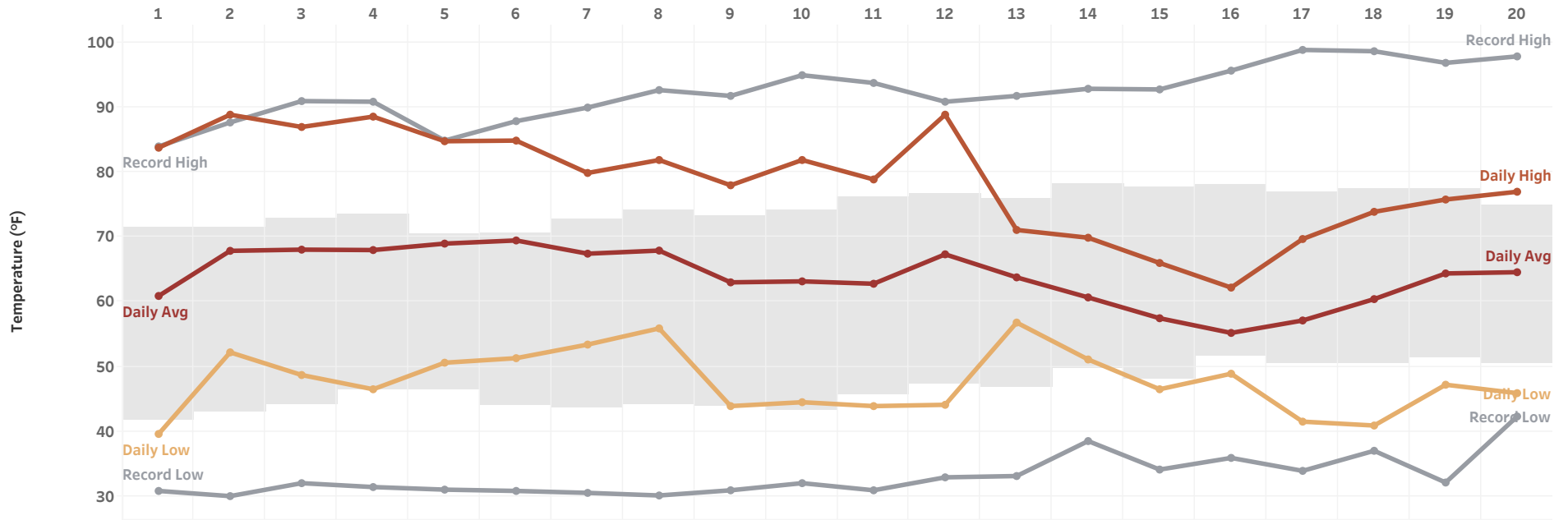
Daily Temperature

Daily temperatures at Tri-Cities Airport with [daily averages & records from 2000-2024](#)

Month
All

Month Year
May 2026


May 2026



	1	2	3	4	5	6	7	8	9	10	11	12	13	14	15	16	17	18	19	20
Record High	84.0	87.7	91.0	90.9	84.9	87.9	90.0	92.7	91.8	95.0	93.8	90.9	91.8	92.9	92.8	95.7	98.9	98.7	96.9	97.9
Avg High	71.5	71.5	72.9	73.5	70.4	70.6	72.7	74.2	73.2	74.1	76.1	76.7	76.0	78.2	77.8	78.1	76.8	77.4	77.4	74.9
Daily High	83.8	88.9	87.0	88.6	84.8	84.9	79.9	81.9	78.0	81.9	78.9	88.9	71.1	69.9	66.0	62.2	69.7	73.9	75.8	77.0
Daily Avg	60.9	67.9	68.1	68.0	69.0	69.5	67.4	67.9	63.0	63.2	62.8	67.3	63.8	60.7	57.5	55.2	57.1	60.4	64.4	64.6
Daily Low	39.6	52.2	48.7	46.5	50.6	51.3	53.4	55.9	43.9	44.5	43.9	44.1	56.8	51.1	46.5	48.9	41.5	40.9	47.2	45.9
Avg Low	41.7	43.0	44.3	46.3	46.3	44.0	43.7	44.2	43.8	43.3	45.7	47.2	46.8	49.7	48.1	51.7	50.5	50.4	51.4	50.4
Record Low	30.8	30.0	32.0	31.4	31.0	30.8	30.5	30.1	30.9	32.0	30.9	32.9	33.1	38.5	34.1	35.9	33.9	37.0	32.1	42.3

Hourly Temperature

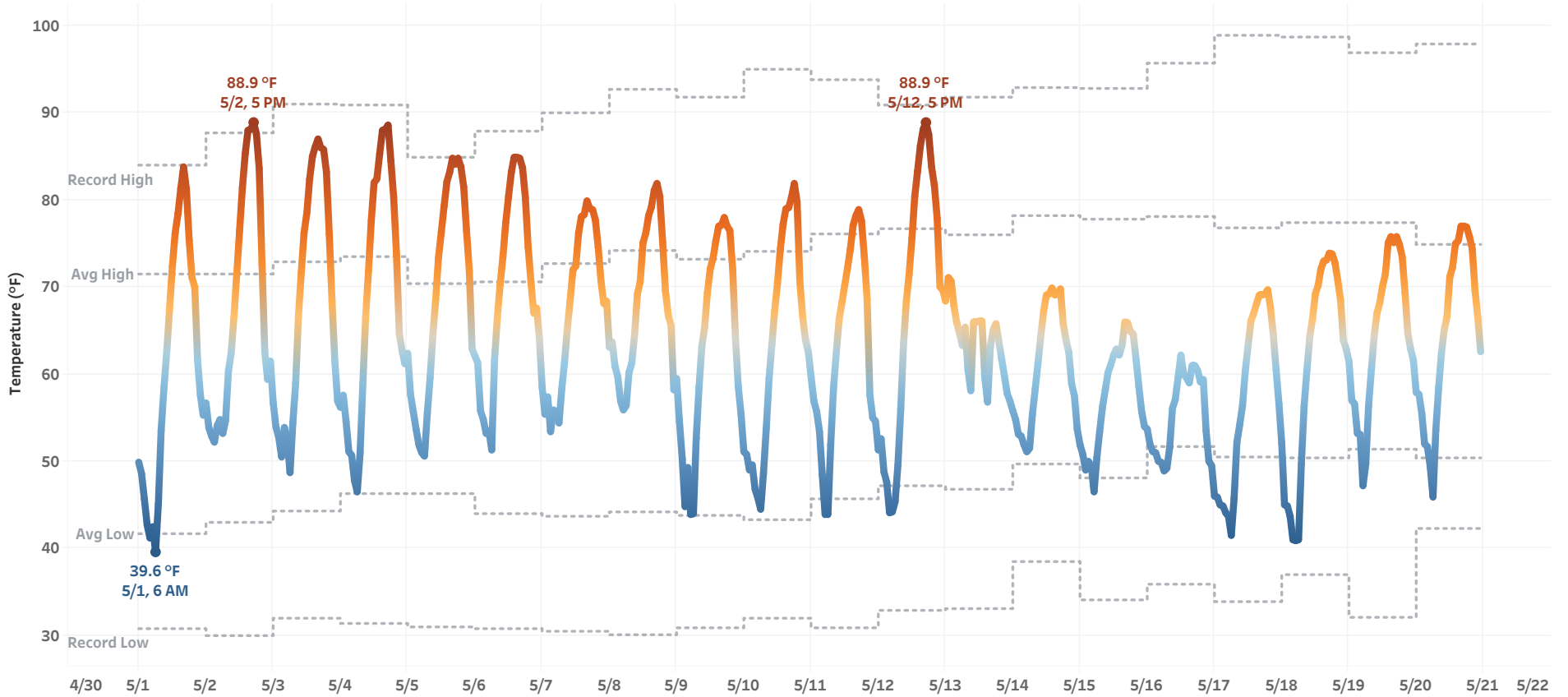
Hourly temperatures at Tri-Cities Airport with daily averages & records from 2000-2024

Hourly Temperature (°F)
40  89

Month
All

Month Year
May 2026

May 2026



Revenue Class Hourly Demand

By Year for Revenue Class: **All** in Month: **May**

Select filters: Year: All Month: May

Billed Revenue Class

- In
- Out

Revenue Class

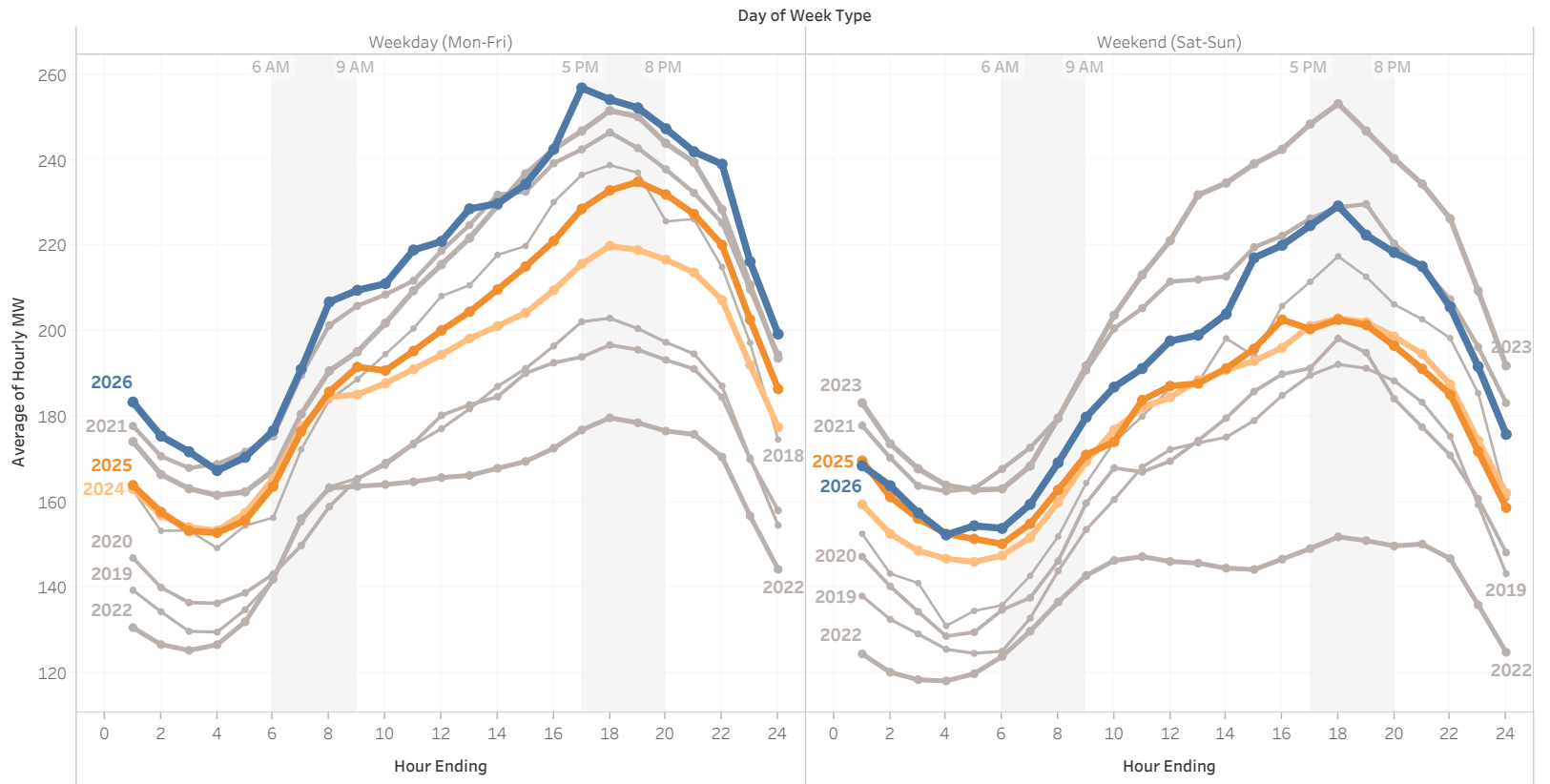
- Residential
- Small General
- Medium General
- Large General
- Large Industrial
- Large Irrigation
- Small Irrigation

Year of Date

- 2026
- 2025
- 2024
- 2023
- 2022
- 2021
- 2020
- 2019
- 2018

AMI data updated through:

Tue, May 19, 2026



Revenue Class Hourly Demand

By Year for Revenue Class: **Residential** in Month: **May**

Select filters:

Year: All
Month: May

Billed Revenue Class

- In
- Out

Revenue Class

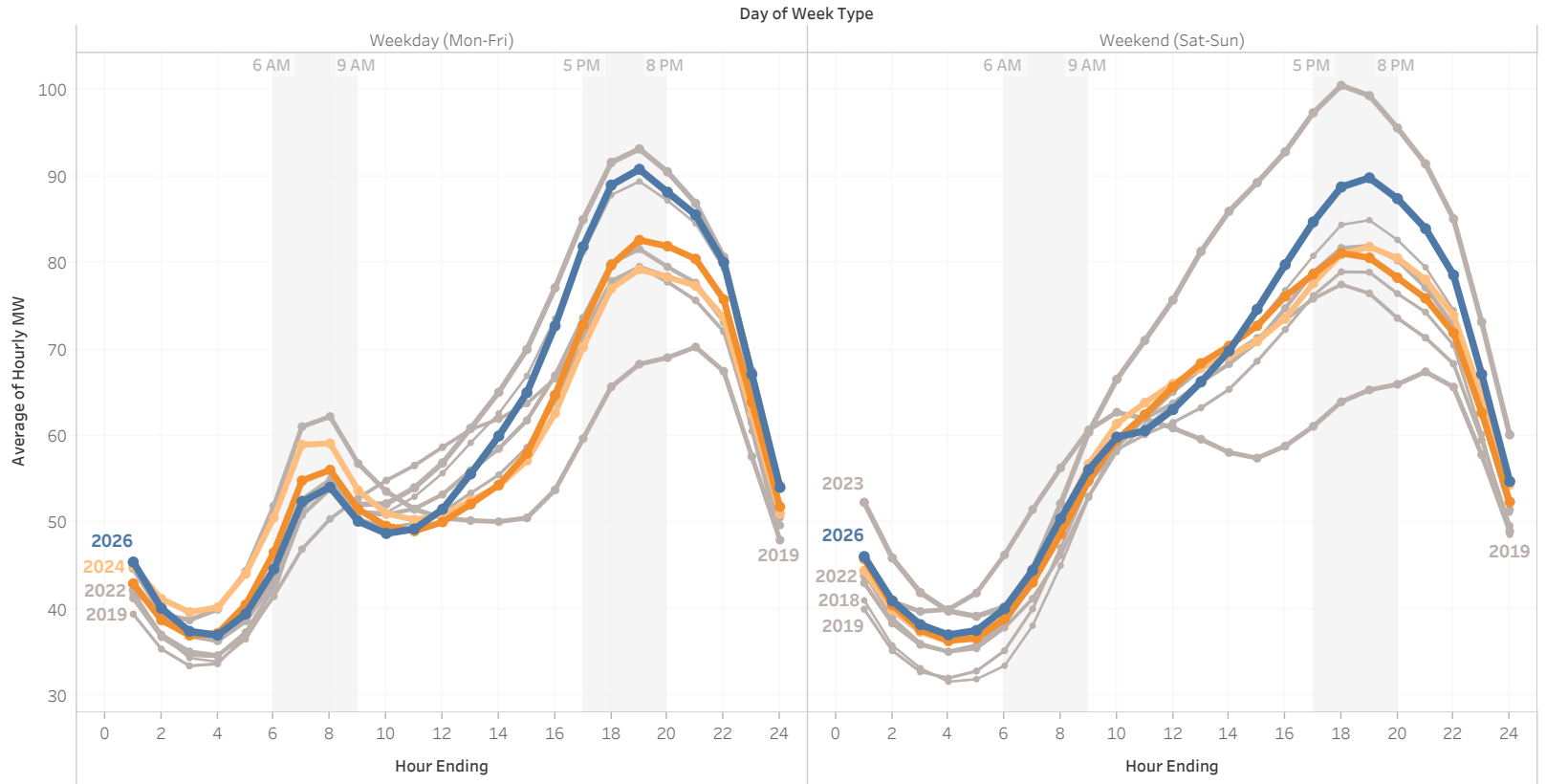
- Residential
- Small General
- Medium General
- Large General
- Large Industrial
- Large Irrigation
- Small Irrigation

Year of Date

- 2026
- 2025
- 2024
- 2023
- 2022
- 2021
- 2020
- 2019
- 2018

AMI data updated through:

Tue, May 19, 2026



Revenue Class Hourly Demand

By Year for Revenue Class: **Small General, Medium General, Large General** in Month: **May**

Select filters:
 Year: All
 Month: May

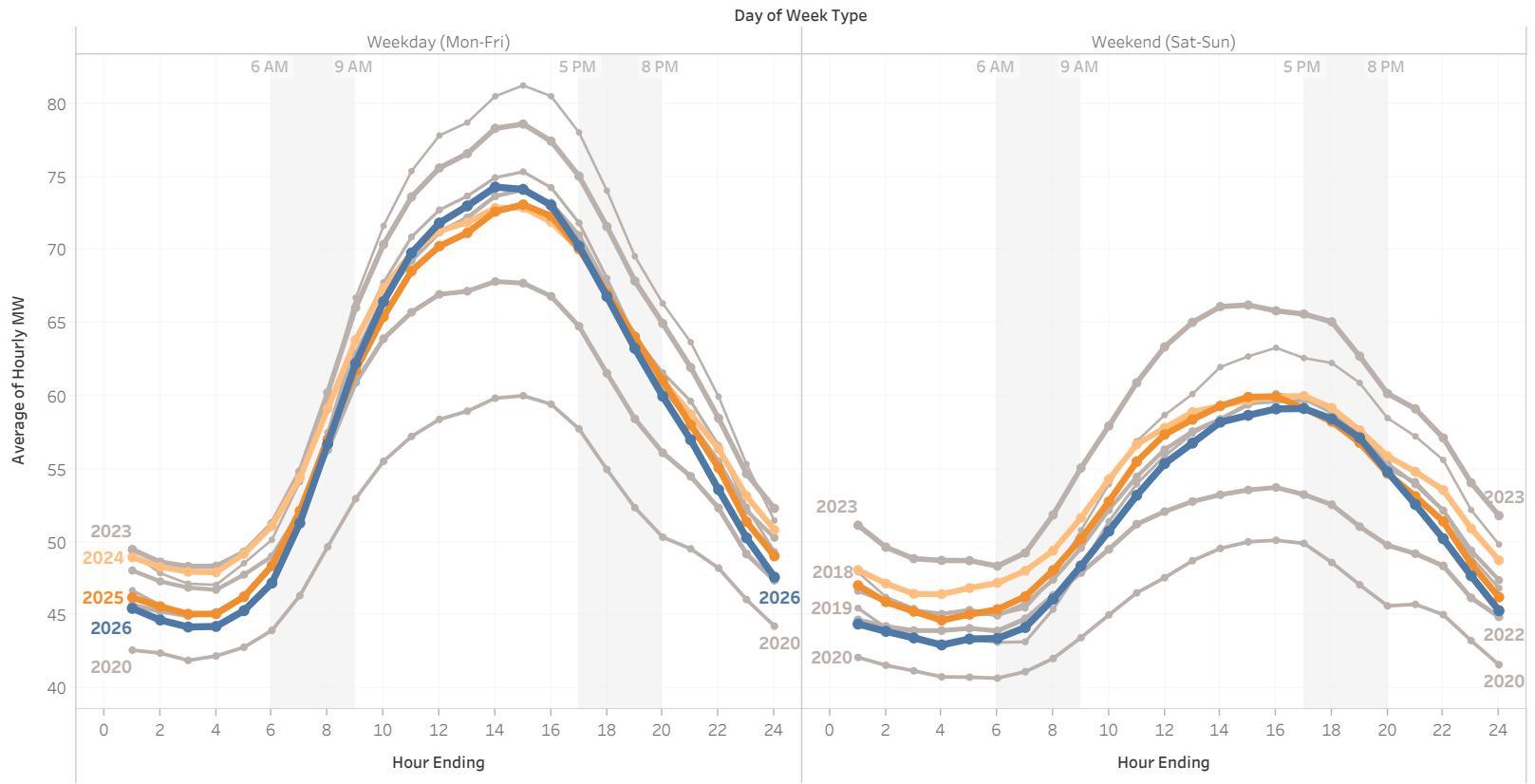
Billed Revenue Class
 In
 Out

- Revenue Class
- Residential
 - Small General
 - Medium General
 - Large General
 - Large Industrial
 - Large Irrigation
 - Small Irrigation

- Year of Date
- 2026
 - 2025
 - 2024
 - 2023
 - 2022
 - 2021
 - 2020
 - 2019
 - 2018

AMI data updated through:

Tue, May 19, 2026



Revenue Class Hourly Demand

By Year for Revenue Class: **Large Irrigation** in Month: **May**

Select filters:

Year: All
Month: May

Billed Revenue Class

- In
- Out

Revenue Class

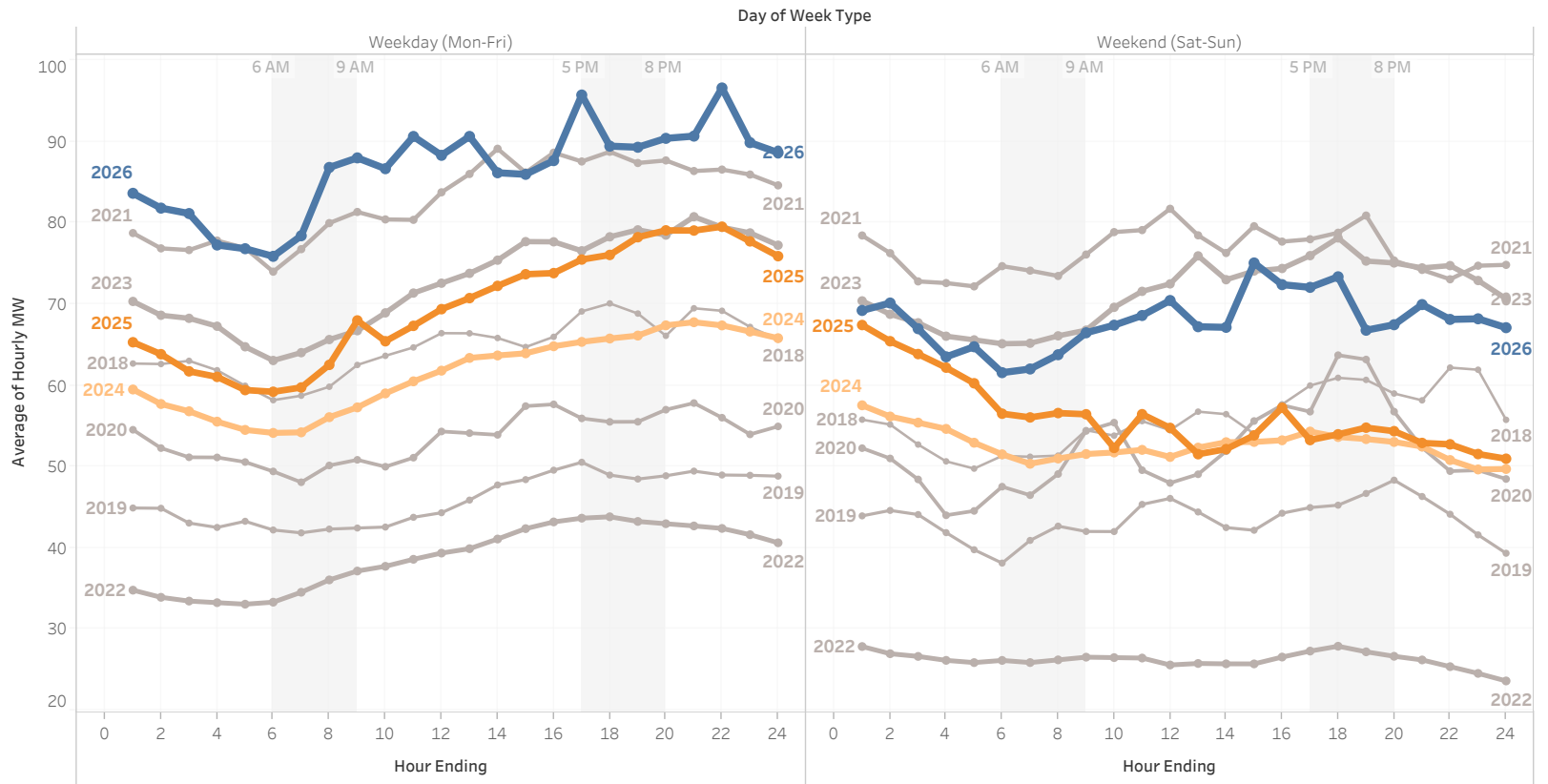
- Residential
- Small General
- Medium General
- Large General
- Large Industrial
- Large Irrigation
- Small Irrigation

Year of Date

- 2026
- 2025
- 2024
- 2023
- 2022
- 2021
- 2020
- 2019
- 2018

AMI data updated through:

Tue, May 19, 2026



Revenue Class Cumulative Energy

By Year for Revenue Class: **All** in Month: **May**

Select filters: Year: All Month: May Month-Day: Multiple values

Billed Revenue Class

- In
- Out

Revenue Class

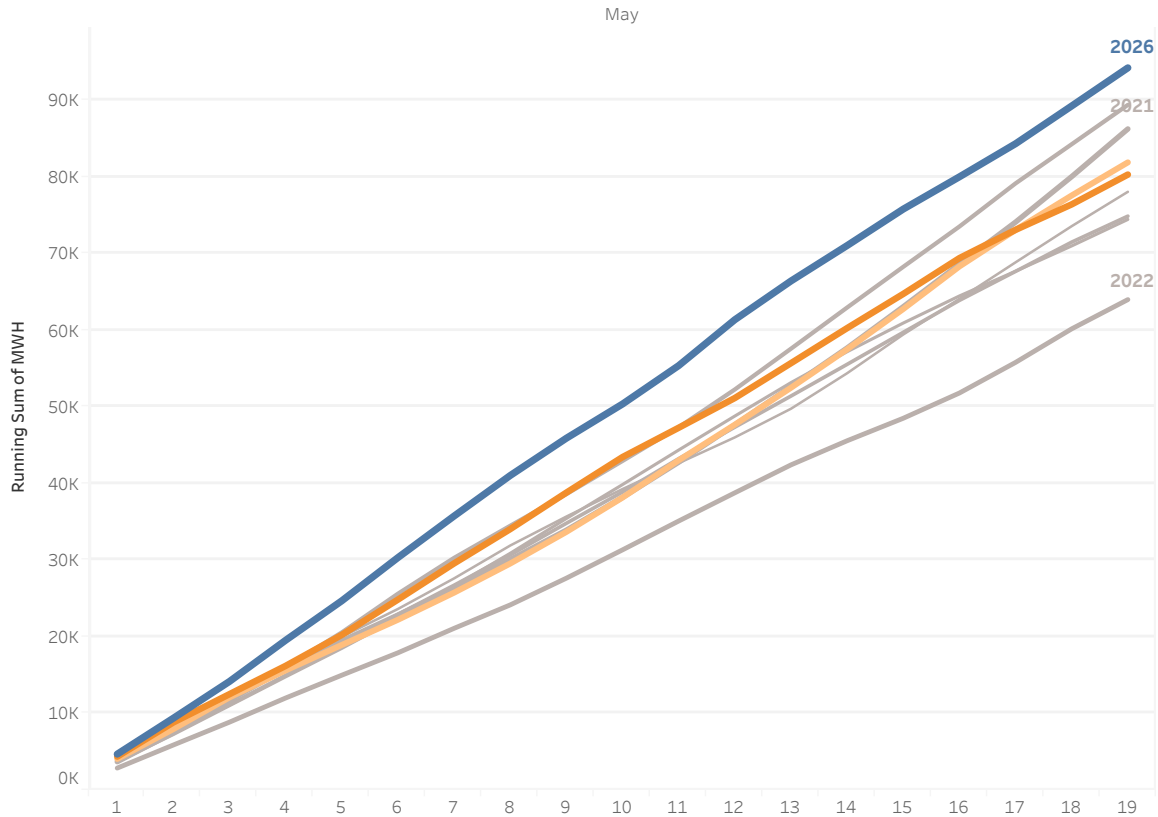
- Residential
- Small General
- Medium General
- Large General
- Large Industrial
- Large Irrigation
- Small Irrigation

Year of Date

- 2026
- 2025
- 2024
- 2023
- 2022
- 2021
- 2020
- 2019
- 2018

AMI data updated through:

Tue, May 19, 2026



Year Over Year Summary:
(hover to highlight year)

Year of Date	MWH	MWH Difference	% Difference
2018	78,077		
2019	74,469	-3,608	-4.62%
2020	74,898	429	0.58%
2021	89,421	14,524	19.39%
2022	64,005	-25,416	-28.42%
2023	86,283	22,278	34.81%
2024	81,916	-4,367	-5.06%
2025	80,324	-1,593	-1.94%
2026	94,256	13,933	17.35%

Note:
Totals do not include
non-AMI meter readings.

Revenue Class Cumulative Energy

By Year for Revenue Class: **Residential** in Month: **May**

Select filters:

Year
All

Month
May

Month-Day
Multiple values

Billed Revenue Class

- In
- Out

Revenue Class

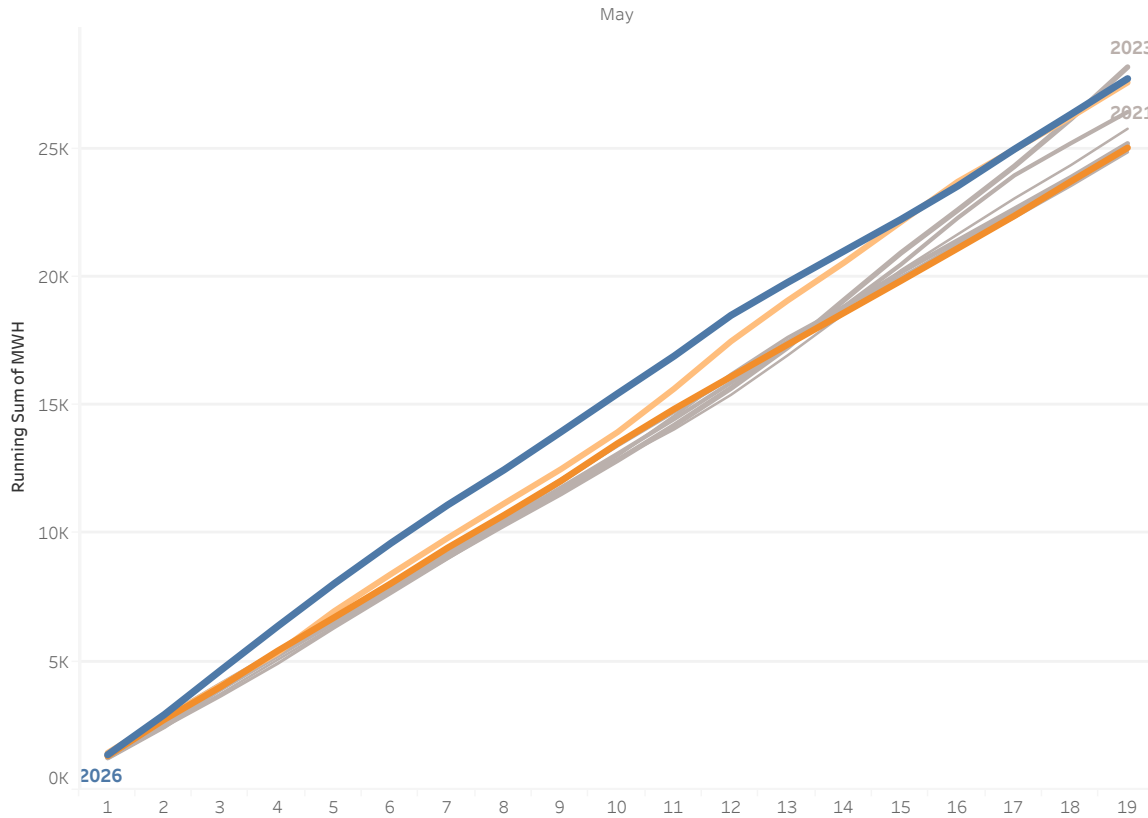
- Residential
- Small General
- Medium General
- Large General
- Large Industrial
- Large Irrigation
- Small Irrigation

Year of Date

- 2026
- 2025
- 2024
- 2023
- 2022
- 2021
- 2020
- 2019
- 2018

AMI data updated through:

Tue, May 19, 2026



Year Over Year Summary:
(hover to highlight year)

Year of Date	MWH	MWH Difference	% Difference
2018	25,770		
2019	24,863	-907	-3.52%
2020	25,133	269	1.08%
2021	26,424	1,292	5.14%
2022	25,195	-1,229	-4.65%
2023	28,176	2,981	11.83%
2024	27,573	-604	-2.14%
2025	25,028	-2,544	-9.23%
2026	27,721	2,693	10.76%

Note:
Totals do not include
non-AMI meter readings.

Revenue Class Cumulative Energy

By Year for Revenue Class: **Small General, Medium General, Large General** in Month: **May**

Select filters:

Year
All

Month
May

Month-Day
Multiple values

Billed Revenue Class

- In
- Out

Revenue Class

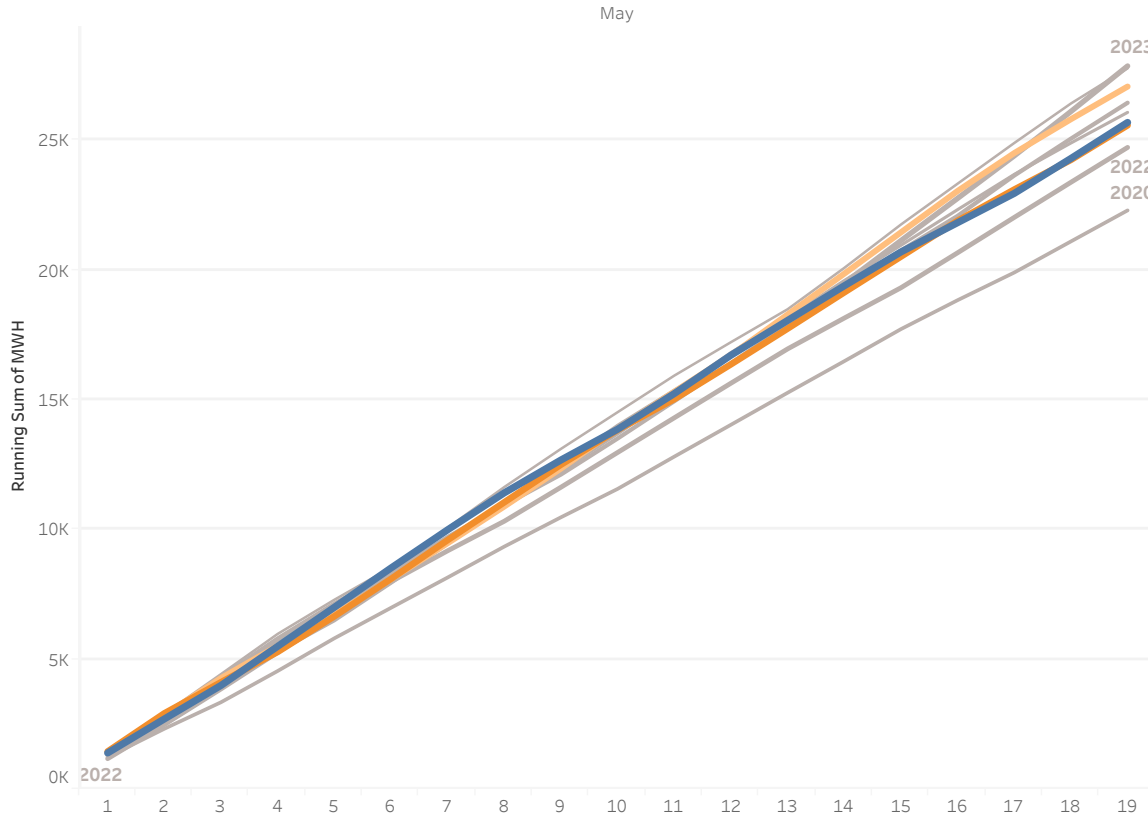
- Residential
- Small General
- Medium General
- Large General
- Large Industrial
- Large Irrigation
- Small Irrigation

Year of Date

- 2026
- 2025
- 2024
- 2023
- 2022
- 2021
- 2020
- 2019
- 2018

AMI data updated through:

Tue, May 19, 2026



Year Over Year Summary:
(hover to highlight year)

Year of Date	MWH	MWH Difference	% Difference
2018	27,758		
2019	26,060	-1,698	-6.12%
2020	22,286	-3,774	-14.48%
2021	26,431	4,145	18.60%
2022	24,711	-1,720	-6.51%
2023	27,846	3,135	12.69%
2024	27,055	-791	-2.84%
2025	25,562	-1,493	-5.52%
2026	25,673	111	0.43%

Note:
Totals do not include
non-AMI meter readings.

Revenue Class Cumulative Energy

By Year for Revenue Class: **Large Irrigation** in Month: **May**

Select filters: Year All Month May Month-Day Multiple values

Billed Revenue Class

- In
- Out

Revenue Class

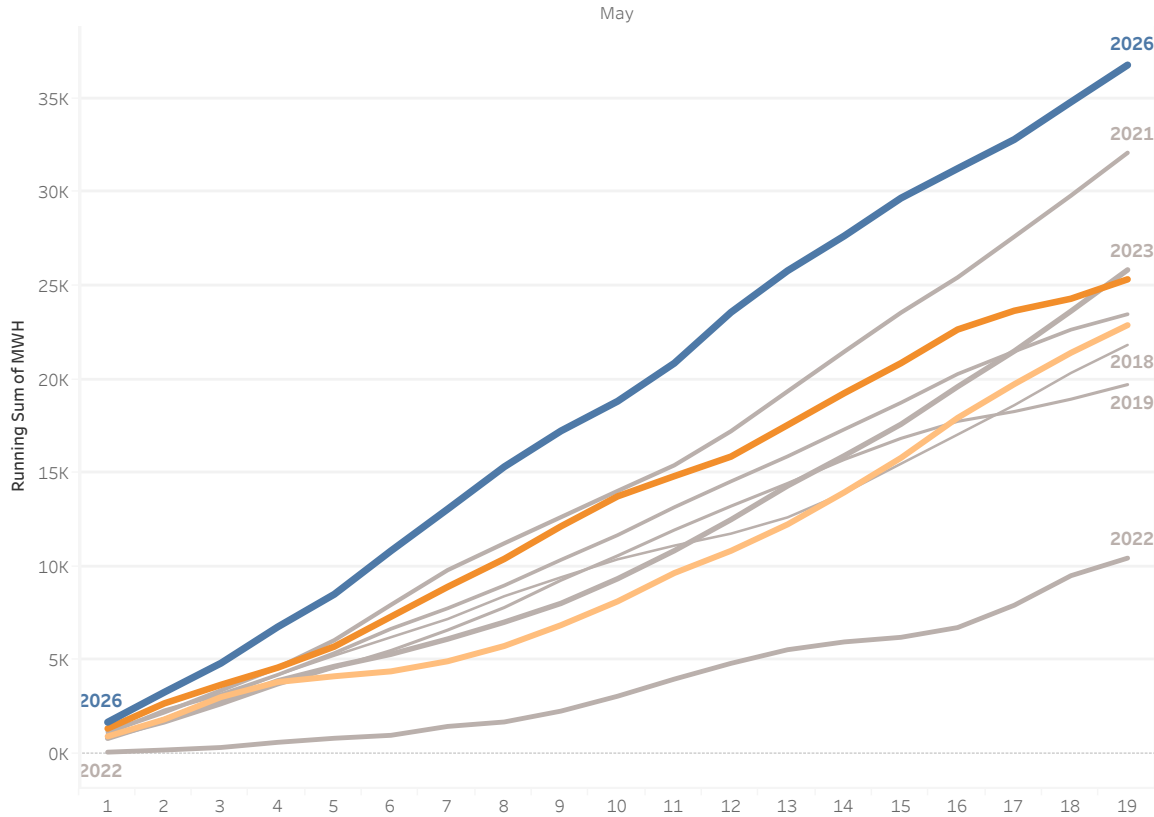
- Residential
- Small General
- Medium General
- Large General
- Large Industrial
- Large Irrigation
- Small Irrigation

Year of Date

- 2026
- 2025
- 2024
- 2023
- 2022
- 2021
- 2020
- 2019
- 2018

AMI data updated through:

Tue, May 19, 2026



Year Over Year Summary:
(hover to highlight year)

Year of Date	MWH	MWH Difference	% Difference
2018	21,833		
2019	19,717	-2,116	-9.69%
2020	23,473	3,756	19.05%
2021	32,087	8,614	36.70%
2022	10,456	-21,631	-67.41%
2023	25,838	15,382	147.12%
2024	22,889	-2,949	-11.41%
2025	25,333	2,444	10.68%
2026	36,770	11,437	45.15%

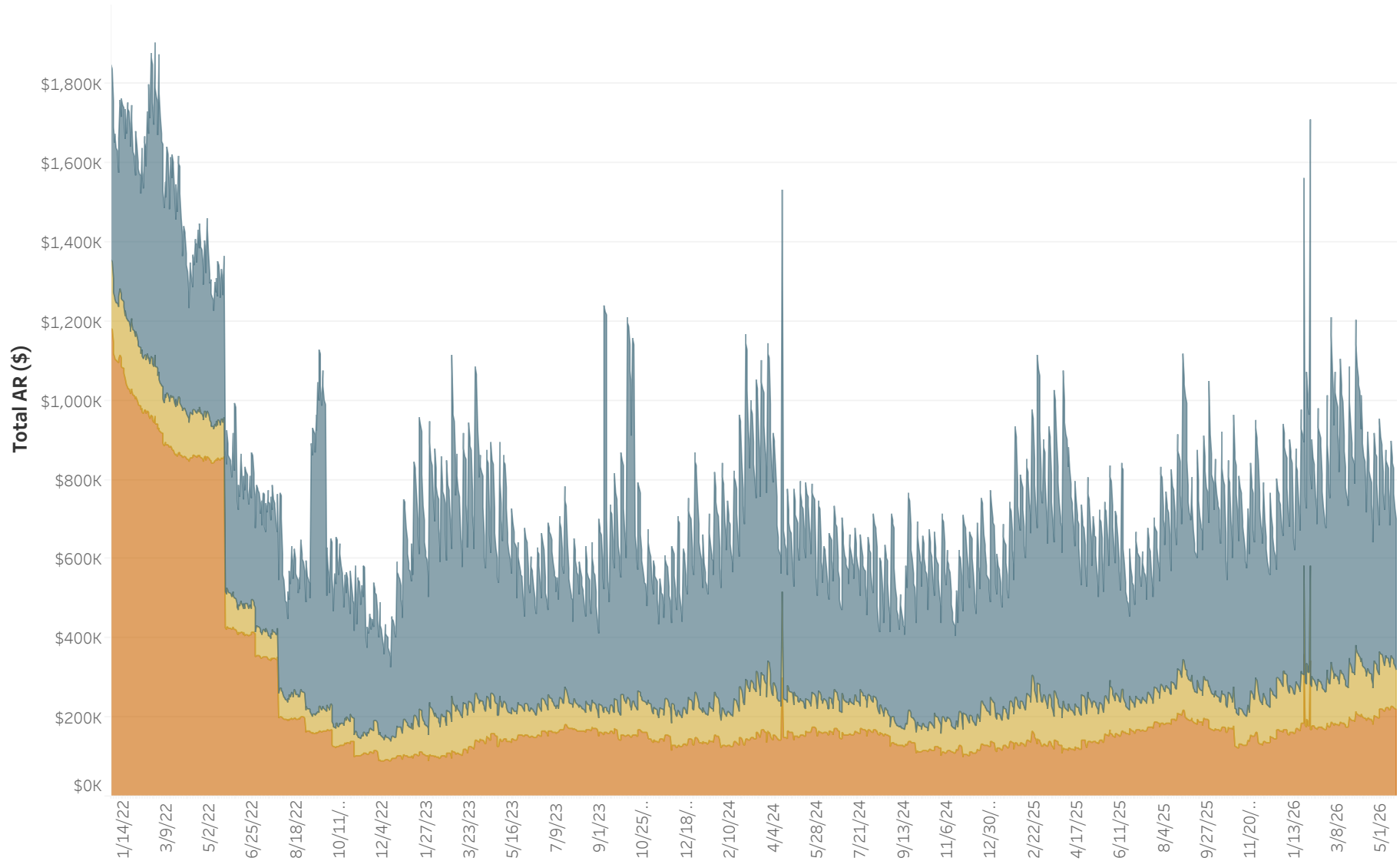
Note:
Totals do not include non-AMI meter readings.

No AMI readings for the pump decks at Spaw, Paterson #1 & #2 and Prior #1 Bay 1 & 2.

Past Due AR in Dollars for Selected Revenue Classes:

All
 Balance Aging: [30 Days](#) | [60 Days](#) | [90+ Days](#)

Consumer Class Selection:	Accounts	Dollars
Regular		
30 Days	2,983	\$378,675
60 Days	742	\$101,495
Revenue Class Selection:		
All		
90+ Days	1,244	\$218,877
Past Due	4,969	\$699,047
Service Status:		
All		
Total AR	55,581	\$5,875,381

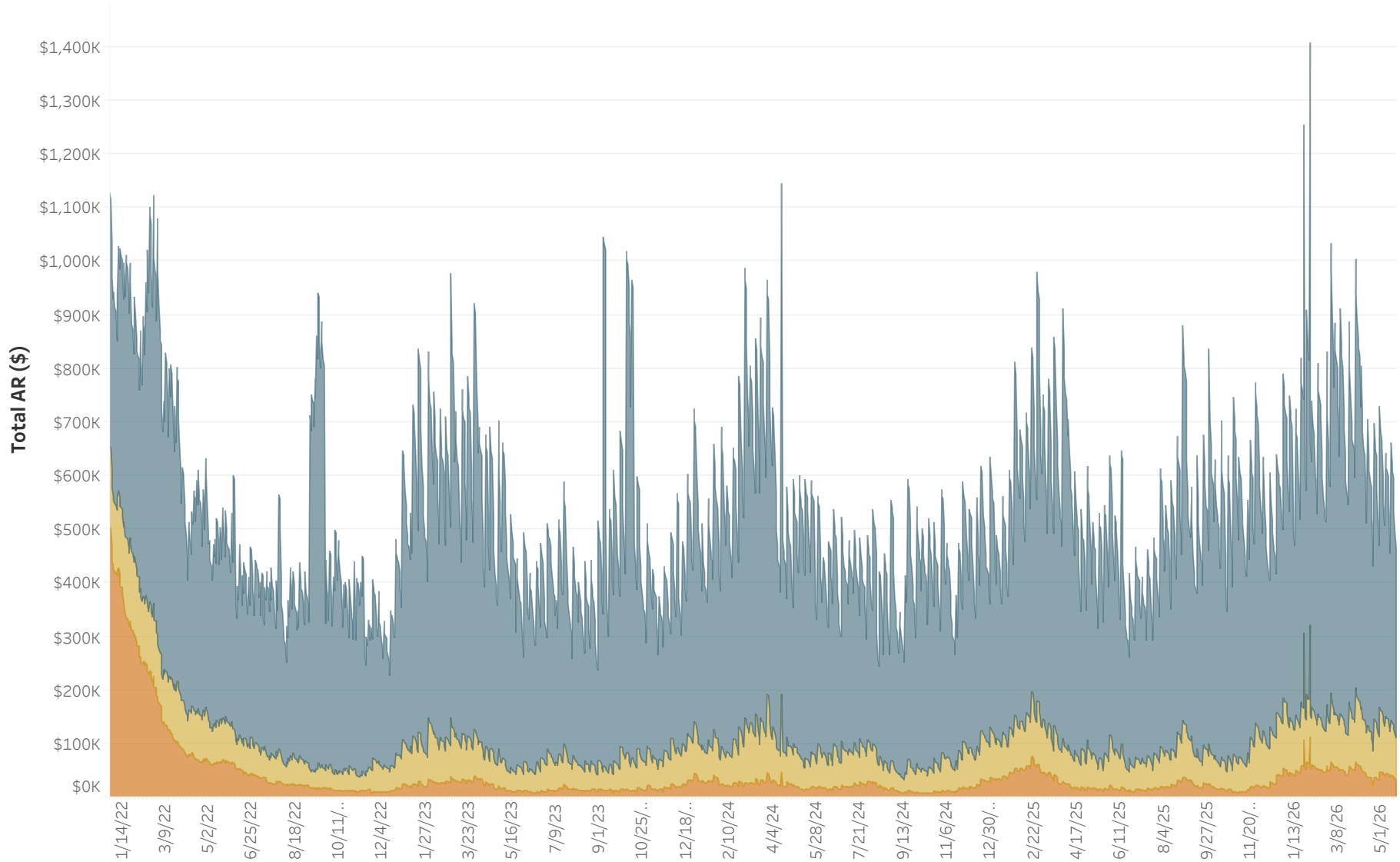


AR data as of 5/21/2026. Data source is AR Balance History Tableau report view.

Past Due AR in Dollars for Selected Revenue Classes:

All
 Balance Aging: **30 Days** | **60 Days** | **90+ Days**

Consumer Class Selection:	Accounts	Dollars
Regular	30 Days 2,813	\$355,235
	60 Days 618	\$77,411
Revenue Class Selection:		
All	90+ Days 282	\$32,486
	Past Due 3,713	\$465,132
Service Status:		
Active	Total AR 53,201	\$5,631,375



AR data as of 5/21/2026. Data source is AR Balance History Tableau report view.

Past Due AR in Dollars for Selected Revenue Classes:

Residential

Balance Aging: 30 Days | 60 Days | 90+ Days

Consumer Class Selection:

Regular

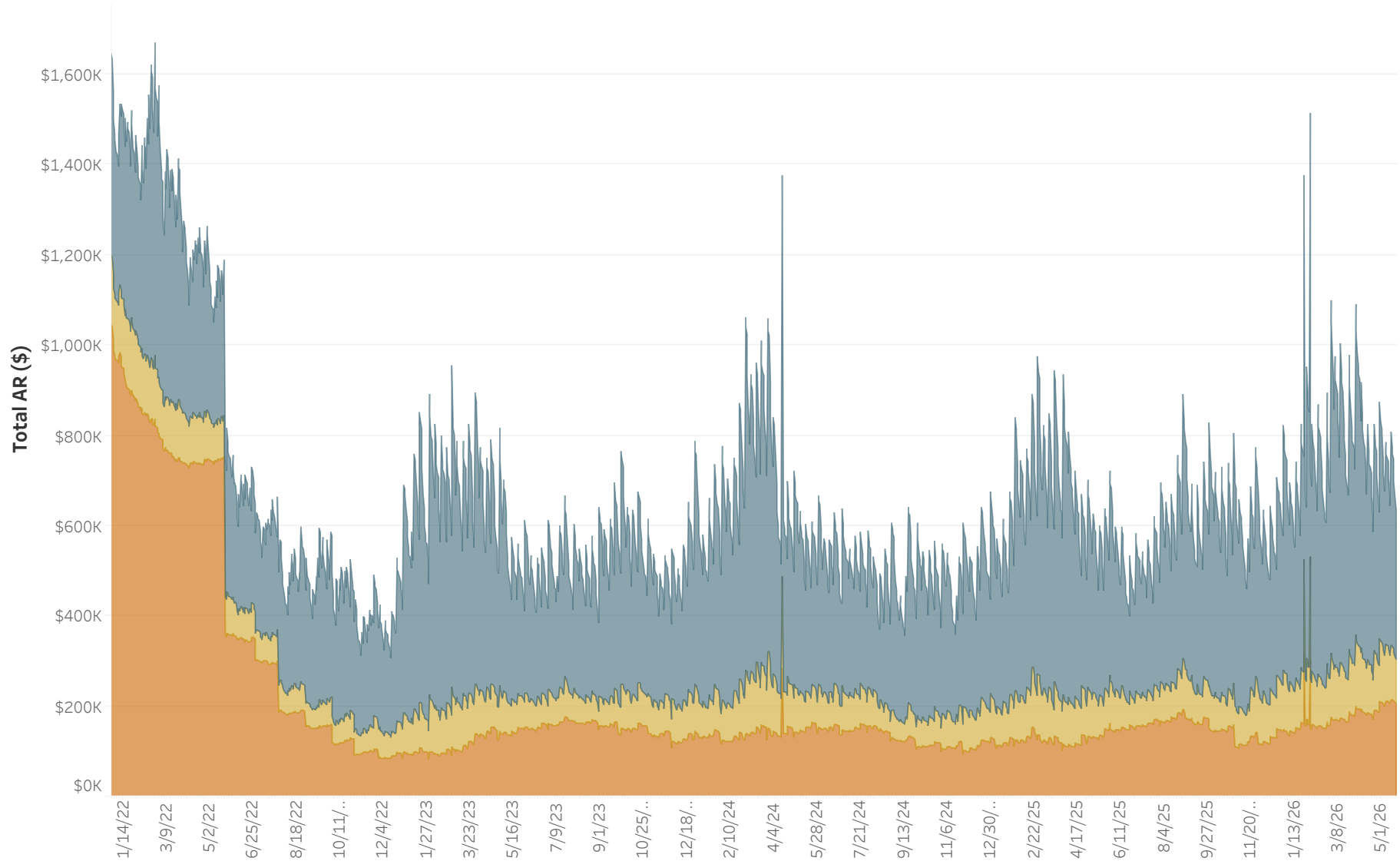
Revenue Class Selection:

Residential

Service Status:

All

	Accounts	Dollars
30 Days	2,630	\$331,391
60 Days	692	\$96,836
90+ Days	1,175	\$206,102
Past Due	4,497	\$634,329
Total AR	46,264	\$2,564,387



AR data as of 5/21/2026. Data source is AR Balance History Tableau report view.

Past Due AR in Dollars for Selected Revenue Classes:

Residential

Balance Aging: [30 Days](#) | [60 Days](#) | [90+ Days](#)

Consumer Class Selection:

Regular

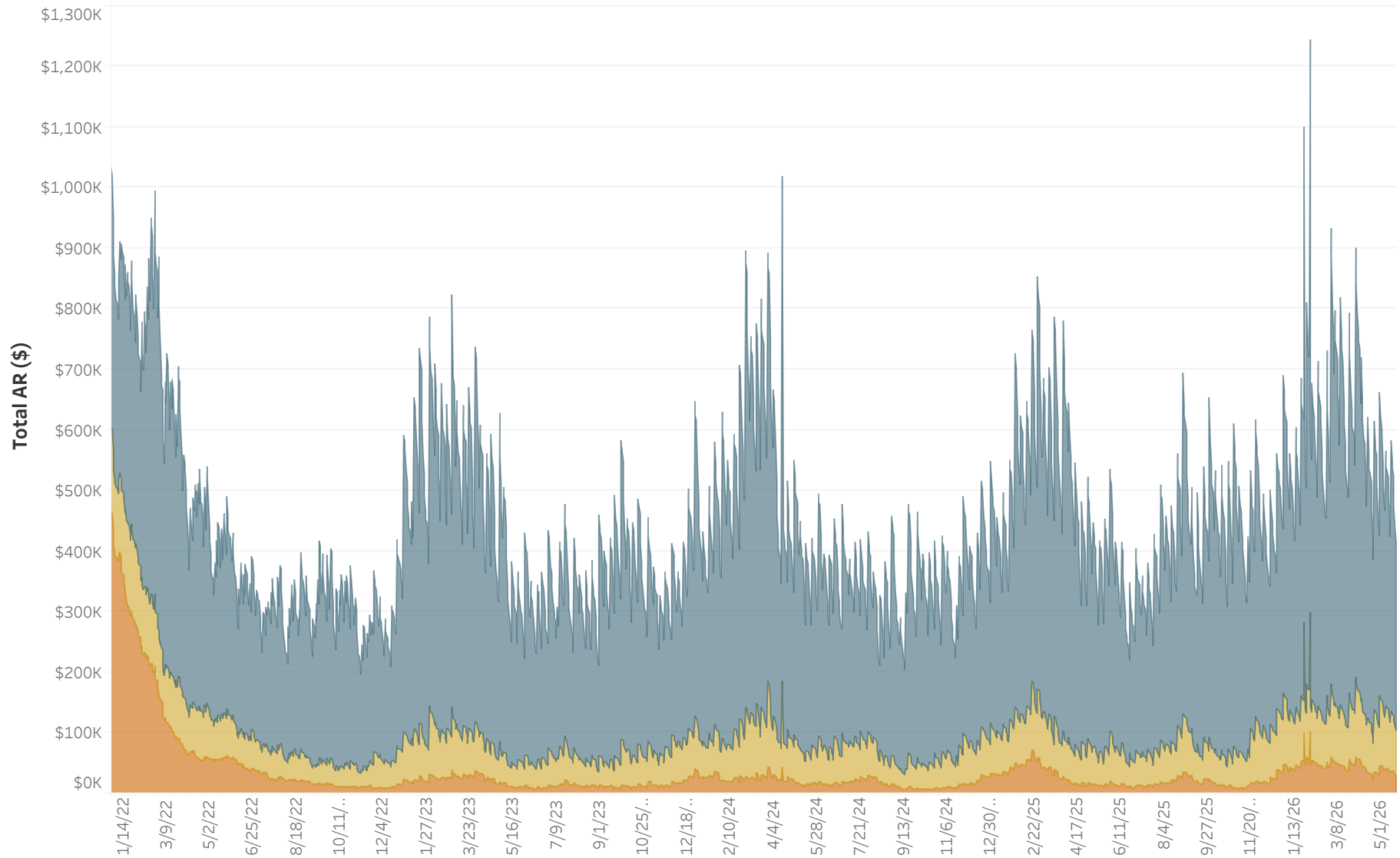
Revenue Class Selection:

Residential

Service Status:

Active

	Accounts	Dollars
30 Days	2,468	\$309,035
60 Days	569	\$73,474
90+ Days	252	\$29,379
Past Due	3,289	\$411,889
Total AR	43,989	\$2,328,280



AR data as of 5/21/2026. Data source is AR Balance History Tableau report view.

Past Due AR in Dollars for Selected Revenue Classes:

Residential

Balance Aging: 30 Days | 60 Days | 90+ Days

Consumer Class Selection:

Regular

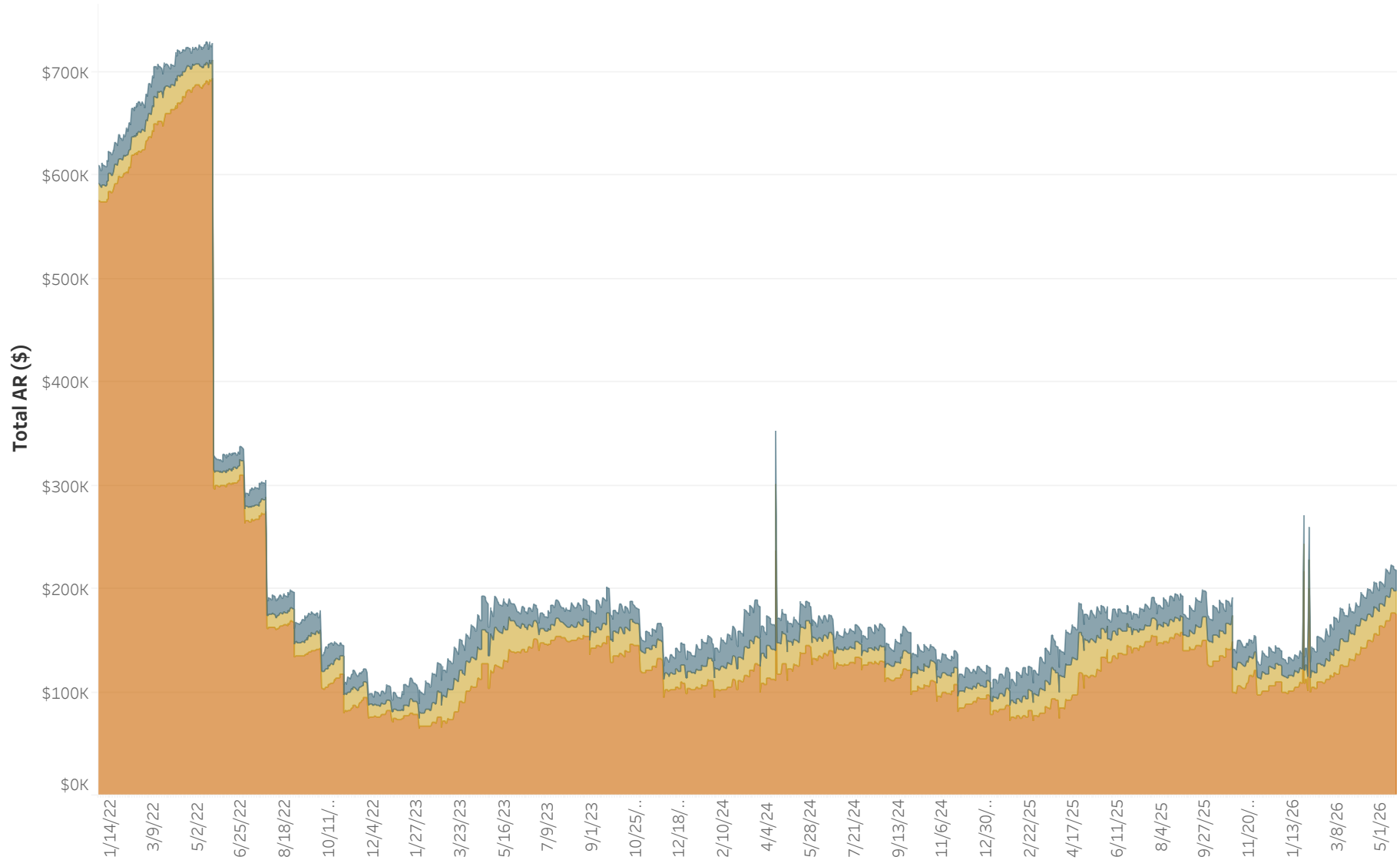
Revenue Class Selection:

Residential

Service Status:

Inactive

	Accounts	Dollars
30 Days	149	\$19,914
60 Days	114	\$21,821
90+ Days	913	\$175,433
Past Due	1,176	\$217,169
Total AR	1,946	\$228,991



AR data as of 5/21/2026. Data source is AR Balance History Tableau report view.