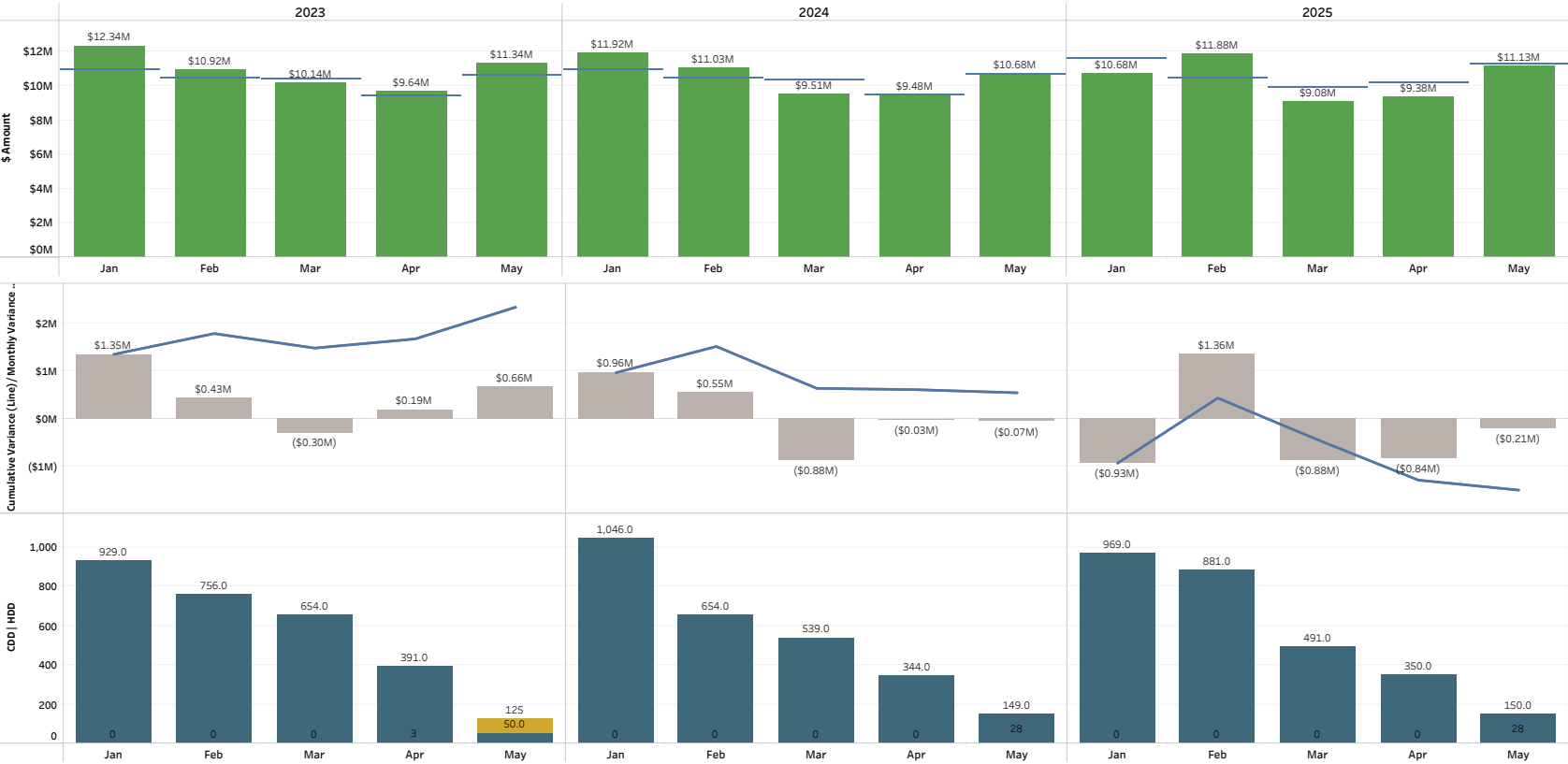


Cumulative Retail Revenue Budget vs Actuals (Original and Amended Budget): [All](#)



Rate Class
All

Filter Date Year
Multiple values

Filter Date Month
Multiple values

Legend

- Budget
- Amended Budget
- Actual
- Cumulative Variance Original
- Cumulative Variance Amended
- Month Over / (Under)
- Heating Degree Days
- Cooling Degree Days

Note: Cumulative budget amendment changes are reflected in the month of September.

Cooling Degree Days (CDD) are a measure of how hot the temperature was on a given day or during a period of days. CDD's quantify the demand for energy needed to cool buildings. The higher the CDD's, the hotter the region is.

Heating Degree Days (HDD) are a measure of how cold the temperature was on a given day or during a period of days. HDD's quantify the demand for energy needed to heat buildings. The higher the HDD's, the colder the region is.

Cumulative Retail Revenue Budget vs Actuals (Original and Amended Budget): [Residential Sales](#)



Rate Class
Residential Sales

Filter Date Year
Multiple values

Filter Date Month
Multiple values

- Legend
- Budget
 - Amended Budget
 - Actual
 - Cumulative Variance Original
 - Cumulative Variance Amended
 - Month Over / (Under)
 - Heating Degree Days
 - Cooling Degree Days

Note: Cumulative budget amendment changes are reflected in the month of September.

Cooling Degree Days (CDD) are a measure of how hot the temperature was on a given day or during a period of days. CDD's quantify the demand for energy needed to cool buildings. The higher the CDD's, the hotter the region is.

Heating Degree Days (HDD) are a measure of how cold the temperature was on a given day or during a period of days. HDD's quantify the demand for energy needed to heat buildings. The higher the HDD's, the colder the region is.

Cumulative Retail Revenue Budget vs Actuals (Original and Amended Budget): Large General Service Sales, Medium General Service Sales, Small General Service Sales



Rate Class
Multiple values

Filter Date Year
Multiple values

Filter Date Month
Multiple values

Legend

- Budget
- Amended Budget
- Actual
- Cumulative Variance Original
- Cumulative Variance Amended
- Month Over / (Under)
- Heating Degree Days
- Cooling Degree Days

Note: Cumulative budget amendment changes are reflected in the month of September.

Cooling Degree Days (CDD) are a measure of how hot the temperature was on a given day or during a period of days. CDD's quantify the demand for energy needed to cool buildings. The higher the CDD's, the hotter the region is.

Heating Degree Days (HDD) are a measure of how cold the temperature was on a given day or during a period of days. HDD's quantify the demand for energy needed to heat buildings. The higher the HDD's, the colder the region is.

Cumulative Retail Revenue Budget vs Actuals (Original and Amended Budget): [Large Irrigation Sales](#)



Rate Class
Large Irrigation Sales

Filter Date Year
Multiple values

Filter Date Month
Multiple values

Legend

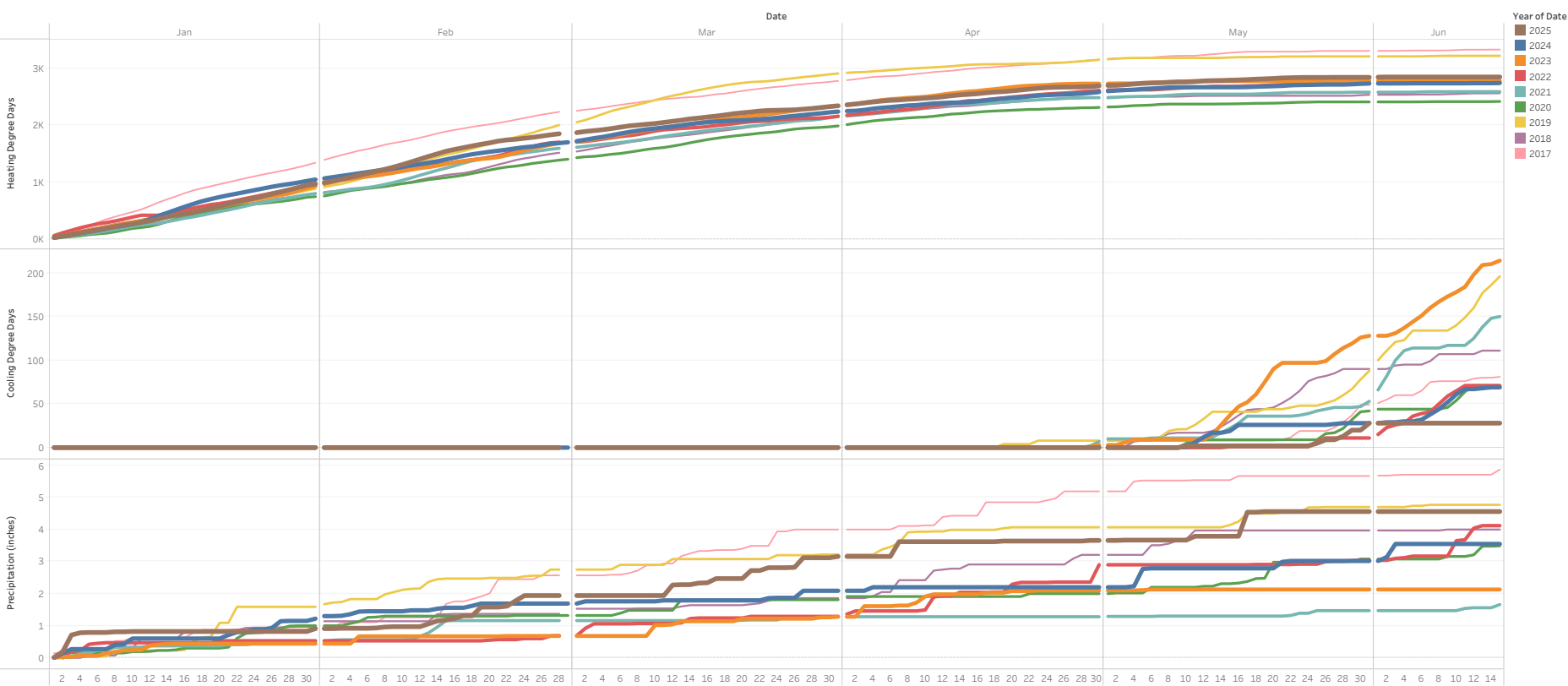
- Budget
- Amended Budget
- Actual
- Cumulative Variance Original
- Cumulative Variance Amended
- Month Over / (Under)
- Heating Degree Days
- Cooling Degree Days

Note: Cumulative budget amendment changes are reflected in the month of September.

Cooling Degree Days (CDD) are a measure of how hot the temperature was on a given day or during a period of days. CDD's quantify the demand for energy needed to cool buildings. The higher the CDD's, the hotter the region is.

Heating Degree Days (HDD) are a measure of how cold the temperature was on a given day or during a period of days. HDD's quantify the demand for energy needed to heat buildings. The higher the HDD's, the colder the region is.

Cumulative Daily Weather by Year



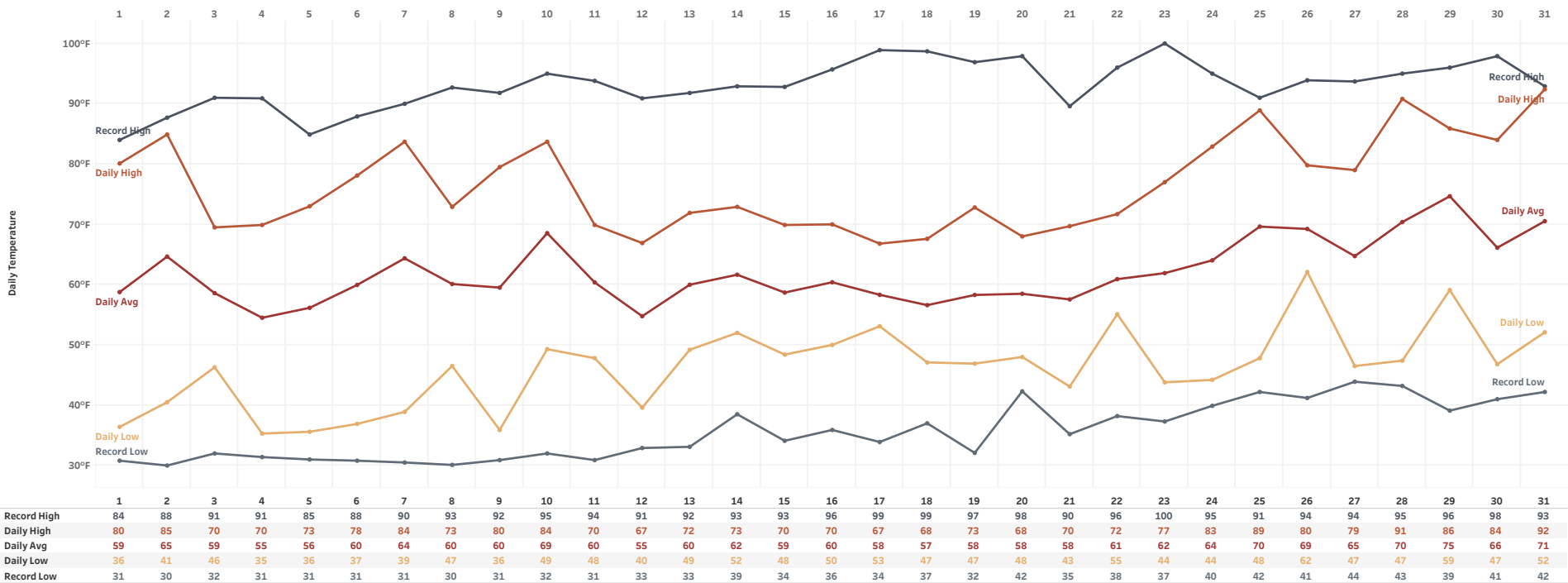
Daily weather at Tri-Cities Airport (USW00024163), sourced from NOAA website, <https://www.ncdc.noaa.gov/cdo-web/search?datasetid=GHCND>

Daily Temperature by Month

Daily temperatures at Tri-Cities Airport (KPSC) with records since January 2000.

Month, Year
May 2025

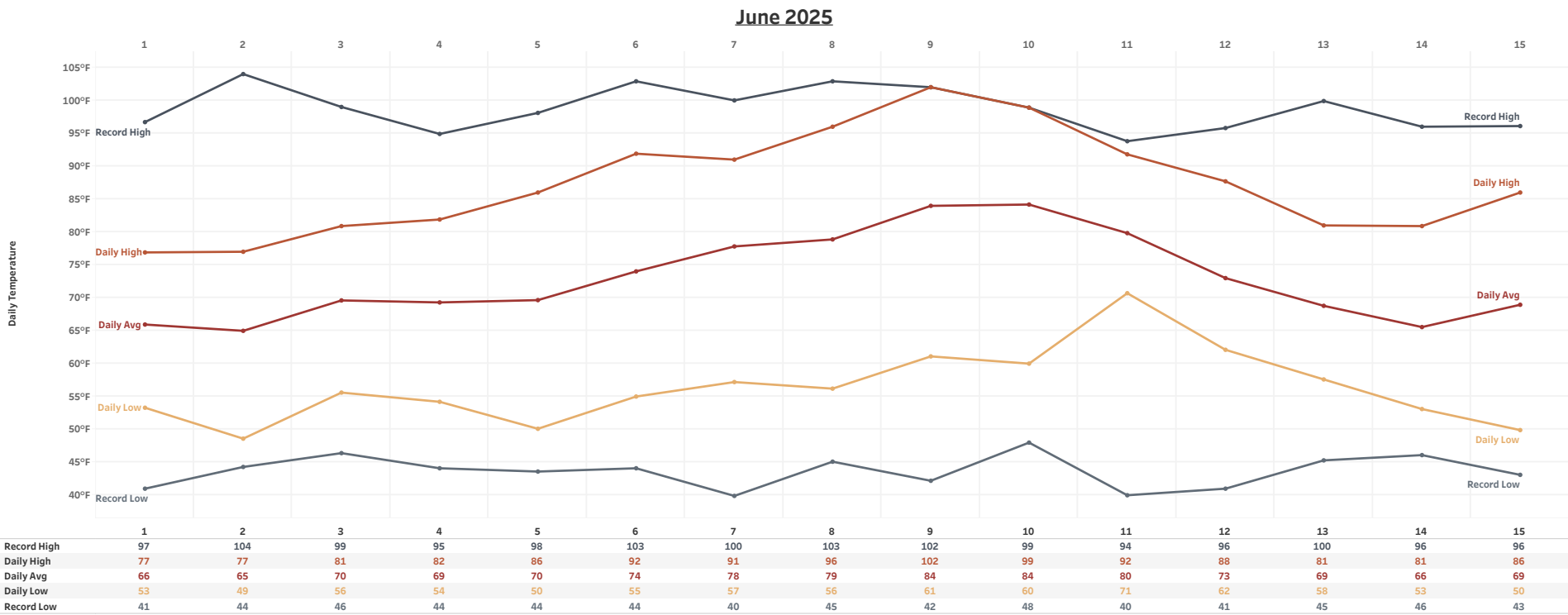
May 2025



Daily Temperature by Month

Daily temperatures at Tri-Cities Airport (KPSC) with records since January 2000.

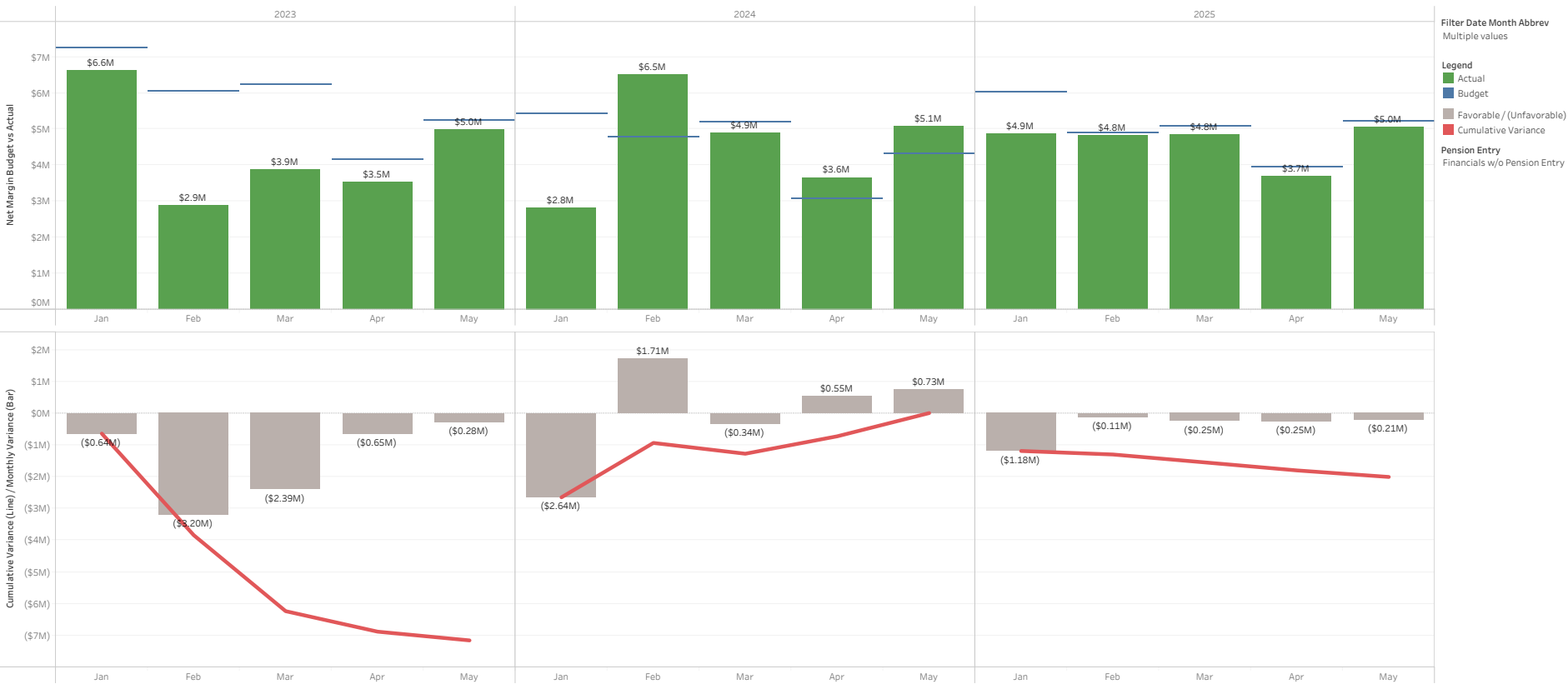
Month, Year
June 2025



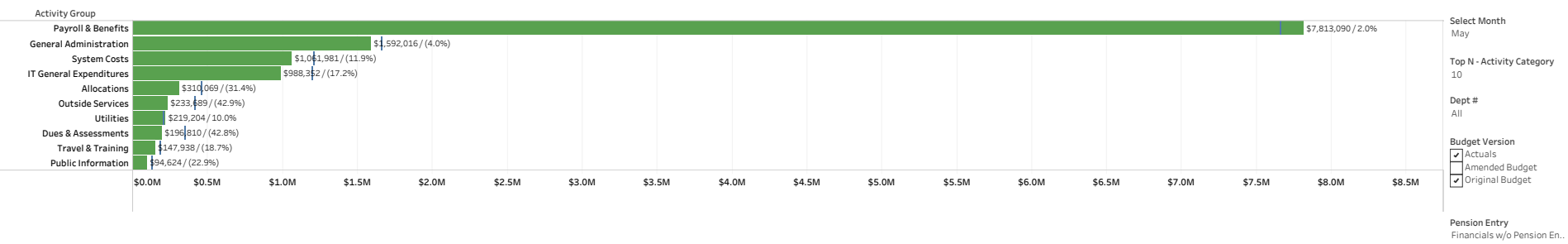
Cumulative Net Power Cost Budget vs Actuals (Original Budget Only): All



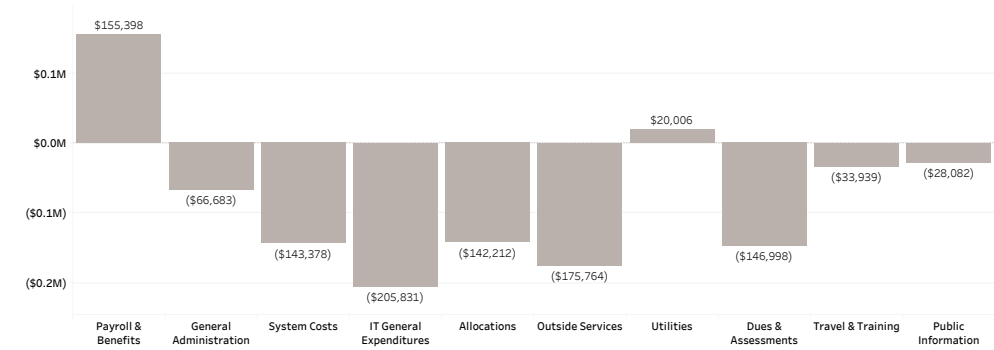
Cumulative Net Margin Original Budget vs Actuals



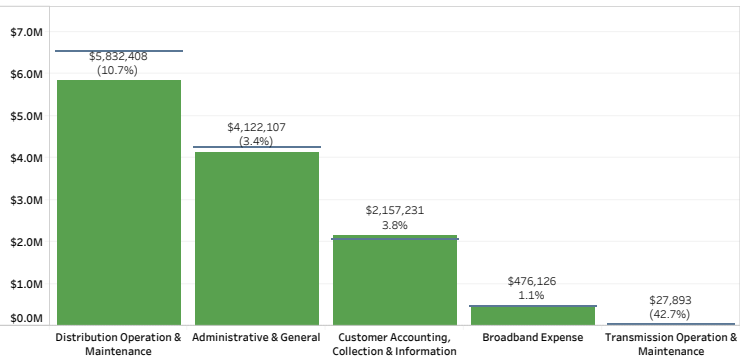
2025 Top 10 YTD O&M Actuals & Original Budget by Activity Group Through May



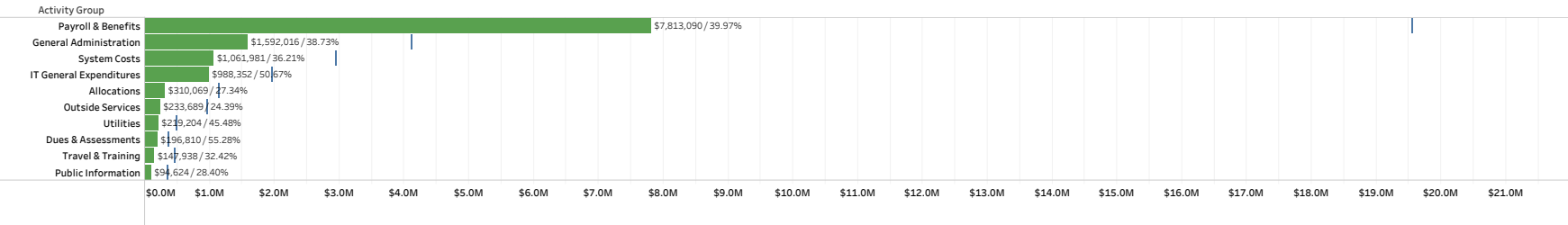
2025 Top 10, YTD O&M Budget Variance by Activity Group Through May



2025 YTD O&M Actuals & Original Budget by Financial Statement Group Through May



2025 Top 10 YTD O&M Actuals & Original Budget by Activity Group Through May



Enter Year
2025

Select Month
May

Top N - Activity Category
10

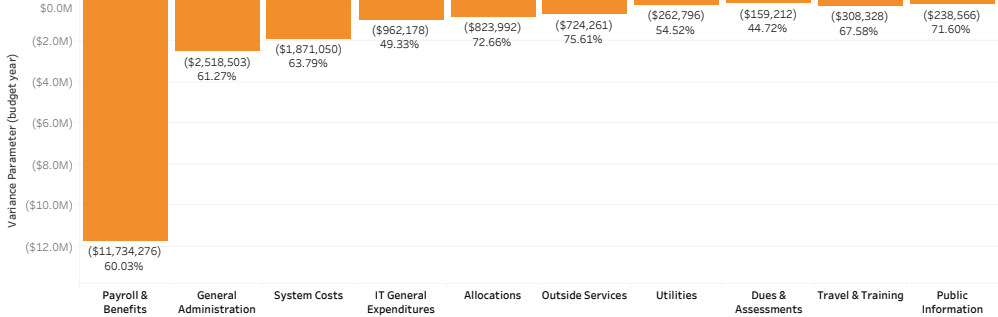
Dept #
All

Budget Version
☒ Actuals
☐ Amended Budget
☒ Original Budget

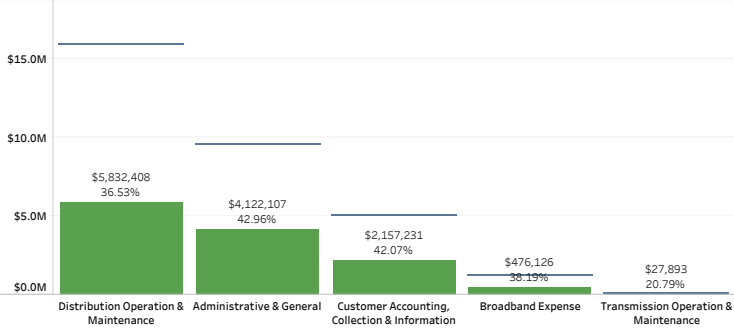
Pension Entry
Financials w/o Pension Ent..

Legend
■ Budget
■ YTD Actuals
■ Remaining Budget

2025 Top 10, Remaining Budget Amount by Activity Group through May



2025 YTD O&M Actuals & Original Budget by Financial Statement Group Through May



Capital Drill Down with 2025 Actuals & Original Budget

% of Year: 41.7%

Category	Group	Actual Amount	Budget Amount	% of Budget
Transmission	Transmission Projects	\$502,491	\$953,314	52.71%
Distribution	Capacity & Reliability	\$3,284,831	\$9,125,242	36.00%
	Customer Growth	\$4,310,771	\$9,331,054	46.20%
	General Plant	\$345,664	\$935,496	36.95%
	Other	\$117,632	\$170,634	68.94%
	Repair & Replace	\$873,124	\$3,718,451	23.48%
Broadband	Broadband	\$250,692	\$1,417,038	17.69%
General Plant	General Plant	\$225,863	\$1,333,792	16.93%
Information Technology	Information Technology	\$760,335	\$3,968,413	19.16%
Other	Other	\$9,294		
Grand Total		\$10,680,696	\$30,953,434	34.51%

Select Year
2025

Select Month(s)

- ☒ Jan
- ☒ Feb
- ☒ Mar
- ☒ Apr
- ☒ May
- ☐ Jun
- ☐ Jul
- ☐ Aug
- ☐ Sep
- ☐ Oct
- ☐ Nov
- ☐ Dec
- ☒ Budget

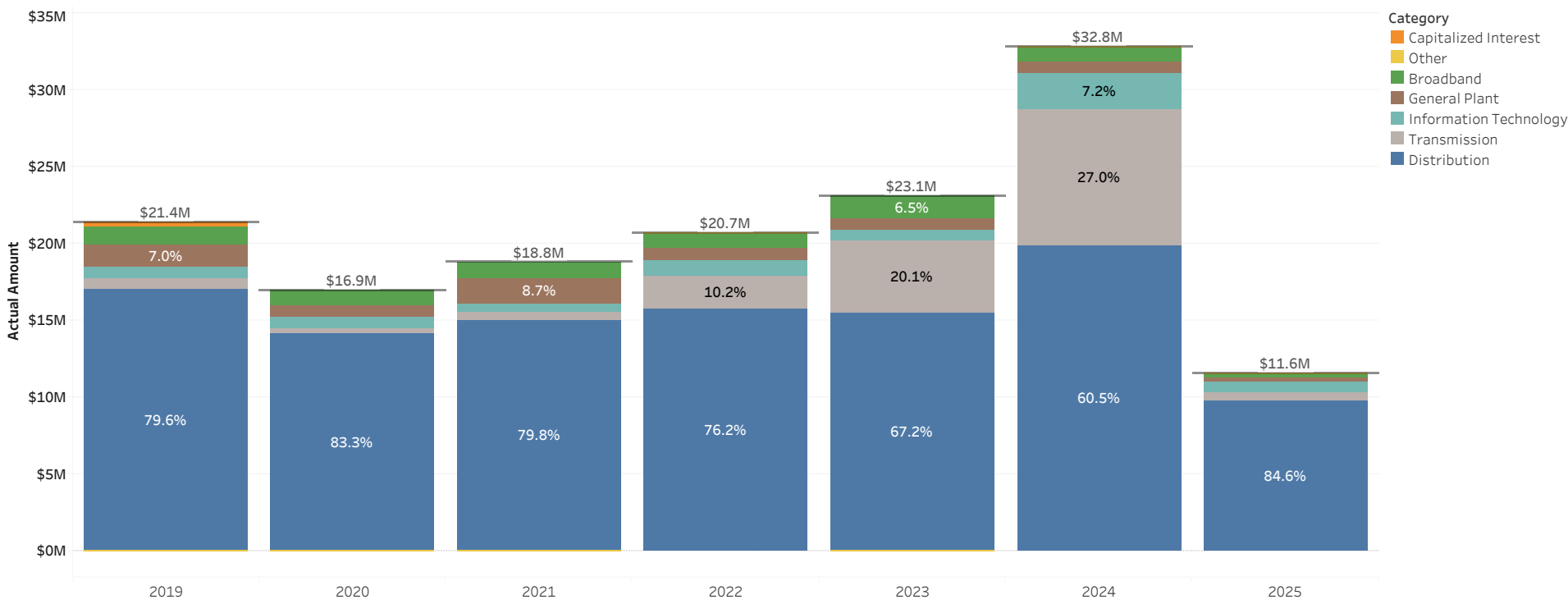
Budget Version

- ☒ Actuals
- ☐ Amended Budget
- ☒ Original Budget

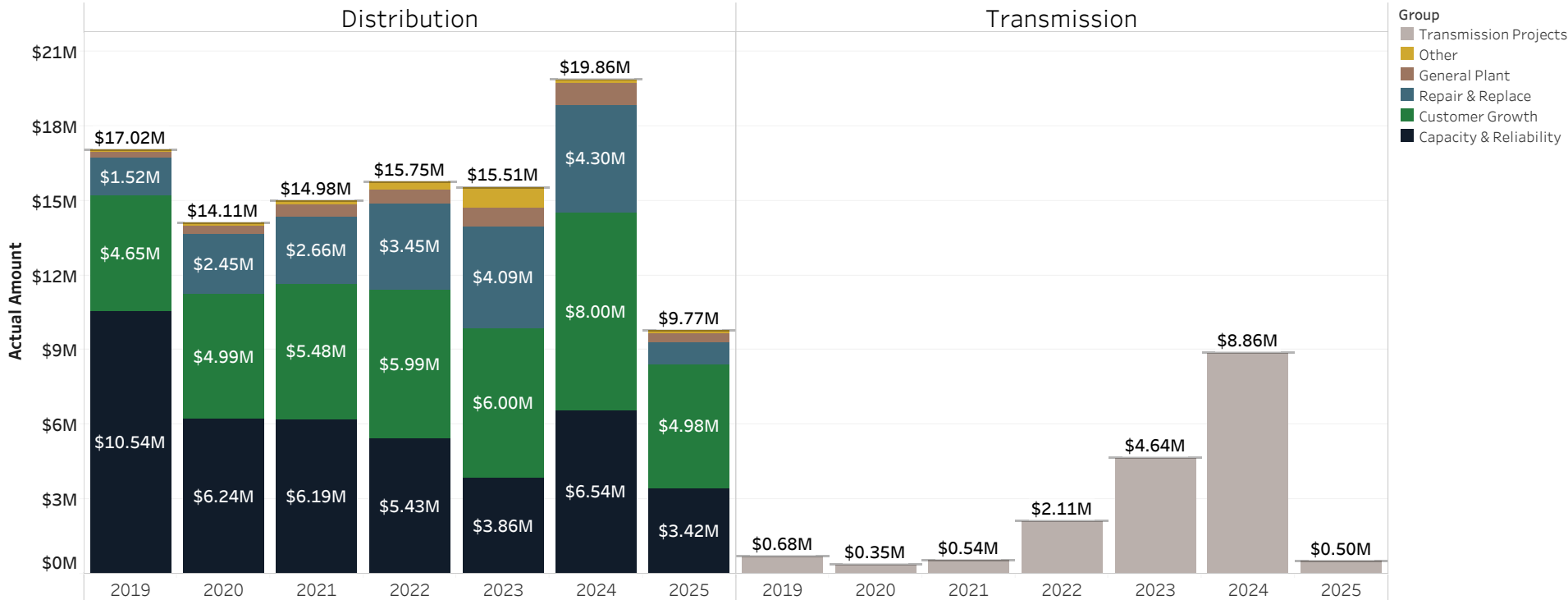
Pension Entry

Financials w/o Pension Entry

Gross Capital Expenditures by Category (Actuals)



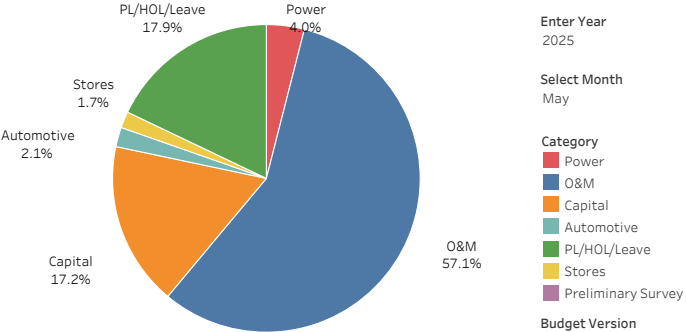
Gross Capital Expenditures by Group (Actuals)



YTD May 2025 Labor by Category: (Activity 11)
Actuals & Original Budget

Category	Current Year Actuals	Current Year Budget	Variance Parameter (year)	Variance % Parameter (Year)	Prior Year Actual (year)	PY Var (year)	PY % Var (year)
Power	\$277,265	\$294,081	(\$16,816)	(5.7%)	\$307,554	(\$30,289)	(9.8%)
O&M	\$4,195,083	\$4,242,702	(\$47,619)	(1.1%)	\$4,133,840	\$61,243	1.5%
Capital	\$1,545,306	\$1,279,335	\$265,971	20.8%	\$1,493,902	\$51,404	3.4%
Automotive	\$134,892	\$152,240	(\$17,347)	(11.4%)	\$122,619	\$12,274	10.0%
PL/HOL/Leave	\$975,948	\$1,330,087	(\$354,139)	(26.6%)	\$946,851	\$29,096	3.1%
Stores	\$134,289	\$127,767	\$6,522	5.1%	\$132,181	\$2,108	1.6%
Preliminary Survey			\$0		(\$433)	\$433	(100.0%)
Grand Total	\$7,262,783	\$7,426,212	(\$163,429)	(19.0%)	\$7,136,514	\$126,269	(90.2%)

YTD May 2025 Budget: (Activity 11)



Activity
11

Enter Year
2025

Select Month
May

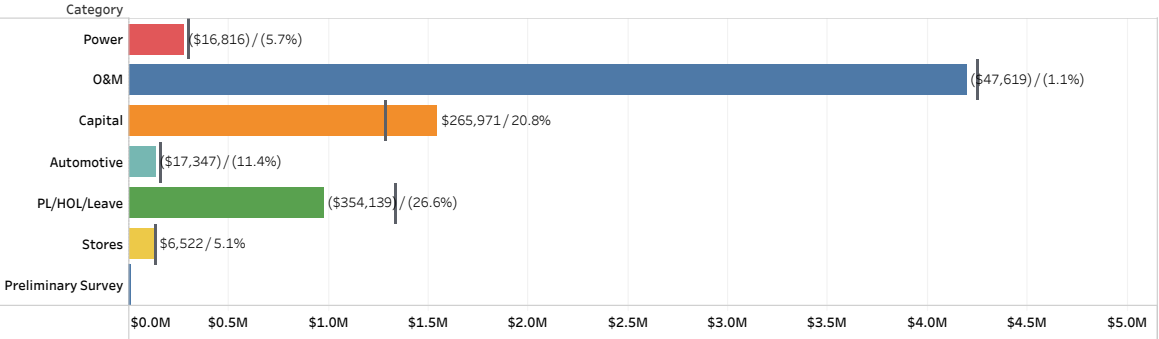
Category

- Power
- O&M
- Capital
- Automotive
- PL/HOL/Leave
- Stores
- Preliminary Survey

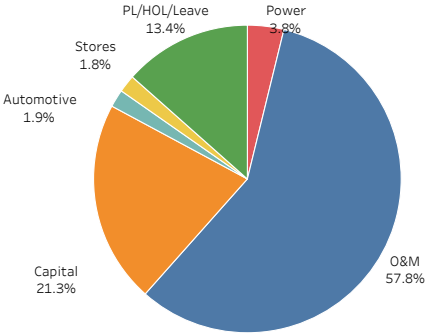
Budget Version

- ☒ Actuals
- ☐ Amended Budget
- ☒ Original Budget

YTD May 2025 Labor by Category: (Activity 11)
(Amount displayed is actuals minus budget / % variance from budget)



YTD May 2025 Actuals: (Activity 11)



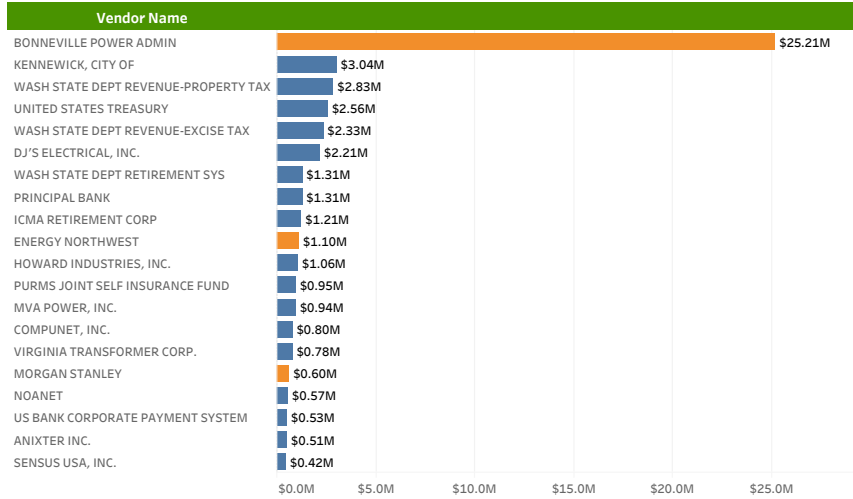
Pension Entry
All

Go to the Monthly View

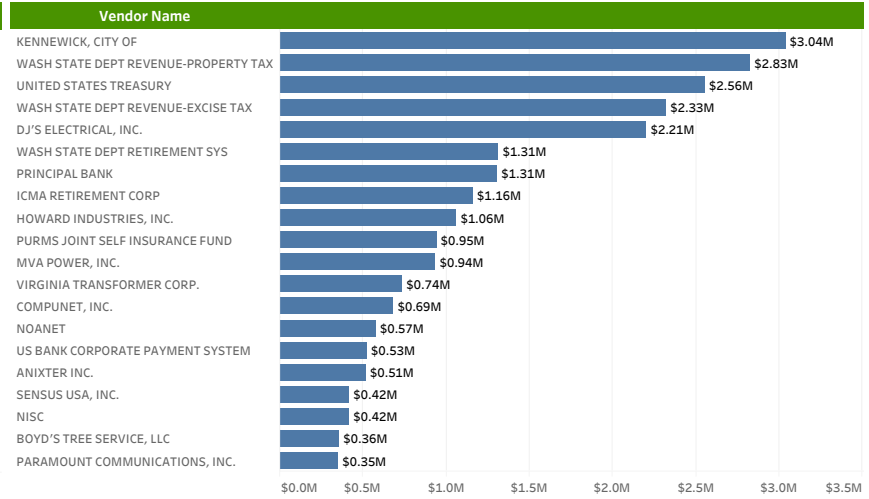
Monthly Multi-Year Graphs

Cumulative Multi-Year Graphs

District Top 20 Vendors - 2025 YTD (Including Power Transactions)



District Top 20 Vendors - 2025 YTD (Excluding Power Transactions)



Year
2025

Top N Vendor
20

Revenue Class Hourly Demand

By Year for Revenue Class: **All** in Month: **June**

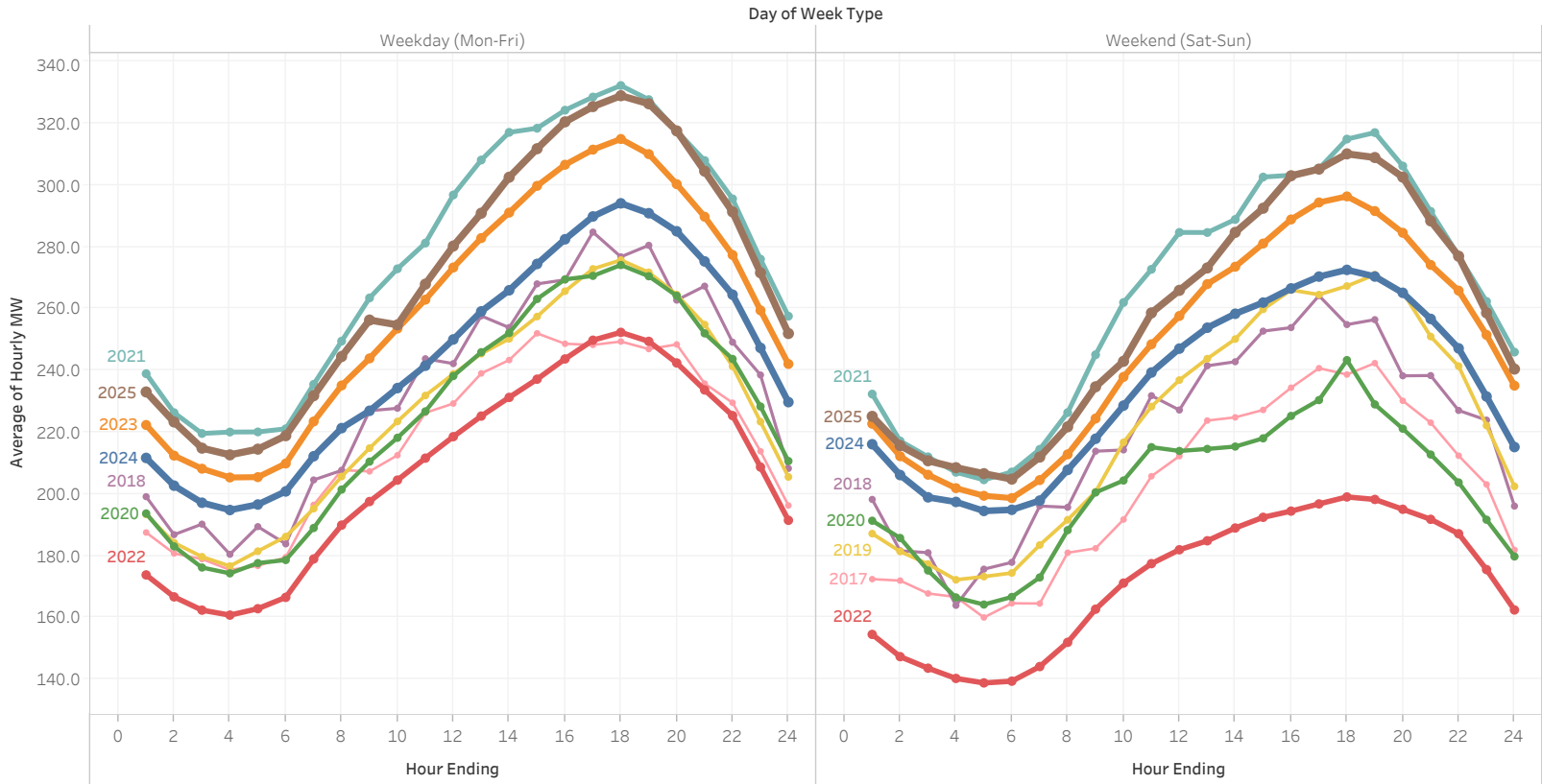
Select filters: Year: All Month: June

Billed Revenue Class
☒ In
☐ Out

- Revenue Class
- ☒ Residential
 - ☒ Small General
 - ☒ Medium General
 - ☒ Large General
 - ☒ Large Industrial
 - ☒ Large Irrigation
 - ☒ Small Irrigation

- Year of Date
- 2025
 - 2024
 - 2023
 - 2018
 - 2020
 - 2021
 - 2019
 - 2018
 - 2017

AMI data updated through:
Sun, June 15, 2025



Revenue Class Hourly Demand

By Year for Revenue Class: **Residential** in Month: **June**

Select filters: Year All Month June

Billed Revenue Class

☒ In
☐ Out

Revenue Class

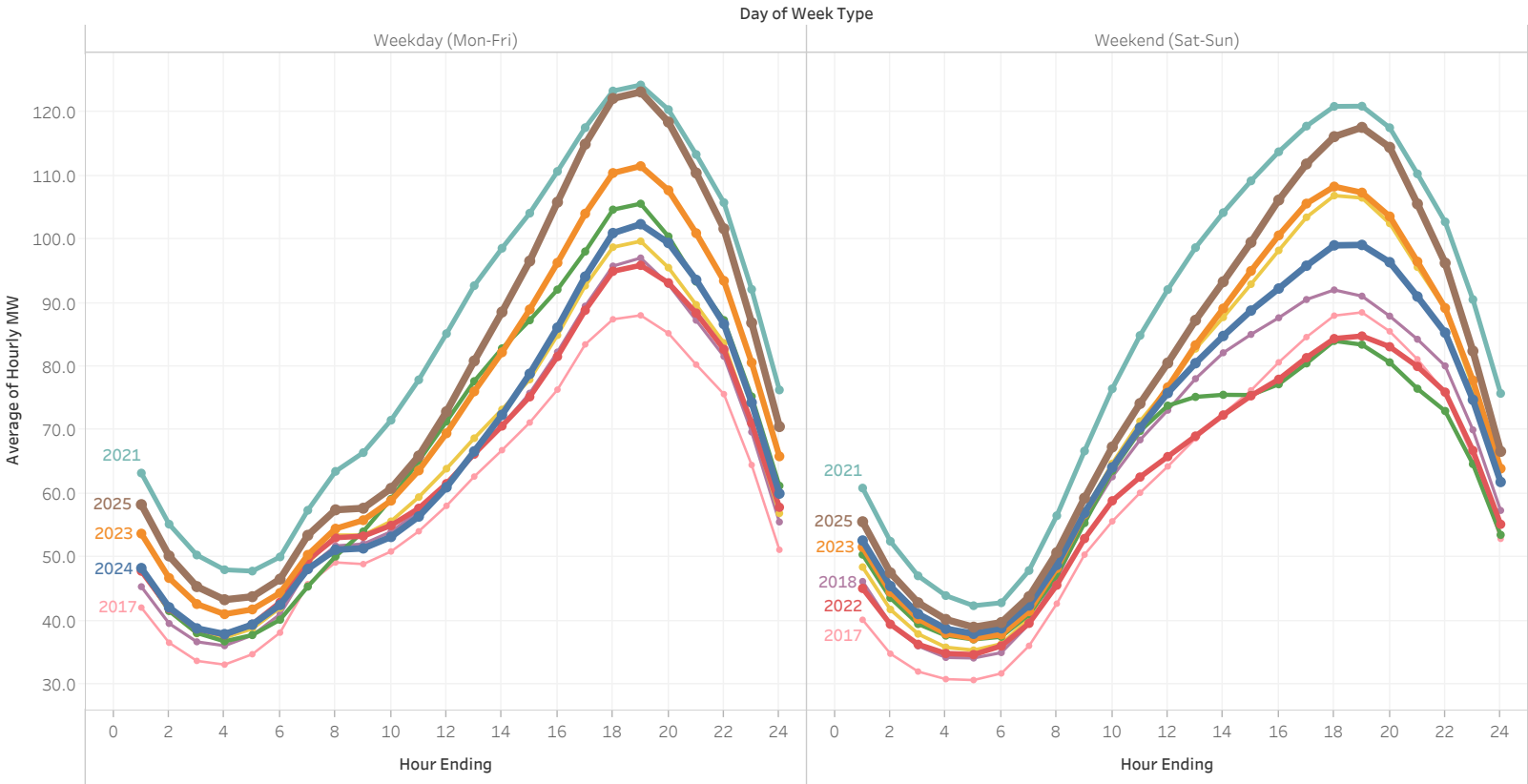
- ☒ Residential
- ☐ Small General
- ☐ Medium General
- ☐ Large General
- ☐ Large Industrial
- ☐ Large Irrigation
- ☐ Small Irrigation

Year of Date

- 2025
- 2024
- 2023
- 2022
- 2021
- 2020
- 2019
- 2018
- 2017

AMI data updated through:

Sun, June 15, 2025



Revenue Class Hourly Demand

By Year for Revenue Class: **Small General, Medium General, Large General** in Month: **June**

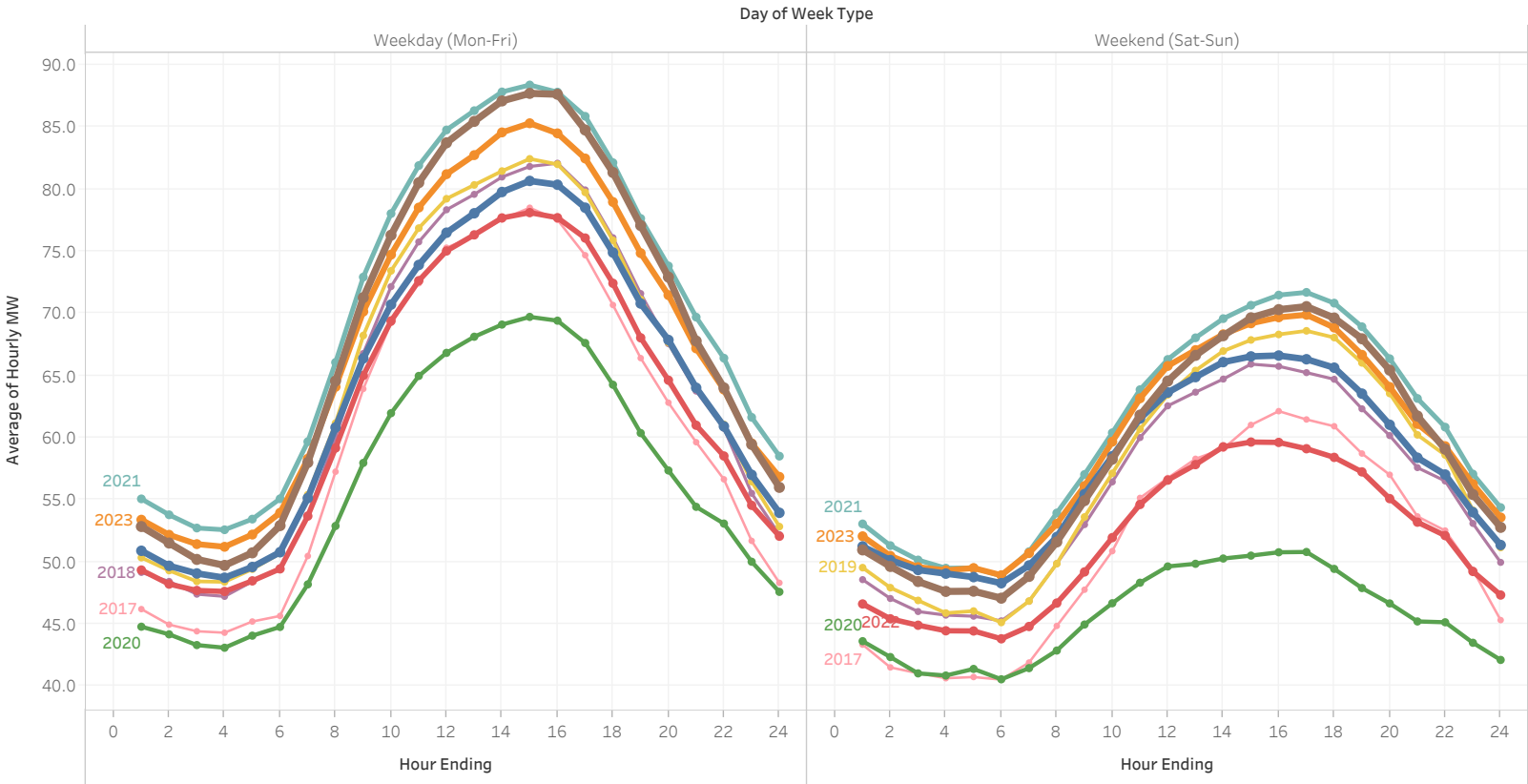
Select filters: Year All Month June

Billed Revenue Class
☒ In
☐ Out

- Revenue Class
- ☐ Residential
 - ☒ Small General
 - ☒ Medium General
 - ☒ Large General
 - ☐ Large Industrial
 - ☐ Large Irrigation
 - ☐ Small Irrigation

- Year of Date
- 2025
 - 2024
 - 2023
 - 2022
 - 2021
 - 2020
 - 2019
 - 2018
 - 2017

AMI data updated through:
Sun, June 15, 2025



Revenue Class Hourly Demand

By Year for Revenue Class: **Large Irrigation** in Month: **June**

Select filters: Year All Month June

Billed Revenue Class

☒ In
☐ Out

Revenue Class

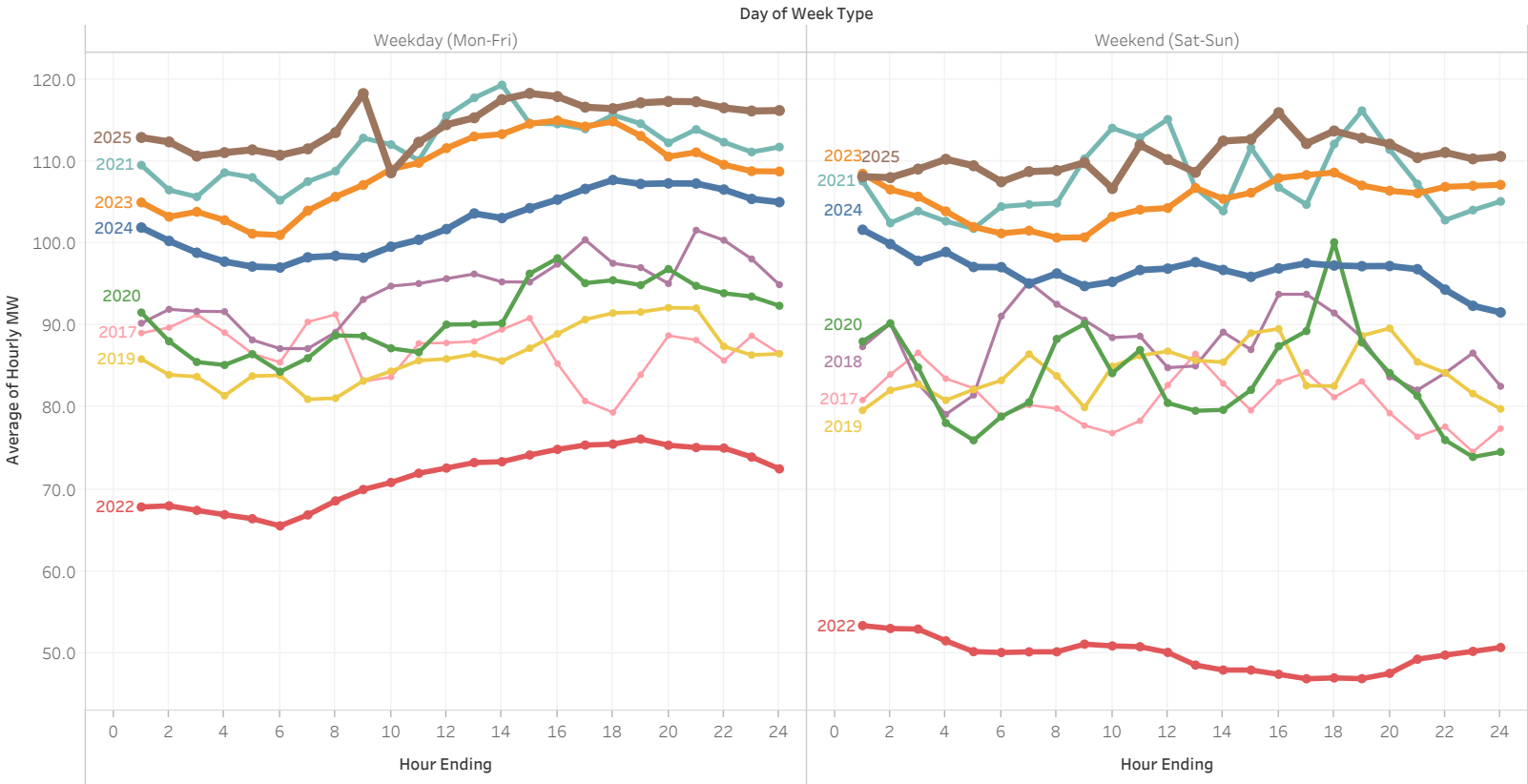
- ☐ Residential
- ☐ Small General
- ☐ Medium General
- ☐ Large General
- ☐ Large Industrial
- ☒ Large Irrigation
- ☐ Small Irrigation

Year of Date

- 2025
- 2024
- 2023
- 2022
- 2021
- 2020
- 2019
- 2018
- 2017

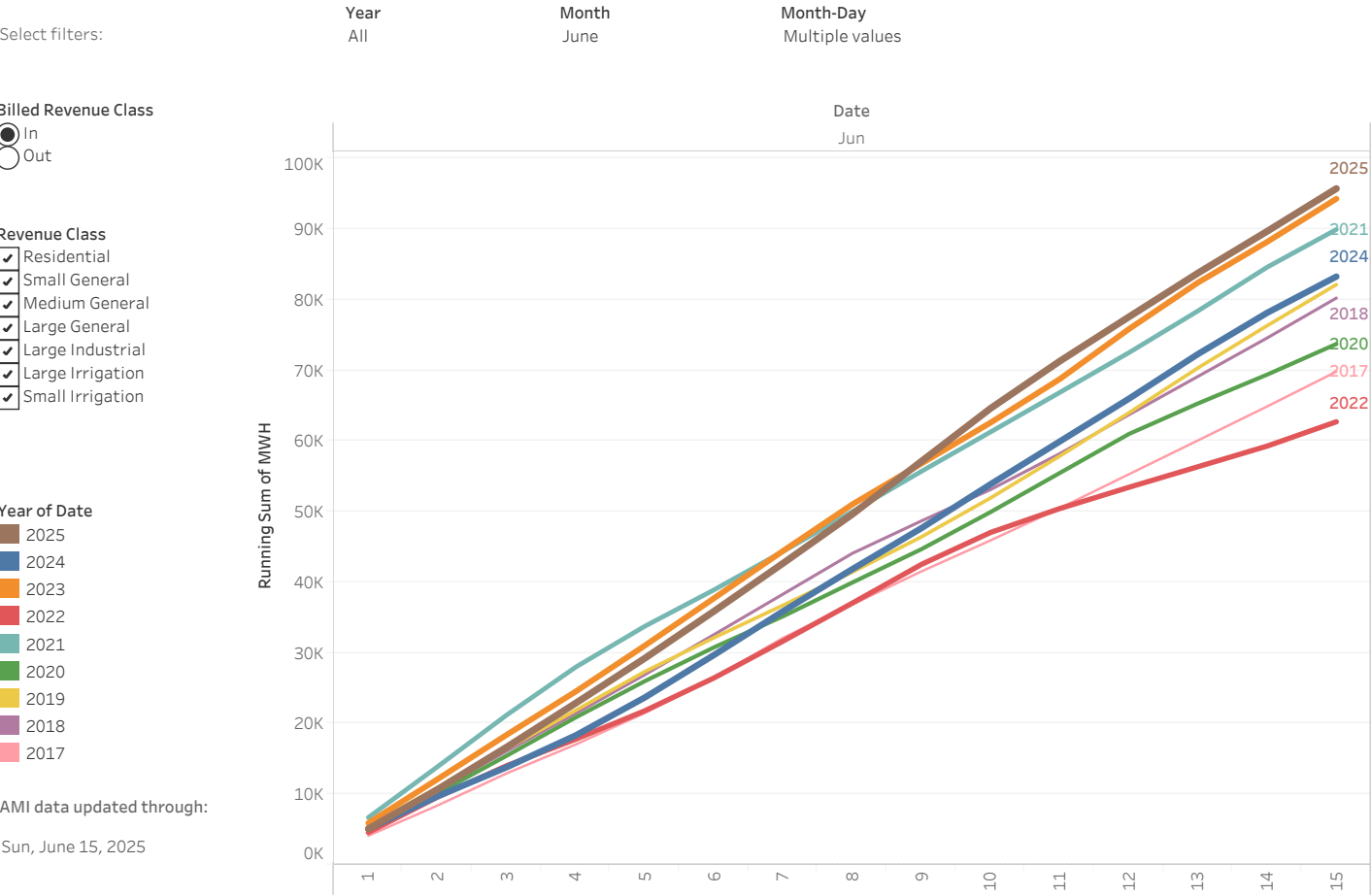
AMI data updated through:

Sun, June 15, 2025



Revenue Class Cumulative Energy

By Year for Revenue Class: **All** in Month: **June**



Year Over Year Summary:
(hover to highlight year)

Year of Date	MWH		%
	MWH	Difference	Difference
2017	69,822		
2018	80,240	10,418	14.92%
2019	82,146	1,906	2.38%
2020	73,733	-8,413	-10.24%
2021	89,941	16,208	21.98%
2022	62,728	-27,213	-30.26%
2023	94,291	31,563	50.32%
2024	83,278	-11,013	-11.68%
2025	95,735	12,456	14.96%

Note:
Totals do not include
non-AMI meter readings.

Revenue Class Cumulative Energy

By Year for Revenue Class: **Residential** in Month: **June**

Select filters: Year: All Month: June Month-Day: Multiple values

Billed Revenue Class

☒ In

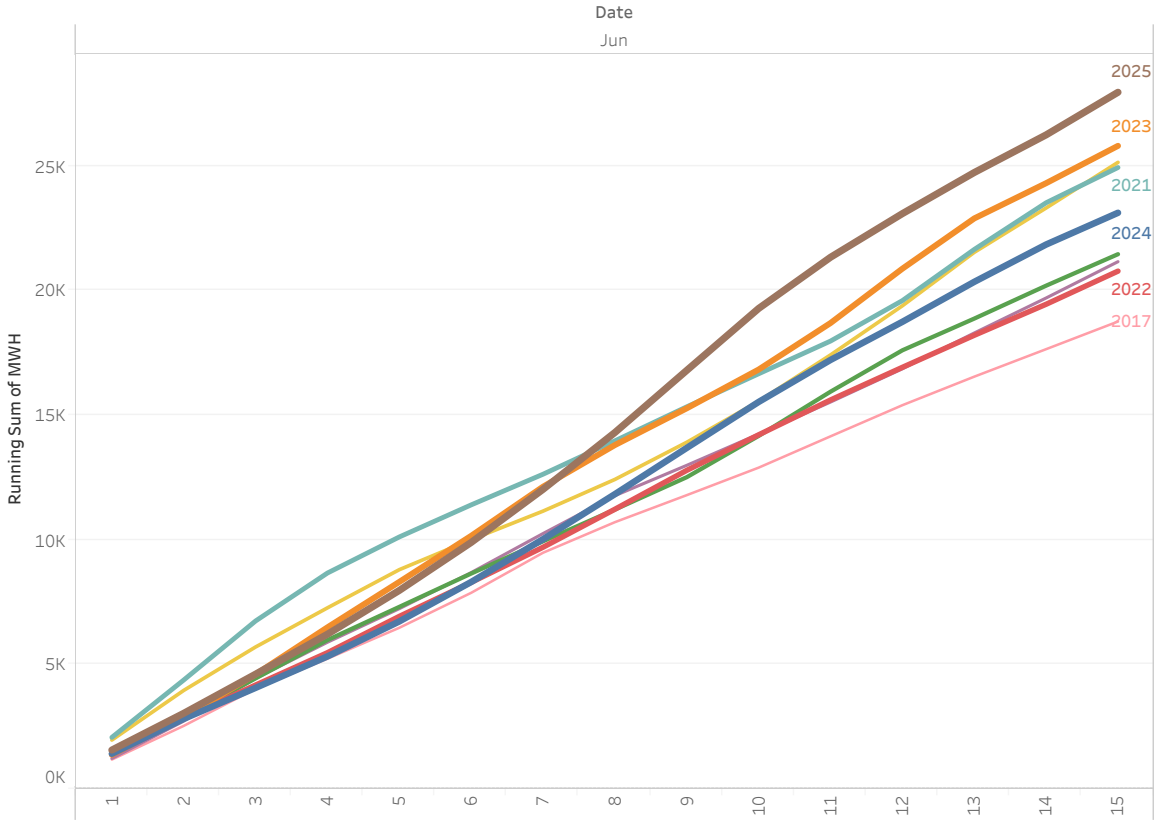
☐ Out

- Revenue Class
- ☒ Residential
 - ☐ Small General
 - ☐ Medium General
 - ☐ Large General
 - ☐ Large Industrial
 - ☐ Large Irrigation
 - ☐ Small Irrigation

- Year of Date
- 2025
 - 2024
 - 2023
 - 2022
 - 2021
 - 2020
 - 2019
 - 2018
 - 2017

AMI data updated through:

Sun, June 15, 2025



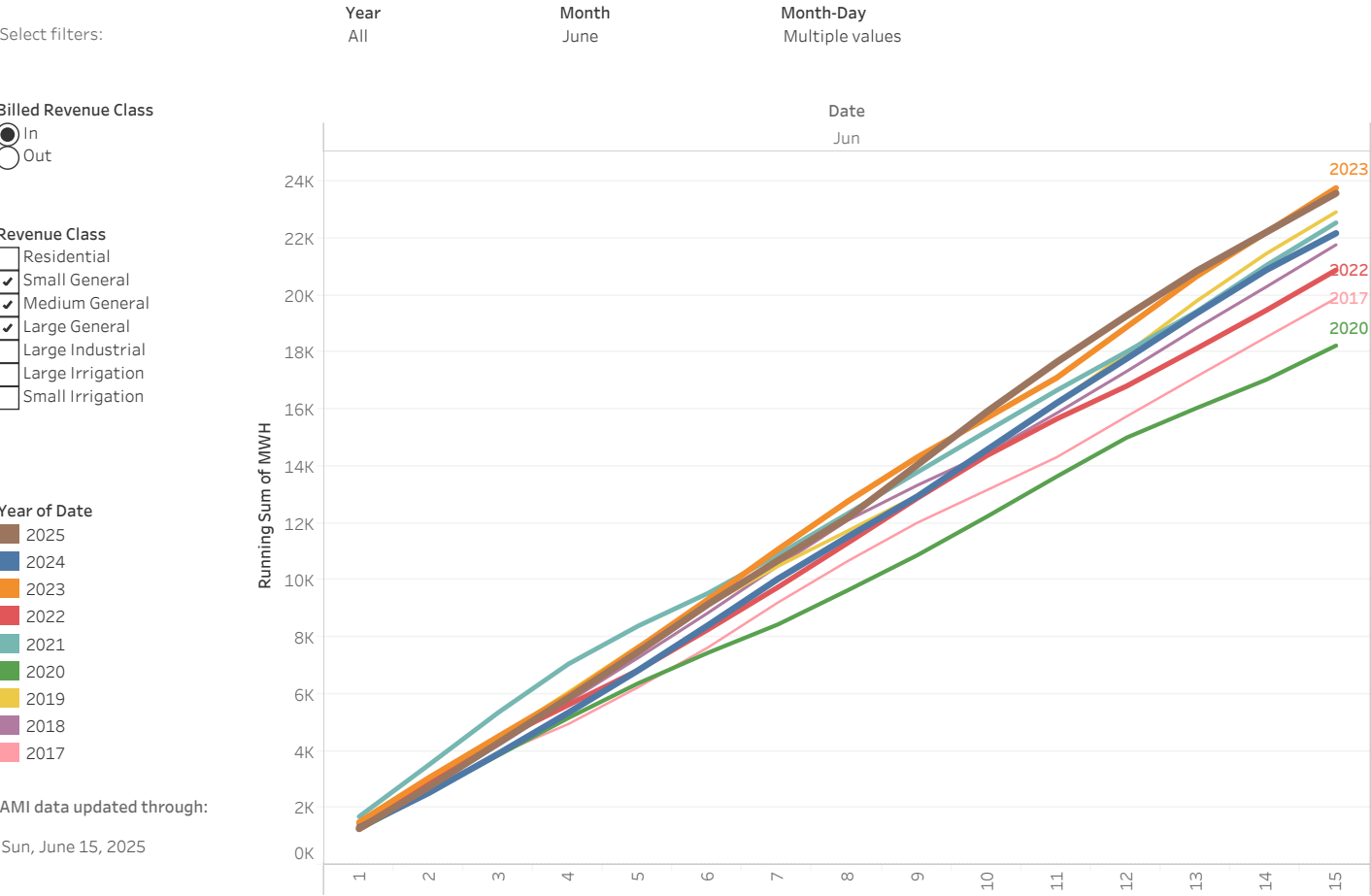
Year Over Year Summary:
(hover to highlight year)

Year of Date	MWH		%	
	MWH	Difference	Difference	
2017	18,757			
2018	21,158	2,402	12.81%	
2019	25,144	3,985	18.84%	
2020	21,459	-3,685	-14.66%	
2021	24,936	3,478	16.21%	
2022	20,779	-4,157	-16.67%	
2023	25,806	5,027	24.19%	
2024	23,120	-2,686	-10.41%	
2025	27,956	4,836	20.92%	

Note:
Totals do not include
non-AMI meter readings.

Revenue Class Cumulative Energy

By Year for Revenue Class: **Small General, Medium General, Large General** in Month: **June**



Year Over Year Summary:
(hover to highlight year)

Year of Date	MWH	MWH Difference	% Difference
2017	19,897		
2018	21,773	1,876	9.43%
2019	22,923	1,149	5.28%
2020	18,233	-4,689	-20.46%
2021	22,547	4,314	23.66%
2022	20,884	-1,664	-7.38%
2023	23,765	2,882	13.80%
2024	22,179	-1,586	-6.67%
2025	23,582	1,403	6.33%

Note:
Totals do not include
non-AMI meter readings.

Revenue Class Cumulative Energy

By Year for Revenue Class: **Large Irrigation** in Month: **June**

Select filters: Year: All Month: June Month-Day: Multiple values

Billed Revenue Class

☒ In

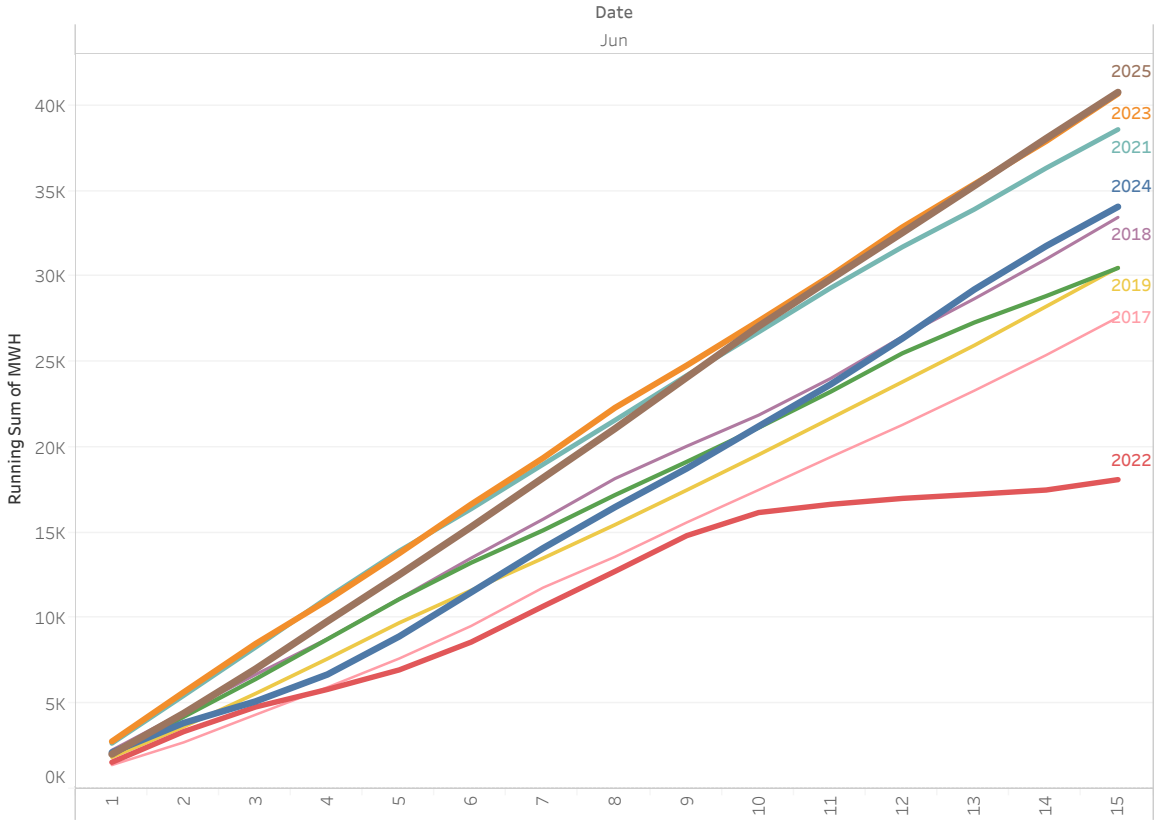
☐ Out

- Revenue Class
- ☐ Residential
 - ☐ Small General
 - ☐ Medium General
 - ☐ Large General
 - ☐ Large Industrial
 - ☒ Large Irrigation
 - ☐ Small Irrigation

- Year of Date
- 2025
 - 2024
 - 2023
 - 2022
 - 2021
 - 2020
 - 2019
 - 2018
 - 2017

AMI data updated through:

Sun, June 15, 2025



Year Over Year Summary:
(hover to highlight year)

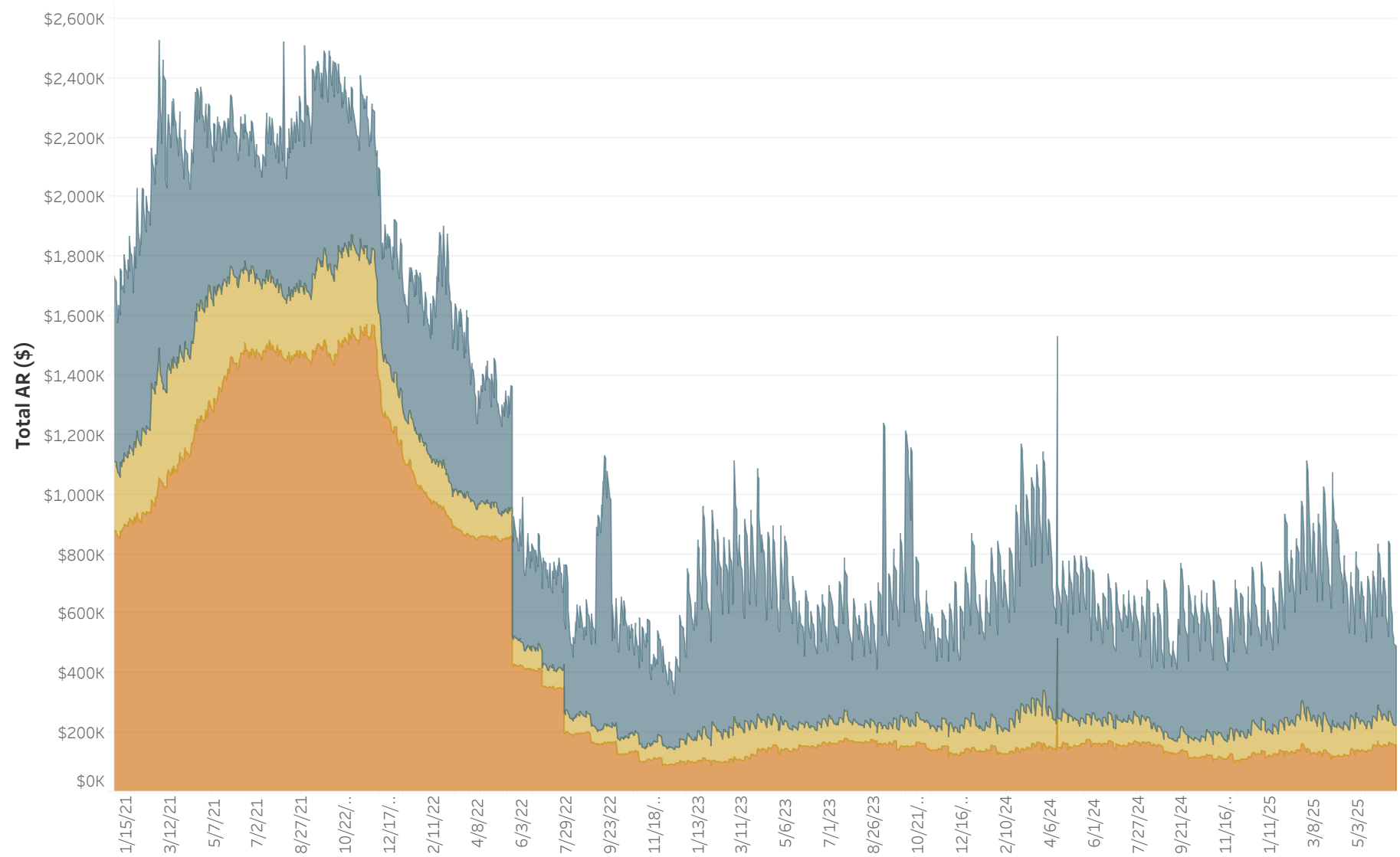
Year of Date	MWH	MWH Difference	% Difference
2017	27,609		
2018	33,458	5,849	21.19%
2019	30,519	-2,939	-8.78%
2020	30,494	-25	-0.08%
2021	38,600	8,106	26.58%
2022	18,106	-20,495	-53.09%
2023	40,698	22,592	124.78%
2024	34,078	-6,620	-16.27%
2025	40,779	6,702	19.67%

Note:
Totals do not include
non-AMI meter readings.

No AMI readings for the
pump decks at Spaw,
Paterson #1 & #2 and Prior
#1 Bay 1 & 2.

Past Due AR in Dollars for Selected Revenue Classes:

All
Balance Aging: 30 Days | 60 Days | 90+ Days



Consumer Class Selection:

Regular

Revenue Class Selection:

All

Service Status:

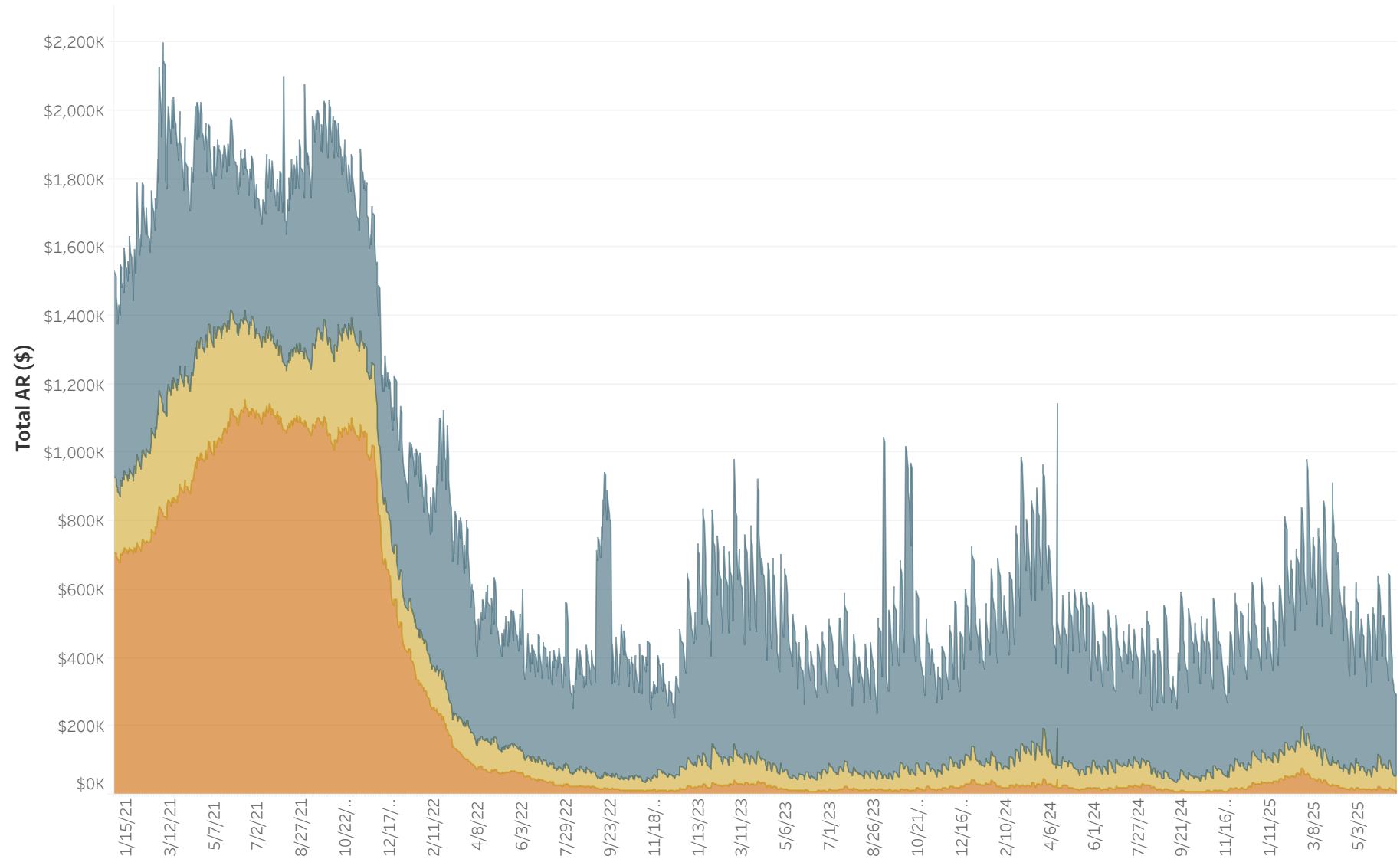
All

	Accounts	Dollars
30 Days	2,692	\$264,847
60 Days	628	\$64,830
90+ Days	736	\$156,633
Past Due	4,056	\$486,310
Total AR	54,252	\$6,672,102

AR data as of 6/22/2025. Data source is AR Balance History Tableau report view.

Past Due AR in Dollars for Selected Revenue Classes:

All
Balance Aging: 30 Days | 60 Days | 90+ Days



Consumer Class Selection:

Regular

Revenue Class Selection:

All

Service Status:

Active

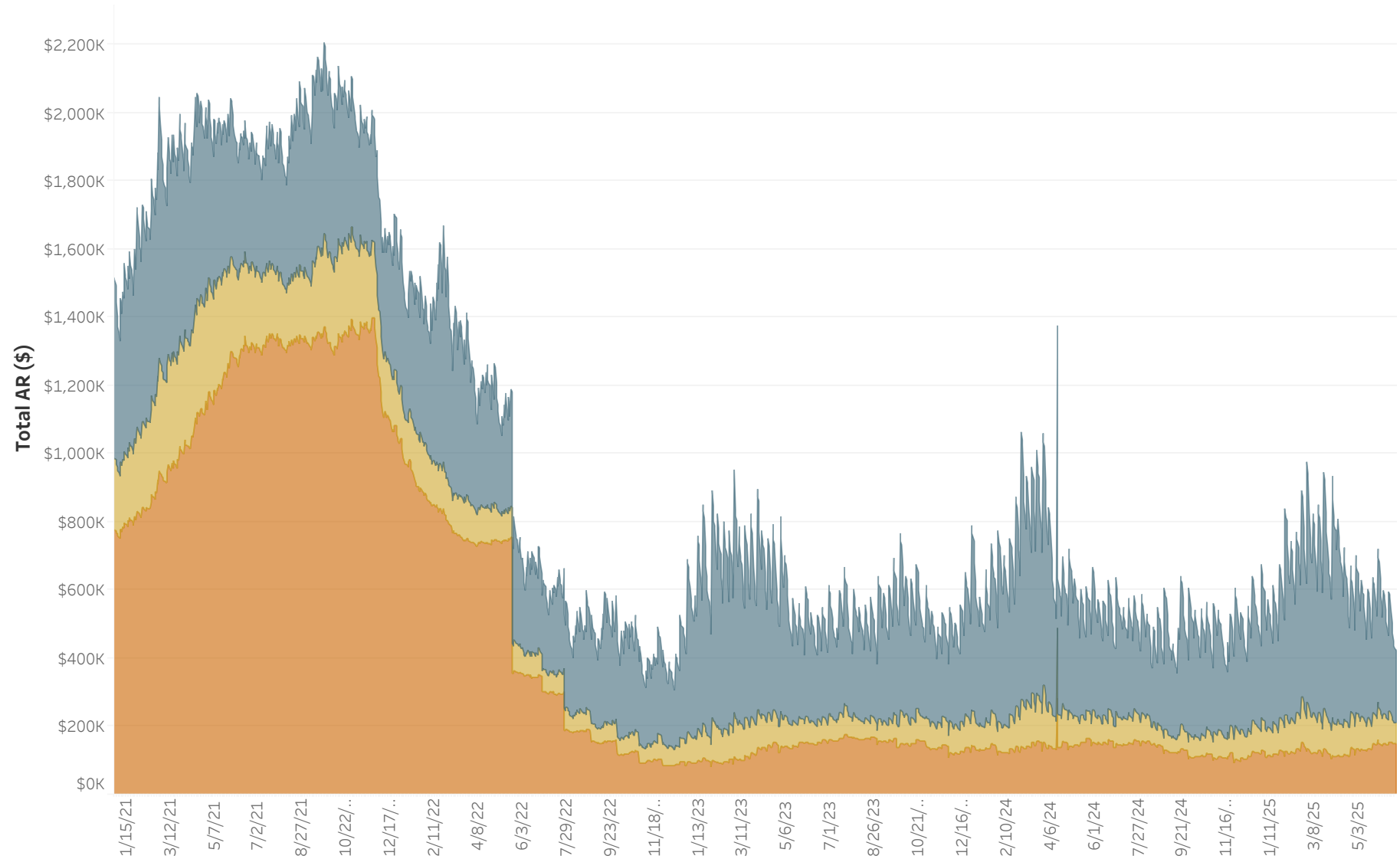
	Accounts	Dollars
30 Days	2,519	\$240,218
60 Days	508	\$39,833
90+ Days	138	\$11,570
Past Due	3,165	\$291,621
Total AR	52,242	\$6,459,025

AR data as of 6/22/2025. Data source is AR Balance History Tableau report view.

Past Due AR in Dollars for Selected Revenue Classes:

Residential

Balance Aging: 30 Days | 60 Days | 90+ Days



Consumer Class Selection:

Regular

Revenue Class Selection:

Residential

Service Status:

All

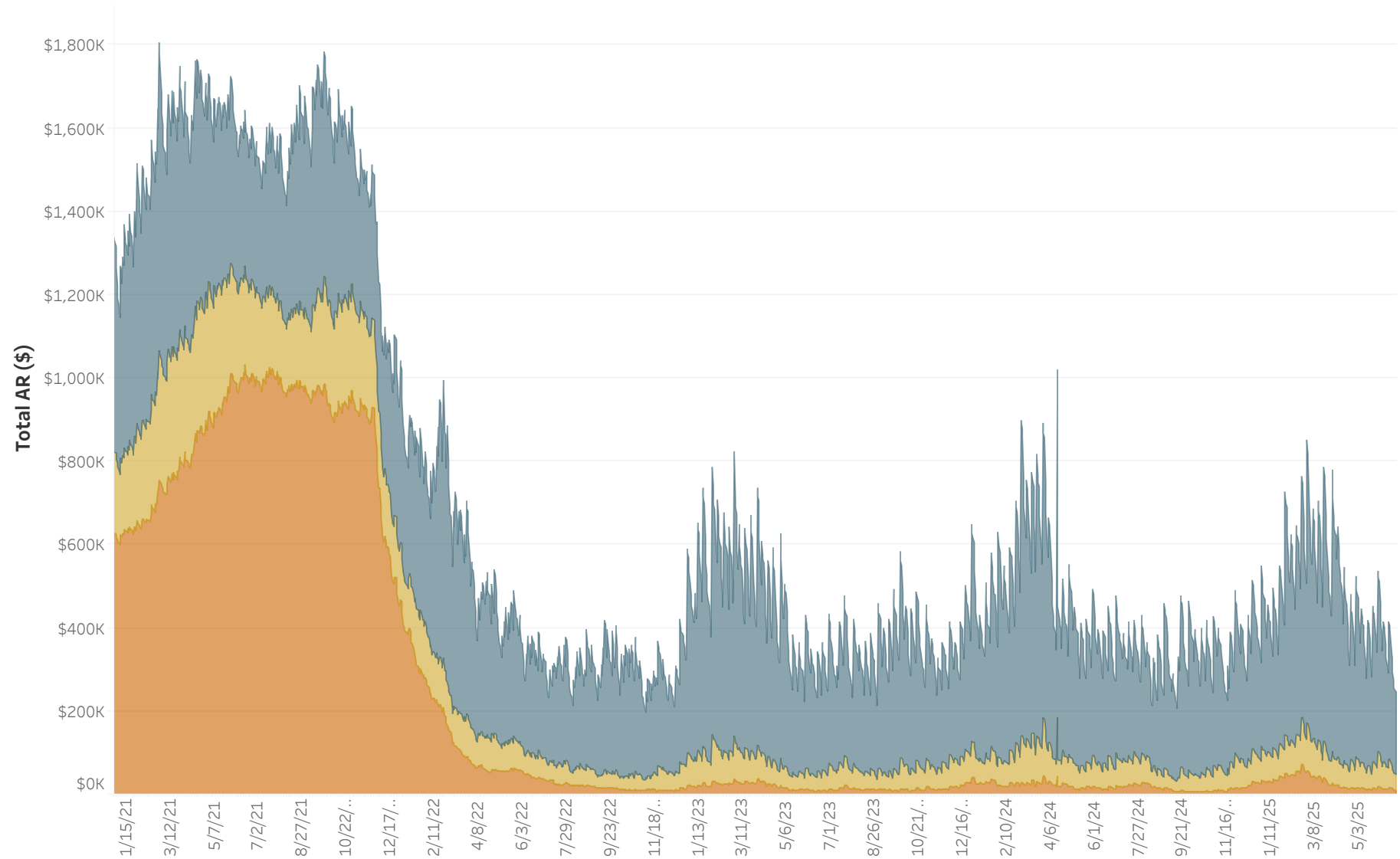
	Accounts	Dollars
30 Days	2,240	\$215,429
60 Days	585	\$60,843
90+ Days	690	\$146,745
Past Due	3,515	\$423,017
Total AR	45,026	\$2,071,154

AR data as of 6/22/2025. Data source is AR Balance History Tableau report view.

Past Due AR in Dollars for Selected Revenue Classes:

Residential

Balance Aging: 30 Days | 60 Days | 90+ Days



Consumer Class Selection:

Regular

Revenue Class Selection:

Residential

Service Status:

Active

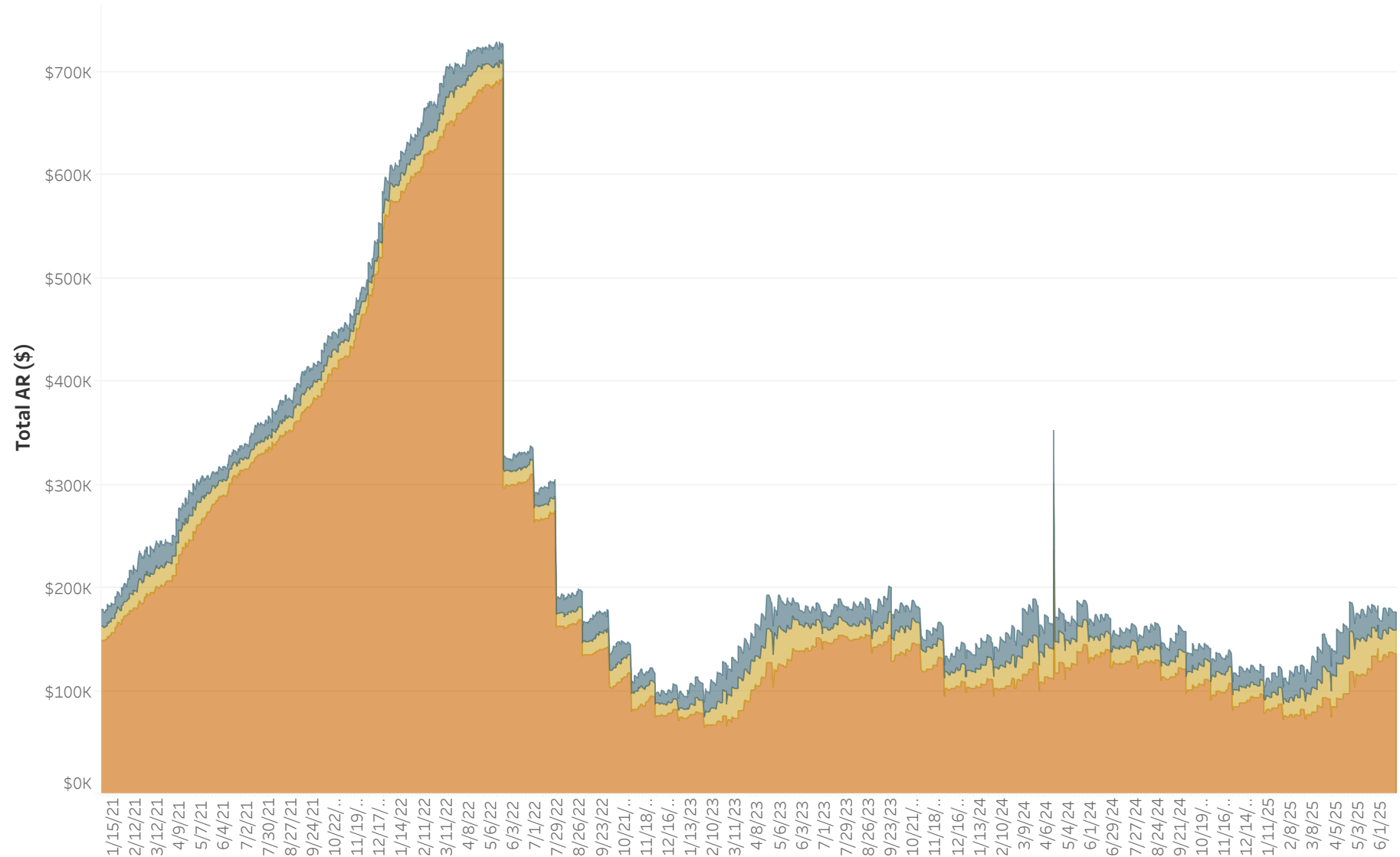
	Accounts	Dollars
30 Days	2,085	\$196,697
60 Days	470	\$38,149
90+ Days	115	\$10,052
Past Due	2,670	\$244,898
Total AR	43,113	\$1,879,597

AR data as of 6/22/2025. Data source is AR Balance History Tableau report view.

Past Due AR in Dollars for Selected Revenue Classes:

Residential

Balance Aging: 30 Days | 60 Days | 90+ Days



Consumer Class Selection:

Regular

Revenue Class Selection:

Residential

Service Status:

Inactive

	Accounts	Dollars
30 Days	139	\$17,155
60 Days	109	\$22,207
90+ Days	571	\$136,487
Past Due	819	\$175,849
Total AR	1,579	\$184,382

AR data as of 6/22/2025. Data source is AR Balance History Tableau report view.